

**NEW CO OIL CONSERVATION COMMISSION
WELL LOCATION AND ACREAGE DEDICATION PLAT**

Form C-102
Supersedes C-128
Effective 1-1-65

All distances must be from the outer boundaries of the Section 3, 9, 9:

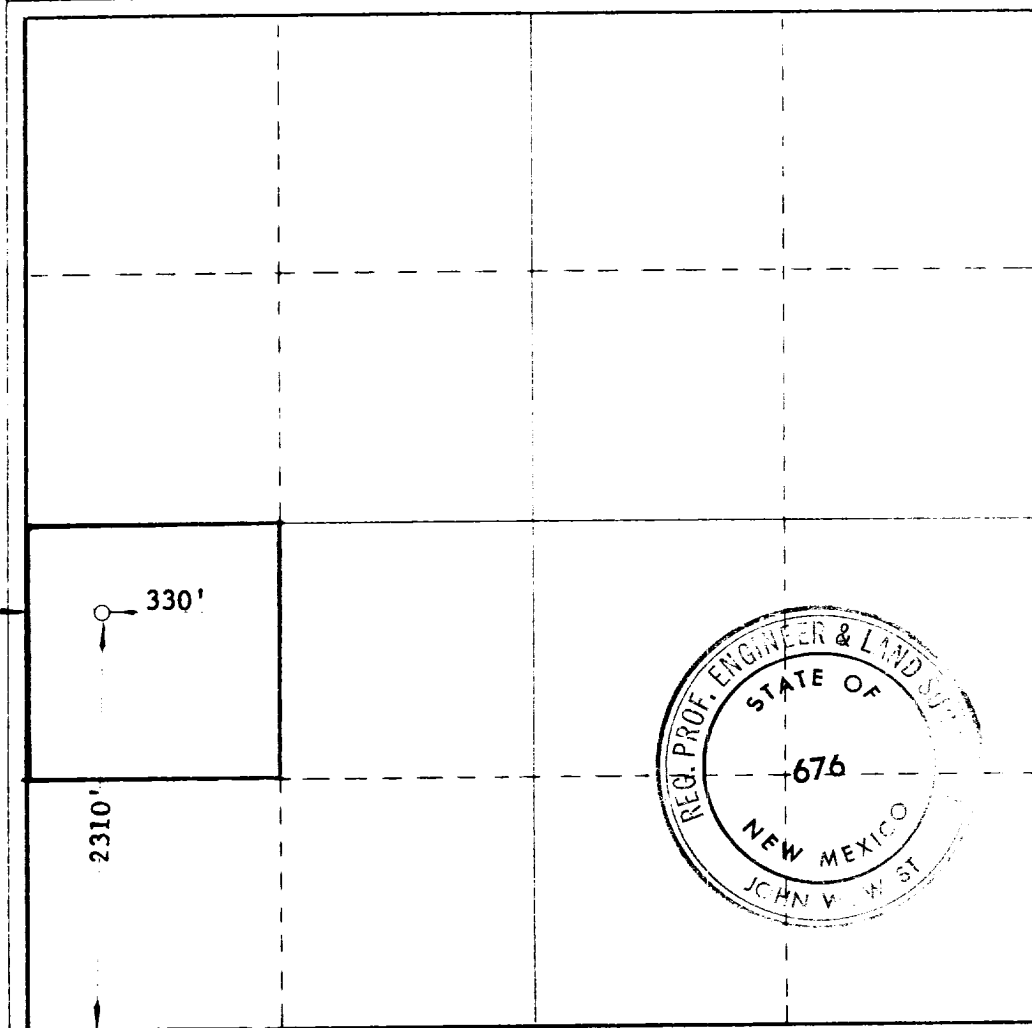
Operator TEXAS PACIFIC OIL CO.			Lease EATON SW		Well No. 9
Tract Letter L	Section 12	Township 25 SOUTH	Range 37 EAST	County LEA	
Actual Plotting Location of Well:					
2310	feet from the	SOUTH	line and	330	feet from the
					WEST
Ground Level Elev. 3140.4	Producing Formation Blinberry - T. Drinkard		Pool Justis	Estimated Acreage 40	

1. Outline the acreage dedicated to the subject well by colored pencil or hatchure marks on the plat below.
2. If more than one lease is dedicated to the well, outline each and identify the ownership thereof (both as to working interest and royalty).
3. If more than one lease of different ownership is dedicated to the well, have the interests of all owners been consolidated by communitization, unitization, force-pooling, etc?

☐ Yes ☐ No If answer is "yes," type of consolidation _____

If answer is "no," list the owners and tract descriptions which have actually been consolidated. (Use reverse side of this form if necessary.) _____

No allowable will be assigned to the well until all interests have been consolidated (by communitization, unitization, forced-pooling, or otherwise) or until a non-standard unit, eliminating such interests, has been approved by the Commission.



CERTIFICATION

I hereby certify that the information contained herein is true and complete to the best of my knowledge and belief.

[Signature]

Area Superintendent

TEXAS PACIFIC OIL COMPANY

5-22-67

I hereby certify that the well location shown on this plat was plotted from field notes of actual surveys made by me or under my supervision, and that the same is true and correct to the best of my knowledge and belief.

Date Surveyed
5/16/67

Registered Professional Engineer
and/or Land Surveyor

[Signature]
John W. West

676

0 330 660 990 1320 1650 1980 2310 2640 2000 1500 1000 500