

NEW MEXICO OIL CONSERVATION COMMISSION
WELL LOCATION AND ACREAGE DEDICATION PLAT
HOBBS OFFICE O. O. O.

Form C-102
Supersedes C-128
Effective 1-1-65

All distances must be from the outer boundaries of the Section.

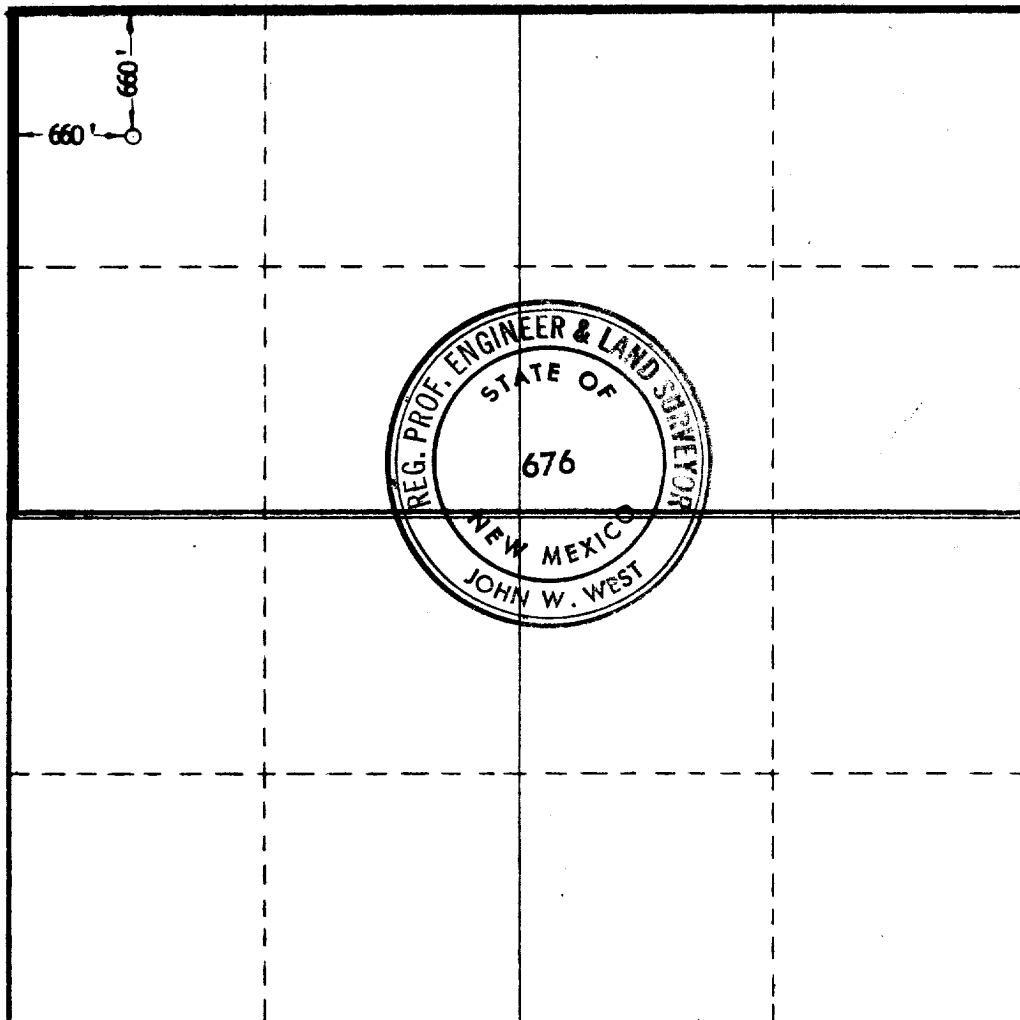
Operator SOUTHLAND ROYALTY CO.		Lease GULF FEDERAL		Well No. 1
Unit Letter D	Section 20	Township 25 SOUTH	Range 35 EAST	County LEA
Actual Footage Location of Well: 660 feet from the NORTH line and 660 feet from the WEST line.				
Ground Level Elev. 3320.8	Producing Formation Wildcat	Pool Wildcat	Dedicated Acreage: 120 40 Acres	

1. Outline the acreage dedicated to the subject well by colored pencil or hatchure marks on the plat below.
2. If more than one lease is dedicated to the well, outline each and identify the ownership thereof (both as to working interest and royalty).
3. If more than one lease of different ownership is dedicated to the well, have the interests of all owners been consolidated by communitization, unitization, force-pooling, etc?

☒ Yes ☐ No If answer is "yes," type of consolidation **Communitization**

If answer is "no," list the owners and tract descriptions which have actually been consolidated. (Use reverse side of this form if necessary.)

No allowable will be assigned to the well until all interests have been consolidated (by communitization, unitization, forced-pooling, or otherwise) or until a non-standard unit, eliminating such interests, has been approved by the Commission.



CERTIFICATION

I hereby certify that the information contained herein is true and complete to the best of my knowledge and belief.

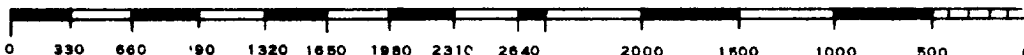
Name **C.H. Can**
Position **District Engineer**
Company **Southland Royalty Co.**
Date **June 8, 1967**

I hereby certify that the well location shown on this plat was plotted from field notes of actual surveys made by me or under my supervision, and that the same is true and correct to the best of my knowledge and belief.

Date Surveyed
5/16/67

Registered Professional Engineer and/or Land Surveyor

John W. West
Certificate No. **676**



1001 1000

ROBERT NEW YORK
NEW YORK NEW YORK

1-1

173