

NO. OF COPIES RECEIVED	
DISTRIBUTION	
SANTA FE	
FILE	
U.S.G.S.	
LAND OFFICE	
OPERATOR	

NEW MEXICO OIL CONSERVATION COMMISSION

Orig & 4cc: **MBCC**
 cc: **G. E. Hansen '66**
 cc: **R. E. Coo**
 cc: **File**

Form C-101
 Revised 1-1-65

5A. Indicate Type of Lease
STATE <input type="checkbox"/> FEE <input type="checkbox"/>
5. State Oil & Gas Lease No.

APPLICATION FOR PERMIT TO DRILL, DEEPEN, OR PLUG BACK

1a. Type of Work		7. Unit Agreement Name	
b. Type of Well OIL WELL <input type="checkbox"/> GAS WELL <input type="checkbox"/> OTHER <input checked="" type="checkbox"/> Water Injection DRILL <input checked="" type="checkbox"/> DEEPEN <input type="checkbox"/> PLUG BACK <input type="checkbox"/> SINGLE ZONE <input checked="" type="checkbox"/> MULTIPLE ZONE <input type="checkbox"/>		Justin McKee Unit	
2. Name of Operator		8. Farm or Lease Name	
UNITY OIL COMPANY			
3. Address of Operator		9. Well No.	
P. O. BOX 249, BURNS, NEW MEXICO 88400		128	
4. Location of Well UNIT LETTER F LOCATED 1820 FEET FROM THE North LINE AND 1820 FEET FROM THE West LINE OF SEC. 34 TWP. 25S RGE. 37E NMPM		10. Field and Pool, or Wildcat UNDESIGNATED Justin McKee	
21. Elevations (Show whether DF, RT, etc.)		12. County	
3078		Lin	
21A. Kind & Status Plug. Bond		19. Proposed Depth	
Blanket Bond 11-30-67		7900	
21B. Drilling Contractor		19A. Formation	
Contract Not let		Justin McKee	
22. Approx. Date Work will start		20. Rotary or C.T.	
When Permit Approved		Rotary	
23. v/da. Paul Indemnity			

SIZE OF HOLE	SIZE OF CASING	WEIGHT PER FOOT	SETTING DEPTH	SACKS OF CEMENT	EST. TOP
17-1/4"	13-3/8"	184	925	520 sacks	Surface
11"	8-5/8"	304	3350	*1017 Sacks	Surface
7-7/8"	5-1/2"	15.54 & 174	7900	* 770 sacks	3300'
* Actual cement volumes to be determined by fluid survey					

It is proposed to drill 17-1/4" hole using sand mud and set 13-3/8" casing at 925' by circulating cement to surface. Then drill 11" hole to 3350' using brine water and set 8-5/8" casing with cement circulated to surface in two stages utilizing HV tool at 900'. Then drill 7-7/8" hole to 5500' using fresh water and then to TB of 7900' with fresh water mud. Set 5-1/2" casing with cement brought to approximately 3300'. Will run Acoustic Gamma Ray and Gamma Log Surveys. Will perforate McKee interval from approximately 7710' to 7837', treat with acid and equip with plastic coated tubing and tension packer for water injection service.

Drilling of this injection well was covered by MBCC Orders No. R-2965 and No. R-2966 dated September 13, 1965.

IN ABOVE SPACE DESCRIBE PROPOSED PROGRAM: IF PROPOSAL IS TO DEEPEN OR PLUG BACK, GIVE DATA ON PRESENT PRODUCTIVE ZONE AND PROPOSED NEW PRODUCTIVE ZONE. GIVE BLOWOUT PREVENTER PROGRAM, IF ANY.

I hereby certify that the information above is true and complete to the best of my knowledge and belief.

ORIGINAL SIGNED BY
 Signed HAROLD G. VEST Title Area Engineer Date September 3, 1968

(This space for State Use)

APPROVED BY Leslie A. Clement APPROVAL VALID DATE 12/5/68
 CONDITIONS OF APPROVAL, IF ANY: FOR 90 DAYS UNLESS
RE-APPROVAL COMMENCED.

12/5/68 133/8"

**NEW MEXICO OIL CONSERVATION COMMISSION
WELL LOCATION AND ACREAGE DEDICATION PLAT**

Form C-102
Supersedes C-128
Effective 1-1-65

HOBBS OFFICE, O. C. C.
All distances must be from the outer boundaries of the Section

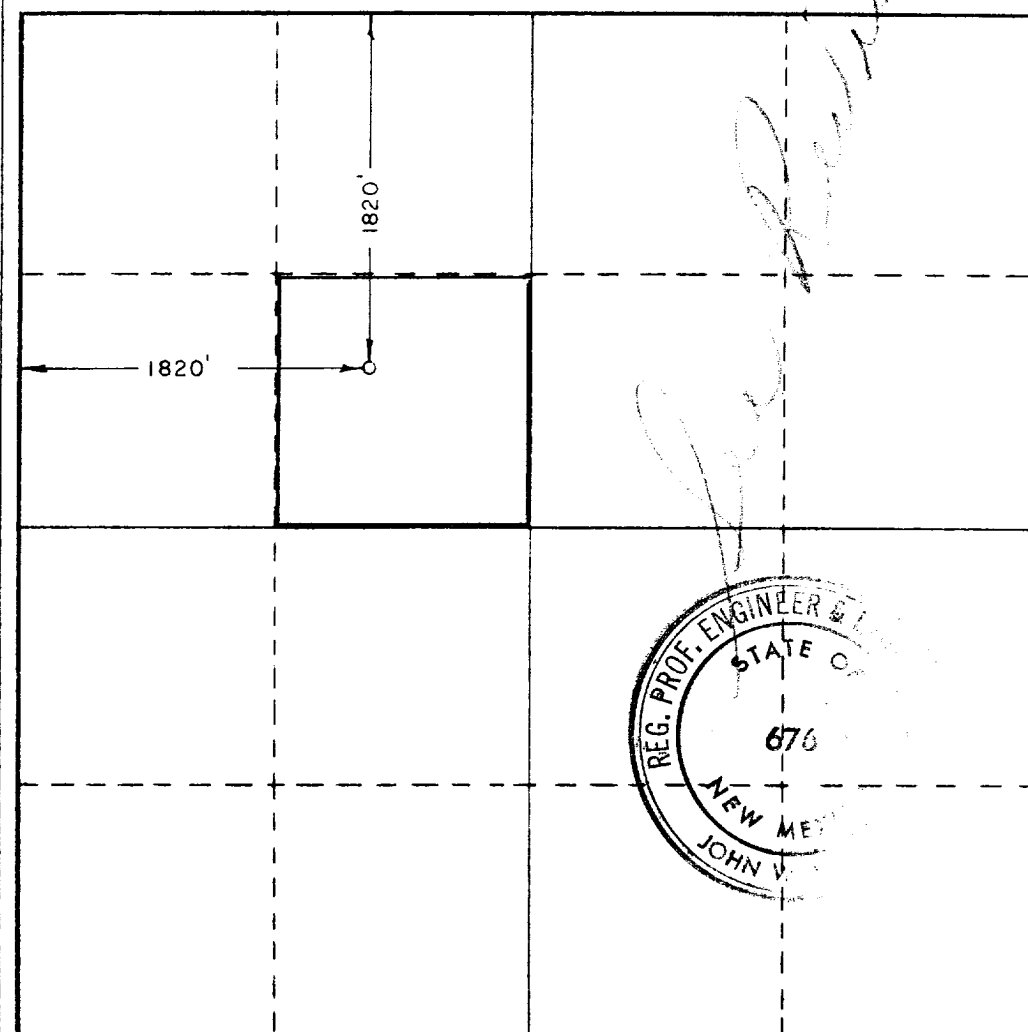
Operator GETTY OIL COMPANY			Lease SEP 5 11 28 AM '68 JUSTIS MCKEE UNIT		Well No. 128
Unit Letter F	Section 24	Township 25 SOUTH	Range 37 EAST	County LEA	
Actual Footage Location of Well: 1820 feet from the NORTH line and 1820 feet from the WEST line					
Ground Level Elev. 3078	Producing Formation McKee		Pool UNDERSIGNED	Dedicated Acreage: 40 Acres	

1. Outline the acreage dedicated to the subject well by colored pencil or hachure marks on the plat below.
2. If more than one lease is dedicated to the well, outline each and identify the ownership thereof (both as to working interest and royalty).
3. If more than one lease of different ownership is dedicated to the well, have the interests of all owners been consolidated by communitization, unitization, force-pooling, etc?

☒ Yes ☐ No If answer is "yes," type of consolidation **unitization**

If answer is "no," list the owners and tract descriptions which have actually been consolidated. (Use reverse side of this form if necessary.) _____

No allowable will be assigned to the well until all interests have been consolidated (by communitization, unitization, forced-pooling, or otherwise) or until a non-standard unit, eliminating such interests, has been approved by the Commission.



CERTIFICATION

I hereby certify that the information contained herein is true and complete to the best of my knowledge and belief.

**ORIGINAL SIGNED BY
HAROLD G. VEST**

Name	H. G. Vest
Position	Area Engineer
Company	Getty Oil Company
Date	September 3, 1968

I hereby certify that the well location shown on this plat was plotted from field notes of actual surveys made by me or under my supervision, and that the same is true and correct to the best of my knowledge and belief.

Date Surveyed
AUGUST 29, 1968

Registered Professional Engineer
and/or Land Surveyor

John V. West
Certificate No. **676**

