

N MICO OIL CONSERVATION COMMISS
WELL LOCATION AND ACREAGE DEDICATION PLAT

Form C-102
Supersedes C-128
Effective 1-1-65

All distances must be from the outer boundary of the well.

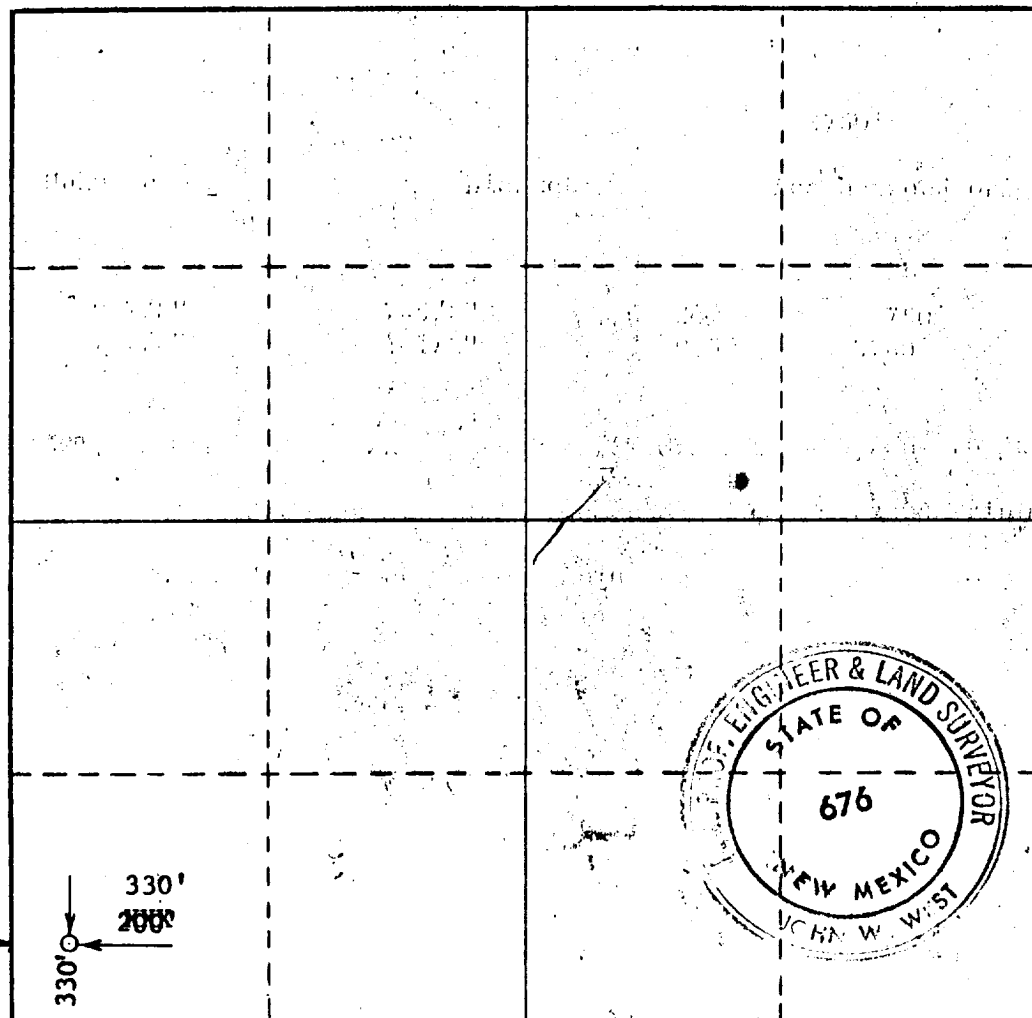
Operator AMERADA PETROLEUM CORP.		Lease APR 15 10 58 AM '69		Well No. 204
Unit Letter M	Section 28	Township 24 SOUTH	Range 37 EAST	County LEA
Actual Footage Location of Well: 330 feet from the SOUTH line and 330 feet from the WEST line				
Ground Level Elev.	Producing Formation Langlie Mattin	Pool Langlie Mattin	Dedicated Acreage: Acres	

1. Outline the acreage dedicated to the subject well by colored pencil or hachure marks on the plat below.
2. If more than one lease is dedicated to the well, outline each and identify the ownership thereof (both as to working interest and royalty).
3. If more than one lease of different ownership is dedicated to the well, have the interests of all owners been consolidated by communitization, unitization, force-pooling, etc?

☒ Yes ☐ No If answer is "yes," type of consolidation **Unitization**

If answer is "no," list the owners and tract descriptions which have actually been consolidated. (Use reverse side of this form if necessary.) _____

No allowable will be assigned to the well until all interests have been consolidated (by communitization, unitization, forced-pooling, or otherwise) or until a non-standard unit, eliminating such interests, has been approved by the Commission.



CERTIFICATION

I hereby certify that the information contained herein is true and complete to the best of my knowledge and belief.

Name *[Signature]*
Position **District Superintendent**

Company **Amerada Petroleum Corporation**

Date **April 14, 1969**

I hereby certify that the well location shown on this plat was plotted from field notes of actual surveys made by me or under my supervision, and that the same is true and correct to the best of my knowledge and belief.

Date Surveyed **FEB. 4, 1969**

Registered Professional Engineer and/or Land Surveyor

[Signature]
Certificate No. **676**