

UNITED STATES  
DEPARTMENT OF THE INTERIOR  
GEOLOGICAL SURVEY

SUBMIT IN TRIPLICATE\*  
(Other instructions on reverse side)

Form approved.  
Budget Bureau No. 42-R1425.

5. LEASE DESIGNATION AND SERIAL NO.

NM-0.321613

6. IF INDIAN, ALLOTTEE OR TRIBE NAME

7. UNIT AGREEMENT NAME

NMFU

8. FARM OR LEASE NAME

JACK B-26

9. WELL NO.

6

10. FIELD AND POOL OR WILDCAT

JUSTIS BLINERBY

11. SEC., T., R., M., OR B.L.K. AND SURVEY OR AREA

Sec. 26, T-24S, R-37E

12. COUNTY OR PARISH 13. STATE

Lea N. Mex.

1a. TYPE OF WORK

DRILL ☒

DEEPEN ☐

PLUG BACK ☐

b. TYPE OF WELL

OIL WELL ☒

GAS WELL ☐

OTHER

SINGLE ZONE ☐

MULTIPLE ZONE ☐

2. NAME OF OPERATOR

Continental Oil Company

3. ADDRESS OF OPERATOR

Box 460, Hobbs, N. Mex.

4. LOCATION OF WELL (Report location clearly and in accordance with any State requirements.)\*

At surface 1650' FSL & 1980' FWL of Sec. 26, T-24S, R-37E in Lea county, N. Mex.

At proposed prod. zone

Same

14. DISTANCE IN MILES AND DIRECTION FROM NEAREST TOWN OR POST OFFICE\*

6 miles northeast of Hobbs, N. Mex.

15. DISTANCE FROM PROPOSED\*

LOCATION TO NEAREST PROPERTY OR LEASE LINE, FT. (Also to nearest drlg. unit line, if any)

18. DISTANCE FROM PROPOSED LOCATION\*

TO NEAREST WELL, DRILLING, COMPLETED, OR APPLIED FOR, ON THIS LEASE, FT.

16. NO. OF ACRES IN LEASE

280

19. PROPOSED DEPTH

5,600'

17. NO. OF ACRES ASSIGNED TO THIS WELL

40

20. ROTARY OR CABLE TOOLS

Rotary

21. ELEVATIONS (Show whether DF, RT, GR, etc.)

3200' DF (est.)

22. APPROX. DATE WORK WILL START\*

11-1-69

23.

PROPOSED CASING AND CEMENTING PROGRAM

SIZE OF HOLE	SIZE OF CASING	WEIGHT PER FOOT	SETTING DEPTH	QUANTITY OF CEMENT
12 1/4	8 7/8	24	980	410 CIRCUM
7 7/8	5 1/2	14	5,600	510

It is proposed to drill a straight hole to 5,600' and complete the well in the Blinerby zone.

IN ABOVE SPACE DESCRIBE PROPOSED PROGRAM: If proposal is to deepen or plug back, give data on present productive zone and proposed new productive zone. If proposal is to drill or deepen directionally, give pertinent data on subsurface locations and measured and true vertical depths. Give blowout preventer program, if any.

24.

SIGNED

Robert Gault

TITLE

Adm. Section Chief

DATE

10-2-69

(This space for Federal or State office use)

PERMIT NO.

APPROVAL DATE

APPROVED BY

TITLE

CONDITIONS OF APPROVAL, IF ANY:

APPROVED

OCT 3 1969

ARTHUR R. BROWN  
DISTRICT ENGINEER

\*See Instructions On Reverse Side

UL 5 716

Plan Ann Hobbs 2

Plan Mid-2

Alt Rich 200 2

NEW MEXICO OIL CONSERVATION COMMISSION  
WELL LOCATION AND ACREAGE DEDICATION PLAT

Form C-102  
Supersedes C-123  
Effective 1-1-65

All distances must be from the outer boundaries of the Section.

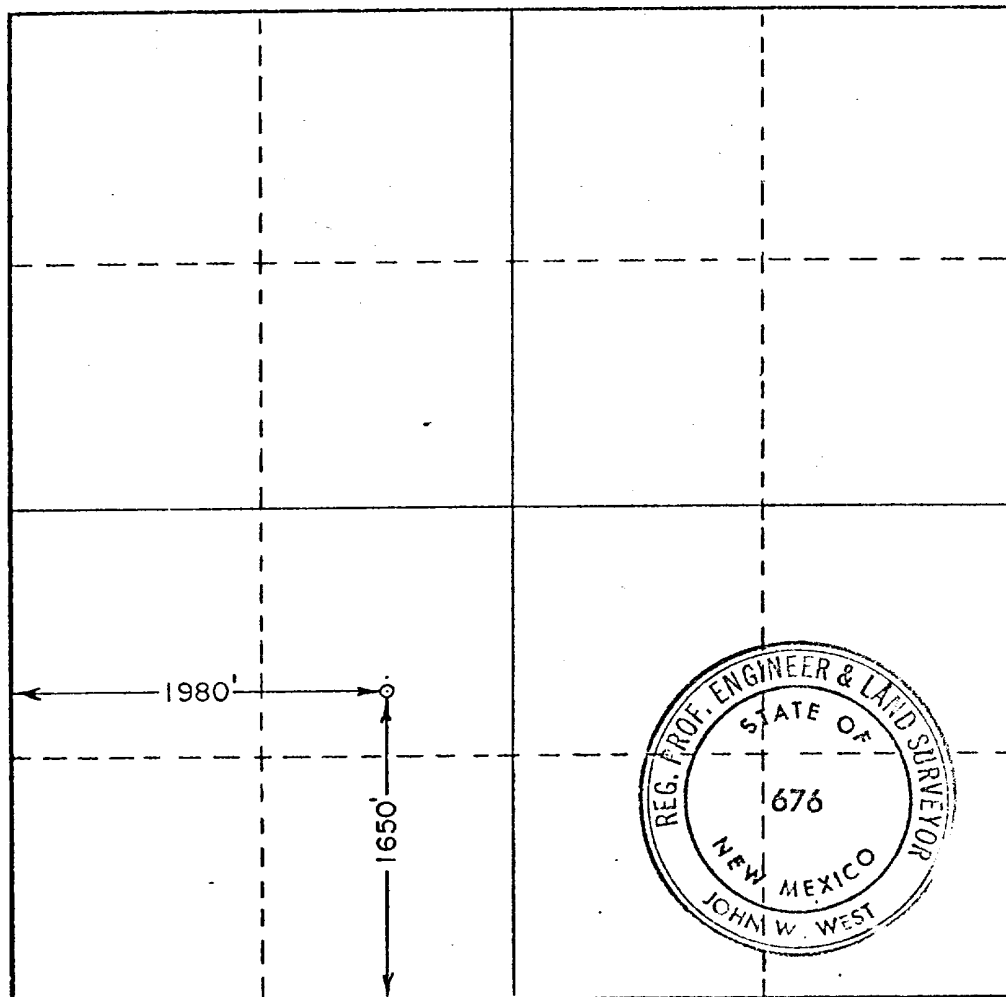
Operator <b>CONTINENTAL OIL CO.</b>		Lease <b>JACK B-26</b>		Well No. <b>6</b>
Unit Letter <b>K</b>	Section <b>26</b>	Township <b>24 SOUTH</b>	Range <b>37 EAST</b>	County <b>LEA</b>
Actual Footage Location of Well: <b>1650</b> feet from the <b>SOUTH</b> line and <b>1980</b> feet from the <b>WEST</b> line				
Ground Level Elev.	Producing Formation <i>Justin Blinley</i>		Pool <i>Blinley</i>	Dedicated Acreage: <b>4.0</b> Acres

- Outline the acreage dedicated to the subject well by colored pencil or hachure marks on the plat below.
- If more than one lease is dedicated to the well, outline each and identify the ownership thereof (both as to working interest and royalty).
- If more than one lease of different ownership is dedicated to the well, have the interests of all owners been consolidated by communitization, unitization, force-pooling, etc?

☐ Yes ☐ No If answer is "yes," type of consolidation \_\_\_\_\_

If answer is "no," list the owners and tract descriptions which have actually been consolidated. (Use reverse side of this form if necessary.) \_\_\_\_\_

No allowable will be assigned to the well until all interests have been consolidated (by communitization, unitization, forced-pooling, or otherwise) or until a non-standard unit, eliminating such interests, has been approved by the Commission.



CERTIFICATION

I hereby certify that the information contained herein is true and complete to the best of my knowledge and belief.

Name *Robert Gault III*  
Position *Adm. Section Chief*  
Company *Continental Oil Co.*  
Date *10-2-69*

I hereby certify that the well location shown on this plat was plotted from field notes of actual surveys made by me or under my supervision, and that the same is true and correct to the best of my knowledge and belief.

Date Surveyed  
**SEPTEMBER 27, 1969**

Registered Professional Engineer and/or Land Surveyor

*John W. West*  
Certificate No. **676**

