

NEW M CO OIL CONSERVATION COMMISSION
WELL LOCATION AND ACREAGE DEDICATION PLAT

Form C-102
Supersedes C-128
Effective 1-1-65

All distances must be from the outer boundaries of the Section.

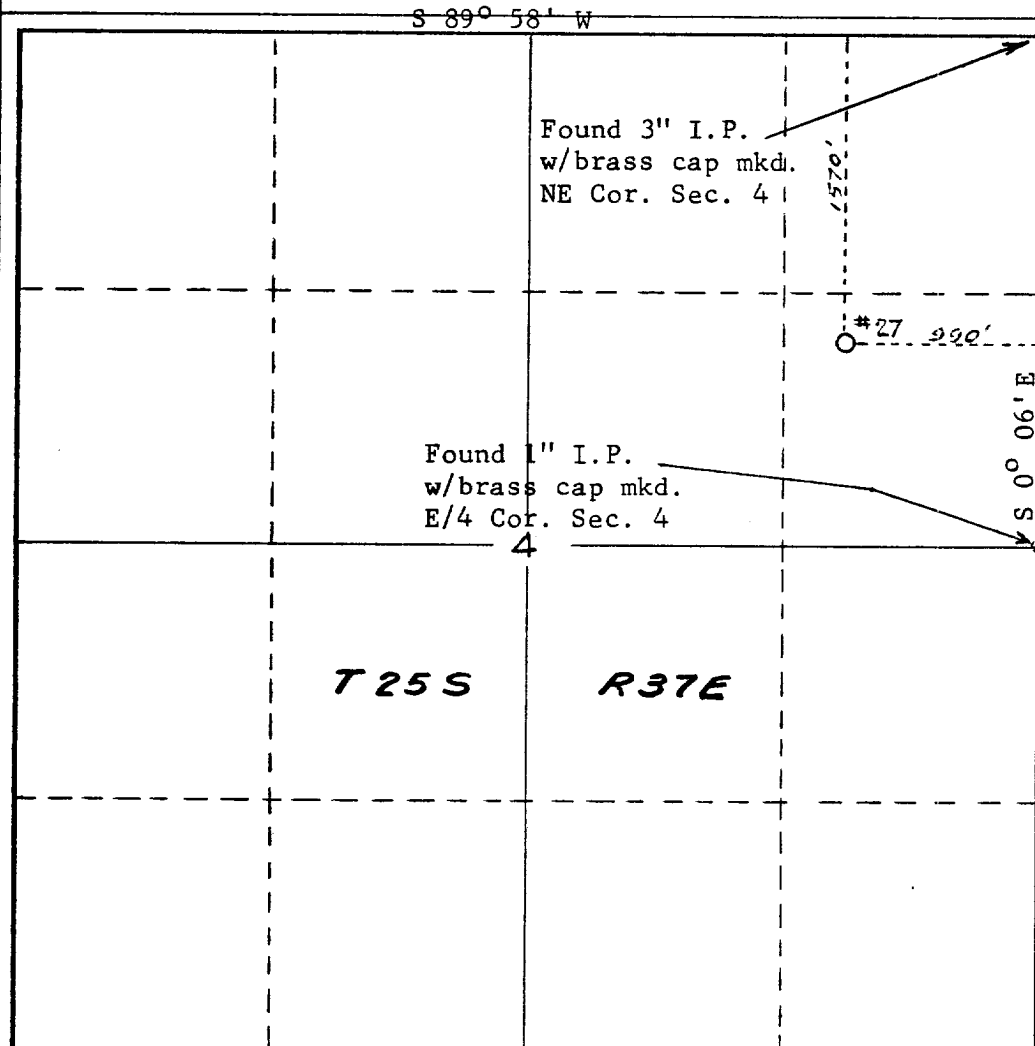
Operator Mobil Oil Corporation			Lease Humphrey Queen Unit		Well No. 27
Unit Letter H	Section 4	Township 25-S	Range 37-E	County Lea	
Actual Footage Location of Well: 1570 feet from the north line and 990 feet from the east line					
Ground Level Elev. 3158'	Producing Formation Queen		Pool Langlie-Mattix		Dedicated Acreage: 40 Acres

1. Outline the acreage dedicated to the subject well by colored pencil or hachure marks on the plat below.
2. If more than one lease is dedicated to the well, outline each and identify the ownership thereof (both as to working interest and royalty).
3. If more than one lease of different ownership is dedicated to the well, have the interests of all owners been consolidated by communitization, unitization, force-pooling, etc?

☐ Yes ☐ No If answer is "yes," type of consolidation _____

If answer is "no," list the owners and tract descriptions which have actually been consolidated. (Use reverse side of this form if necessary.) _____

No allowable will be assigned to the well until all interests have been consolidated (by communitization, unitization, forced-pooling, or otherwise) or until a non-standard unit, eliminating such interests, has been approved by the Commission.



CERTIFICATION

I hereby certify that the information contained herein is true and complete to the best of my knowledge and belief.

C. R. Kreuz
Name **C. R. Kreuz**

Position
Sr. Production Engineer

Company
Mobil Oil Corporation

Date
November 21, 1969

I hereby certify that the well location shown on this plat was plotted from field notes of ~~W. H. Seerey~~ made by me or under my supervision and that the same are true and correct to the best of my knowledge and belief.

John H. Seerey
No. **3572**

Date Surveyed
November 18, 1969

Registered Professional Engineer and/or Land Surveyor

John H. Seerey

Certificate No.
3572