

NEW MEXICO OIL CONSERVATION COMMISSION
WELL LOCATION AND ACREAGE DEDICATION PLAT

Form C-102
Supersedes C-128
Effective 1-1-65

All distances must be from the outer boundaries of the Section

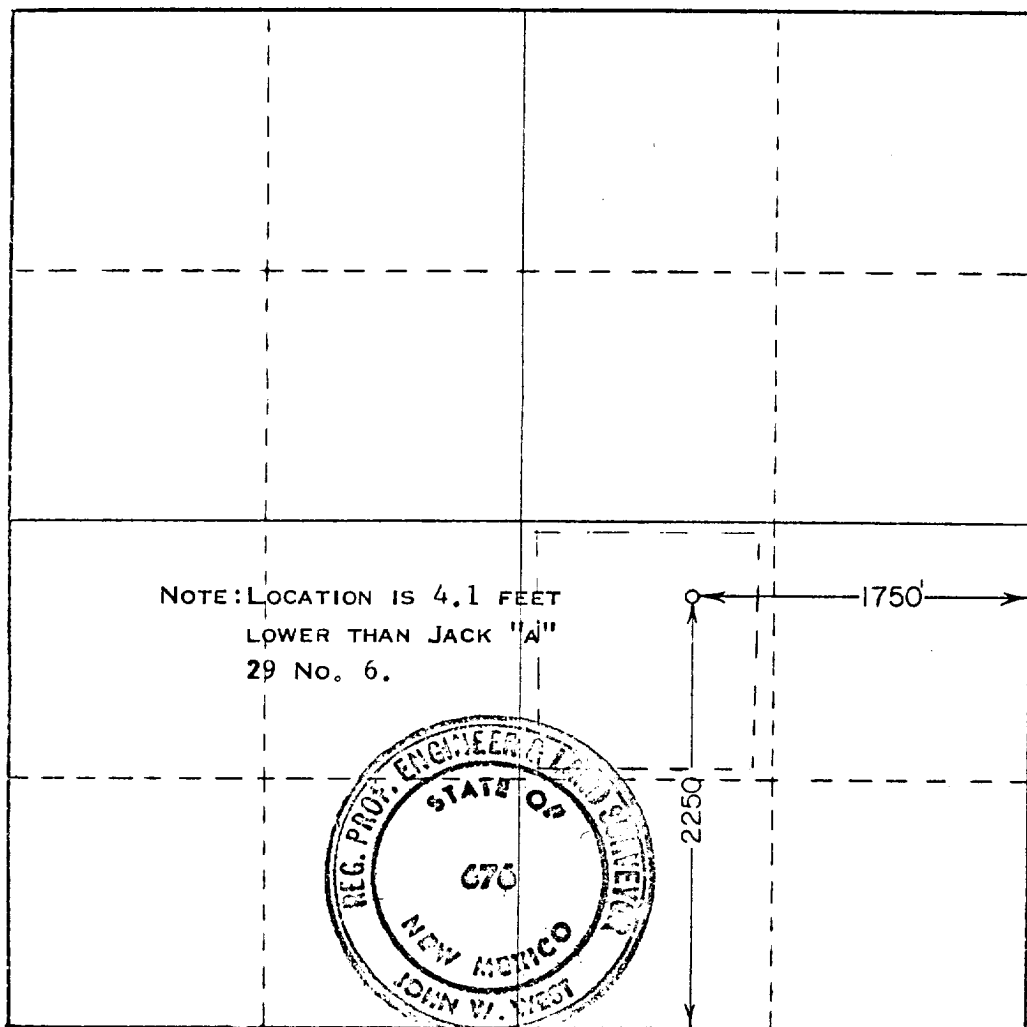
| | | | | | |
|--|---|-----------------------------|-----------------------------|---------------------------------------|----------------------|
| Operator CONTINENTAL OIL CO. | | | Lease JACK "A" 29 | | Well No. 7 |
| Unit Letter J | Section 29 | Township 24 SOUTH | Range 37 EAST | County LEA | |
| Actual Footage Location of Well: 2250 feet from the SOUTH line and 1750 feet from the EAST line | | | | | |
| Ground Level Elev. | Producing Formation <i>Tangier-Madison 7 River One</i> | | Pool <i>Queen</i> | Dedicated Acreage: 40 Acres | |

1. Outline the acreage dedicated to the subject well by colored pencil or hachure marks on the plat below.
2. If more than one lease is dedicated to the well, outline each and identify the ownership thereof (both as to working interest and royalty).
3. If more than one lease of different ownership is dedicated to the well, have the interests of all owners been consolidated by communitization, unitization, force-pooling, etc?

☐ Yes ☐ No If answer is "yes," type of consolidation _____

If answer is "no," list the owners and tract descriptions which have actually been consolidated. (Use reverse side of this form if necessary.) _____

No allowable will be assigned to the well until all interests have been consolidated (by communitization, unitization, forced-pooling, or otherwise) or until a non-standard unit, eliminating such interests, has been approved by the Commission.



CERTIFICATION

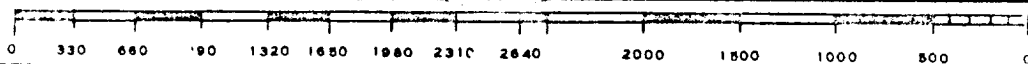
I hereby certify that the information contained herein is true and complete to the best of my knowledge and belief.

Name: *John V. West*
Position: *Section Chief*
Company: *Continental Oil Co.*
Date: *5-4-71*

I hereby certify that the well location shown on this plat was plotted from field notes of actual surveys made by me or under my supervision, and that the same is true and correct to the best of my knowledge and belief.

Date Surveyed
APRIL 26, 1971
Registered Professional Engineer and/or Land Surveyor

John V. West
Certificate No. **676**



RECEIVED

MAY 18 1971

OIL CONSERVATION COMM.
HOBBS, N. M.

113

COUNTY LEA FIELD Langlie Mattix STATE NM 30-025-23779
 OPR CONTINENTAL OIL CO. MAP
7 Jack A-29
Sec 29, T-24-S, R-37-E CO-ORD
2250' FSL, 1750' FEL of Sec
Spd 5-19-71
Cmp 6-8-71 CLASS EL 3271/2

| FORMATION | DATUM | FORMATION | DATUM |
|--------------------------|-------|-----------|-------|
| CSG & SX TUBING | | | |
| 8 5/8" at 770' w/350 SX | | | |
| 5 1/2" at 3660' w/150 SX | | | |
| | | | |
| | | | |
| | | | |
| | | | |
| LOGS EL GR RA IND HC A | | | |
| | | | |

TD 3660'; PBD 3609'

IP (Seven Rivers) Perfs 3395-3579' P 52 BOPD + 36 BW. Pot based on 24 hr test. GOR 615; Grav 36.6.

Distribution limited and publication prohibited by subscribers' agreement.
 Reproduction rights reserved by Williams & Lee Logging Service, Inc.

CONT. Leatherwood PROP DEPTH 3730' TYPE RT
 DATE

F.R. 5-18-71; Opr's Elev. 3271' DF
 PD 3730' RT (Queen)
 Contractor - Leatherwood
 5-24-71 Drlg. 3103' sd & lm
 5-28-71 TD 3660'; WOC
 6-7-71 TD 3660'; PBD 3609'; Ppg 1d
 Perf @ 3395', 3397', 3475', 3477', 3510', 3514',
 3530', 3535', 3579' w/1 SPI
 Acid (3395-3579') 2250 gals
 Frac (3395-3579') 30,000 gals jelled brine wtr +
 60,000# sd
 6-14-71 TD 3660'; PBD 3609'; TO Fmp
 Ppd 58 BO + 31 BLW in 24 hrs
 6-21-71 TD 3660'; PBD 3609'; TO Fmp
 6-28-71 TD 3660'; PBD 3609'; WO Pot

LEA
CONTINENTAL OIL CO.

Langlie Mattix
#7 Jack A-29

NM Sec 29, T24S, R37E
Page #2

| | |
|---------|--|
| 6-28-71 | Continued |
| | Ppd 52 BO + 36 BW in 24 hrs, Grav 36.6 |
| 7-6-71 | TD 3660'; PBD 3609'; WO Pot |
| 7-13-71 | TD 3660'; PBD 3609'; COMPLETE |
| 7-15-71 | COMPLETION REPORTED |