

**NEW MEXICO OIL CONSERVATION COMMISSION
WELL LOCATION AND ACREAGE DEDICATION PLAT**

Form C-102
Supersedes C-128
Effective 1-1-65

All distances must be from the outer boundaries of the Section.

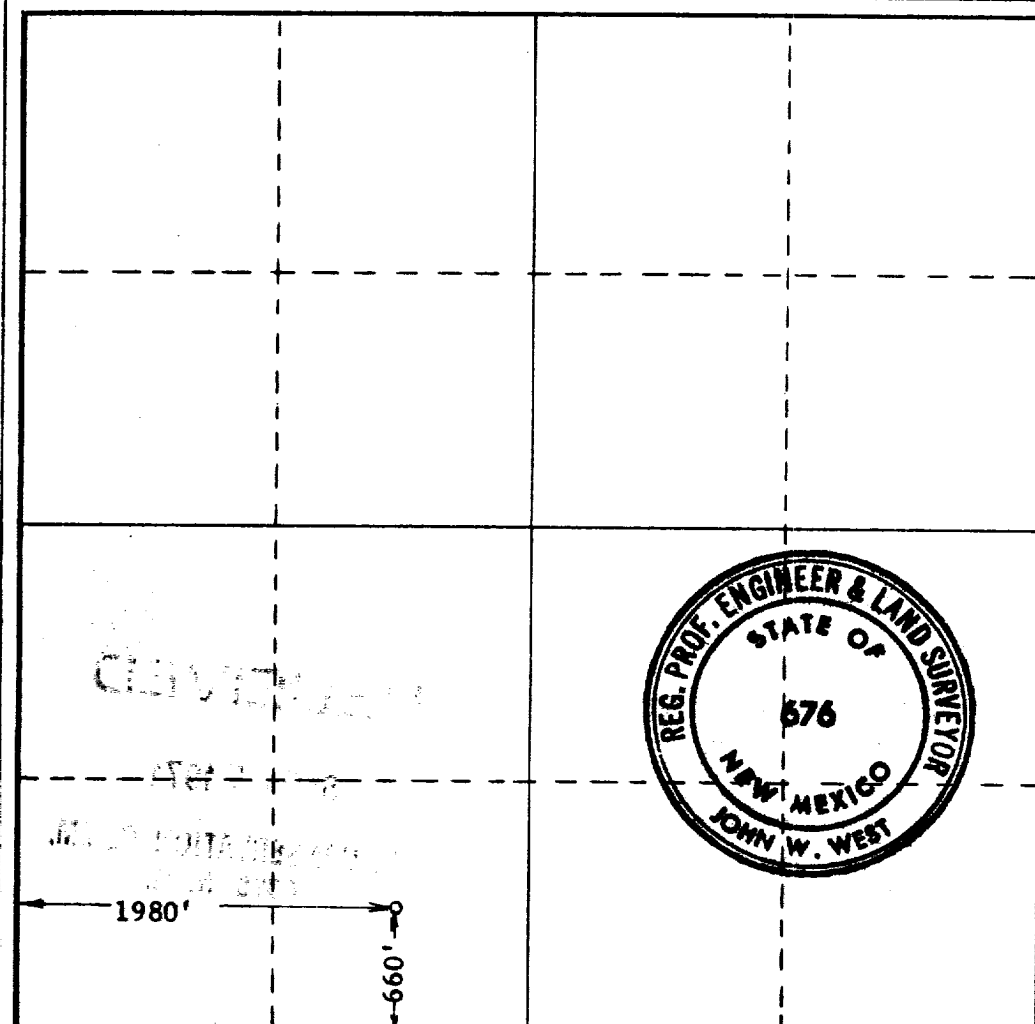
Operator UNION TEXAS PETROLEUM CORP.			Lease Langlie-Jal Unit "L J U"		Well No. 29
Unit Letter N	Section 31	Township 24 SOUTH	Range 37 EAST	County LEA	
Actual Footage Location of Well: 1980 feet from the WEST line and 660 feet from the SOUTH line					
Ground Level Elev. NA	Producing Formation Queen		Pool Langlie-Mattix	Dedicated Acreage: Unitized Acres	

1. Outline the acreage dedicated to the subject well by colored pencil or hachure marks on the plat below.
2. If more than one lease is dedicated to the well, outline each and identify the ownership thereof (both as to working interest and royalty).
3. If more than one lease of different ownership is dedicated to the well, have the interests of all owners been consolidated by communitization, unitization, force-pooling, etc?

☐ Yes ☐ No If answer is "yes," type of consolidation _____

If answer is "no," list the owners and tract descriptions which have actually been consolidated. (Use reverse side of this form if necessary.) _____

No allowable will be assigned to the well until all interests have been consolidated (by communitization, unitization, forced-pooling, or otherwise) or until a non-standard unit, eliminating such interests, has been approved by the Commission.



CERTIFICATION

I hereby certify that the information contained herein is true and complete to the best of my knowledge and belief.

Name *R. W. Manry*
R. W. Manry
 Position
Operations Supt. Western
 Company
UNION TEXAS PETROLEUM CORP.

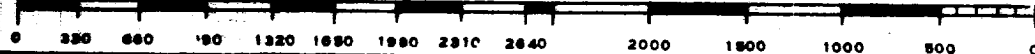
Date
Sept. 2, 1971

I hereby certify that the well location shown on this plat was plotted from field notes of actual surveys made by me or under my supervision, and that the same is true and correct to the best of my knowledge and belief.

Date Surveyed
JULY, 29, 1971

Registered Professional Engineer and/or Land Surveyor

John W. West
 Certificate No. **676**



FILE

RECEIVED

SEP - 7 1971

**OIL CONSERVATION COMM.
HOBBS, N. M.**