

**NEW MEXICO OIL CONSERVATION COMMISSION
WELL LOCATION AND ACREAGE DEDICATION PLAT**

Form C-102
Supersedes C-128
Effective 1-1-65

All distances must be from the outer boundaries of the Section

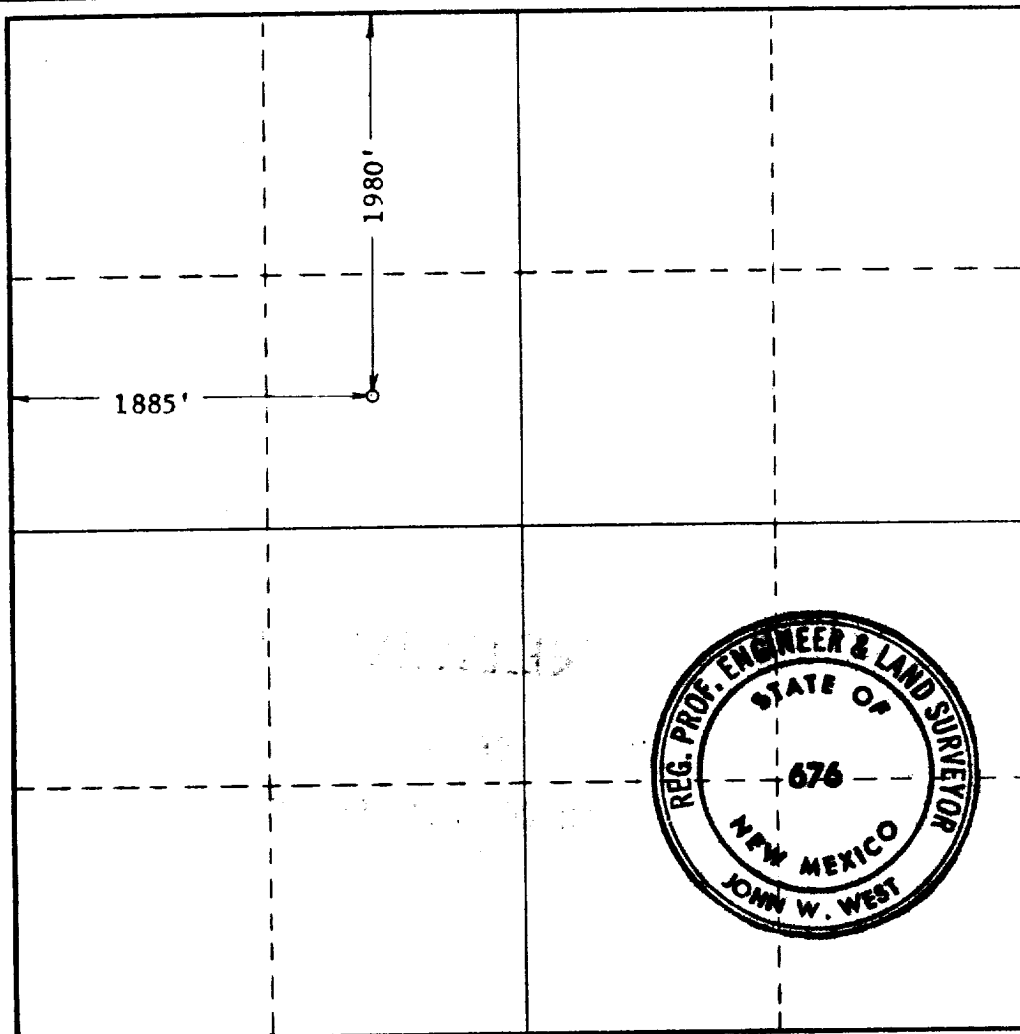
Operator UNION TEXAS PETROLEUM CORP.			Lease Langlie-Jal Unit "L J U"		Well No. 47
Unit Letter F	Section 5	Township 25 SOUTH	Range 37 EAST	County LEA	
Actual Footage Location of Well: 1980 feet from the NORTH line and 1885 feet from the WEST line					
Ground Level Elev. NA	Producing Formation Queen		Pool Langlie-Mattix		Dedicated Acreage: Unitized Acres

1. Outline the acreage dedicated to the subject well by colored pencil or hachure marks on the plat below.
2. If more than one lease is dedicated to the well, outline each and identify the ownership thereof (both as to working interest and royalty).
3. If more than one lease of different ownership is dedicated to the well, have the interests of all owners been consolidated by communitization, unitization, force-pooling, etc?

☐ Yes ☐ No If answer is "yes," type of consolidation _____

If answer is "no," list the owners and tract descriptions which have actually been consolidated. (Use reverse side of this form if necessary.) _____

No allowable will be assigned to the well until all interests have been consolidated (by communitization, unitization, forced-pooling, or otherwise) or until a non-standard unit, eliminating such interests, has been approved by the Commission.



CERTIFICATION

I hereby certify that the information contained herein is true and complete to the best of my knowledge and belief.

Name

R. W. Manry

Position

Operations Supt. Western Area

Company

UNION TEXAS PETROLEUM CORP.

Date

September 2, 1971

I hereby certify that the well location shown on this plat was plotted from field notes of actual surveys made by me or under my supervision, and that the same is true and correct to the best of my knowledge and belief.

Date Surveyed

AUGUST 11, 1971

Registered Professional Engineer and/or Land Surveyor

Certificate No.

676

0 320 640 960 1280 1600 1920 2240 2560 2880 3200 3520 3840 4160 4480 4800 5120 5440 5760 6080 6400 6720 7040 7360 7680 8000 8320 8640 8960 9280 9600 9920 10240 10560 10880 11200 11520 11840 12160 12480 12800 13120 13440 13760 14080 14400 14720 15040 15360 15680 16000 16320 16640 16960 17280 17600 17920 18240 18560 18880 19200 19520 19840 20160 20480 20800 21120 21440 21760 22080 22400 22720 23040 23360 23680 24000 24320 24640 24960 25280 25600 25920 26240 26560 26880 27200 27520 27840 28160 28480 28800 29120 29440 29760 30080 30400 30720 31040 31360 31680 32000 32320 32640 32960 33280 33600 33920 34240 34560 34880 35200 35520 35840 36160 36480 36800 37120 37440 37760 38080 38400 38720 39040 39360 39680 40000 40320 40640 40960 41280 41600 41920 42240 42560 42880 43200 43520 43840 44160 44480 44800 45120 45440 45760 46080 46400 46720 47040 47360 47680 48000 48320 48640 48960 49280 49600 49920 50240 50560 50880 51200 51520 51840 52160 52480 52800 53120 53440 53760 54080 54400 54720 55040 55360 55680 56000 56320 56640 56960 57280 57600 57920 58240 58560 58880 59200 59520 59840 60160 60480 60800 61120 61440 61760 62080 62400 62720 63040 63360 63680 64000 64320 64640 64960 65280 65600 65920 66240 66560 66880 67200 67520 67840 68160 68480 68800 69120 69440 69760 70080 70400 70720 71040 71360 71680 72000 72320 72640 72960 73280 73600 73920 74240 74560 74880 75200 75520 75840 76160 76480 76800 77120 77440 77760 78080 78400 78720 79040 79360 79680 80000 80320 80640 80960 81280 81600 81920 82240 82560 82880 83200 83520 83840 84160 84480 84800 85120 85440 85760 86080 86400 86720 87040 87360 87680 88000 88320 88640 88960 89280 89600 89920 90240 90560 90880 91200 91520 91840 92160 92480 92800 93120 93440 93760 94080 94400 94720 95040 95360 95680 96000 96320 96640 96960 97280 97600 97920 98240 98560 98880 99200 99520 99840 100160 100480 100800 101120 101440 101760 102080 102400 102720 103040 103360 103680 104000 104320 104640 104960 105280 105600 105920 106240 106560 106880 107200 107520 107840 108160 108480 108800 109120 109440 109760 110080 110400 110720 111040 111360 111680 112000 112320 112640 112960 113280 113600 113920 114240 114560 114880 115200 115520 115840 116160 116480 116800 117120 117440 117760 118080 118400 118720 119040 119360 119680 120000 120320 120640 120960 121280 121600 121920 122240 122560 122880 123200 123520 123840 124160 124480 124800 125120 125440 125760 126080 126400 126720 127040 127360 127680 128000 128320 128640 128960 129280 129600 129920 130240 130560 130880 131200 131520 131840 132160 132480 132800 133120 133440 133760 134080 134400 134720 135040 135360 135680 136000 136320 136640 136960 137280 137600 137920 138240 138560 138880 139200 139520 139840 140160 140480 140800 141120 141440 141760 142080 142400 142720 143040 143360 143680 144000 144320 144640 144960 145280 145600 145920 146240 146560 146880 147200 147520 147840 148160 148480 148800 149120 149440 149760 150080 150400 150720 151040 151360 151680 152000 152320 152640 152960 153280 153600 153920 154240 154560 154880 155200 155520 155840 156160 156480 156800 157120 157440 157760 158080 158400 158720 159040 159360 159680 160000 160320 160640 160960 161280 161600 161920 162240 162560 162880 163200 163520 163840 164160 164480 164800 165120 165440 165760 166080 166400 166720 167040 167360 167680 168000 168320 168640 168960 169280 169600 169920 170240 170560 170880 171200 171520 171840 172160 172480 172800 173120 173440 173760 174080 174400 174720 175040 175360 175680 176000 176320 176640 176960 177280 177600 177920 178240 178560 178880 179200 179520 179840 180160 180480 180800 181120 181440 181760 182080 182400 182720 183040 183360 183680 184000 184320 184640 184960 185280 185600 185920 186240 186560 186880 187200 187520 187840 188160 188480 188800 189120 189440 189760 190080 190400 190720 191040 191360 191680 192000 192320 192640 192960 193280 193600 193920 194240 194560 194880 195200 195520 195840 196160 196480 196800 197120 197440 197760 198080 198400 198720 199040 199360 199680 200000

ELF

RECEIVED

SEP 14 1971

**OIL CONSERVATION COMM.
HOBBS, N. M.**