

Form C-102
Supersedes C-128
Effective 1-1-65

All distances must be from the outer boundaries of the Section.

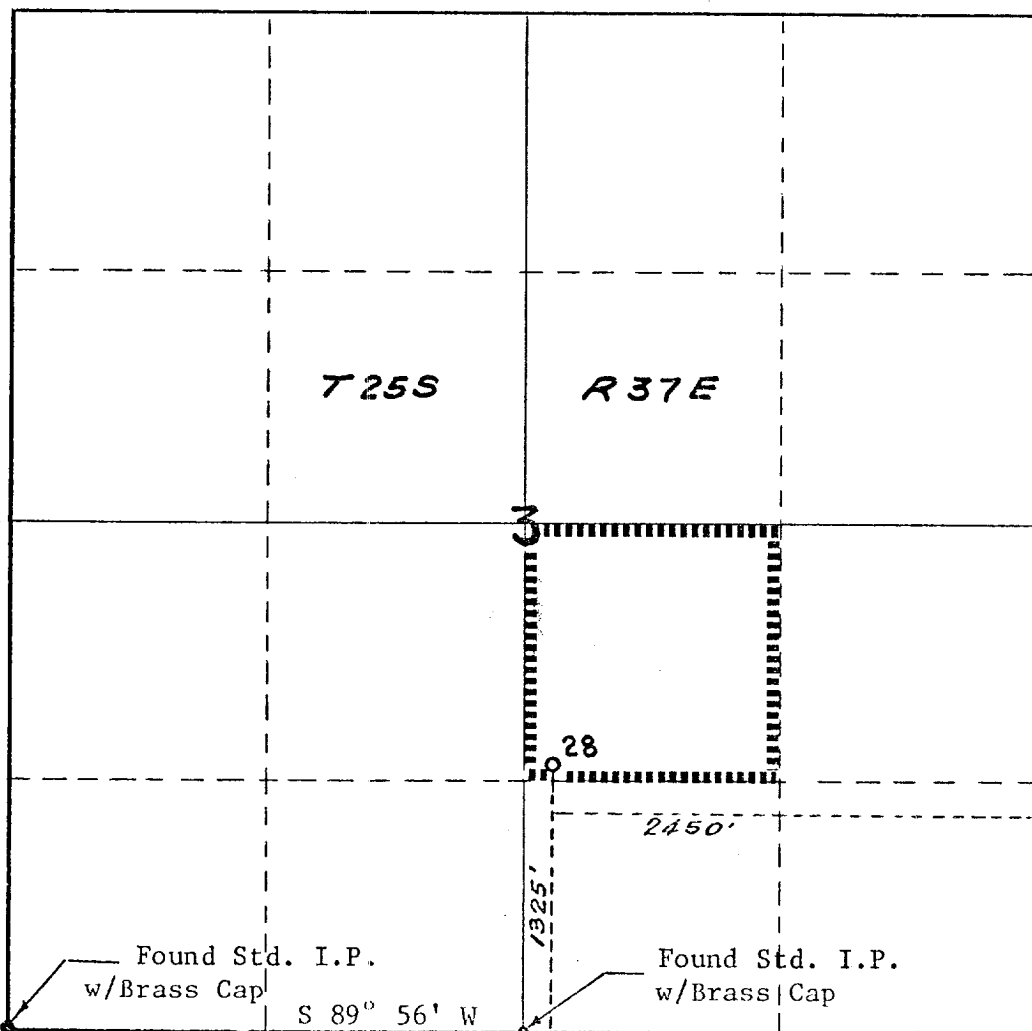
Operator Mobil Oil Corporation			Lease Humphrey Queen Unit		Well No. 28
Unit Letter J	Section 3	Township 25S	Range 37E	County Lea	
Actual Footage Location of Well:					
2450		feet from the	East	line and	1325
				feet from the	South
				line	
Ground Level Elev. 3134.4	Producing Formation Queen		Pool Langlie-Mattix		Dedicated Acreage: 40 Acres

1. Outline the acreage dedicated to the subject well by colored pencil or hachure marks on the plat below.
2. If more than one lease is dedicated to the well, outline each and identify the ownership thereof (both as to working interest and royalty).
3. If more than one lease of different ownership is dedicated to the well, have the interests of all owners been consolidated by communitization, unitization, force-pooling, etc?

☐ Yes ☐ No If answer is "yes," type of consolidation _____

If answer is "no," list the owners and tract descriptions which have actually been consolidated. (Use reverse side of this form if necessary.) _____

No allowable will be assigned to the well until all interests have been consolidated (by communitization, unitization, forced-pooling, or otherwise) or until a non-standard unit, eliminating such interests, has been approved by the Commission.



CERTIFICATION

I hereby certify that the information contained herein is true and complete to the best of my knowledge and belief.

A. W. Bond

Name _____

A. D. Bond

Position

Proration Staff Assistant

Company

Mobil Oil Corporation

Date _____

August 12, 1971

I hereby certify that the well location shown on this plat was plotted from field notes of actual surveys made by me or under my supervision, and that the same is true and correct to the best of my knowledge and belief.

M. G. Lee

Date Surveyed _____

August 10, 1971

Registered Professional Engineer
and/or Land Surveyor

W. D. Gill

Certificate No.

1415

113

RECEIVED

COJ 121971

OIL CONSERVATION COMM.
HOBBS, N. M.