

UNITED STATES  
DEPARTMENT OF THE INTERIOR  
BUREAU OF LAND MANAGEMENT

SUBMIT IN T. ICATE  
(Other instructions on  
reverse side)

Form approved.  
Budget Bureau No. 1004-0136  
Expires August 31, 1985

30-025-24035

APPLICATION FOR PERMIT TO DRILL, DEEPEN, OR PLUG BACK

1a. TYPE OF WORK

DRILL ☐

DEEPEN ☒

PLUG BACK ☐

b. TYPE OF WELL

OIL  
WELL ☐

GAS  
WELL ☐

OTHER

Re-entry

SINGLE  
ZONE ☒

MULTIPLE  
ZONE ☐

2. NAME OF OPERATOR

Texaco Producing Inc.

3. ADDRESS OF OPERATOR

P. O. Box 728, Hobbs, NM 88240

4. LOCATION OF WELL (Report location clearly and in accordance with any State requirements.)

At surface

1980' FNL & 990' FEL

At proposed prod. zone

14. DISTANCE IN MILES AND DIRECTION FROM NEAREST TOWN OR POST OFFICE\*

6 Miles NE of Jal, New Mexico

15. DISTANCE FROM PROPOSED\*

2970'

LOCATION TO NEAREST  
PROPERTY OR LEASE LINE, FT.

(Also to nearest drig. unit line, if any) (330')

18. DISTANCE FROM PROPOSED LOCATION\*

TO NEAREST WELL, DRILLING, COMPLETED,  
OR APPLIED FOR, ON THIS LEASE, FT.

667'

16. NO. OF ACRES IN LEASE

3533.5

17. NO. OF ACRES ASSIGNED  
TO THIS WELL

40

19. PROPOSED DEPTH

6800'

20. ROTARY OR CABLE TOOLS

Pulling Unit

21. ELEVATIONS (Show whether DF, RT, GR, etc.)

3146' D.F.

22. APPROX. DATE WORK WILL START\*

January 22, 1985

23.

PROPOSED CASING AND CEMENTING PROGRAM

SIZE OF HOLE	SIZE OF CASING	WEIGHT PER FOOT	SETTING DEPTH	QUANTITY OF CEMENT
17-1/2"	13-3/8"	68	605'	700 Sxs - Cement Circulated
12-1/4"	9-5/8"	36 & 40	3814'	1450 Sxs
8-3/4"	7"	23	8895'	800 Sxs
6.366"	4-1/2"	Unknown	3500'-8500'	475 Sxs - Liner set inside of 7" Casing

This well was formerly HNG's Elliott 31 Federal, Well No. 3 which was purchased by Texaco Producing Inc. and re-named West Dollarhide Drinkard Unit, Well No. 91. Previous TD was 10,275'. Well has been plugged and abandoned with the following cement plugs: 50 sxs @ 9809'-9994', 60 sxs @ 9000'-9162', sqzd Fusselman perfs @ 8507'-8714' w/retainer @ 8020' with 200 sxs, 23' cmt on top of retainer @ 8020', Devonian perfs @ 7520'-7530' and top of liner squeezed with retainer @ 3400' with 325 sxs, 35' cement of top of retainer @ 3400', 25 sxs @ 2582'-2682', 25 sxs @ 523'-623' and 10 sxs @ 0'-50'. Well will be re-entered and completed as follows:

- 1.) Remove Dry Hole Marker.
- 2.) Move in and rig up pulling unit and BOP.
- 3.) Drill out cement plugs to 6800'.
- 4.) Run casing inspection log and cement bond log.

(Continued on attached sheet)

IN ABOVE SPACE DESCRIBE PROPOSED PROGRAM: If proposal is to deepen or plug back, give data on present productive zone and proposed new productive zone. If proposal is to drill or deepen directionally, give pertinent data on subsurface locations and measured and true vertical depths. Give blowout preventer program, if any.

24.

SIGNED

W. B. Cade

W. B. Cade

TITLE District Operations Manager

DATE 12-26-85

(This space for Federal or State office use)

PERMIT NO.

APPROVAL DATE

APPROVED BY

TITLE

DATE

CONDITIONS OF APPROVAL, IF ANY:

APPROVAL SUBJECT TO  
GENERAL REQUIREMENTS AND  
SPECIAL STIPULATIONS

\*See Instructions On Reverse Side

RECEIVED

MAR 19 1986

O.C.D.  
HOBBS OFFICE

West Dollarhide Drinkard Unit Well No. 91  
Lea County, New Mexico

Re-entered and completed as follows:  
(Continued from Form 9-331C

- 5.) Run GR-CNL log and perforate Drinkard Pay with 2 SPF at approximately 6300'-6600'.
- 6.) Acidize Drinkard with 8,000 gallons 15% NEFE HCL and Ball Sealers through tubing and packer.
- 7.) Run production tubing, pump and rods and place on production and test.

## OIL CONSERVATION DIVISION

STATE OF NEW MEXICO  
ENERGY AND MINERALS DEPARTMENTP. O. BOX 2088  
SANTA FE, NEW MEXICO 87501Form C-102  
Revised 10-1-78

All distances must be from the outer boundaries of the Section.

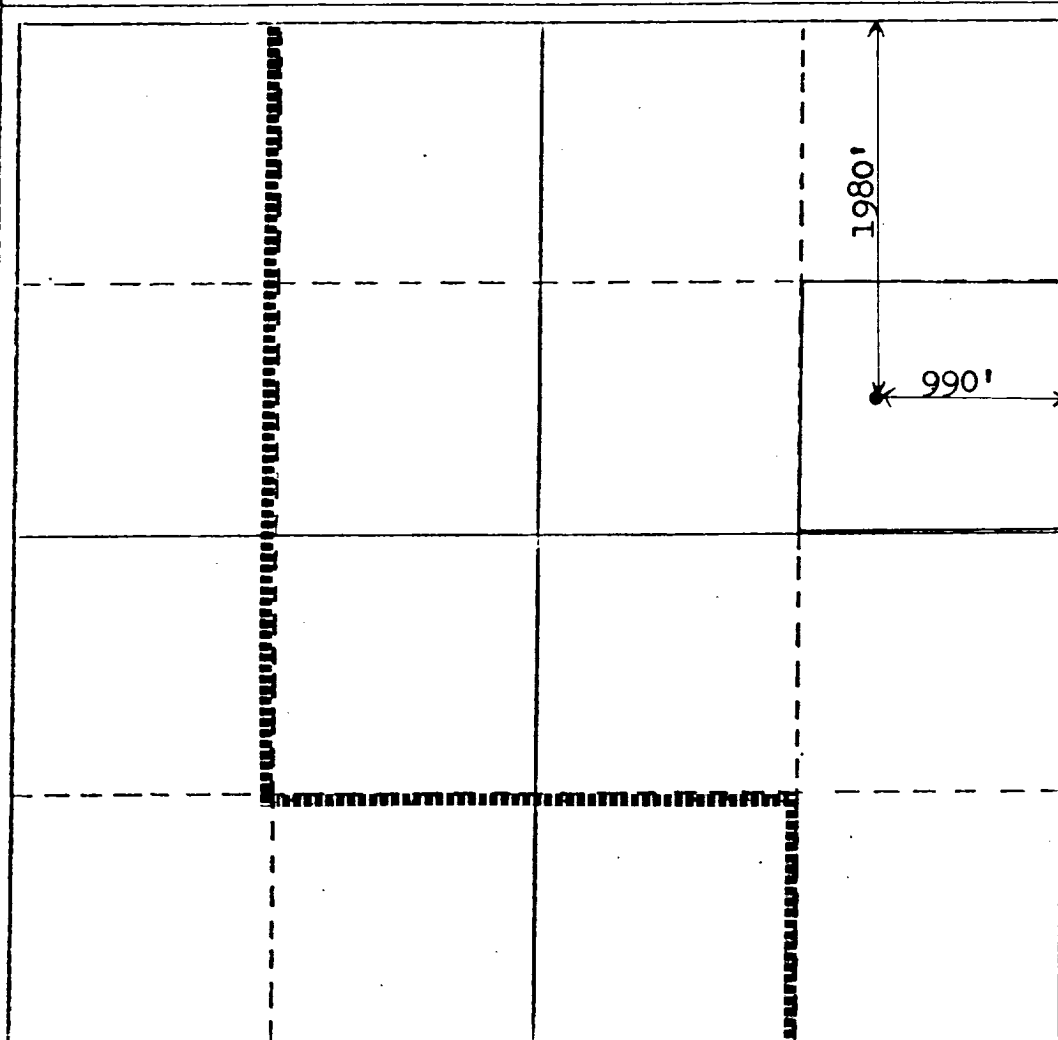
Operator <b>Texaco Producing Inc.</b>			Lease <b>West Dollarhide Drinkard Unit</b>		Well No. <b>91</b>
Unit Letter <b>H</b>	Section <b>31</b>	Township <b>24S</b>	Range <b>38E</b>	County <b>Lea</b>	
Actual Footage Location of Well: 1980 feet from the North line and 990 feet from the East line					
Ground Level Elev. <b>3146' D.F.</b>	Producing Formation <b>Drinkard</b>		Pool <b>Dollarhide Tubb Drinkard</b>		Dedicated Acreage: <b>40</b> Acres

1. Outline the acreage dedicated to the subject well by colored pencil or hatchure marks on the plat below.
2. If more than one lease is dedicated to the well, outline each and identify the ownership thereof (both as to working interest and royalty).
3. If more than one lease of different ownership is dedicated to the well, have the interests of all owners been consolidated by communitization, unitization, force-pooling, etc?

☐ Yes ☐ No If answer is "yes," type of consolidation \_\_\_\_\_

If answer is "no," list the owners and tract descriptions which have actually been consolidated. (Use reverse side of this form if necessary.) \_\_\_\_\_

No allowable will be assigned to the well until all interests have been consolidated (by communitization, unitization, forced-pooling, or otherwise) or until a non-standard unit, eliminating such interests, has been approved by the Division.



## CERTIFICATION

I hereby certify that the information contained herein is true and complete to the best of my knowledge and belief.

W. B. Cade

Name

W. B. Cade

Position

District Operations Manager

Company

Texaco Producing Inc.

Date

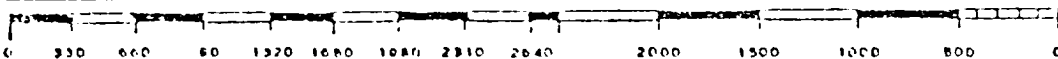
December 26, 1985

I hereby certify that the well location shown on this plot was plotted from field notes of actual surveys made by me or under my supervision, and that the same is true and correct to the best of my knowledge and belief.

Date Surveyed

 Registered Professional Engineer  
and/or Land Surveyor

Certificate No.



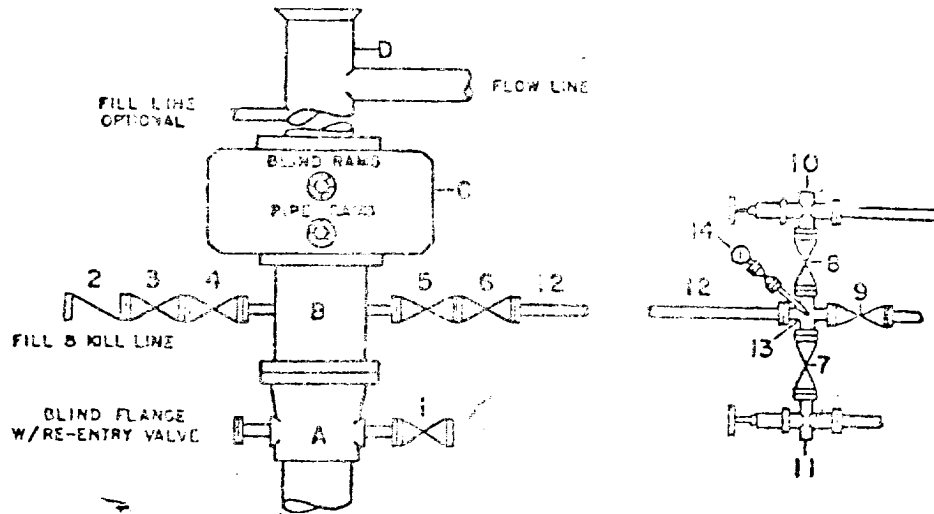
RECEIVED

MAR 19 1986

U.S. DEPT. OF JUSTICE  
FEDERAL BUREAU OF INVESTIGATION

# DRILLING CONTROL CONDITION II-3000 PSI WP

ALL TUBING REQUIRED  
SEE \_\_\_\_\_



## DRILLING CONTROL

### MATERIAL LIST - CONDITION II

- A Texaco Wellhead
- B 3000# W.P. drilling spool with a 1" minimum flanged outlet for kill-line and 2" minimum flanged outlet for choke line
- C 3000# W.P. Dual ram type preventer, dual ram operated with 1" steel, 3000# W.P. control lines where sub-structure height is adequate, 2-3000# W.P. single ram type preventers may be utilized.
- D Ball nipple with flowline and fill-up outlets. (Kill line may also be used for fill-up line.)
- 1, 2, 4, 7, 8 2" minimum 3000# W.P. flanged full opening steel gate valve, or Halliburton Lo Torc Plug valve
- 3 2" minimum 3000# W.P. back pressure valve
- 5, 6, 9 3" minimum 3000# W.P. flanged full opening steel gate valve, or Halliburton Lo Torc Plug valve
- 12 3" minimum schedule 80, Grade 100, stainless line pipe
- 13 2" minimum x 3" minimum 3000# W.P. flanged cross
- 10, 11 2" minimum 3000# W.P. adjustable choke bodies
- 14 Cameron Mud Gauge or equivalent (flow line optional in choke line.)



TEXACO, INC.  
W. L. AND D. V. B. ON  
W. L. AND TEXAS



SCALE	DATE	EST. NO.	ORD. NO.
DRAWN BY			
CHECKED BY			
APPROVED BY			

EXHIBIT B