

NEW MEXICO OIL CONSERVATION COMMISSION  
WELL LOCATION AND ACREAGE DEDICATION PLAT

Form No. 102  
Supersedes C-128  
Effective 1-1-65

All distances must be from the outer boundaries of the Section.

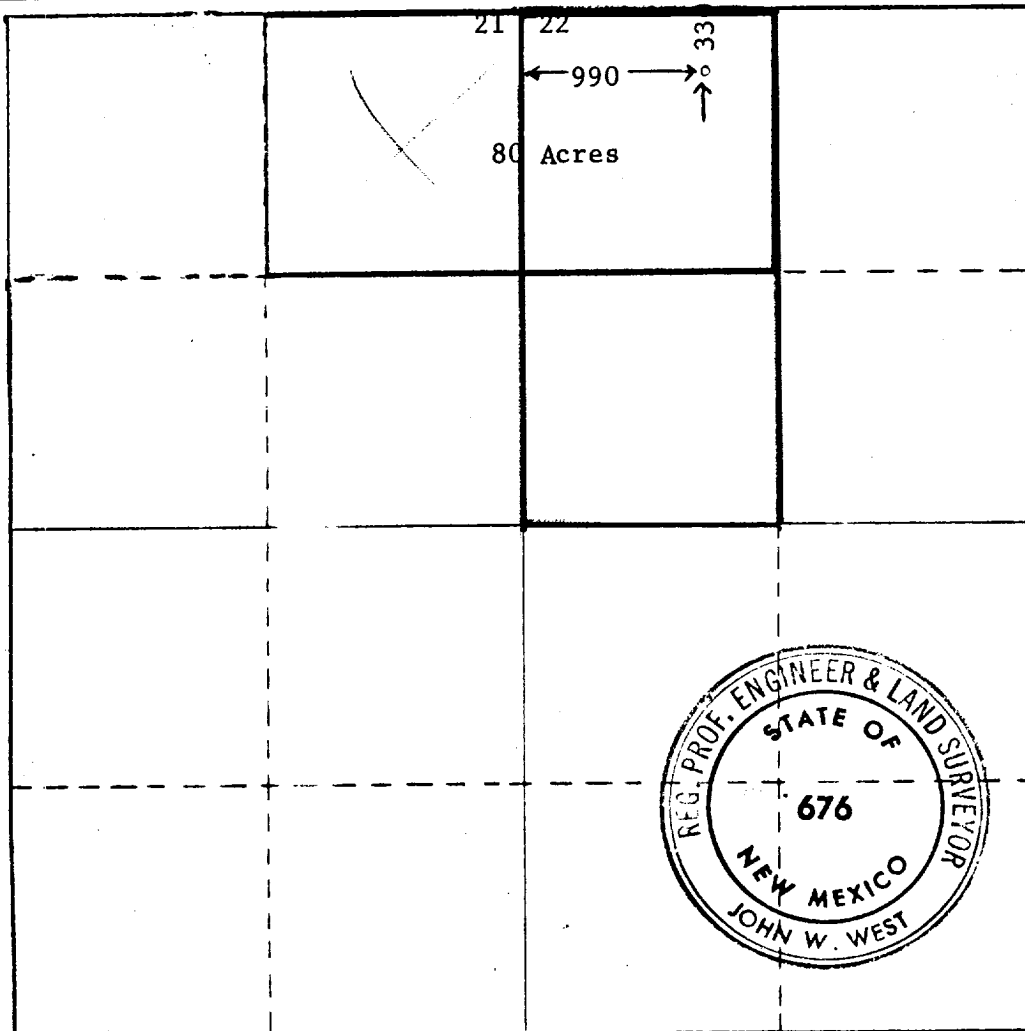
Operator <b>MCCULLOCH OIL CORP.</b>			Lease <b>ARCO JAMISON</b>		Well No. <b>1Y</b>
Unit Letter <b>D</b>	Section <b>22</b>	Township <b>24 SOUTH</b>	Range <b>37 EAST</b>	County <b>LEA</b>	
Actual Footage Location of Well: <b>330</b> feet from the <b>NORTH</b> line and <b>990</b> feet from the <b>WEST</b> line of Sec 22					
Ground Level Elev. <b>3264.8</b>	Producing Formation <b>DRINKARD</b>	Pool <b>FOWLER DRINKARD</b>		Dedicated Acreage: <b>80</b> Acres	

- Outline the acreage dedicated to the subject well by colored pencil or hachure marks on the plat below.
- If more than one lease is dedicated to the well, outline each and identify the ownership thereof (both as to working interest and royalty).
- If more than one lease of different ownership is dedicated to the well, have the interests of all owners been consolidated by communitization, unitization, force-pooling, etc?

☐ Yes ☐ No If answer is "yes," type of consolidation \_\_\_\_\_

If answer is "no," list the owners and tract descriptions which have actually been consolidated. (Use reverse side of this form if necessary.) \_\_\_\_\_

No allowable will be assigned to the well until all interests have been consolidated (by communitization, unitization, forced-pooling, or otherwise) or until a non-standard unit, eliminating such interests, has been approved by the Commission.



CERTIFICATION

I hereby certify that the information contained herein is true and complete to the best of my knowledge and belief.

Name John W. West  
Position  
**AGENT**  
Company  
**MCCULLOCH OIL CORP.**  
Date  
**3-1-1972**

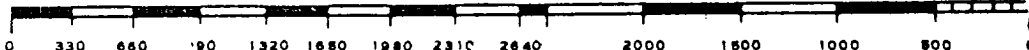
I hereby certify that the well location shown on this plat was plotted from field notes of actual surveys made by me or under my supervision, and that the same is true and correct to the best of my knowledge and belief.

Date Surveyed  
**2-29-1972**

Registered Professional Engineer  
and/or Land Surveyor

John W. West  
Certificate No.

**676**



RECEIVED

JUN 1 1972

OIL CONSERVATION COMM.  
HOBBS, G. M.

COUNTY LEA FIELD LOW STATE NM 30-025-24053

OPR MC CULLOUGH OIL CORP. MAP  
1x Arapahoe  
Sac 22, 24-S, R-37- CO-ORD  
330' ENL, 990' FWL of Sac  
Spd 3-2-72 CLASS EL 32775  
Emp 3-31-72

CSG & SX - TUBING	FORMATION		FORMATION	
	DATUM		DATUM	
8 5/8" at 1080' w/500' sx				
5 1/2" at 6500' w/450' sx				
LOGS EL GR RA IND RC A				

ID 6507', FBD 6444'

IP (Upper Yarb) Perf @ 5503-5822' E 166 BOPD + 200 BW. Pot based on 24 hr test. COR 1100, Grav NR

Distribution limited and publication prohibited by subscribers' agreement.  
 Reproduction rights reserved by Williams & Lee Scouting Service, Inc.

CONT. Capitan PROP DEPTH 6500' TYPE RT  
 DATE

E.R. 3-6-72, Opr's Elev. 3265' GL  
 PD 6500' RE (Drinkard)  
 Contractor - Capitan  
 (Replacement well for #1, Junked & Abandoned)  
 8-19-72 AMEND LEASE NAME - Formerly reported as Jamison  
 3-7-72 Drlg. 2942' anhy & sh  
 3-14-72 Drlg. 5516' dolo & sh  
 3-20-72 Drlg. 6185' lm  
 3-28-72 ID 6507'; FBD 6444'; Frac Swb  
 Perf @ 5503-5822' w/26 shots (overall)  
 Acid (5503-5822') 4500 gals (15% N2)  
 4-3-72 ID 6507'; FBD 6444'; WO Emp  
 Frac (5503-5822') 40,000 gals wtr + 60,000# sd  
 4-10-72 ID 6507'; FBD 6444'; WO Pot  
 4-17-72 ID 6507'; FBD 6444'; SI Storage.  
 4-24-72 ID 6507'; FBD 6444'; SI

LEA  
MC PHILLO - OHL - RFL.

Fowl-r  
Dx Ardo-Jamison

NM Sec 22, T24S, R37E  
Page #2

5-1-72 ID 65071; FBD 64441; Estg  
5-8-72 ID 65071; FBD 64441; Estg  
5-15-72 ID 65071; FBD 64441; IO Pmp  
Fpd 60-70 Bo + 22-30 BW in 24 hrs  
5-23-72 ID 65071; FBD 64441; IO Pmp  
5-30-72 ID 65071; FBD 64441; IO Pmp  
Ppd 60-60 Bo + 20 BW in 24 hrs (5503-5822)  
6-6-72 ID 65071; FBD 64441; Estg  
6-12-72 ID 65071; FBD 64441; Estg  
7-25-72 ID 65071; FBD 64441; Estg  
8-1-72 ID 65071; FBD 64441; Estg  
8-8-72 ID 65071; FBD 64441; WO Pot  
8-14-72 ID 65071; FBD 64441; COMPLETE  
ID 65071; Clonita 49361; Blinbry 53921

8-14-72 Continued  
Tubb 59671; Drinkard 61401  
8-19-72 COMPLETION REPORTED