

UNITED STATES
DEPARTMENT OF THE INTERIOR
GEOLOGICAL SURVEY

APPLICATION FOR PERMIT TO DRILL, DEEPEN, OR PLUG BACK

1a. TYPE OF WORK

DRILL ☒

DEEPEN ☐

PLUG BACK ☐

b. TYPE OF WELL

OIL
WELL ☒

GAS
WELL ☐

OTHER

SINGLE
ZONE ☒

MULTIPLE
ZONE ☐

2. NAME OF OPERATOR

GETTY OIL COMPANY

3. ADDRESS OF OPERATOR

P. O. BOX 249, HOBBS, NEW MEXICO 88240

4. LOCATION OF WELL (Report location clearly and in accordance with any State requirements.)*

At surface

1630' F&L AND 330' FEL, SECTION 24

At proposed prod. zone

14. DISTANCE IN MILES AND DIRECTION FROM NEAREST TOWN OR POST OFFICE*

4 MILES EAST OF JAL, NEW MEXICO

15. DISTANCE FROM PROPOSED*

LOCATION TO NEAREST
PROPERTY OR LEASE LINE, FT.
(Also to nearest drlg. unit line, if any)

16. NO. OF ACRES IN LEASE

800

17. NO. OF ACRES ASSIGNED
TO THIS WELL

40

18. DISTANCE FROM PROPOSED LOCATION*

TO NEAREST WELL, DRILLING, COMPLETED,
OR APPLIED FOR, ON THIS LEASE, FT.

330

19. PROPOSED DEPTH

8300

20. ROTARY OR CABLE TOOLS

ROTARY

21. ELEVATIONS (Show whether DF, RT, GR, etc.)

22. APPROX. DATE WORK WILL START*

8-1-72

23.

PROPOSED CASING AND CEMENTING PROGRAM

SIZE OF HOLE	SIZE OF CASING	WEIGHT PER FOOT	SETTING DEPTH	QUANTITY OF CEMENT
17-1/4	13-3/8	48	540	580 lbs.
11	8-5/8	24 & 32	3450	875 lbs*
7-7/8	5-1/2	14, 15.5, 17	3300	1050 lbs*

*Actual Volumes to be determined by Caliper Survey.

It is proposed to drill 17-1/2" hole to approximately 540'; set 13-3/8" casing at 540'; and cement back to surface. Drill 11" hole to approximately 3450'; set 8-5/8" casing at 3450'; run fluid caliper survey; cement in 2 stages with DV tool set at 850'. Cement back to surface. Drill 7-7/8" hole to approximately 8300'; run mechanical caliper survey; run 5-1/2" casing to approximately 8300'; cement in 2 stages utilizing a DV two stage collar at 7300'. Top of cement behind 5-1/2" to be at 3500'.

One DST of Paddock and three DST's of Ellenburger formation are tentatively proposed.

Electrical Log Program: BHC Sonic-Gamma Ray Log, Dual Induction Laterolog and Microlog from intermediate casing to total depth with Gamma Ray Log to surface.

IN ABOVE SPACE DESCRIBE PROPOSED PROGRAM: If proposal is to deepen or plug back, give data on present productive zone and proposed new productive zone. If proposal is to drill or deepen directionally, give pertinent data on subsurface locations and measured and true vertical depths. Give blowout preventer program, if any.

24. ORIGINAL SIGNED BY:

C. L. Wade

AREA SUPERINTENDENT

JULY 24, 1972

SIGNED C. L. Wade

TITLE

DATE

(This space for Federal or State office use)

PERMIT NO.

APPROVAL DATE

APPROVED BY

TITLE

CONDITIONS OF APPROVAL, IF ANY:

Instructions

General: This form is designed for submitting proposals to perform certain well operations, as indicated, on all types of lands and leases for appropriate action by either a Federal or a State agency, or both, pursuant to applicable Federal and/or State laws and regulations. Any necessary special instructions concerning the use of this form and the number of copies to be submitted, particularly with regard to local, area, or regional procedures and practices, either are shown below or will be issued by, or may be obtained from, the local Federal and/or State office.

Item 1: If the proposal is to redrill to the same reservoir at a different subsurface location or to a new reservoir, use this form with appropriate notations. Consult applicable State or Federal regulations concerning subsequent work proposals or reports on the well.

Item 4: If there are no applicable State requirements, locations on Federal or Indian land should be described in accordance with Federal requirements. Consult local State or Federal office for specific instructions.

Item 14: Needed only when location of well cannot readily be found by road from the land or lease description. A plat, or plats, separate or on this reverse side, showing the roads to, and the surveyed location of, the well, and any other required information, should be furnished when required by Federal or State agency offices.

Items 15 and 18: If well is to be, or has been directionally drilled, give distances for subsurface location of hole in any present or objective production zone.

Item 22: Consult applicable Federal or State regulations, or appropriate officials, concerning approval of the proposal before operations are started.

**NEW MEXICO OIL CONSERVATION COMMISSION
WELL LOCATION AND ACREAGE DEDICATION PLAT**

Form C-102
Supersedes C-128
Effective 1-1-65

All distances must be from the outer boundaries of the Section.

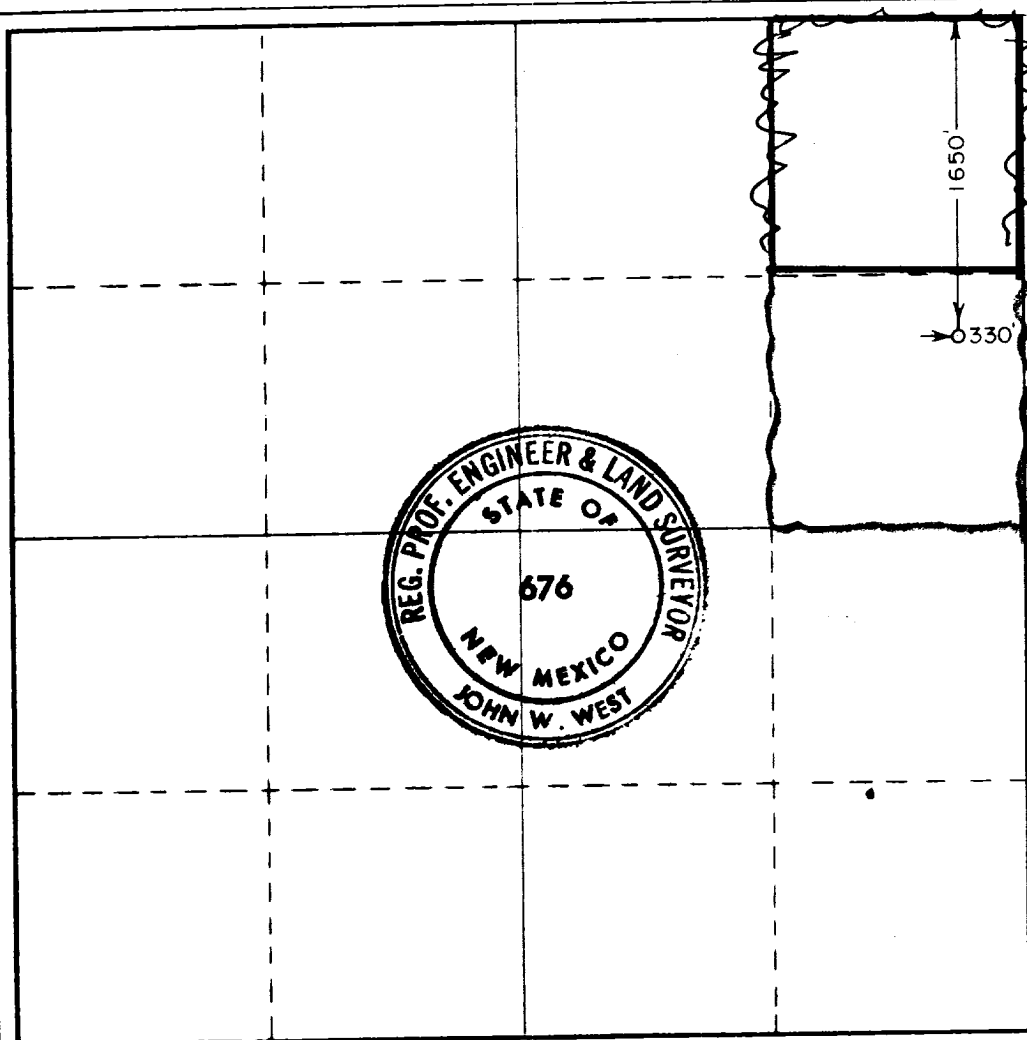
Operator GETTY OIL COMPANY			Lease A.B. COATES "C"		Well No. 29
Unit Letter H	Section 24	Township 25 SOUTH	Range 37 EAST	County LEA	
Actual Footage Location of Well: 1650 feet from the NORTH line and 330 feet from the EAST line					
Ground Level Elev. 3068.3	Producing Formation ELLENBURGER		Pool JUSTIS	Dedicated Acreage: 40 Acres	

1. Outline the acreage dedicated to the subject well by colored pencil or hatchure marks on the plat below.
2. If more than one lease is dedicated to the well, outline each and identify the ownership thereof (both as to working interest and royalty).
3. If more than one lease of different ownership is dedicated to the well, have the interests of all owners been consolidated by communitization, unitization, force-pooling, etc?

☐ Yes ☐ No If answer is "yes," type of consolidation _____

If answer is "no," list the owners and tract descriptions which have actually been consolidated. (Use reverse side of this form if necessary.) _____

No allowable will be assigned to the well until all interests have been consolidated (by communitization, unitization, forced-pooling, or otherwise) or until a non-standard unit, eliminating such interests, has been approved by the Commission.



CERTIFICATION

I hereby certify that the information contained herein is true and complete to the best of my knowledge and belief.

ORIGINAL SIGNED BY:
C. L. Wade

Name
C. L. WADE

Position
AREA SUPERINTENDENT

Company
GETTY OIL COMPANY

Date
JULY 26, 1972

I hereby certify that the well location shown on this plat was plotted from field notes of actual surveys made by me or under my supervision, and that the same is true and correct to the best of my knowledge and belief.

Date Surveyed

JULY 24, 1972

Registered Professional Engineer
and/or Land Surveyor

John W. West
Certificate No. **676**

