

Submit to Appropriate  
District Office  
State Lease - 4 copies  
Fee Lease - 3 copies

State of New Mexico  
Energy, Minerals, and Natural Resources Department

Form C-102  
Revised 1-1-89

**OIL CONSERVATION DIVISION**

P.O. Box 2088

Santa Fe, New Mexico 87504-2088

**DISTRICT I**  
P.O. Box 1980, Hobbs, NM 88240

**DISTRICT II**  
P.O. Drawer DD, Artesia, NM 88210

**DISTRICT III**  
1000 Rio Brazos Rd., Aztec, NM 87410

**WELL LOCATION AND ACREAGE DEDICATION PLAT**

All Distances must be from the outer boundaries of the section

Operator <b>ARCO Oil and Gas Company</b>			Lease <b>W.H. HARRISON D WN COM</b>		Well No. <b>6</b>
Unit Letter <b>N</b>	Section <b>29</b>	Township <b>24S</b>	Range <b>37E</b>	County <b>NMPM LEA</b>	
Actual Footage Location of Well: <b>660</b> feet from the <b>SOUTH</b> line and <b>1980</b> feet from the <b>WEST</b> line					
Ground level Elev. <b>3261</b>		Producing Formation <b>YATES SEVEN RIVERS</b>		Pool <b>JALMAT GAS</b>	Dedicated Acreage: <b>320</b> Acres

1. Outline the acreage dedicated to the subject well by colored pencil or hachure on the plat below.
2. If more than one lease is dedicated to the well, outline each and identify the ownership thereof (both as to working interest and royalty).
3. If more than one lease of different ownership is dedicated to the well, have the interest of all owners been consolidated by communitization, unitization, force-pooling, etc.?

☒ Yes ☐ No If answer is "yes" type of consolidation **COMMUNITIZATION**

If answer is "no" list the owners and tract descriptions which have actually been consolidated. (Use reverse side of this form if necessary.)

No allowable will be assigned to the well until all interests have been consolidated. (by communitization, unitization, forced-pooling, or otherwise) or until a non-standard unit, eliminating such interest, has been approved by the Division.

#2			
#1		#7	
		#6	

**OPERATOR CERTIFICATION**

I hereby certify that the information contained herein is true and complete to the best of my knowledge and belief.

Signature

Printed Name

**JAMES COGBURN**

Position

**OPER. COORD.**

Company

**ARCO OIL AND GAS**

Date

**9/24/93**

**SURVEYOR CERTIFICATION**

I hereby certify that the well location shown on this plat was plotted from field notes of actual surveys made by me or under my supervision, and that the same is true and correct to the best of my knowledge and belief.

Date Surveyed

Signature & Seal of  
Professional Surveyor

Certificate No.

0

0 330 660 990 1320 1650 1980 2310 2640 2000 1500 1000 500

R 5392

RECEIVED

SEP 24 1993

OFFICE

NEW MEXICO OIL CONSERVATION COMMISSION  
WELL LOCATION AND ACREAGE DEDICATION PLAT

30-025-24667

Form C-102  
Supersedes C-128  
Effective 1-1-65

All distances must be from the outer boundaries of the Section.

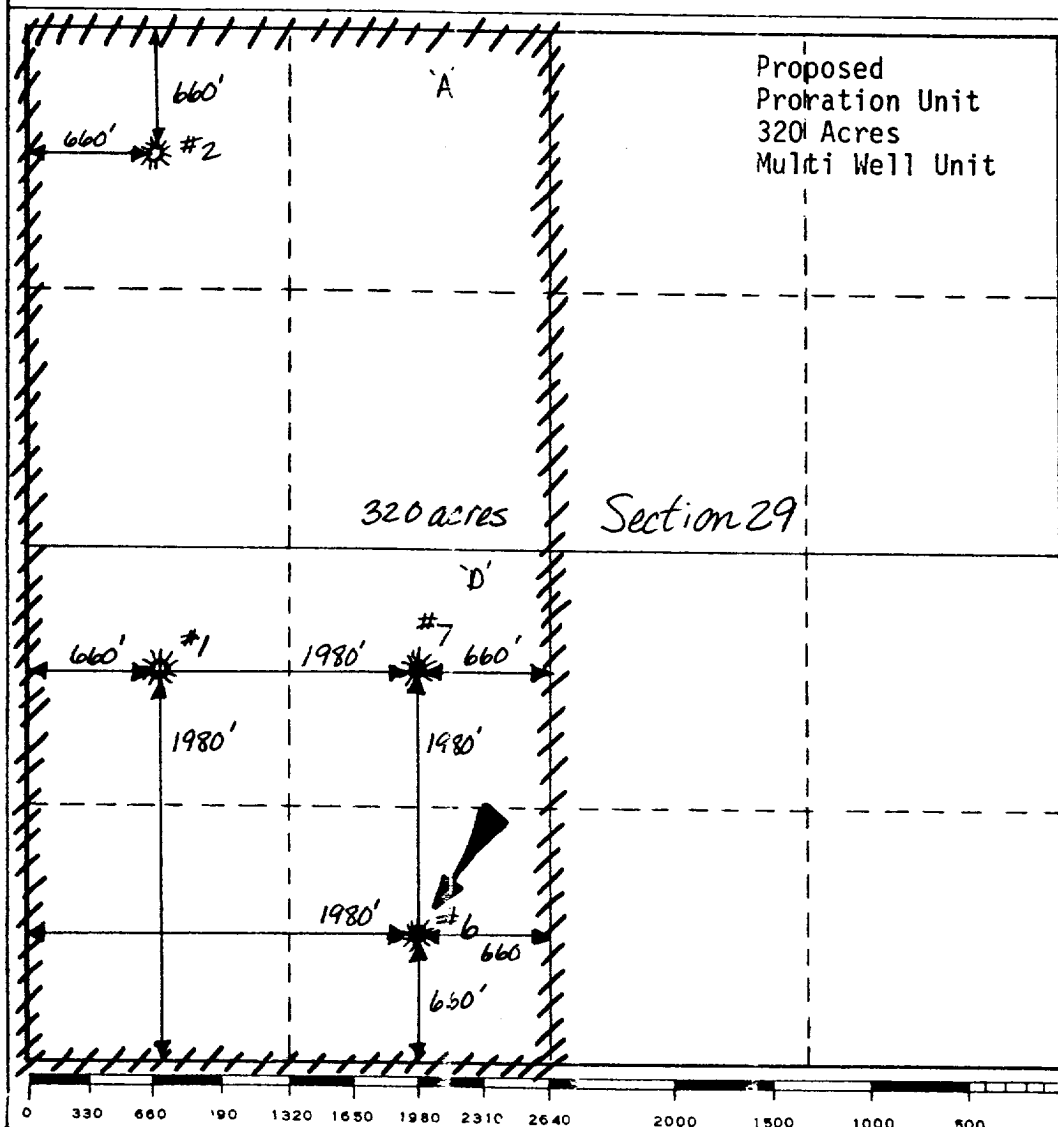
Operator <b>ARCO Oil and Gas Company</b>			Lease <b>W. H. Harrison "D"</b>		Well No. <b>6</b>
Unit Letter <b>N</b>	Section <b>29</b>	Township <b>24S</b>	Range <b>37E</b>	County <b>Lea</b>	
Actual Footage Location of Well: <b>660'</b> feet from the <b>South</b> line and <b>1980'</b> feet from the <b>West</b> line					
Ground Level Elev. <b>3261'</b>	Producing Formation <b>Yates-Seven Rivers</b>		Pool <b>Jalmat Gas</b>		Dedicated Acreage: <b>MWU 320</b> Acres

1. Outline the acreage dedicated to the subject well by colored pencil or hachure marks on the plat below.
2. If more than one lease is dedicated to the well, outline each and identify the ownership thereof (both as to working interest and royalty).
3. If more than one lease of different ownership is dedicated to the well, have the interests of all owners been consolidated by communitization, unitization, force-pooling, etc?

☒ Yes    ☐ No    If answer is "yes," type of consolidation Communitization

If answer is "no," list the owners and tract descriptions which have actually been consolidated. (Use reverse side of this form if necessary.) \_\_\_\_\_

No allowable will be assigned to the well until all interests have been consolidated (by communitization, unitization, forced-pooling, or otherwise) or until a non-standard unit, eliminating such interests, has been approved by the Commission.



**CERTIFICATION**

I hereby certify that the information contained herein is true and complete to the best of my knowledge and belief.

*Cindy W. Ellis*

Name  
**C. W. Ellis**  
Position  
**Engineer**  
Company  
**ARCO Oil and Gas Co.**

Date  
**1/28/85**

I hereby certify that the well location shown on this plat was plotted from field notes of actual surveys made by me or under my supervision, and that the same is true and correct to the best of my knowledge and belief.

Date Surveyed

Registered Professional Engineer and/or Land Surveyor

Certificate No.

## OIL CONSERVATION DIVISION

STATE OF NEW MEXICO  
ENERGY AND MINERALS DEPARTMENTP. O. BOX 2088  
SANTA FE, NEW MEXICO 87501Form O-102  
Revised 10-1-78

All distances must be from the outer boundaries of the Section.

Operator ARCO Oil and Gas Company Division of Atlantic Richfield Company			Lease W. H. Harrison "D" WN		Well No. 6
Unit Letter N	Section 29	Township 24S	Range 37E	County Lea	
Actual Footage Location of Well:					
660'		feet from the	South	line and	1980' feet from the West line
Ground Level Elev. 3261'	Producing Formation Yates Seven Rivers		Pool Jalmat Gas		Dedicated Acreage: 280 Acres

1. Outline the acreage dedicated to the subject well by colored pencil or hatchure marks on the plat below.
2. If more than one lease is dedicated to the well, outline each and identify the ownership thereof (both as to working interest and royalty).
3. If more than one lease of different ownership is dedicated to the well, have the interests of all owners been consolidated by communitization, unitization, force-pooling, etc?

☐ Yes ☐ No If answer is "yes," type of consolidation \_\_\_\_\_

If answer is "no," list the owners and tract descriptions which have actually been consolidated. (Use reverse side of this form if necessary.) \_\_\_\_\_

No allowable will be assigned to the well until all interests have been consolidated (by communitization, unitization, forced-pooling, or otherwise) or until a non-standard unit, eliminating such interests, has been approved by the Division.

## CERTIFICATION

I hereby certify that the information contained herein is true and complete to the best of my knowledge and belief.

Name

Position

Engrg. Tech. Spec.

Company ARCO Oil and Gas Co.  
Div. of Atlantic Richfield Co

Date

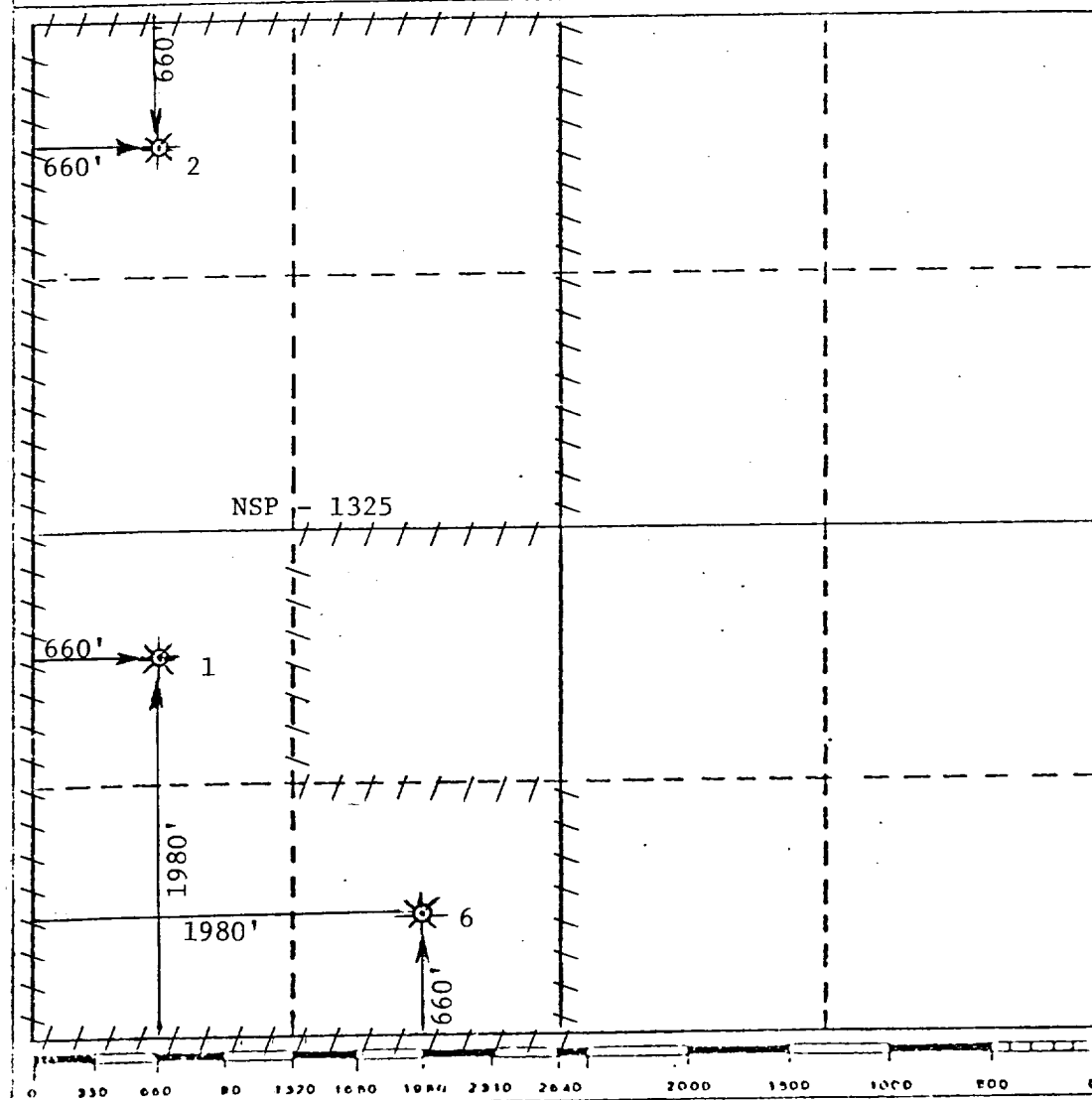
8/30/82

I hereby certify that the well location shown on this plat was plotted from field notes of actual surveys made by me or under my supervision, and that the same is true and correct to the best of my knowledge and belief.

Date Surveyed

Registered Professional Engineer  
and/or Land Surveyor

Certificate No.



NEW MEXICO OIL CONSERVATION COMMISSION  
WELL LOCATION AND ACREAGE DEDICATION PLAT

Form C-102  
Supersedes C-128  
Effective 1-1-65

All distances must be from the outer boundaries of the Section.

Operator <b>Atlantic Richfield Company</b>			Lease <b>William H. Harrison "D" WN</b>		Well No. <b>6</b>
U. S. Letter <b>N</b>	Section <b>29</b>	Township <b>24 South</b>	Range <b>37 East</b>	County <b>Lea</b>	
Actual Footage Location of Well:					
660 feet from the <b>South</b> line and		1980 feet from the <b>West</b> line			
Ground Level Elev. <b>3261'</b>	Producing Formation <b>Yates &amp; Seven Rivers</b>	Pool <b>Jalmat Gas</b>		Dedicated Acreage: <b>320</b> Acres	

1. Outline the acreage dedicated to the subject well by colored pencil or hachure marks on the plat below.

2. If more than one lease is dedicated to the well, outline each and identify the ownership thereof (both as to working interest and royalty).

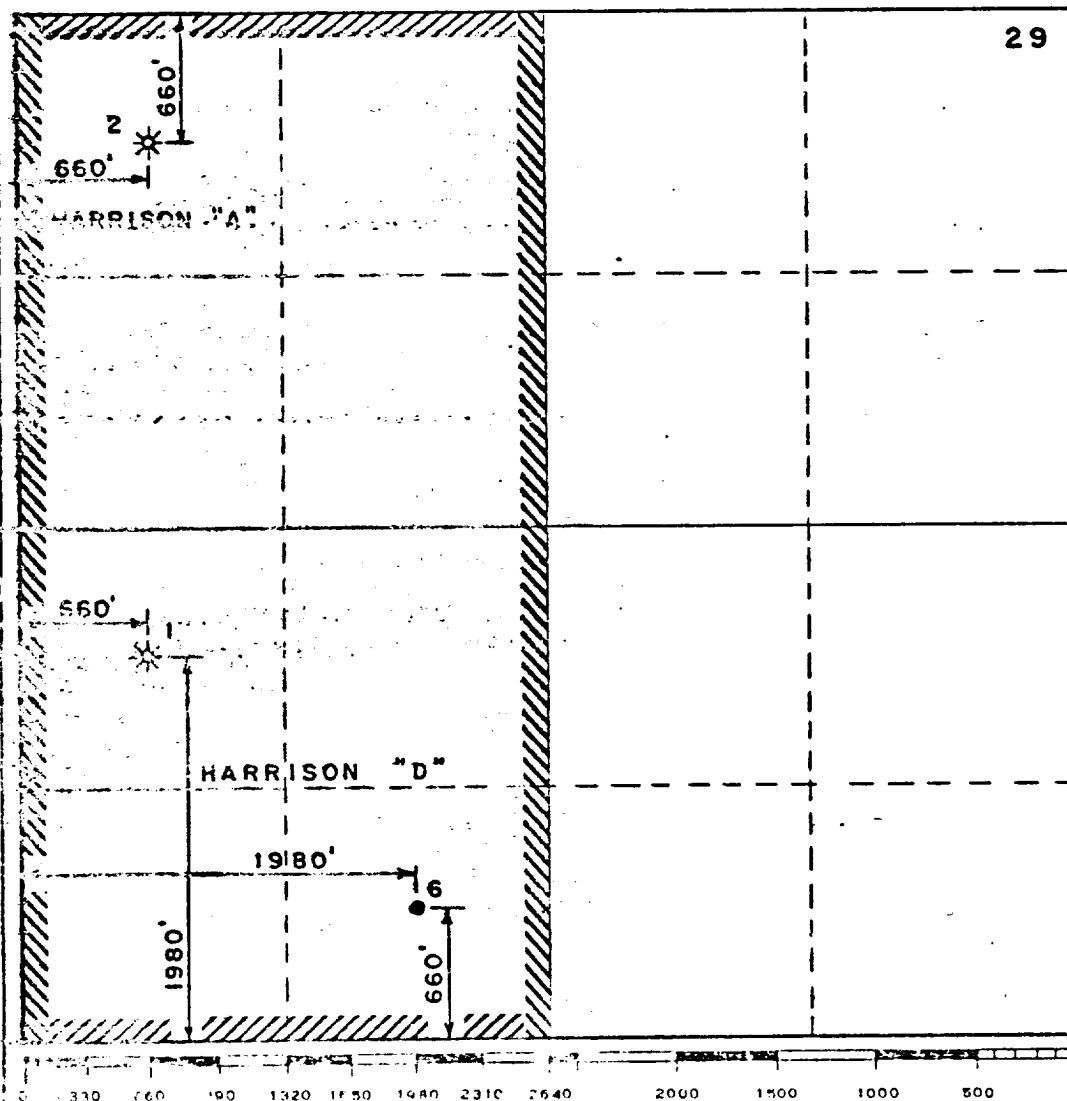
3. If more than one lease of different ownership is dedicated to the well, have the interests of all owners been consolidated by communitization, unitization, force-pooling, etc?

☒ Yes ☐ No If answer is "yes," type of consolidation Communitization

If answer is "no," list the owners and tract descriptions which have actually been consolidated. (Use reverse side of this form if necessary.)

No allowable will be assigned to the well until all interests have been consolidated (by communitization, unitization, forced-pooling, or otherwise) or until a non-standard unit, eliminating such interests, has been approved by the Commission.

R 37 E



CERTIFICATION

I hereby certify that the information contained herein is true and complete to the best of my knowledge and belief.

*Cris G. Rhodes*

Name

**Cris G. Rhodes**

Position

**Operations Engineer**

Company

**Atlantic Richfield Co.**

Date

**January 26, 1977**

I hereby certify that the well location shown on this plat was plotted from field notes of actual surveys made by me or under my supervision, and that the same is true and correct to the best of my knowledge and belief.

Date Surveyed

Registered Professional Engineer and/or Land Surveyor

Certificate No.

IP (Seven Rivers-Queen) Perfs 3428-3518' P 9 BOPD +  
4 BW. Pot based on 24 hrs test. GOR 66,667, Grav 38.1.

F.R. 2-18-74  
(Seven Rivers-Queen)  
4-15-74 Drlg 2306'  
4-19-74 Drlg 3203'  
4-24-74 TD 3656'; SI  
4-29-74 TD 3656'; PB 3640'; RU Pmp  
Perf 3428-3518' w/18 shots (overall)  
Acid (3428-3518') 1250 gals (15% HCL)  
Swbd dry (3428-3518')  
Frac (3428-3518') 22,000 gals gel brine  
+ 23,500# sd  
Swbd 18 BO + 18 BLW in 9 hrs (3428-3518')  
5-6-74 TD 3656'; PB 3640'; Prep TO Pmp  
5-13-74 TD 3656'; PB 3640'; TO Pmp  
Ppd 12 BO + 4 BW in 24 hrs (3428-3518')

LEA

ATLANTIC RICHFIELD CO.

Langlie Mattix

6 Harrison, Wm. H. "D" WN

Sec 29, T24S, R37E

NM

Page #2

5-20-74 TD 3656'; PB 3640'; TO Pmp  
Ppd 8 BO + 4 BW in 24 hrs (3428-3518')  
5-28-74 TD 3656'; PB 3640'; WO Pot  
5-28-74 TD 3656'; PB 3640'; COMPLETE  
6-1-74 COMPLETION REPORTED