

Exxon Les. No. _____

NEW MEXICO OIL CONSERVATION COMMISSION

Form C-102
Supersedes C-123
Effective 1-1-65

State Les. No. _____

WELL LOCATION AND ACREAGE DEDICATION PLAT

Federal Les. No. NM 0559805

All distances must be from the outer boundaries of the Section.

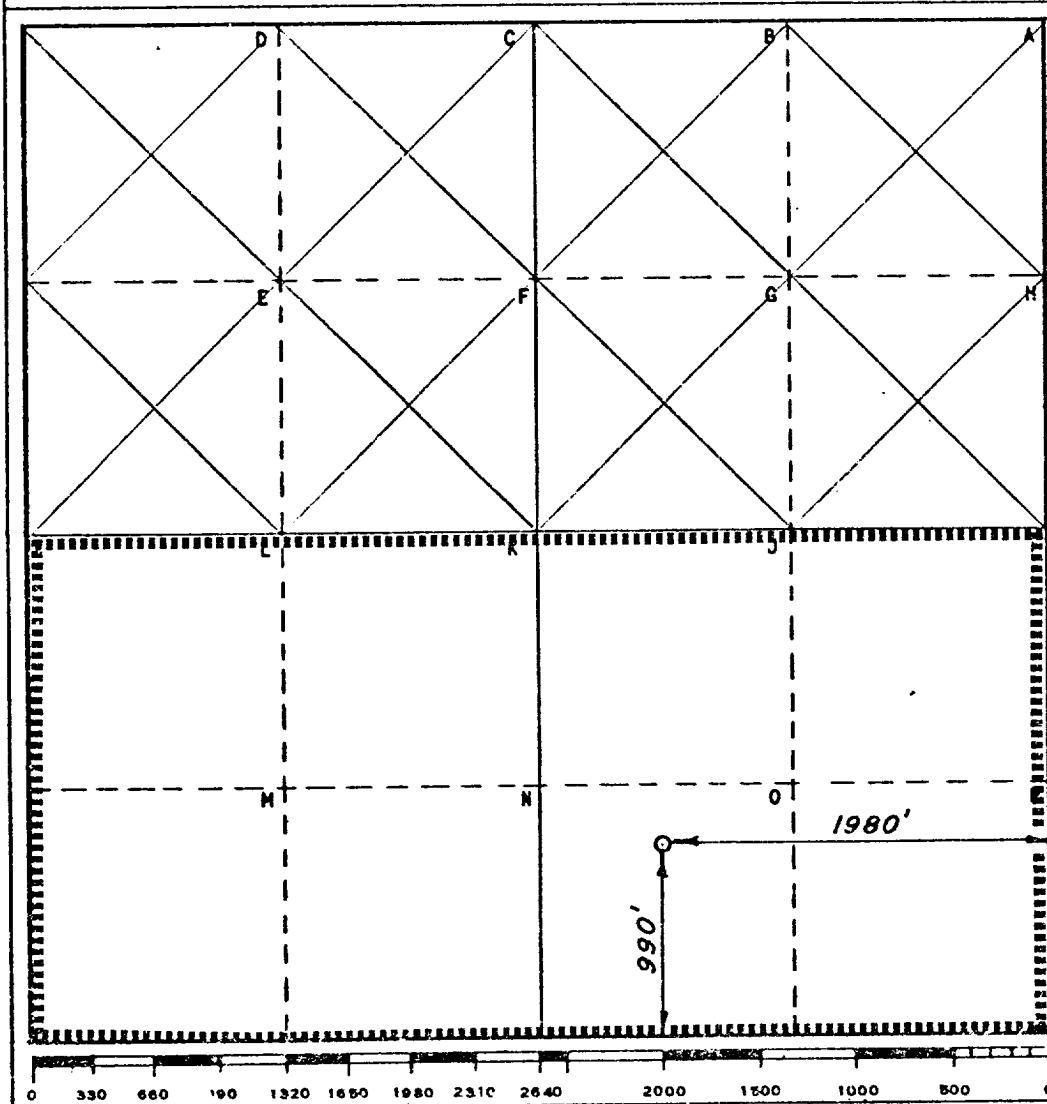
Operator Exxon Corporation		Lease FAIRVIEW MILLS - FEDERAL		Well No. 1
Unit Letter "O"	Section 14	Township T25 S	Range R 34 E	County LEA
Actual Footage Location of Well: 990 feet from the SOUTH line and 1980 feet from the EAST line				
Ground Level Elev. LATER	Producing Formation SILURIAN WILDCAT		Pool WILDCAT	Dedicated Acreage: 320 Acres

1. Outline the acreage dedicated to the subject well by colored pencil or hachure marks on the plat below.
2. If more than one lease is dedicated to the well, outline each and identify the ownership thereof (both as to working interest and royalty).
3. If more than one lease of different ownership is dedicated to the well, have the interests of all owners been consolidated by communitization, unitization, force-pooling, etc?

☐ Yes ☐ No If answer is "yes," type of consolidation _____

If answer is "no," list the owners and tract descriptions which have actually been consolidated. (Use reverse side of this form if necessary.) _____

No allowable will be assigned to the well until all interests have been consolidated (by communitization, unitization, forced-pooling, or otherwise) or until a non-standard unit, eliminating such interests, has been approved by the Commission.



CERTIFICATION

I hereby certify that the information contained herein is true and complete to the best of my knowledge and belief.

Name
Melba Knippling
Position
Proration Specialist
Company
Exxon Corporation
Box 1600 Midland, Texas
Date
2-13-74

I hereby certify that the well location shown on this plat was plotted from field notes of actual surveys made by me or under my supervision, and that the same is true and correct to the best of my knowledge and belief.

Date Surveyed
FEB. 12, 1974
Registered Professional Engineer
and/or Land Surveyor

H.S. Hester
Certificate No.
1352

14 Miles WEST of **JAL**, New Mexico

C.E. Sec. File No. **A-6808**