

DEVELOPMENT PLAN FOR SURFACE USE ON FAIRVIEW MILLS-FEDERAL
WELL NO. 1

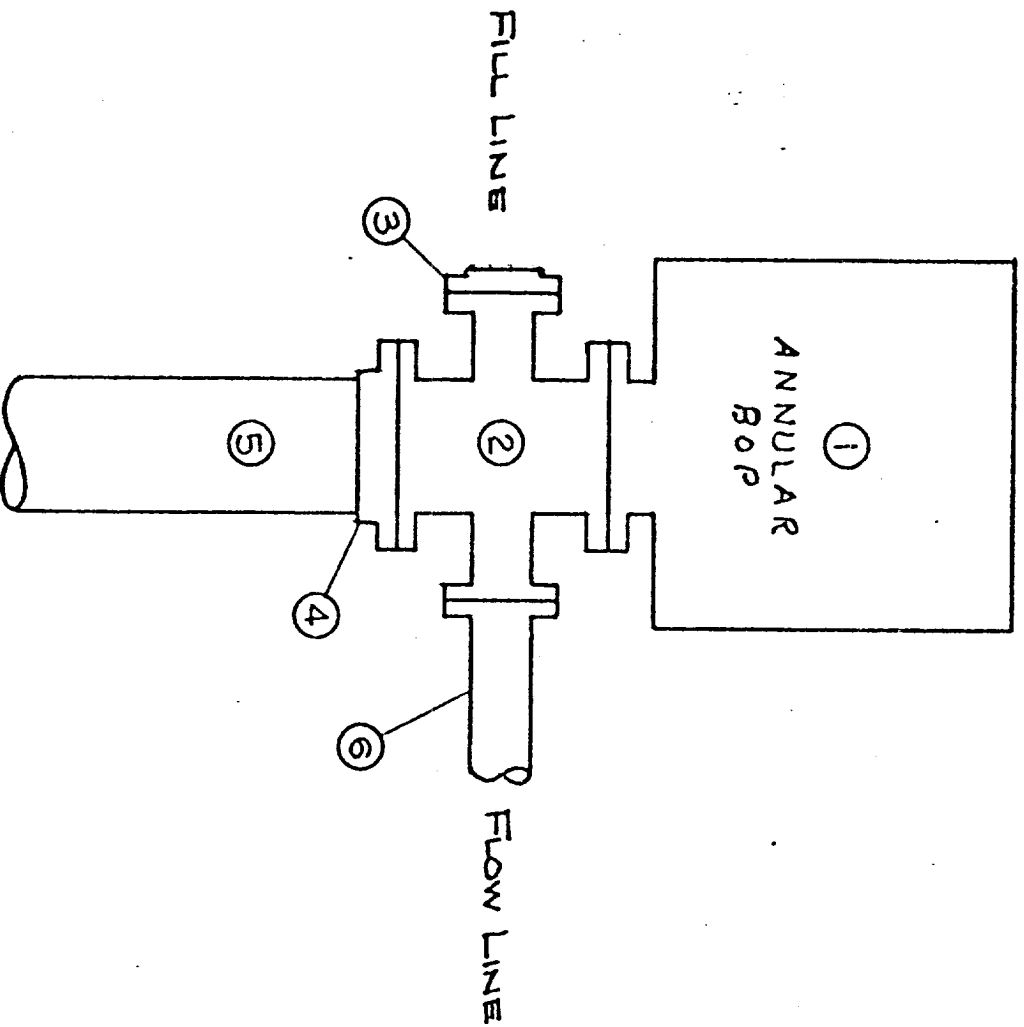
Attached is a segment of a map in Lea County, New Mexico showing the location of the proposed Wildcat well. Also attached are the following listed items as requested by the U.S.G.S.

1. Existing roads. (See area map)
2. Planned access to the location. (See area map - approx. 6,500' of 12' wide compacted road.)
3. Offsetting Pool wells. (None)
4. Lateral roads to other wells. (None)
5. Location of tank battery and flow line will be furnished at a later date.
6. A water well will be drilled on location to furnish water for drilling.
7. The drilling contractor will be required to comply with OSHA requirements. There will be a separate burn pit for trash and junk disposal.
8. No camps are involved.
9. No airstrips are involved.
10. A sketch of the location layout is attached showing the position of the rig, pipe rack and reserve pit, as well as the size of the location.
11. The location will be restored to the satisfaction of the Bureau of Land Management.
12. This area consists of level sandy land, shinnery and scrub mesquite trees. The drilling of this well will not adversely affect the environment.
13. Blowout Prevention Equipment will be 3000 psi and 5000 psi working pressure, tested according to industry standards. (See Equip. Disc. Attached.)

MIDLAND DRILLING ORGANIZATION

BLOWOUT PREVENTER SPECIFICATION

TYPE VI

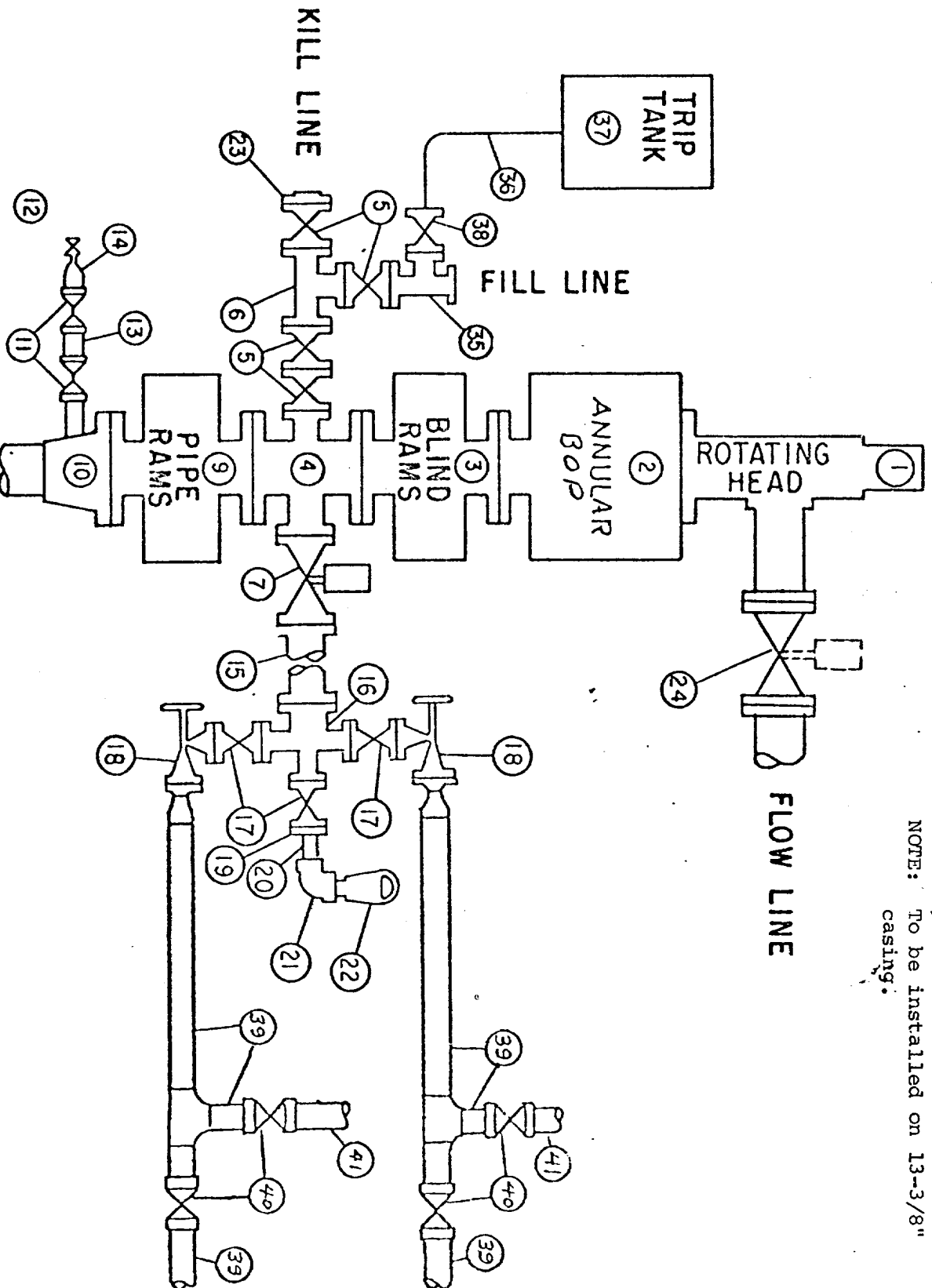


NOTE: Diverter to be installed on 20" casing.

EQUIPMENT FOR FLOW DIVERSION

1. HYDRIL OR SHAFFER
2. FLANGED SPOOL
3. THREADED FLANGE
4. SLIP-ON OR THREADED FLANGE
5. CONDUCTOR
6. FLOWLINE

MIDLAND DRILLING ORGANIZATION BLOWOUT PREVENTER SPECIFICATION TYPE II -B



I-B

BLOWOUT PREVENTER SPECIFICATION
EQUIPMENT DESCRIPTION

TYPE II-B

All equipment should be at least 3000 psi WP or higher unless otherwise specified.

1. Rotating BOP.
2. Hydril or Shaffer bag type preventer.
3. Ram type pressure operated blowout preventer with blind rams.
4. Flanged spool with one 4-inch and one 2-inch (minimum) outlet.
5. 2-inch (minimum) flanged plug or gate valve.
6. 2-inch by 2-inch by 2-inch (minimum) flanged tee.
7. 4-inch pressure operated gate valve.
8. 4-inch flanged gate or plug valve.
9. Ram type pressure operated blowout preventer with pipe rams.
10. Flanged type casing head with one side outlet (furnished by Exxon).
11. 2-inch threaded (or flanged) plug or gate valve (furnished by Exxon).
Flanged on 5000# WP, threaded on 3000# WP or less.
12. Needle valve (furnished by Exxon).
13. 2-inch nipple (furnished by Exxon).
14. Tapped bull plug (furnished by Exxon).
15. 4-inch flanged spacer spool.
16. 4-inch by 2-inch by 2-inch by 2-inch flanged cross.
17. 2-inch flanged plug or gate valve.
18. 2-inch flanged adjustable choke.
19. 2-inch threaded flange.
20. 2-inch XXH nipple.
21. 2-inch forged steel 90° Ell.
22. Cameron (or equal.) threaded pressure gage.
23. Threaded flange.
24. 6-inch manual or pressure operated gate valve.
35. 2-inch flanged tee.
36. 3-inch (minimum) hose. (Furnished by Exxon).
37. Trip tank. (Furnished by Exxon).
38. 2-inch flanged plug or gate valve.
39. 2-1/2-inch pipe, 300' to pit, anchored.
40. 2-1/2-inch SE valve.
41. 2-1/2-inch line to steel pit or separator.

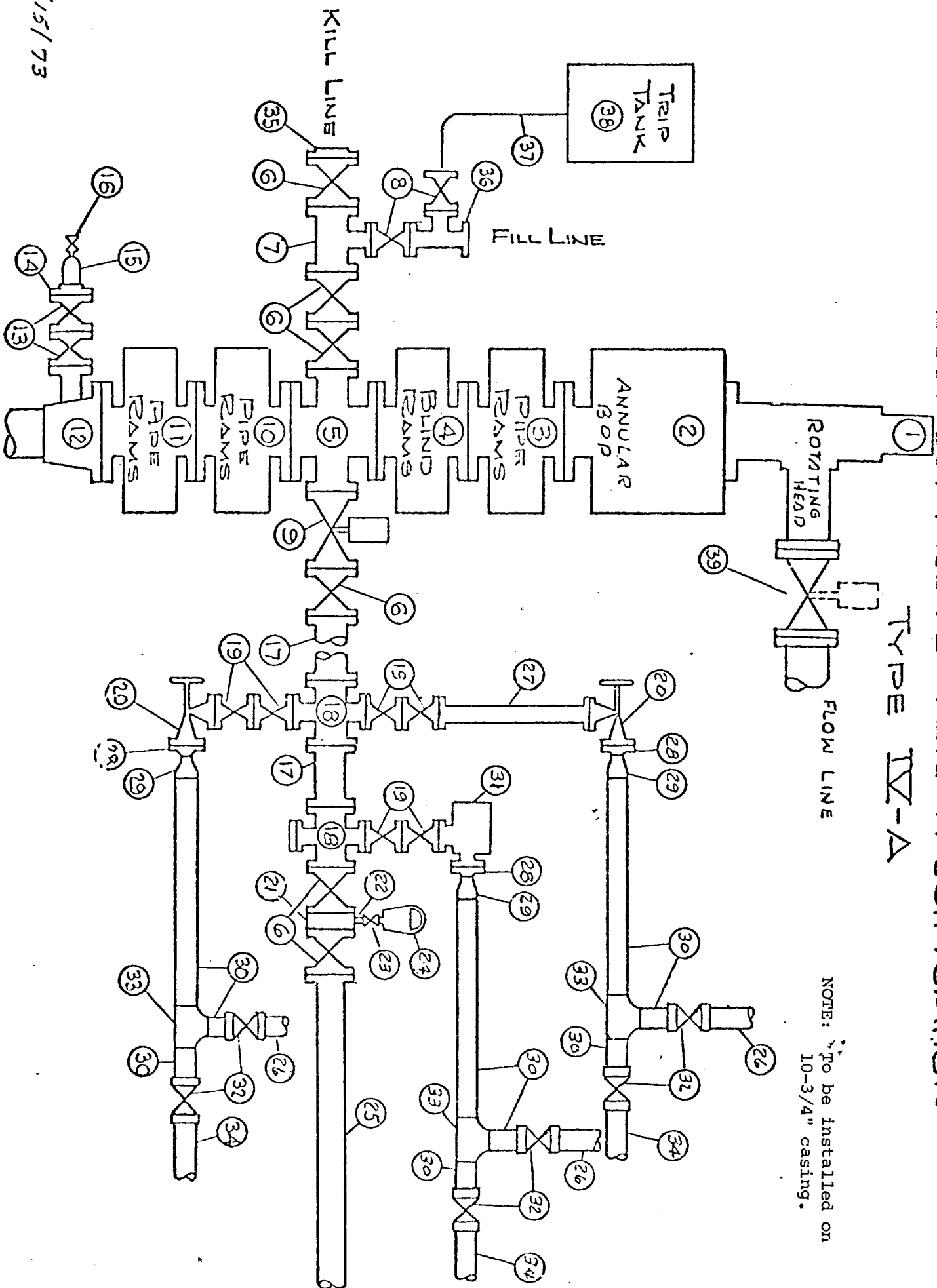
NOTES:

1. Items 3, 4 and 9 may be replaced with double ram type preventer with side outlets between the rams.
2. The two valves next to the stack on the fill and kill line to be closed unless drill string is being pulled.
3. Kill line is for emergency use only. This connection shall not be used for filling.
4. Replacement pipe rams and blind rams shall be on location at all times.
5. Only type U, LWS and QRC ram type preventers with secondary seals are acceptable for 5000 psi WP and higher BOP stacks.
6. Type E ram-type BOP's with factory modified side outlets may be used on 3000 psi and lower WP BOP stacks.

BLOWOUT PREVENTER SPECIFICATION

TYPE IV-A

NOTE: *To be installed on 10-3/4" casing.



BLOWOUT PREVENTER SPECIFICATION
EQUIPMENT DESCRIPTION

TYPE IV - A

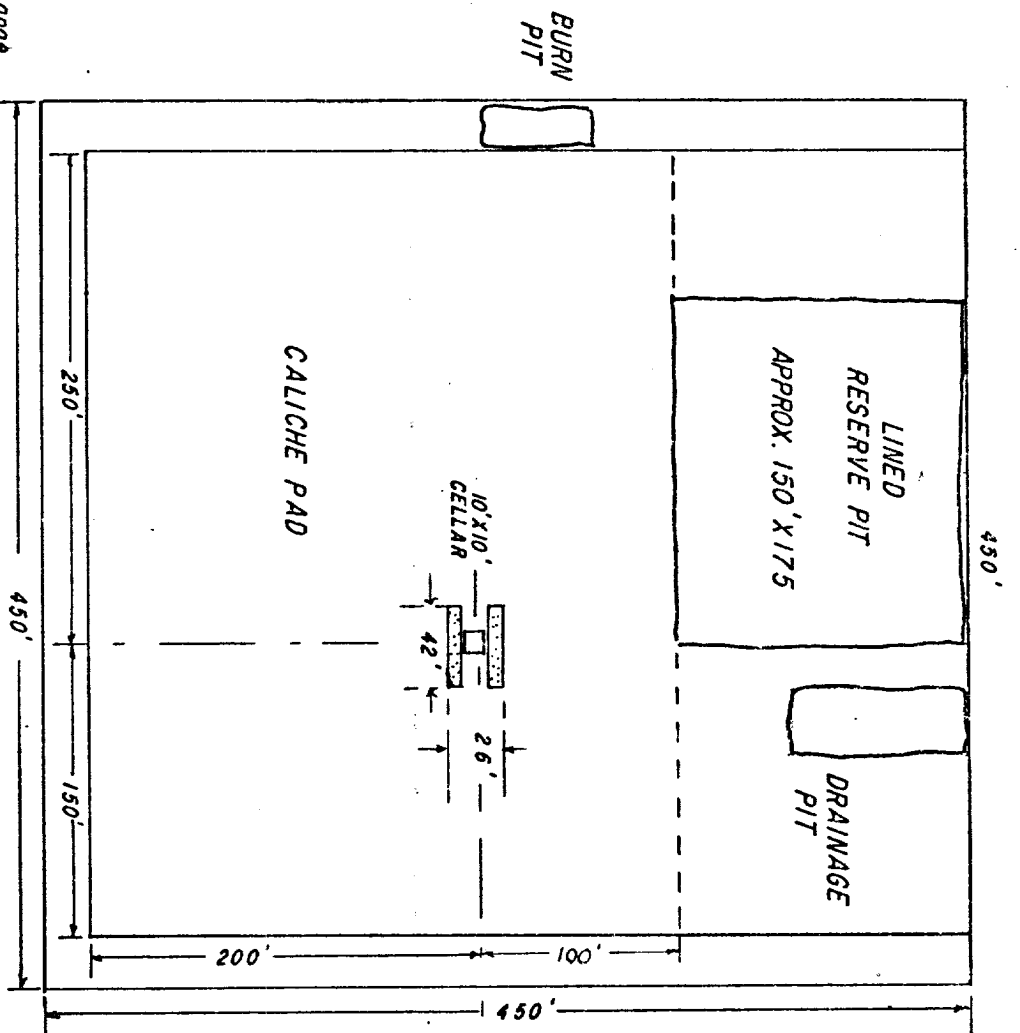
All equipment shall be at least 5,000 psi WP or higher unless otherwise specified.

1. Rotating type BOP, 3,000 psi minimum WP.
2. Hydril or Shaffer bag type preventer.
3. Ram type pressure operated preventer with pipe rams. Use large size pipe rams when drilling with a tapered string.
4. Ram type pressure operated preventer with blind rams.
5. Flanged spool with two 4-inch side outlets.
6. 4-inch flanged plug or gate valve.
7. 4-inch flanged tee.
8. 4-inch flanged plug or gate valve.
9. 4-inch flanged pressure operated gate valve.
10. Ram type pressure operator preventer with pipe rams. Use small size pipe rams when drilling with a tapered drill string.
11. Ram type pressure operated preventer with pipe rams. Use large size pipe rams when drilling with tapered string.
12. Flanged type casing head (furnished by Exxon).
13. 2-inch flanged plug or gate valves (furnished by Exxon).
14. 2-inch threaded flange (furnished by Exxon).
15. Tapped bull plug (furnished by Exxon).
16. Needle valve (furnished by Exxon).
17. 4-inch flanged spacer spool.
18. 4-inch by 2-inch flanged cross.
19. 2-inch flanged plug or gate valve.
20. 2-inch flanged adjustable choke. Replace with flanged 2-inch tee if a remote controlled choke is installed downstream.
21. 4-inch x 4-inch spacer flange w/1-inch tap.
22. 1-inch x 4-inch XXH nipple.
23. 1-inch valve.
24. Cameron (or equal.) 0 - 6000 psi gage.
25. 6-inch pipe, 300' to pit, anchored.
26. 2-1/2-inch line to separator.
27. 2-inch flanged spacer spool.
28. 2-inch weld neck flange.
29. 2-1/2-inch x 2-inch sch. 80 concentric weld reducer.
30. 2-1/2-inch pipe.
31. Pressure operated adjustable choke. (Furnished by Exxon).
32. 2-1/2-inch S.E. gate valve.
33. 2-1/2-inch tee.
34. 2-1/2-inch pipe, 300' to pit, anchored.
35. Threaded flange.
36. 4-inch flanged tee.
37. 3-inch (minimum) hose. (Furnished by Exxon)
38. Trip tank. (Furnished by Exxon)
39. 6-inch 3,000 psi minimum WP manual or pressure operated gate valve.

NOTES:

1. Items 3 and 4 and/or 10 and 11 may be replaced with double ram type preventer. Any side outlets shall be double valved or blind flanged.
2. Only type U, LWS, and QRC ram type preventers with secondary seals are acceptable.
3. The two valves next to the stack on the kill and fill line to be closed unless drill string is being pulled.
4. Kill line is for emergency use only. This connection shall not be used for filling.
5. Replacement rams for each size drill pipe in use and blind rams shall be on location at all times.

NOTE: Dimensions May Change
Due to Terrain or if Other
Rig is Used



— RIG LAYOUT —

EXXON CORPORATION
FAIRVIEW MILLS-FEDERAL NO.1
A.W. THOMPSON INC.
RIG NO. 12