

Submit to Appropriate District Office
 State Lease - 4 copies
 Fee Lease - 3 copies

State of New Mexico
 Energy, Minerals and Natural Resources Department

Form C-102
 Revised 1-1-89

OIL CONSERVATION DIVISION

DISTRICT I
 P.O. Box 1980, Hobbs, NM 88240

P.O. Box 2088

Santa Fe, New Mexico 87504-2088

DISTRICT II
 P.O. Drawer DD, Artesia, NM 88210

DISTRICT III
 1000 Rio Brazos Rd., Aztec, NM 87410

WELL LOCATION AND ACREAGE DEDICATION PLAT

All Distances must be from the outer boundaries of the section

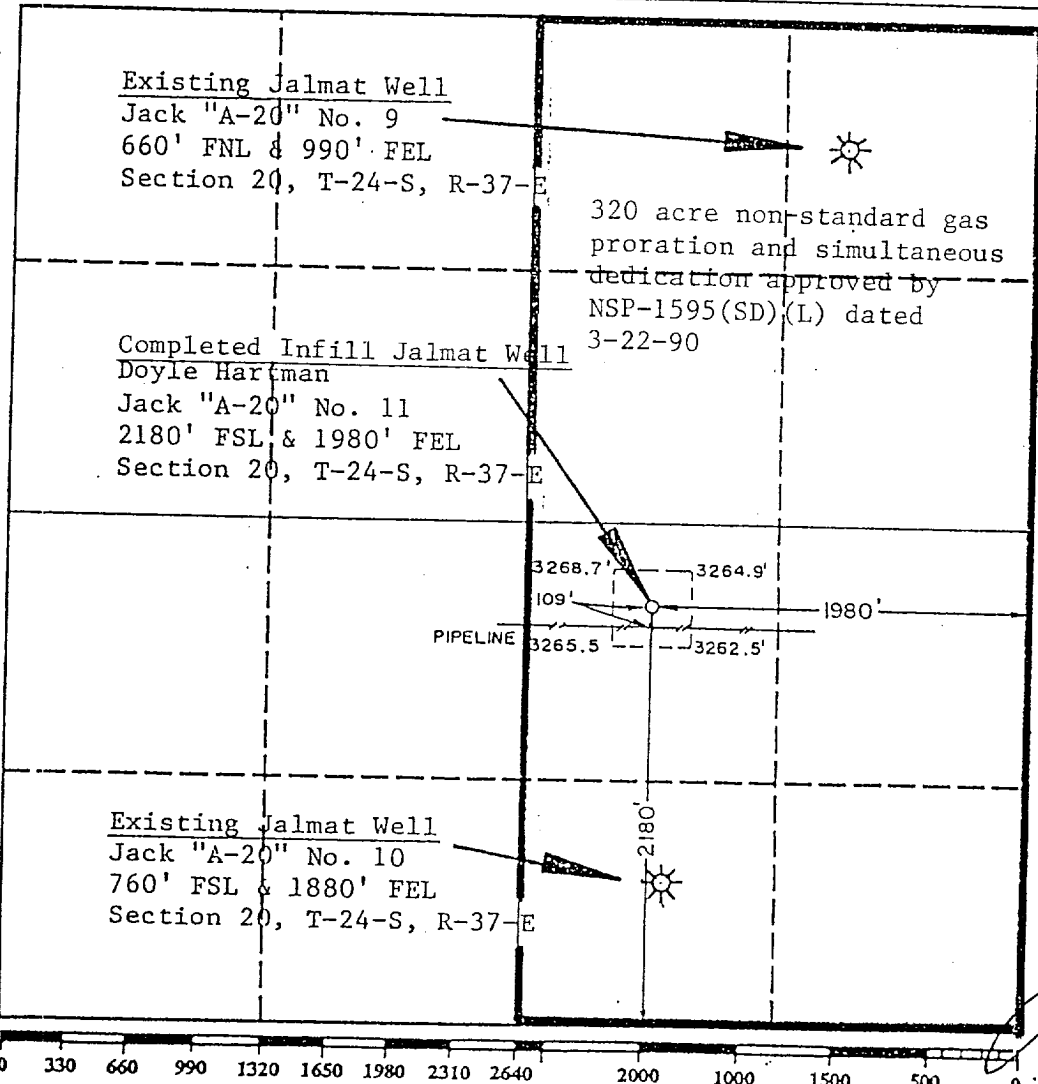
Operator Doyle Hartman			Lease Jack A-20		Well No. 10
Unit Letter 0	Section 20	Township 24 South	Range 37 East	County Lea	
Actual Footage Location of Well: 760 feet from the South line and 1880 feet from the East line					
Ground level Elev. 3266	Producing Formation Tansil-Yates-Seven Rivers		Pool Jalmat (Gas)	Dedicated Acreage: 320 Acres	

- Outline the acreage dedicated to the subject well by colored pencil or hachure marks on the plat below.
- If more than one lease is dedicated to the well, outline each and identify the ownership thereof (both as to working interest and royalty).
- If more than one lease of different ownership is dedicated to the well, have the interest of all owners been consolidated by communitization, unitization, force-pooling, etc.?

Yes No If answer is "yes" type of consolidation _____

If answer is "no" list the owners and tract descriptions which have actually been consolidated. (Use reverse side of this form if necessary.) _____

No allowable will be assigned to the well until all interests have been consolidated (by communitization, unitization, forced-pooling, or otherwise) or until a non-standard unit, eliminating such interest, has been approved by the Division.



OPERATOR CERTIFICATION

I hereby certify that the information contained herein is true and complete to the best of my knowledge and belief.

Signature: *Michael Stewart*

Printed Name: Michael Stewart

Position: Engineer

Company: Doyle Hartman

Date: 5-11-90

SURVEYOR CERTIFICATION

I hereby certify that the well location shown on this plat was plotted from field notes of actual surveys made by me or under my supervision, and that the same is true and correct to the best of my knowledge and belief.

Date Surveyed: September 6, 1989

Signature & Seal: *John W. West*

Professional Surveyor

REGISTERED PROFESSIONAL ENGINEER AND LAND SURVEYOR
 NO. 176
 Certificate No. JOHN W. WEST 676
 JOHNSON & EIDSON 3239
 JOHN W. WEST