

APPROVED BY [Signature] TITLE _____ DATE _____
CONDITIONS OF APPROVAL, IF ANY: _____

NEW MEXICO OIL CONSERVATION COMMISSION
WELL LOCATION AND ACREAGE DEDICATION PLAT

Form No. 1
Supersedes O-128
Effective 1-1-68

All distances must be from the outer boundaries of the Section

Gulf Oil Corporation		West Dollarhide Devonian Unit		119	
H	32	24 South	38 East	Lea	
2180		North		450	
feet from the		line and		feet from the	
Devonian		Dollarhide Devonian		40	

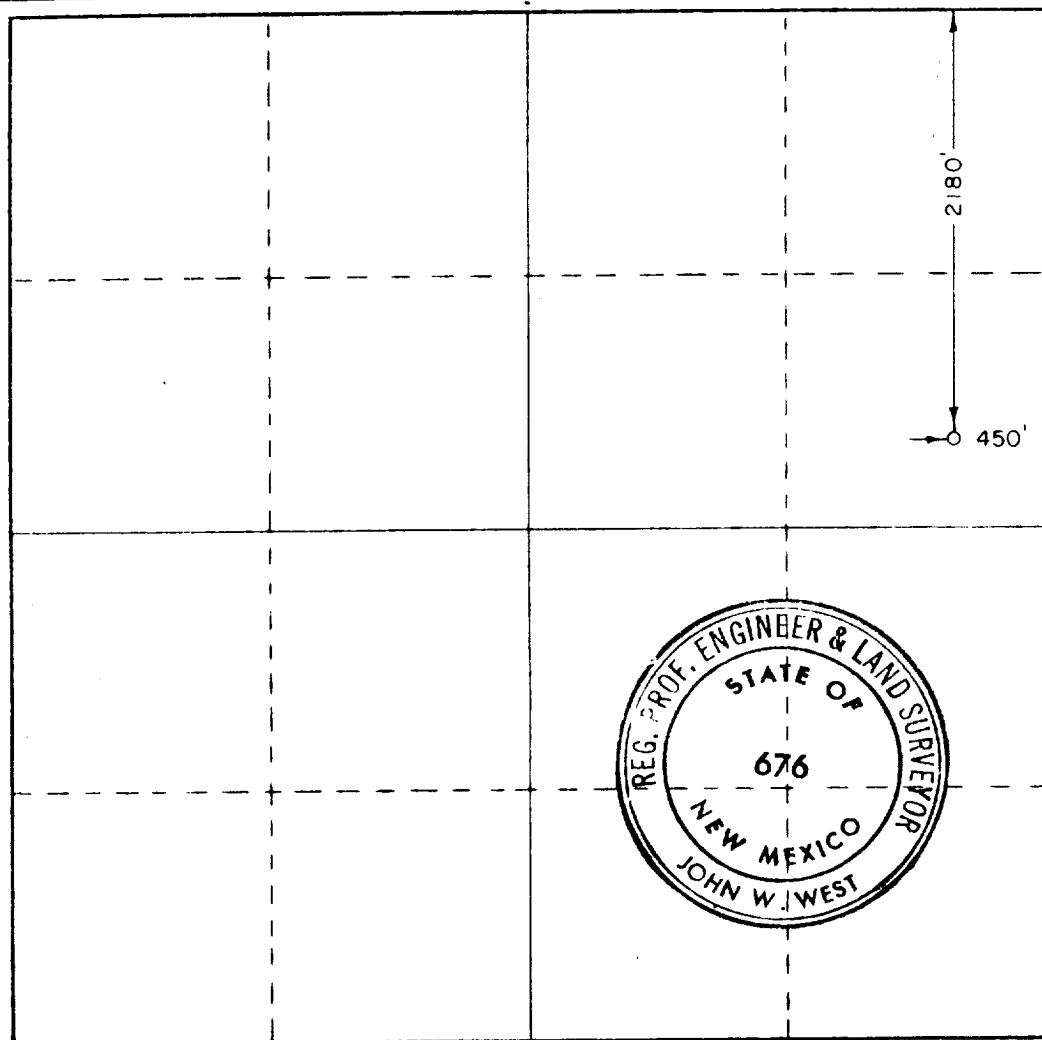
1. Outline the acreage dedicated to the subject well by colored pencil or hatchure marks on the plat below
2. If more than one lease is dedicated to the well, outline each and identify the ownership thereof (both as to working interest and royalty).
3. If more than one lease of different ownership is dedicated to the well, have the interests of all owners been consolidated by communization, unitization, force-pooling, etc?

☐ Yes ☐ No If answer is "yes," type of consolidation _____

If answer is "no," list the owners and tract descriptions which have actually been consolidated (Use reverse side of this form if necessary.) _____

No allowable will be assigned to the well until all interests have been consolidated (by communization, unitization, forced-pooling, or otherwise) or until a non-standard unit, eliminating such interests, has been approved by the Commission.

Corrected form to show correct well No. Originally submitted as Well No. 103-Y



CERTIFICATION

I hereby certify that the information contained herein is true and complete to the best of my knowledge and belief.

C. D. Borland

Name

C. D. BORLAND

Position

Area Production Manager

Company

Gulf Oil Corporation

Date

December 11, 1974

I hereby certify that the well location shown on this plat was plotted from field notes of actual surveys made by me or under my supervision and that the same is true and correct to the best of my knowledge and belief.

Date Surveyed

December 5, 1974

Registered Professional Engineer and Land Surveyor

John W. West

Certificate No.

676

0 330 660 990 1320 1650 1980 2310 2640 2000 1800 1600 1400 1200 1000 800 600 400 200 0