

**NEW MEXICO OIL CONSERVATION COMMISSION
WELL LOCATION AND ACREAGE DEDICATION PLAT**

Form C-102
Supersedes C-128
Effective 1-1-65

All distances must be from the outer boundaries of the Section.

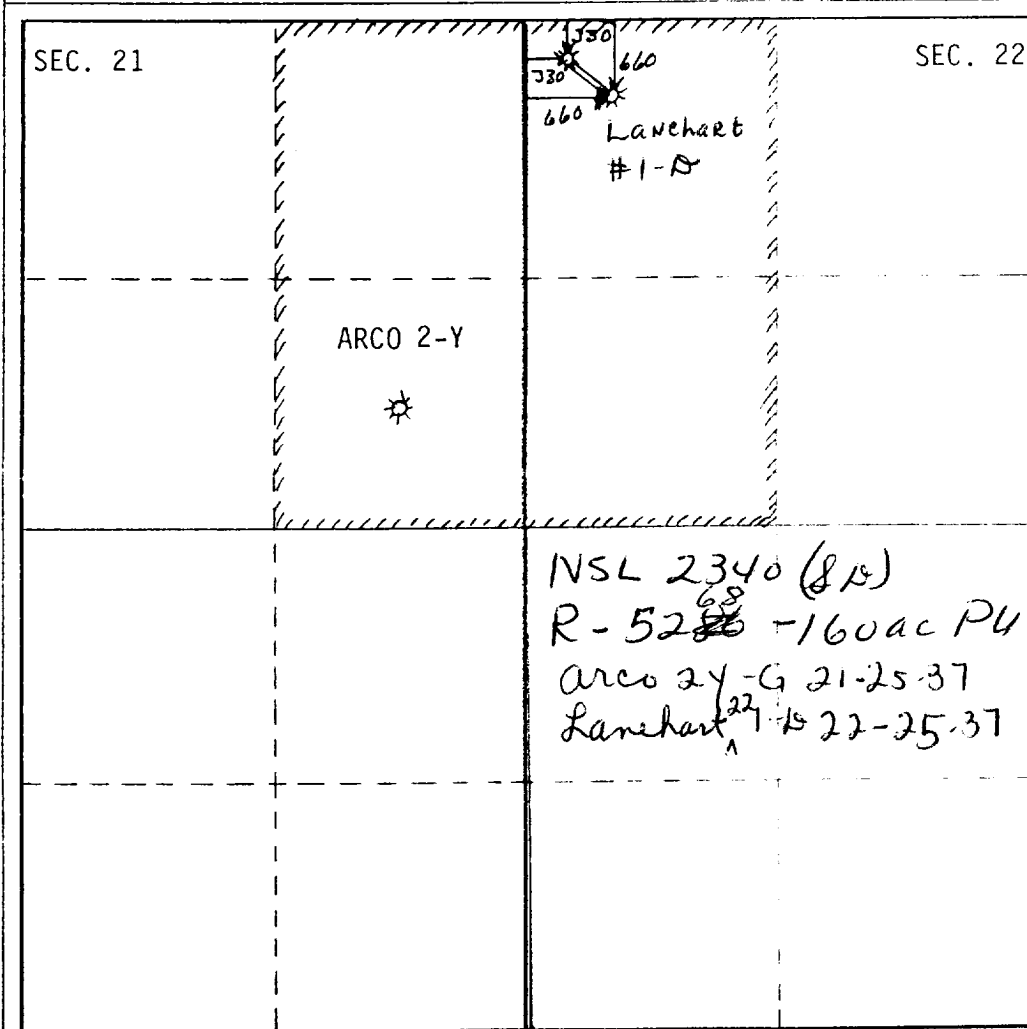
Operator LEWIS B. BURLESON, INC.			Lease ARCO		Well No. 2Y
Unit Letter H	Section 21	Township 25S	Range 37E	County LEA	
Actual Footage Location of Well: <div style="display: flex; justify-content: space-between;"> 660 feet from the East line and 1770 feet from the North line </div>					
Ground Level Elev. 3075	Producing Formation Yates	Pool Jalmat		Dedicated Acreage: 160 Acres	

- Outline the acreage dedicated to the subject well by colored pencil or hachure marks on the plat below.
- If more than one lease is dedicated to the well, outline each and identify the ownership thereof (both as to working interest and royalty).
- If more than one lease of different ownership is dedicated to the well, have the interests of all owners been consolidated by communitization, unitization, force-pooling, etc?

☐ Yes ☐ No If answer is "yes," type of consolidation: _____

If answer is "no," list the owners and tract descriptions which have actually been consolidated. (Use reverse side of this form if necessary.) _____

No allowable will be assigned to the well until all interests have been consolidated (by communitization, unitization, forced-pooling, or otherwise) or until a non-standard unit, eliminating such interests, has been approved by the Commission.



CERTIFICATION

I hereby certify that the information contained herein is true and complete to the best of my knowledge and belief.

Lewis B. Burleson

President

Lewis B. Burleson, Inc.

8-6-87

I hereby certify that the well location shown on this plat was plotted from field notes of actual surveys made by me or under my supervision, and that the same is true and correct to the best of my knowledge and belief.

Professional Engineer
and Surveyor
1921 A-211
1921 A-211
1921 A-211

Certificate No. _____

COMPASSION
A Division of A.C. Hulse Company

© Copyrighted Reproduction Prohibited

COUNTY LEA FIELD Jalmat & Langlie Mattix STATE NM

OPR BURLESON & HUFF API 30-025-25174

NO 2x LEASE Arco SERIAL 2-2-23 NM

Sec 21, T25S, R37E MAP

1770' FNL, 660' FEL of Sec CO-ORD

1 mi E/Jal ELEV [REDACTED] LBS

SPO 11-20-75 CMP 12-30-75 WELL CLASS: INT D FIN DO

CSG

FORMATION	DATUM	FORMATION	DATUM
8 5/8" at 807' w/375 sX			
4 1/2" at 3500' w/250 sX			
TD 3500' (QUEN)		PBD	

IP (Yates) Perfs 3009-48' CAOFP 36 MCFGPD. GOR Dry; Grav (Gas)
.660; SIWHP 118#

IP (Queen) Perfs 3365-75' F 12 BOPD + 5 BW. Pot based on 24 hr
test thru 48/64" chk. GOR 3776; Grav 36; CP Pkr; TP 25-50#

CONTR MCF OPR'S ELE 3076' GL PD 3500' RT

F.R. 12-1-75
(Queen)
(Replacement well for #1, J&A)

2-14-76 AMEND LEASE NAME & FIELD NAME: Formerly reported as
Arco-Lanehart and Langlie Mattix

12-3-75 TD 3500'; PBD 3480'; MICU

12-10-75 TD 3500'; PBD 3480'; Prep Frac
Perf (Queen) 3365-75' w/1 SPF
Acid (3365-75') 1000 gals
Swbd sli show oil & gas (3365-75')

12-16-75 TD 3500'; PBD 3480'; Flwg Ld
Frac (3365-75') 20,000 gals wtr + 20,000# sd

1-8-76 TD 3500'; PBD 3480'; WO Pot
Flwd 12 BO + 5 BW in 24 hrs, 3/4" chk (3365-75')

1-14-76 TD 3500'; PBD 3480'; WO Pot
Perf (Yates) 3009-48' w/16 shots (overall)
Acid (3009-48') 1000 gals

2-2-23 NM

LEA
BURLESON & HUFF

Langlie Mattix
2x Arcó
Sec 21, T25S, R37E

NM
Page #2

1-14-76

Continued

1-19-76

CAOF 36 MCFGPD (3009-48')

2-9-76

TD 3500'; PBD 3480'; WO (Yates) Pot

TD 3500'; PBD 3480'; Complete

Queen Completed 12-22-75

(Yates) FOUR POINT GAUGES:

Flwd 19 MCFGPD, 3/32" chk, 60 mins, CP 95#

Flwd 25 MCFGPD, 3/16" chk, 45 mins, CP 50#

Flwd 29 MCFGPD, 3/16" chk, 45 mins, CP 40#

Flwd 32 MCFGPD, 3/16" chk, 45 mins, CP 30#

LOG TOPS: Anhy 920', Salt 1050', Yates

2745', Seven Rivers 3052', Queen 3310'

2-14-76

COMPLETION ISSUED

2-2-23 NM

**NEW MEXICO OIL CONSERVATION COMMISSION
WELL LOCATION AND ACREAGE DEDICATION PLAT**

Form C-102
Supersedes C-128
Effective 1-1-65

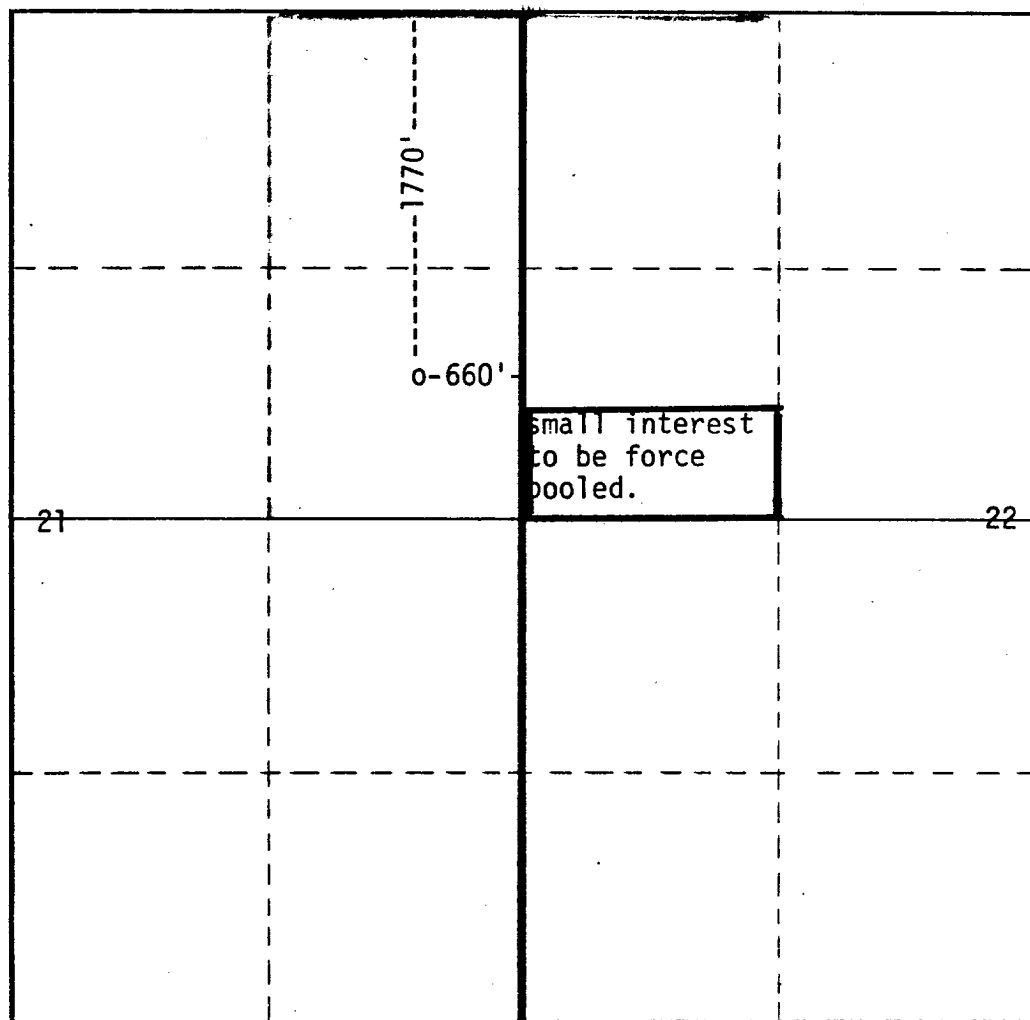
All distances must be from the outer boundaries of the Section.

Operator Burleson & Huff			Lease Arco		Well No. 2-Y
Unit Letter H	Section 21	Township 25-South	Range 37-East	County Lea	
Actual Footage Location of Well: . 660 feet from the East line and 1770 feet from the North line					
Ground Level Elev. 3075	Producing Formation Yates		Pool Jalmat Gas		Dedicated Acreage: 160 Acres

1. Outline the acreage dedicated to the subject well by colored pencil or hachure marks on the plat below.
2. If more than one lease is dedicated to the well, outline each and identify the ownership thereof (both as to working interest and royalty).
3. If more than one lease of different ownership is dedicated to the well, have the interests of all owners been consolidated by communitization, unitization, force-pooling, etc?

☐ Yes ☒ No If answer is "yes," type of consolidation Must force pool

If answer is "no," list the owners and tract descriptions which have actually been consolidated. (Use reverse side of this form if necessary.) All leases except very small interest in S/2 SW/4 NW/4 will go into unit. This small interest must be force pooled.
 No allowable will be assigned to the well until all interests have been consolidated (by communitization, unitization, forced-pooling, or otherwise) or until a non-standard unit, eliminating such interests, has been approved by the Commission.



CERTIFICATION

I hereby certify that the information contained herein is true and complete to the best of my knowledge and belief.

Name

Position

Co-Owner

Company

Burleson & Huff

Date

January 19, 1976

I hereby certify that the well location shown on this plat was plotted from field notes of actual surveys made by me or under my supervision, and that the same is true and correct to the best of my knowledge and belief.

Date Surveyed

Registered Professional Engineer
and/or Land Surveyor

Certificate No.