

NEW MEXICO OIL CONSERVATION COMMISSION
WELL LOCATION AND ACREAGE DEDICATION FORM

Form C-102
Supersedes C-128
Effective 1-1-65

All distances must be from the outer boundaries of the Section.

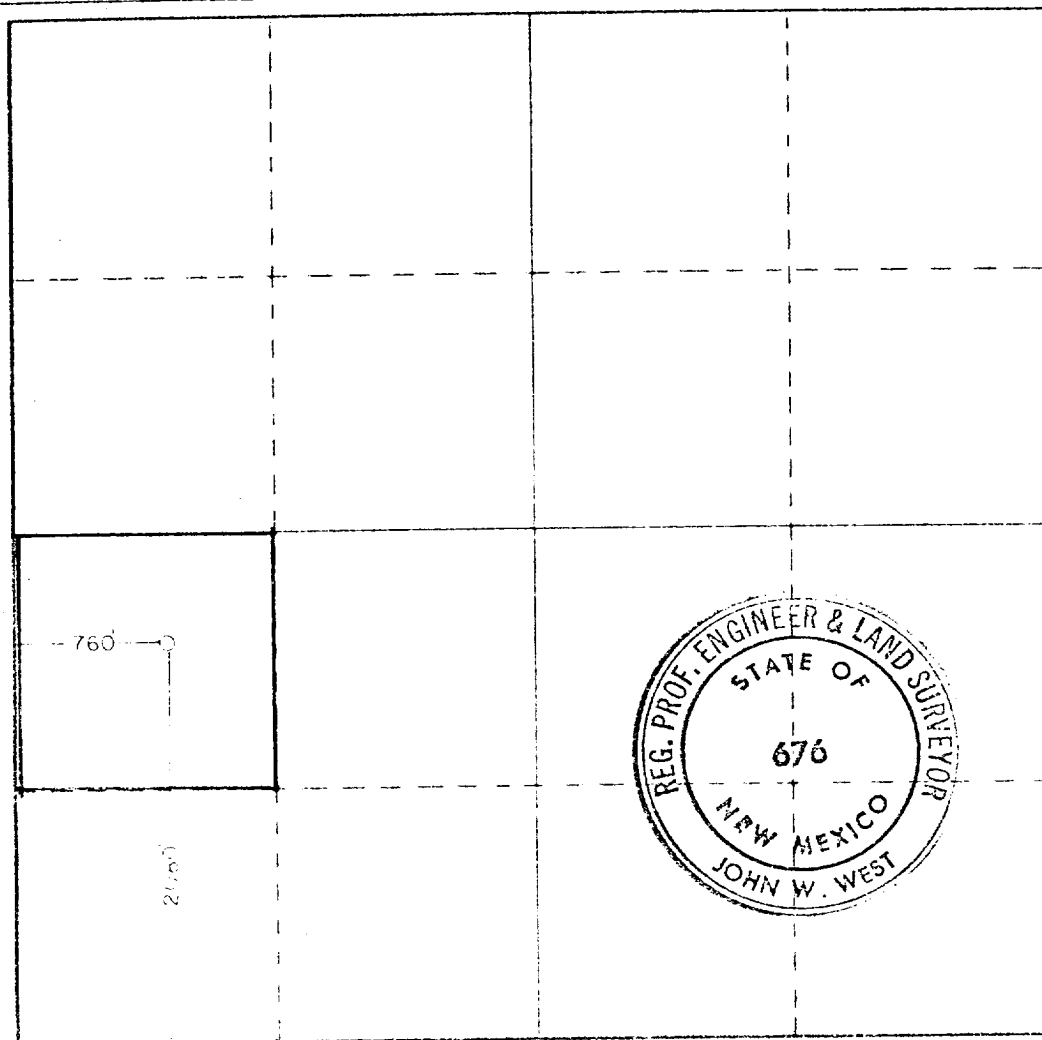
Operator Gulf Oil Corporation		Lease C. D. Woolworth		Well No. 4
Unit Entry L	Section 30	Township 24 South	Range 37 East	County Lea
Actual Platage Location of Well: 2080 feet from the South line and 760 feet from the West line				
Ground Level Elev. 3265.4	Producing Formation Seven Rivers Queen	Pool Langlie Mattix	Dedicated Acreage: 40 Acres	

1. Outline the acreage dedicated to the subject well by colored pencil or hachure marks on the plat below.
2. If more than one lease is dedicated to the well, outline each and identify the ownership thereof (both as to working interest and royalty).
3. If more than one lease of different ownership is dedicated to the well, have the interests of all owners been consolidated by communitization, unitization, force-pooling, etc?

☐ Yes ☐ No If answer is "yes," type of consolidation _____

If answer is "no," list the owners and tract descriptions which have actually been consolidated (Use reverse side of this form if necessary.) _____

No allowable will be assigned to the well until all interests have been consolidated (by communitization, unitization, forced-pooling, or otherwise) or until a non-standard unit, eliminating such interests, has been approved by the Commission.



CERTIFICATION

I hereby certify that the information contained herein is true and complete to the best of my knowledge and belief.

C. D. Borland

Name

C. D. BORLAND

Position

Area Production Manager

Company

Gulf Oil Corporation

Date

February 15, 1977

I hereby certify that the well location shown on this plat was plotted from field notes of actual surveys made by me or under my supervision, and that the same is true and correct to the best of my knowledge and belief.

February 10, 1977

Date Surveyed

Registered Professional Engineer and Land Surveyor

John W. West

Certificate No.

676

0 100 200 300 400 500 600 700 800 900 1000 1100 1200 1300 1400 1500 1600 1700 1800 1900 2000 2100 2200 2300 2400 2500 2600 2700 2800 2900 3000

RECEIVED

NOV 1977

U.S. DEPARTMENT OF JUSTICE

1-1