

WELL LOCATION AND ACREAGE DEDICATION PLAT

Supersedes G-126
Effective 1-1-65

All distances must be from the outer boundaries of the Section.

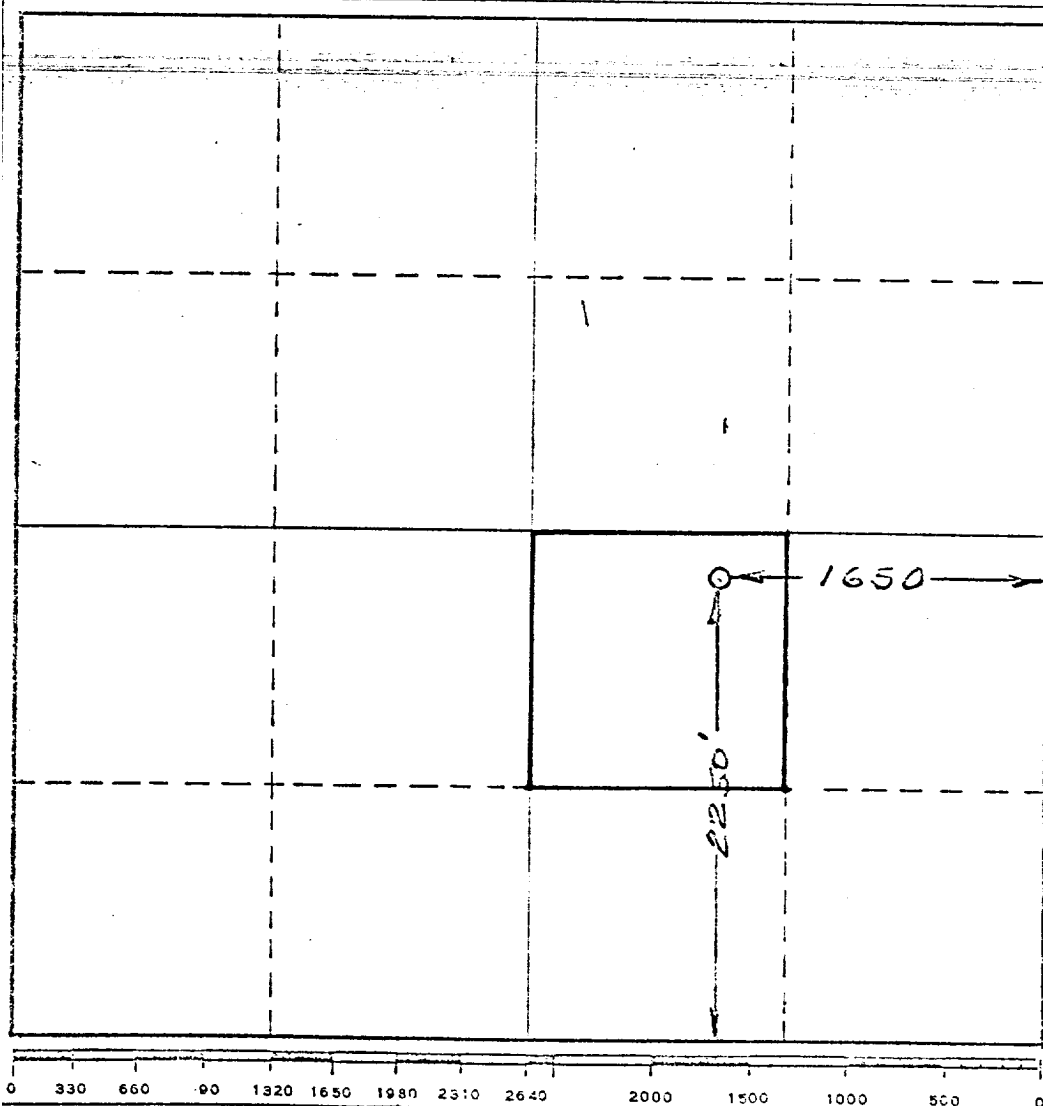
Operator GETTY OIL COMPANY			Lease J.W. Sherrell		Well No. 9
Unit Letter J	Section 31	Township 24S.	Range 37E.	County Lea	
Actual Footage Location of Well: 2250 feet from the South line and 1650 feet from the East line					
Ground Level Elev. 3224	Producing Formation Yates		Pool Jalmat Yates (Oil)	Dedicated Acreage: 40 Acres	

1. Outline the acreage dedicated to the subject well by colored pencil or hachure marks on the plat below.
2. If more than one lease is dedicated to the well, outline each and identify the ownership thereof (both as to working interest and royalty).
3. If more than one lease of different ownership is dedicated to the well, have the interests of all owners been consolidated by communitization, unitization, force-pooling, etc?

☐ Yes ☐ No If answer is "yes," type of consolidation _____

If answer is "no," list the owners and tract descriptions which have actually been consolidated. (Use reverse side of this form if necessary.) _____

No allowable will be assigned to the well until all interests have been consolidated (by communitization, unitization, forced-pooling, or otherwise) or until a non-standard unit, eliminating such interests, has been approved by the Commission.



CERTIFICATION

I hereby certify that the information contained herein is true and complete to the best of my knowledge and belief.

Name
Ernie Buttriss
Position
Engineer
Company
Getty Oil Company
Date
September 1, 1978

I hereby certify that the well location shown on this plat was plotted from field notes of actual surveys made by me or under my supervision, and that the same is true and correct to the best of my knowledge and belief.

Date Survey
AUG 22, 1978
Registered Professional Engineer
and/or Land Surveyor
HERSCHEL E. JONES
3640
Certificate
REGISTERED LAND SURVEYOR