

**NEW MEXICO OIL CONSERVATION COMMISSION
WELL LOCATION AND ACREAGE DEDICATION PLAT**

Form C-102
Supersedes C-128
Effective 1-1-65

All distances must be from the outer boundaries of the Section

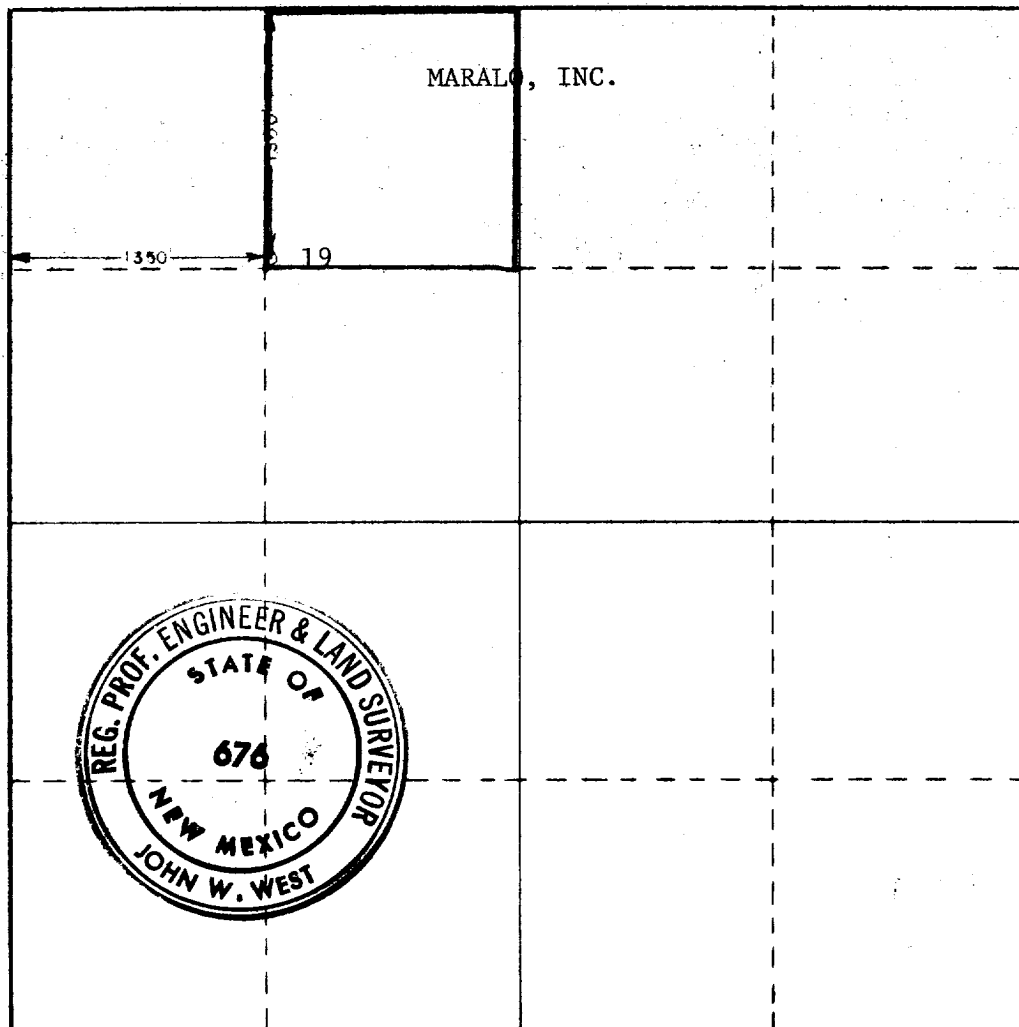
Operator Maralo, Inc.			Lease Jal M A T Yates Unit		Well No. 19
Unit Letter C	Section 18	Township 25 South	Range 37 East	County Lea	
Actual Footage Location of Well: 1300 feet from the North line and 1350 feet from the West line					
Ground Level Elev. 3147.95	Producing Formation Yates		Pool Jalmat		Dedicated Acreage: 40 Acres

1. Outline the acreage dedicated to the subject well by colored pencil or hachure marks on the plat below.
2. If more than one lease is dedicated to the well, outline each and identify the ownership thereof (both as to working interest and royalty).
3. If more than one lease of different ownership is dedicated to the well, have the interests of all owners been consolidated by communitization, unitization, force-pooling, etc?

☐ Yes ☐ No If answer is "yes," type of consolidation _____

If answer is "no," list the owners and tract descriptions which have actually been consolidated. (Use reverse side of this form if necessary.) _____

No allowable will be assigned to the well until all interests have been consolidated (by communitization, unitization, forced-pooling, or otherwise) or until a non-standard unit, eliminating such interests, has been approved by the Commission.



CERTIFICATION

I hereby certify that the information contained herein is true and complete to the best of my knowledge and belief.

Teray A. Hunt
Name

Drilling Supt.

Position

Maralo, Inc.

Company

July 18, 1979

Date

I hereby certify that the well location shown on this plat was plotted from field notes of actual surveys made by me or under my supervision, and that the same is true and correct to the best of my knowledge and belief.

Date Surveyed

September 5, 1978

Registered Professional Engineer
and/or Land Surveyor

John W. West

Certificate No. John W. West

676

Ronald J. Eidson 3239

