

NEW MEXICO OIL CONSERVATION COMMISSION
WELL LOCATION AND ACREAGE DEDICATION PLAT

Form C-102
Supersedes C-128
Effective 1-1-65

All distances must be from the outer boundaries of the Section

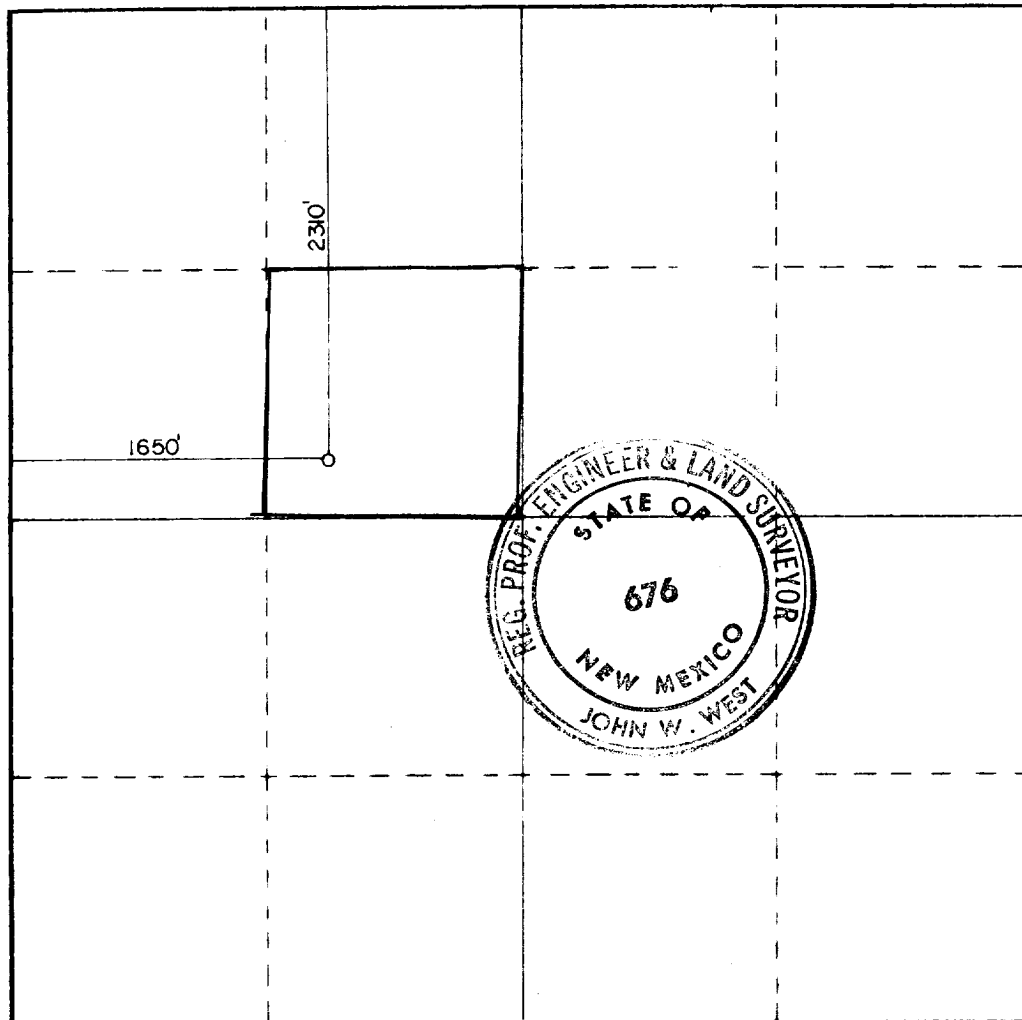
Operator JOHN YURONKA		Lease HARRISON "A"		Well No. 2	
Section 29	Township 24 SOUTH	Range 37 EAST	County LEA		
Actual Well Location of Well:					
2310 feet from the NORTH line and		1650 feet from the WEST line			
Ground Elev. 3282.0	Producing Formation Seven Rivers Queen	Pool Langlie Mattix	Dedicated Acreage 40		

1. Outline the acreage dedicated to the subject well by colored pencil or hatchure marks on the plat below.
2. If more than one lease is dedicated to the well, outline each and identify the ownership thereof (both as to working interest and royalty).
3. If more than one lease of different ownership is dedicated to the well, have the interests of all owners been consolidated by communitization, unitization, force-pooling, etc?

☐ Yes ☐ No If answer is "yes," type of consolidation _____

If answer is "no," list the owners and tract descriptions which have actually been consolidated. (Use reverse side of this form if necessary.) _____

No allowable will be assigned to the well until all interests have been consolidated (by communitization, unitization, forced-pooling, or otherwise) or until a non-standard unit, eliminating such interests, has been approved by the Commission.



CERTIFICATION

I hereby certify that the information contained herein is true and complete to the best of my knowledge and belief.

Name *John Yuronka*

Position **Authorized Agent**

Company **John Yuronka**

Date **October 1, 1979**

I hereby certify that the well location shown on this plat was plotted from field notes of actual surveys made by me or under my supervision, and that the same is true and correct to the best of my knowledge and belief.

Date Surveyed **SEPTEMBER 22ND, 1979**

Registered Professional Engineer and/or Land Surveyor

John W. West

Certificate No. **John W. West 676**
Ronald J. Eidson 3239

0 330 660 990 1320 1650 1980 2310 2640 2000 1800 1000 500 0