



ALPHA TWENTY-ONE PRODUCTION COMPANY

POST OFFICE BOX 1206
JAL. NEW MEXICO 88252

505/395-3056

September 11, 1984

Oil Conservation Division
P.O. Box 2088
Santa Fe, NM 87501

ATTN: Mr. Richard L. Stamets

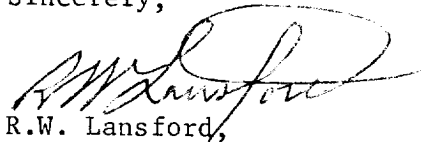
RE: El Paso Smith No. 1
Sec. 21, T-24-S, R-37-E,
Lea County, New Mexico

Gentlemen:

Enclosed for your review and records find the Log-Off Test Report, daily written reports for the test period, meter charts to document the test, cost breakdown, and cost analysis Gas Sales/LOE for the above referenced well.

If you desire anything further, please contact me.

Sincerely,



R.W. Lansford,
Vice President/Energy Resources

RWL/tic
Enclosures

cc: Robert Strand
P.O. Drawer 700
Roswell, NM 88202

Oil Conservation Division
P.O. Box 1980
Hobbs, NM 88240

Alpha Twenty-One Production Company
2100 First National Bank Building
Midland, TX 79701
ATTN: Mr. Tom Phipps



ALPHA TWENTY-ONE PRODUCTION COMPANY

POST OFFICE BOX 1206
JAL, NEW MEXICO 88252

505/395-3056

September 4, 1984

RESULTS OF LOG-OFF TEST ON EL PASO SMITH NO. 1

The results of this test show that it takes this particular well about three days to log-off, and between two and three days to return to a normal flow rate.

The normal amount of water produced for a 24 hour period is approximately four or five barrels. After the well is down for 24 to 48 hours, it produces between eight and ten barrels of water per day.

If this well was to be shut in for over three days, the water build-up would probably cause the well to completely log-off and not return to normal production for four or five days, if it ever returned to normal.

To protect our correlative rights and prevent permanent well damage or complete loss of the well, I, therefore, recommend that this well should be allowed to be produced continuously at the normal tested flow rate.

Mike Copeland,
Production Foreman



ALPHA TWENTY-ONE PRODUCTION COMPANY

POST OFFICE BOX 1206
JAL. NEW MEXICO 88252

505/395-3056

September 4, 1984

Report on El Paso Smith No. 1 as follows:

- 8-20-84 Started the log-off test on this well by installing a 24-hour orifice meter and a 24-hour pressure recorder for the tubing and casing. At 9:00 a.m., a 24-hour flow period was started to establish an average flow rate. The choke size is 44/64. The tubing pressure 36 psi, casing 40 psi. Present rate at the start was 73 MCFPD. The Hobbs OCD did not witness the start, but I was authorized to go ahead by David with the Hobbs office.
- 8-21-84 9:00 a.m. At the end of 24 hours, the well was flowing at 75 MCFPD for an average of 74 MCFPD. Tubing was 40 psi, casing was 41 psi. Produced 4.16 bbls water for the 24 hour period. Pumping unit was shut down to allow the well to log off.
- 8-22-84 9:00 a.m. The well is presently down to 59 MCFPD, Tubing 36 psi, casing 37 psi. Produced 0 bbls water for the 24 hour period
- 8-23-84 9:00 a.m. The well is presently at the rate of 29 MCFPD. Tubing 28 psi, casing 29 psi. Produced 0 bbls water for the 24 hour period.
- 8-24-84 9:00 a.m. The well is presently down to 17 MCFPD and is trying to log-off. Tubing 18 psi, casing 20 psi. The well logged-off between 5:00 p.m. and 6:00 p.m. today.
- 8-25-84 9:00 a.m. Started the pumping unit to record the rate of gas return. After 4 hours it was back up to 50 MCFPD. Tubing 17 psi, casing 18 psi at the start. Produced 0 bbls water for the 24 hour period.
- 8-26-84 9:00 a.m. The well is up to 66 MCFPD, but not back to normal. Tubing 33 psi, casing 39 psi. Produced 8.32 bbls water for the 24 hour period. At 12:00 noon, the well was up to 69 MCFPD. Continued flow rate until the next morning.
- 8-27-84 9:00 a.m. The well is back up to the normal flow rate of 74 MCFPD. Tubing 34 psi, casing 39 psi. Produced 5.20 bbls water for the 24 hour period. The pumping unit was shut down to log the well off and verify the previous results.
- 8-28-84 9:00 a.m. The well is presently down to 55 MCFPD. Tubing 26.5 psi, casing 29 psi. Produced 0 bbls water for the 24 hour period.

8-29-84

9:00 a.m. The well is presently down to 29 MCFPD and is trying to log-off. Tubing 17 psi, casing 19 psi. Produced 0 bbls water for the 24 hour period. The well logged off at about 7:00 p.m.

8-30-84

9:00 a.m. Started the pumping unit to verify the rate of gas return. Tubing 16 psi, casing 18 psi. Produced 0 bbls water for the 24 hour period. In approximately 7 hours, the well was back up to about 70 MCFPD.

8-31-84

9:00 a.m. The well is back up to 73 MCFPD. Tubing 36 psi, casing 41 psi. Produced 10.4 bbls water for the 24 hour period.

PRINTED
U.S.A.

3

4

5

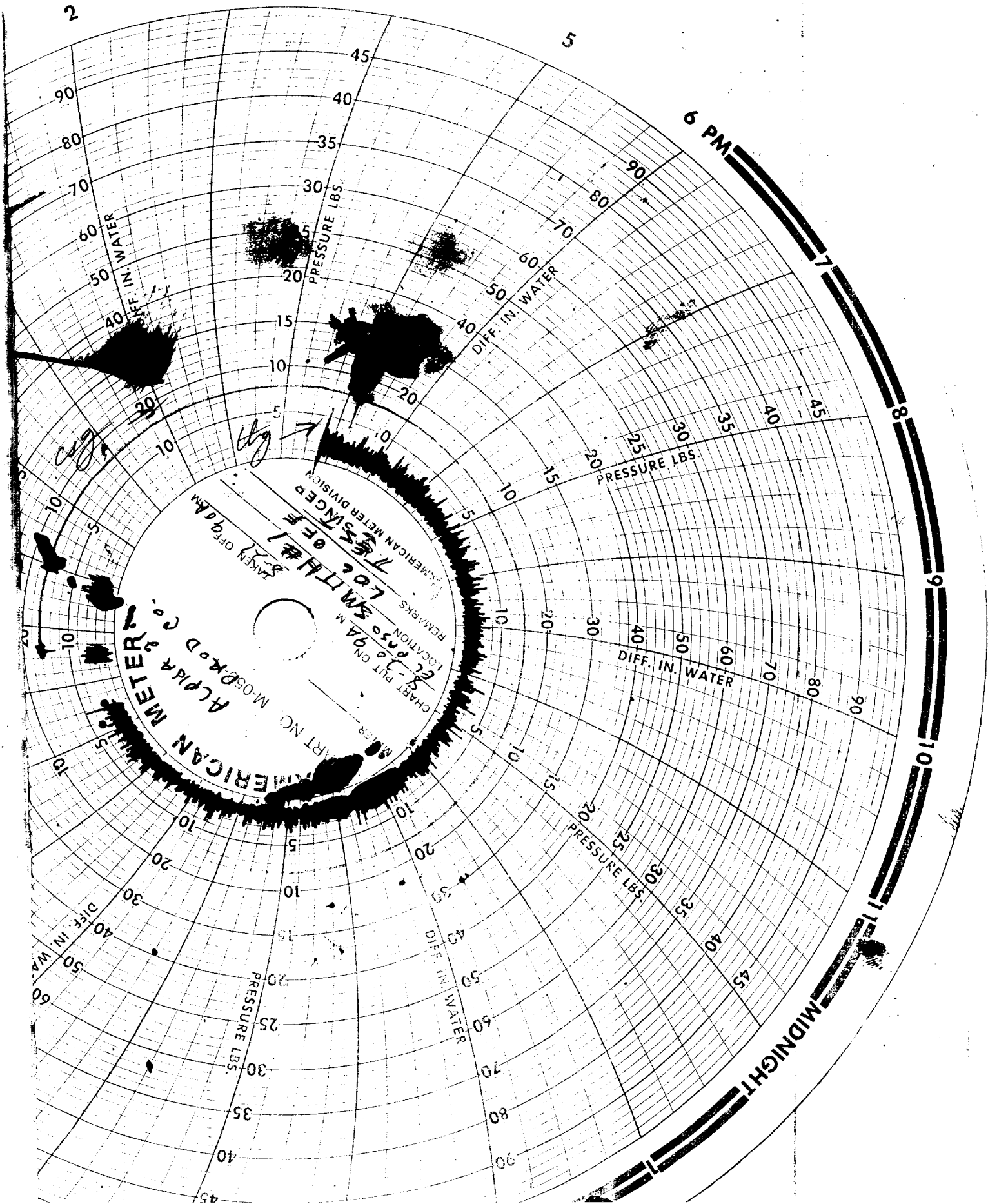
6 PM

8

9

10

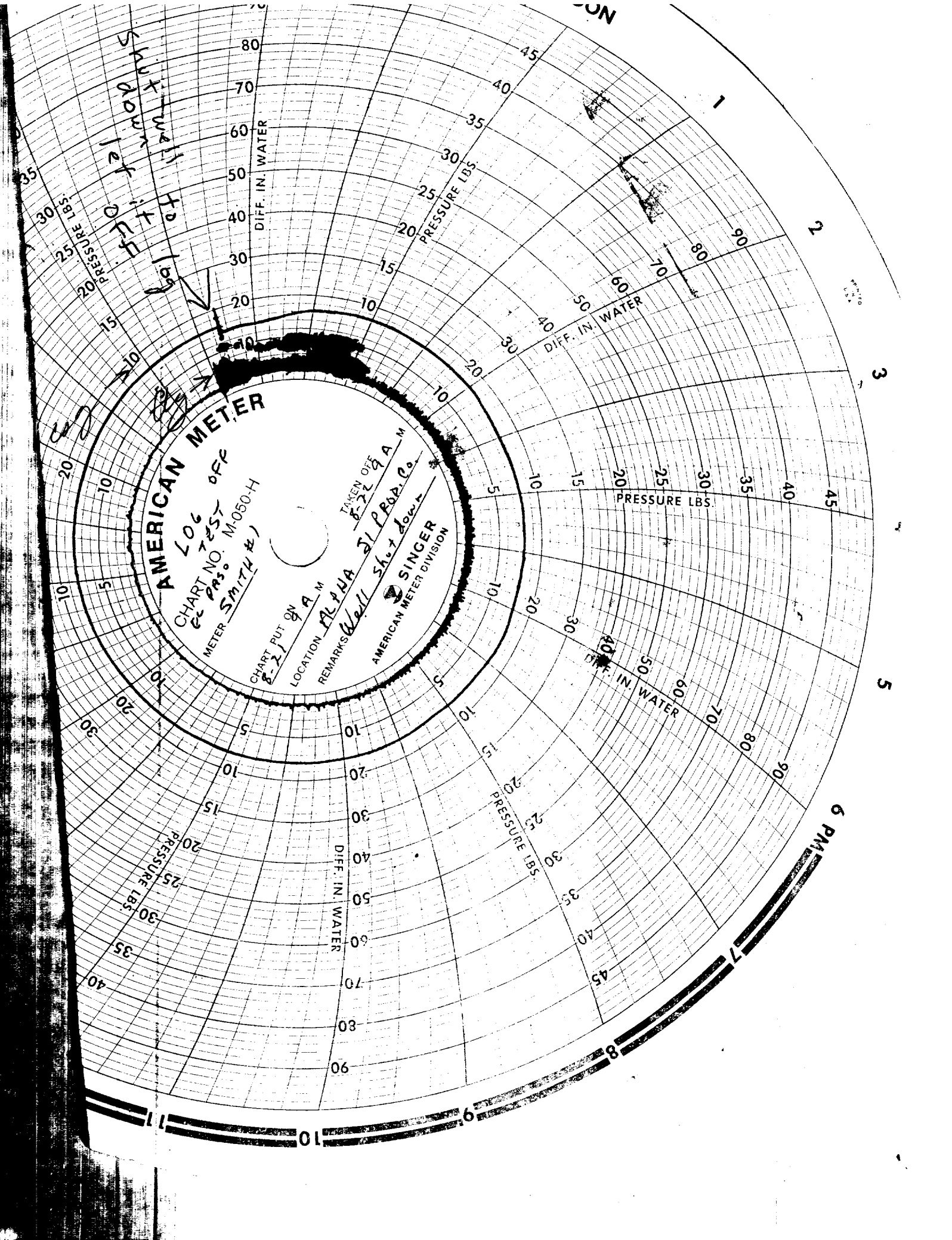
MIDNIGHT



RECEIVED

SEP 14 1984

C.C.D.
HOBBS OFFICE



AMERICAN METER

LOG 7-25-06
CHART NO. M-050-H
METER SMITH #

CHART PUT ON 8-21-06
LOCATION ALPHA 31 P.P.D. Co.
REMARKS Well shut down
SINGER
AMERICAN METER DIVISION

shut well to log
shut it off

6 PM

RECEIVED

SEP 14 1984

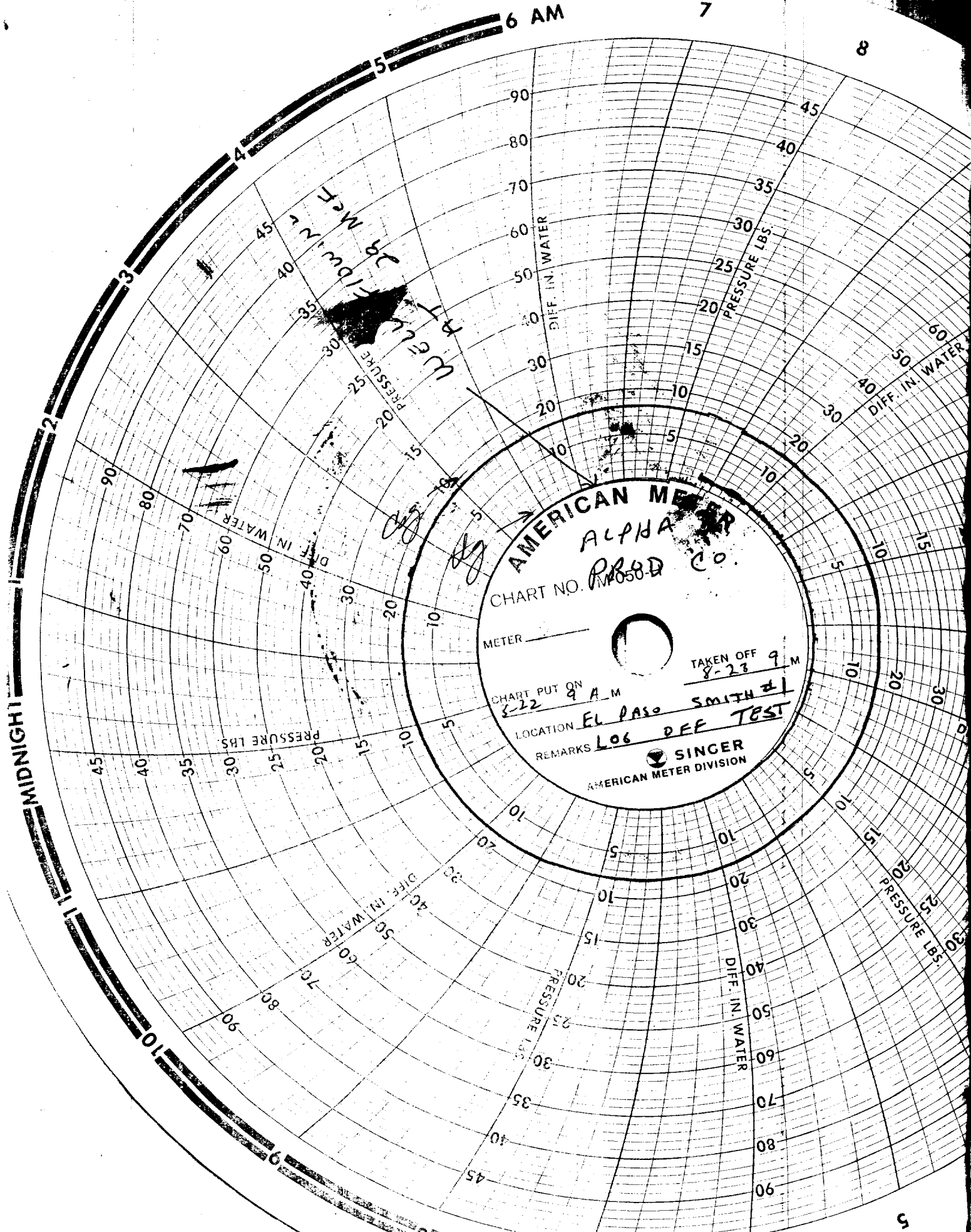
O.C.D.
HOBBS OFFICE

MIDNIGHT

6 AM

7

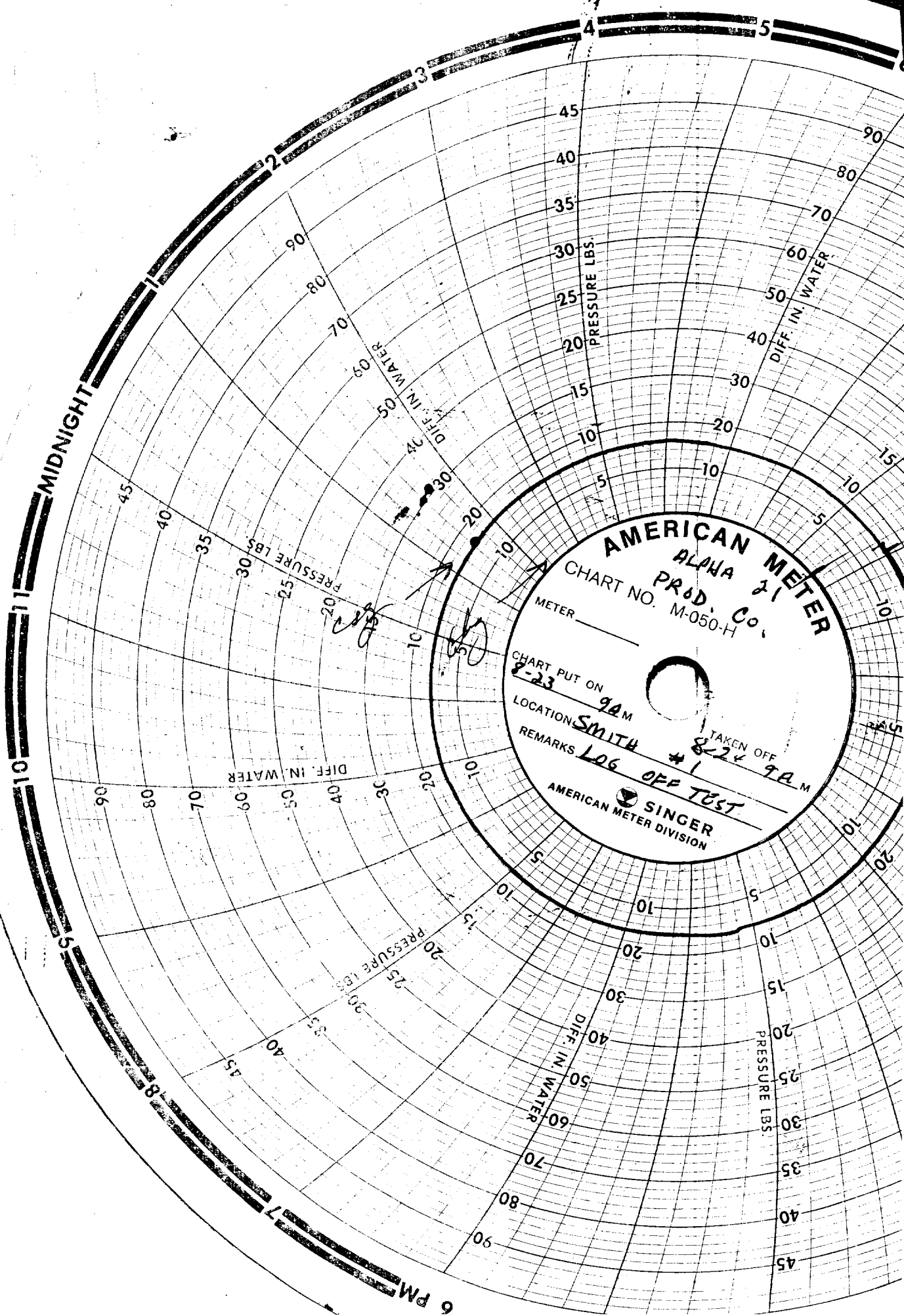
8



RECEIVED

SEP 14 1984

O.C.D.
HOBBS OFFICE



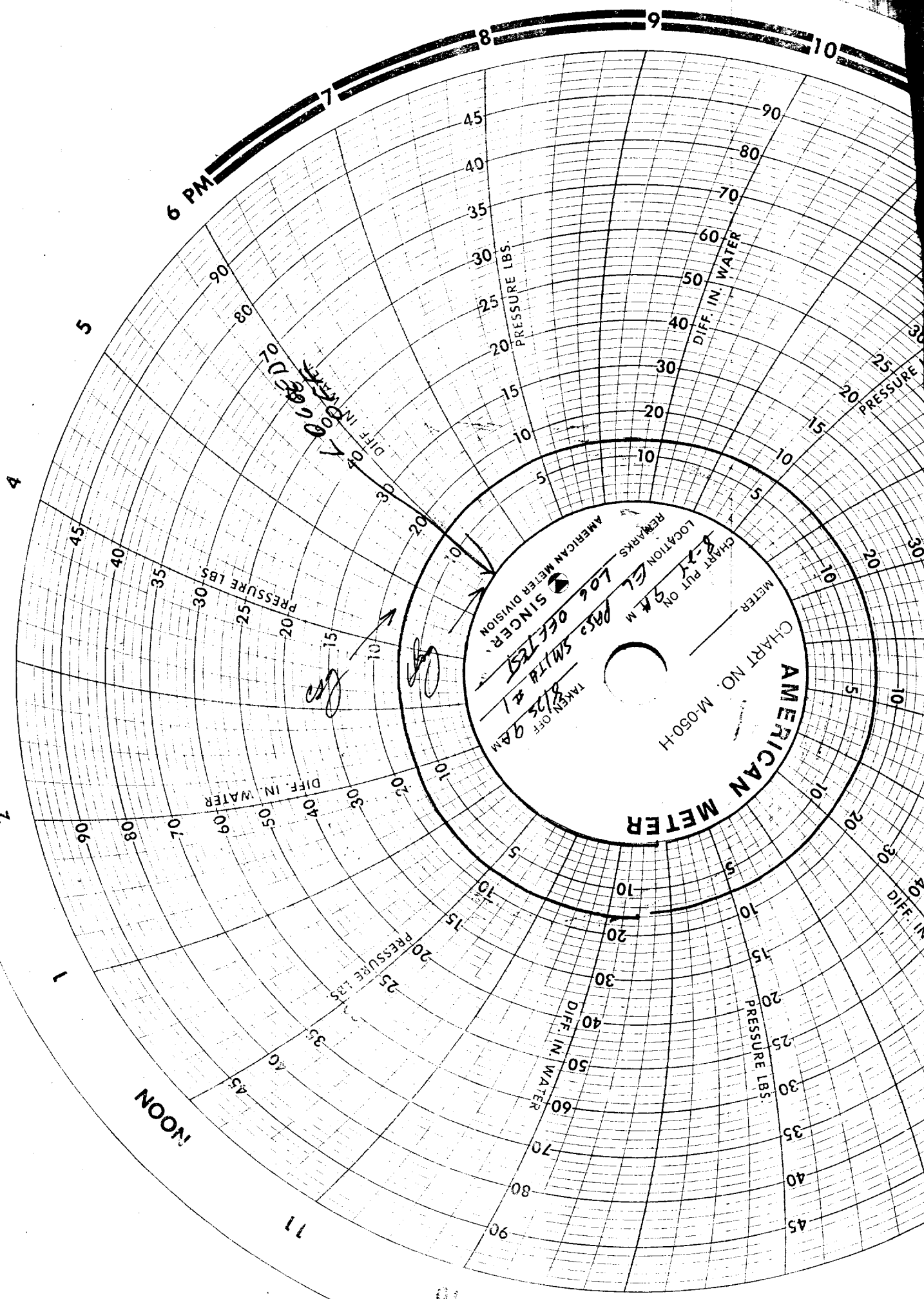
AMERICAN METER
ALABAMA 21
PROD. CO.
CHART NO. M-050-H

METER _____
CHART PUT ON 9A M
LOCATION SMITH
REMARKS LOG OFF TEST
TAKEN OFF 8-23 9A M
#1
SINGER
AMERICAN METER DIVISION

RECEIVED

SEP 14 1984

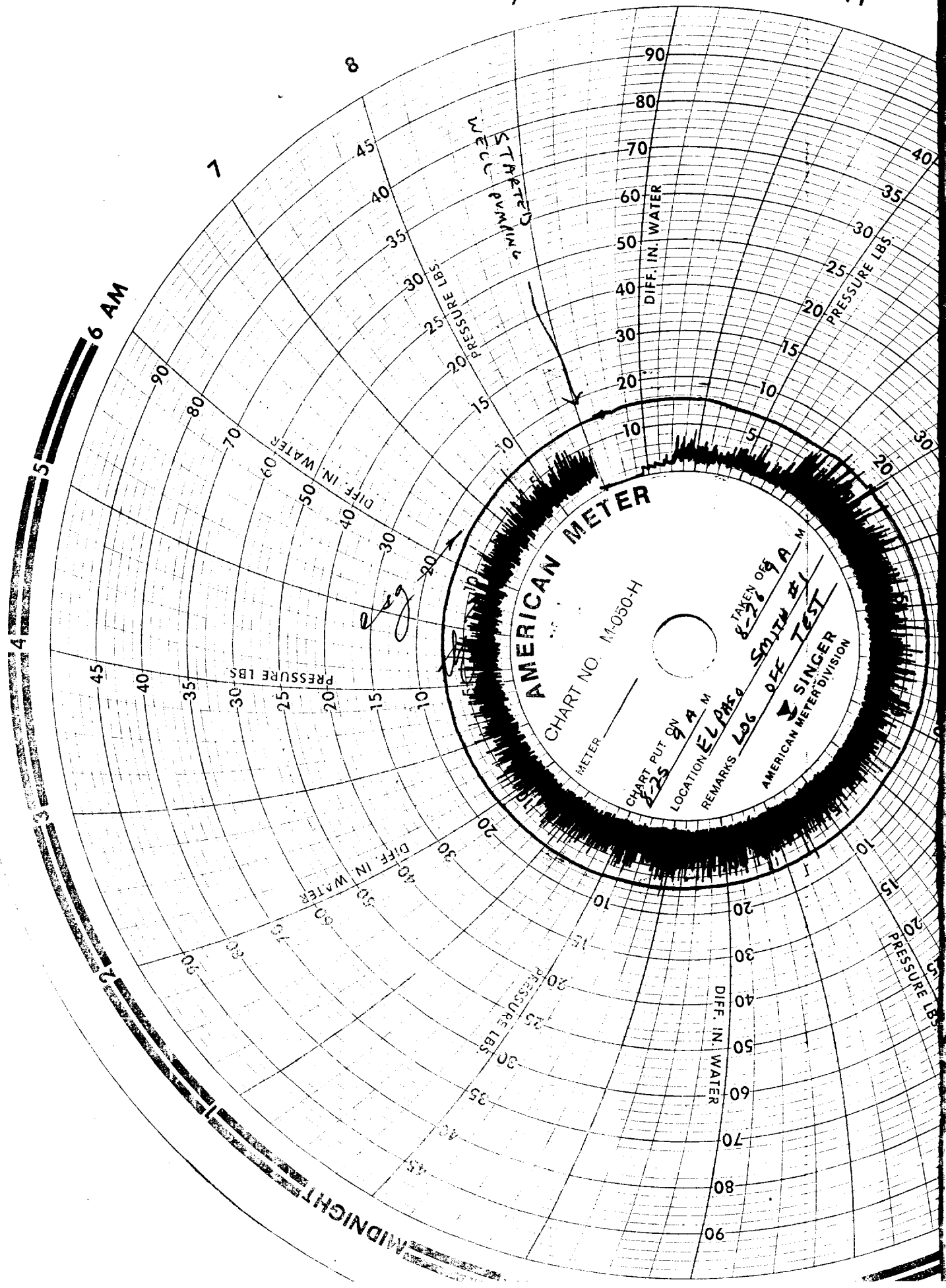
O.C.D.
HOBBS OFFICE



RECEIVED

SEP 14 1984

O.C.D.
HOBBS OFFICE

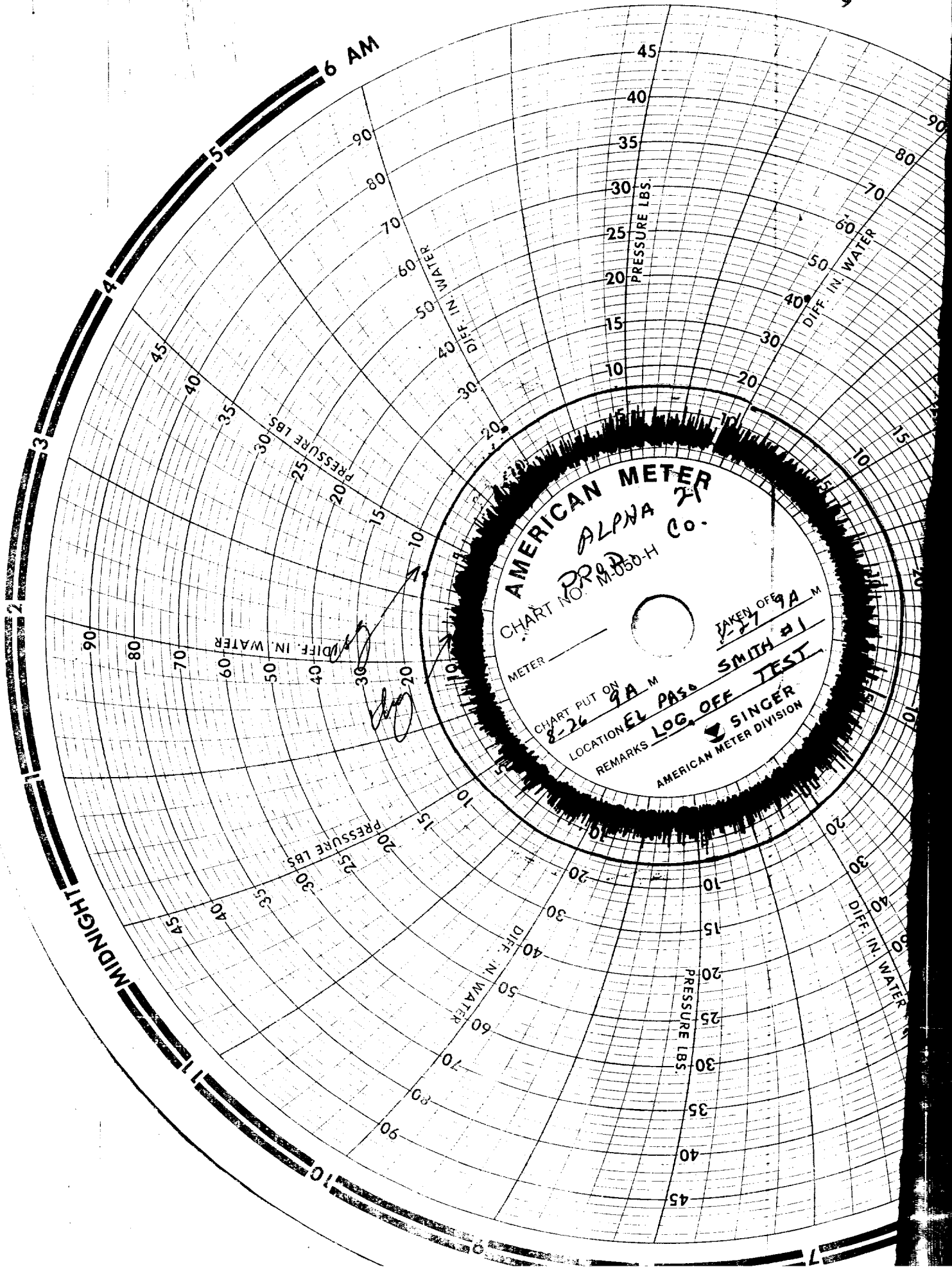


RECEIVED
SEP 14 1984
O.C.D.
HOBBS OFFICE

7

8

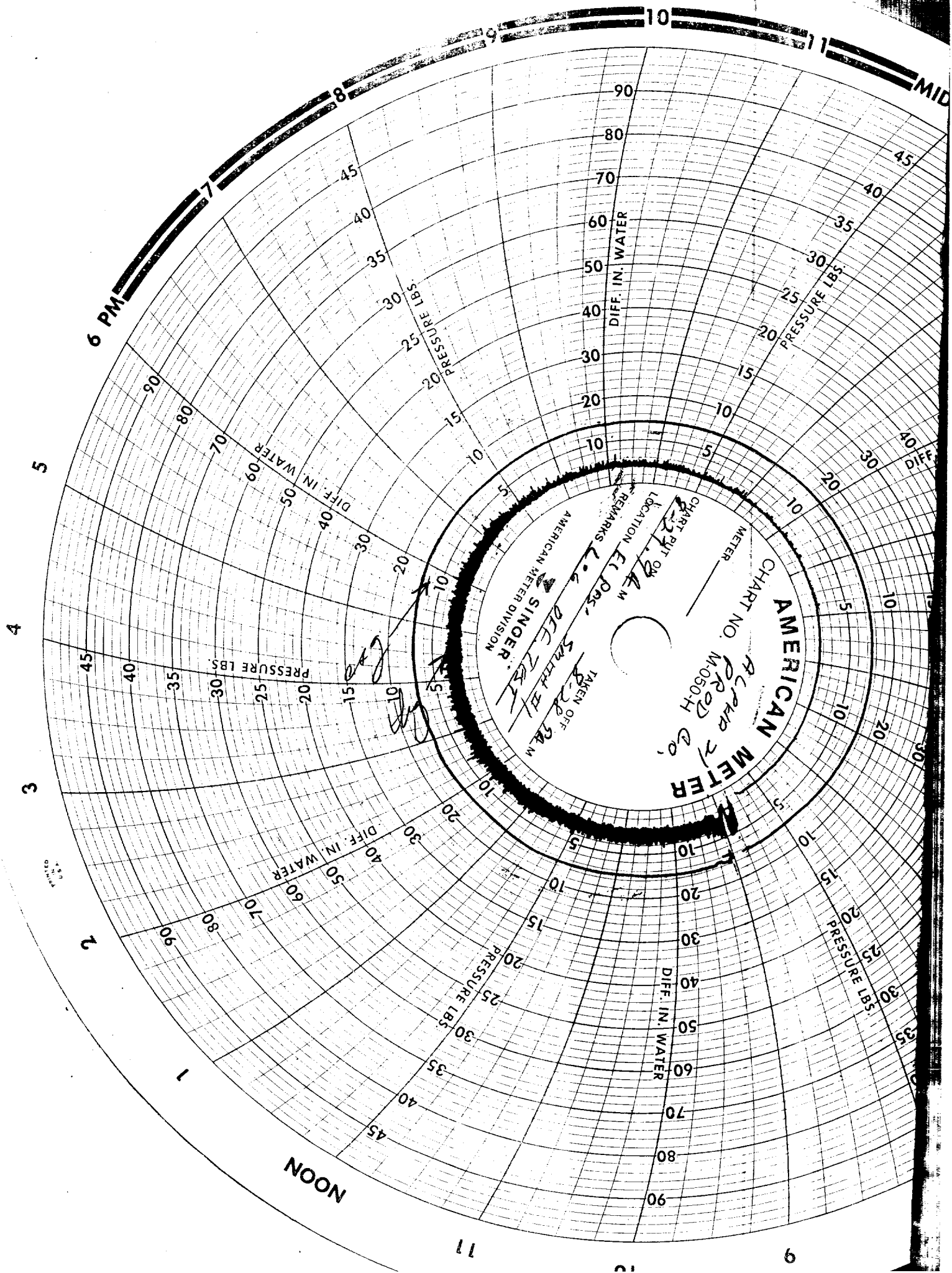
9



RECEIVED

SEP 14 1984

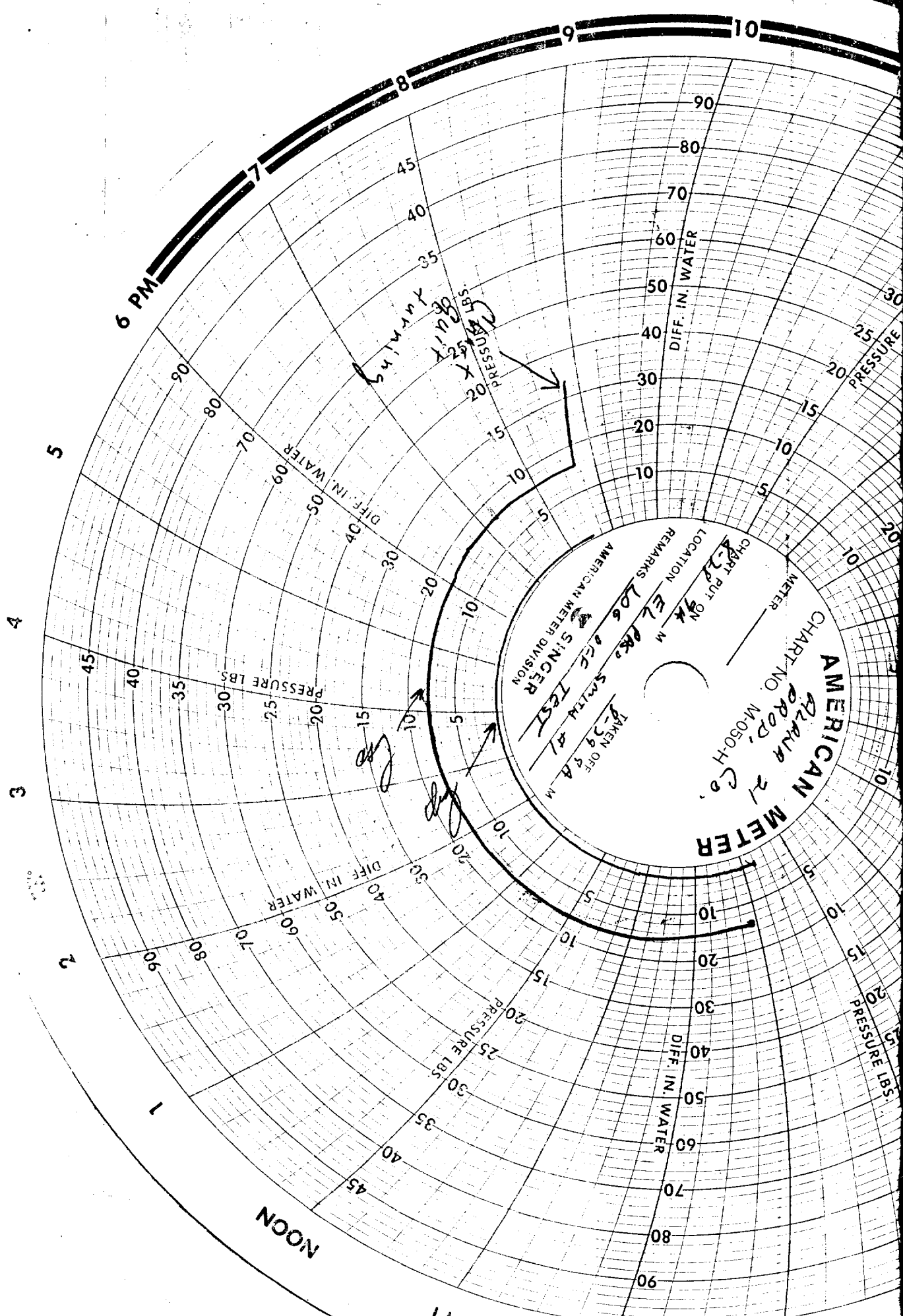
O.C.D.
HOBBS OFFICE



RECEIVED

SEP 14 1984

O.C.D.
HOBBS OFFICE



AMERICAN METER
CHART NO. M-050-H
ALAN 21
0000
CHART PUT ON
LOCATION
REMARKS
TAKEN OFF
DATE
SINGER
SMITH #1
TEST

Pressure
11/20
11/25
11/30
11/35
11/40
11/45
11/50
11/55
11/60
11/65
11/70
11/75
11/80
11/85
11/90

RECEIVED

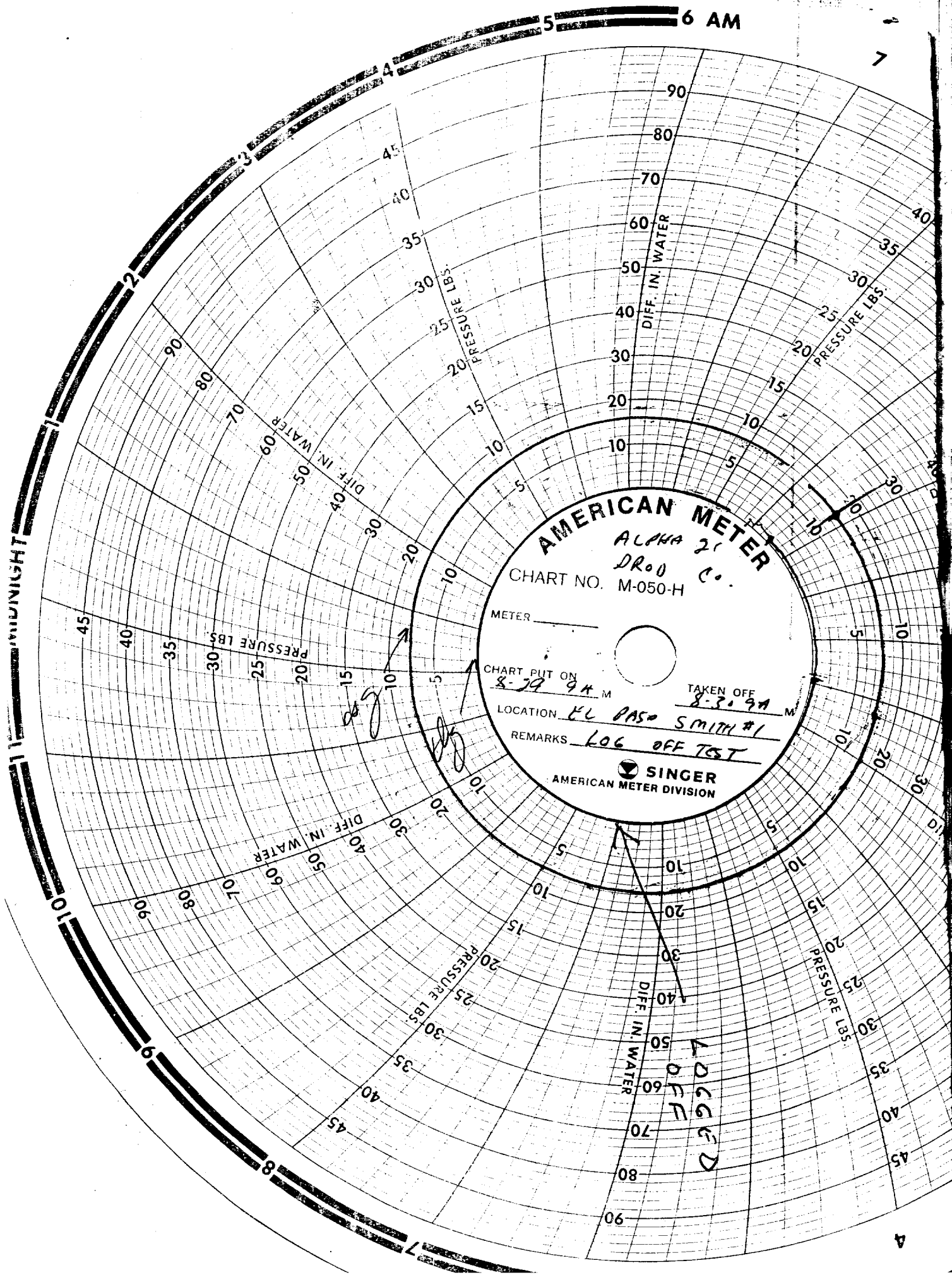
SEP 14 1984

O.C.D.
HOBBS OFFICE

11
MIDNIGHT

5 6 AM

7



4

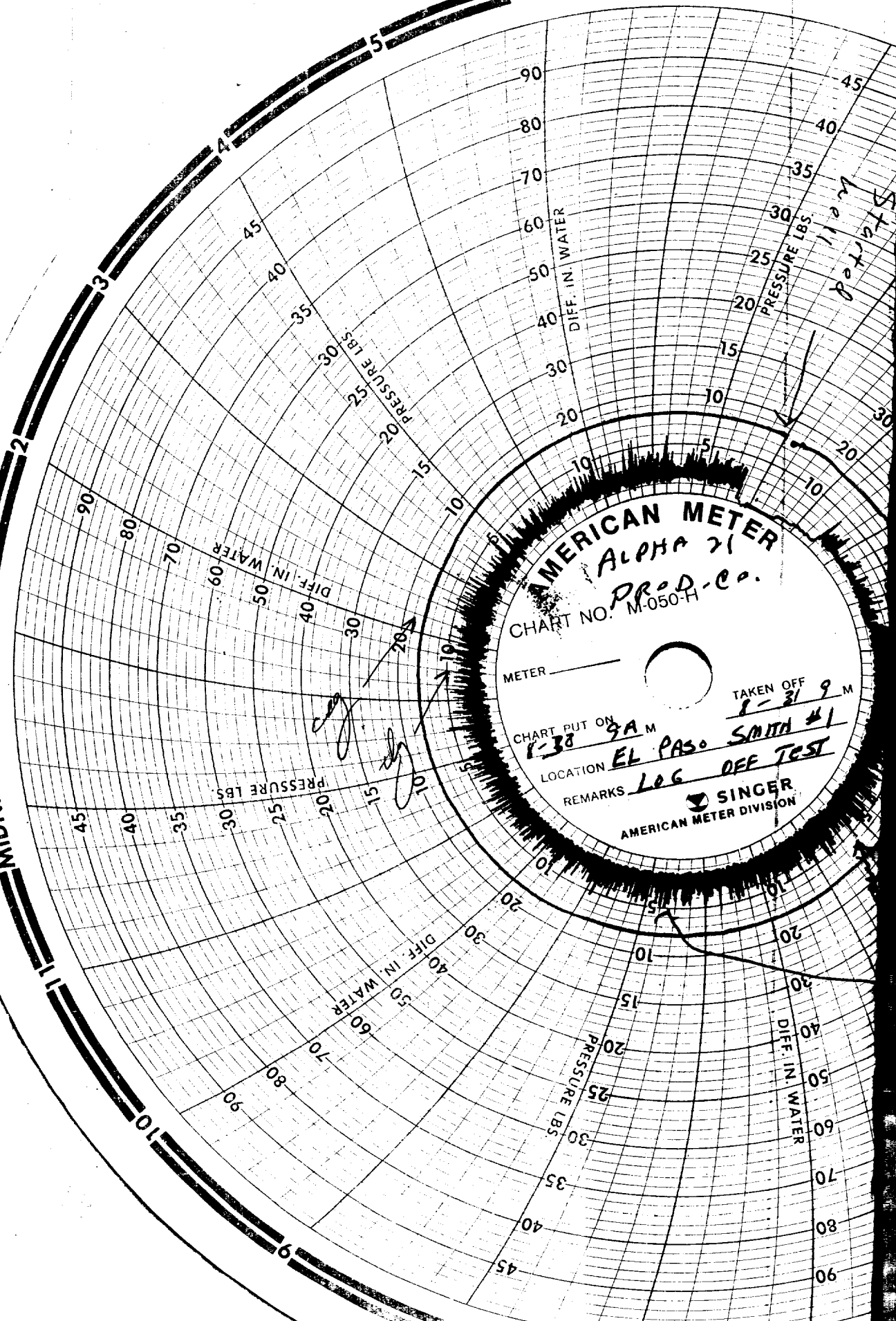
RECEIVED

SEP 14 1984

O.C.D.
HOBBS OFFICE

6 AM

MIDNIGHT



RECEIVED

SEP 14 1984

O.C.D.
HOBBS OFFICE

3 BLUE - CASINL 4

PRINTED
IN
U.S.A.

2

1

NOON

11

10

9

8

7

6 AM

5

4

3

2

1

MIDNIGHT

11

10

9

8

6 PM

5

2

1

NOON

11

10

9

8

7

6 AM

5

4

3

2

1

MIDNIGHT

11

10

9

8

6 PM

5

2

1

NOON

11

10

9

8

7

6 AM

5

4

3

2

1

MIDNIGHT

11

10

9

8

6 PM

5

2

1

NOON

11

10

9

8

7

6 AM

5

4

3

2

1

MIDNIGHT

11

10

9

8

6 PM

5

2

1

NOON

11

10

9

8

7

6 AM

5

4

3

2

1

MIDNIGHT

11

10

9

8

6 PM

5

2

1

NOON

11

10

9

8

7

6 AM

5

4

3

2

1

MIDNIGHT

11

10

9

8

6 PM

5

2

1

NOON

11

10

9

8

7

6 AM

5

4

3

2

1

MIDNIGHT

11

10

9

8

6 PM

5

2

1

NOON

11

10

9

8

7

6 AM

5

4

3

2

1

MIDNIGHT

11

10

9

8

6 PM

5

2

1

NOON

11

10

9

8

7

6 AM

5

4

3

2

1

MIDNIGHT

11

10

9

8

6 PM

5

2

1

NOON

11

10

9

8

7

6 AM

5

4

3

2

1

MIDNIGHT

11

10

9

8

6 PM

5

2

1

NOON

11

10

9

8

7

6 AM

5

4

3

2

1

MIDNIGHT

11

10

9

8

6 PM

5

2

1

NOON

11

10

9

8

7

6 AM

5

4

3

2

1

MIDNIGHT

11

10

9

8

6 PM

5

2

1

NOON

11

10

9

8

7

6 AM

5

4

3

2

1

MIDNIGHT

11

10

9

8

6 PM

5

2

1

NOON

11

10

9

8

7

6 AM

5

4

3

2

1

MIDNIGHT

11

10

9

8

6 PM

5

2

1

NOON

11

10

9

8

7

6 AM

5

4

3

2

1

MIDNIGHT

11

10

9

8

6 PM

5

2

1

NOON

11

10

9

8

7

6 AM

5

4

3

2

1

MIDNIGHT

11

10

9

8

6 PM

5

2

1

NOON

11

10

9

8

7

6 AM

5

4

3

2

1

MIDNIGHT

11

10

9

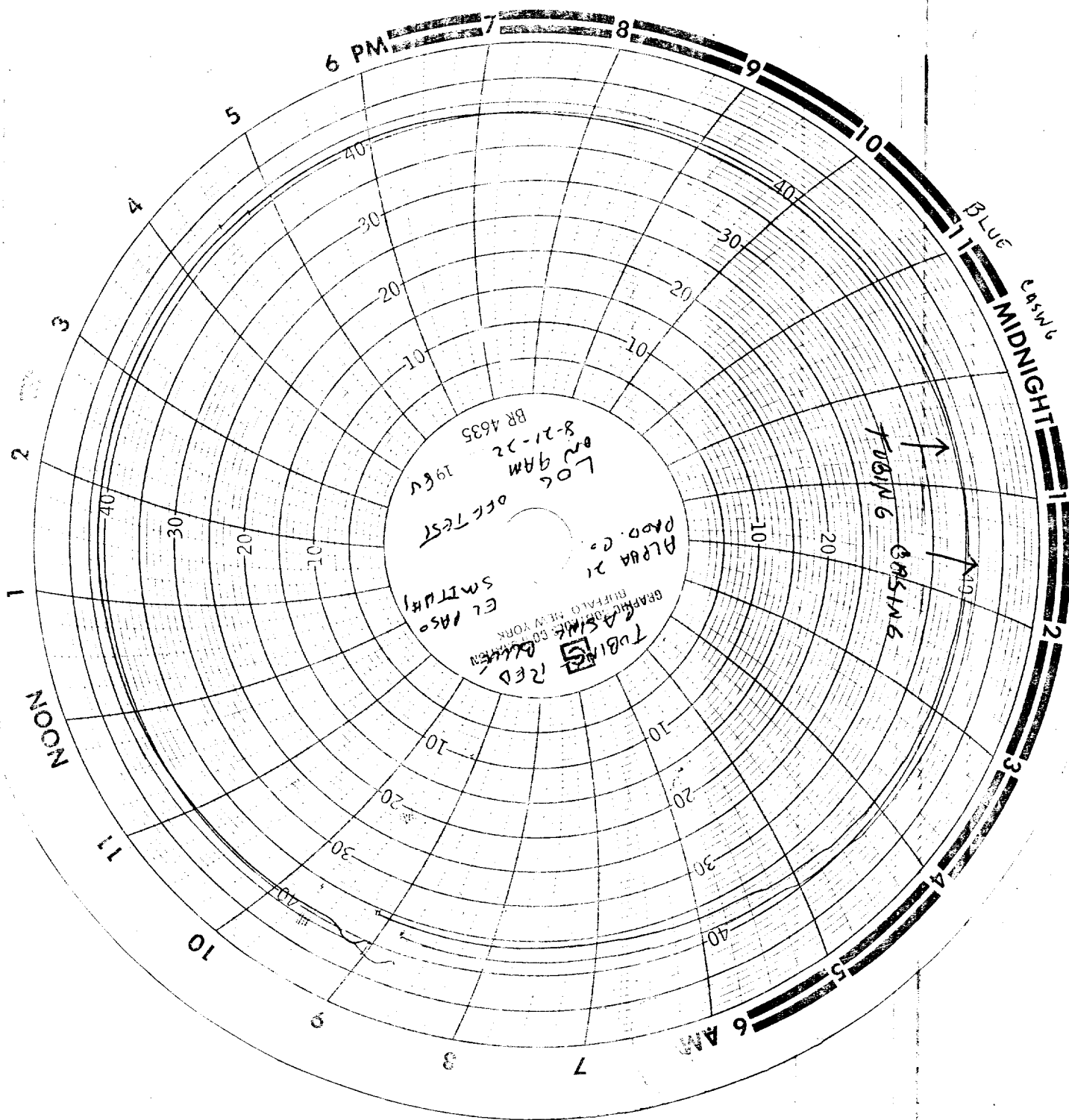
8

6 PM

5

2

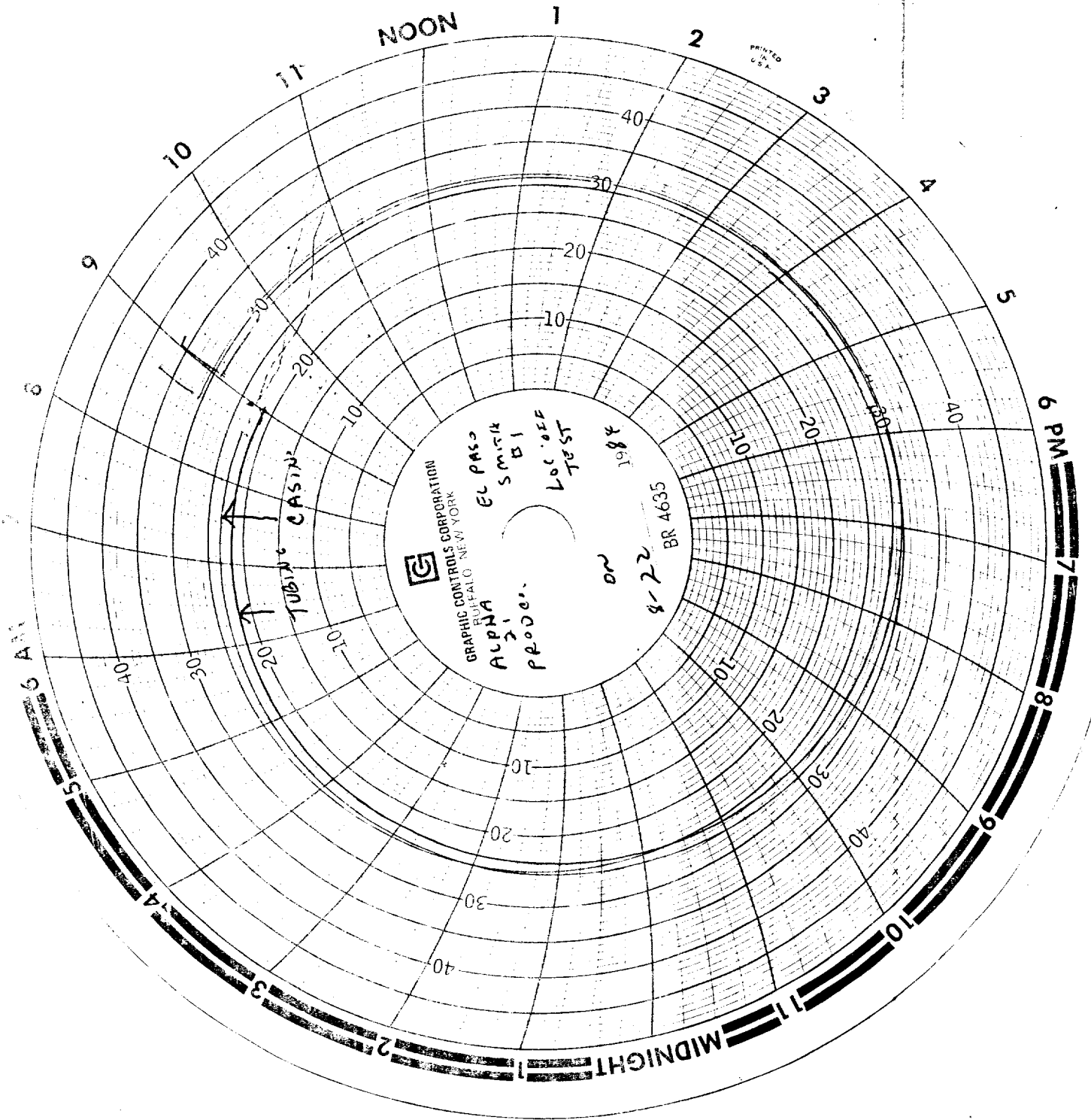
1



HOBBS OFFICE
O.C.D.

SEP 14 1984

RECEIVED

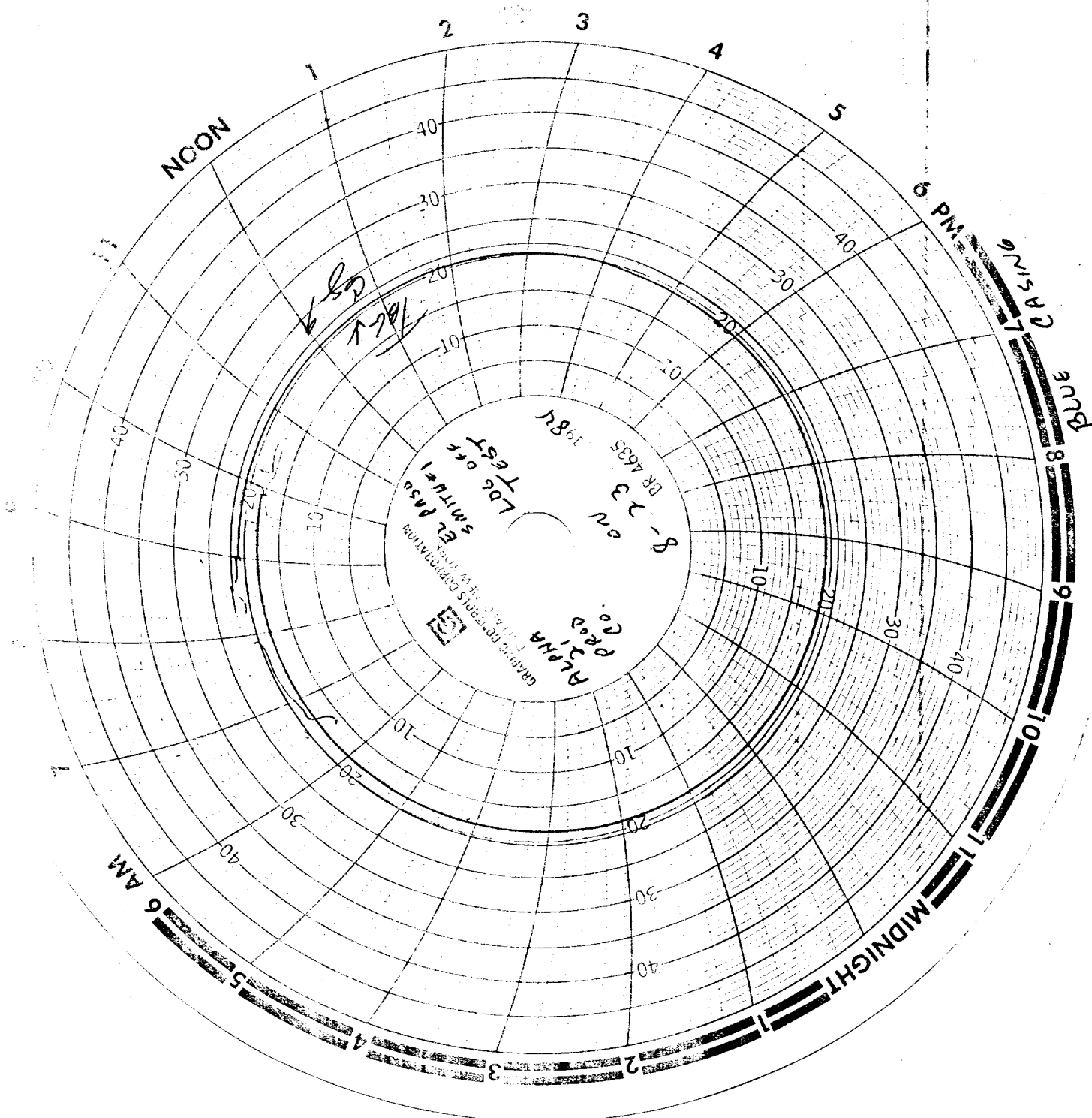


HOBBS OFFICE

O.C.D.

SEP 14 1984

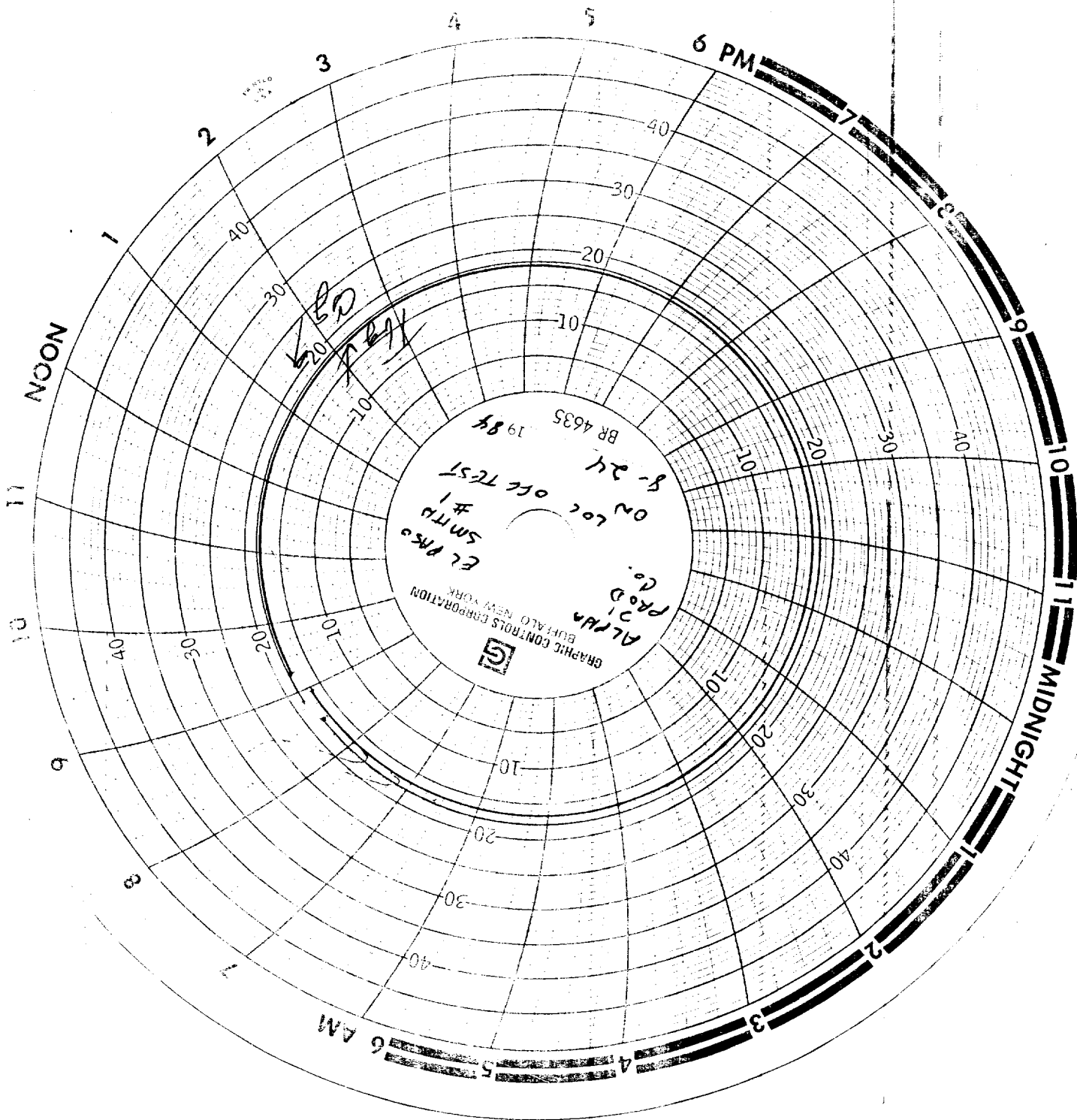
RECEIVED



O.C.D.
HOBBY OFFICE

SEP 14 1984

RECEIVED



HOBBS OFFICE
O.C.D.

SEP 14 1984

RECEIVED

PRINTED
IN U.S.A.

2

3

4

5

6 PM

8

9

10

11

MIDNIGHT

6 AM

NOON

1

10

20

10

20

30

40

50

60

70

80

90

100

110

120

130

140

150

160

170

180

190

200

210

220

230

240

250

260

270

280

290

300

310

320

330

340

350

360

370

380

390

400

410

420

430

440

450

460

470

480

490

500

510

520

530

540

550

560

570

580

590

600

610

620

630

640

650

660

670

680

690

700

710

720

730

740

750

760

770

780

790

800

810

820

830

840

850

860

870

880

890

900

910

920

930

940

950

960

970

980

990

1000

1010

1020

1030

1040

1050

1060

1070

1080

1090

1100

1110

1120

1130

1140

1150

1160

1170

1180

1190

1200

1210

1220

1230

1240

1250

1260

1270

1280

1290

1300

1310

1320

1330

1340

1350

1360

1370

1380

1390

1400

1410

1420

1430

1440

1450

1460

1470

1480

1490

1500

1510

1520

1530

1540

1550

1560

1570

1580

1590

1600

1610

1620

1630

1640

1650

1660

1670

1680

1690

1700

1710

1720

1730

1740

1750

1760

1770

1780

1790

1800

1810

1820

1830

1840

1850

1860

1870

1880

1890

1900

1910

1920

1930

1940

1950

1960

1970

1980

1990

2000

2010

2020

2030

2040

2050

2060

2070

2080

2090

2100

2110

2120

2130

2140

2150

2160

2170

2180

2190

2200

2210

2220

2230

2240

2250

2260

2270

2280

2290

2300

2310

2320

2330

2340

2350

2360

2370

2380

2390

2400

2410

2420

2430

2440

2450

2460

2470

2480

2490

2500

2510

2520

2530

2540

2550

2560

2570

2580

2590

2600

2610

2620

2630

2640

2650

2660

2670

2680

2690

2700

2710

2720

2730

2740

2750

2760

2770

2780

2790

2800

2810

2820

2830

2840

2850

2860

2870

2880

2890

2900

2910

2920

2930

2940

2950

2960

2970

2980

2990

3000

3010

3020

3030

3040

3050

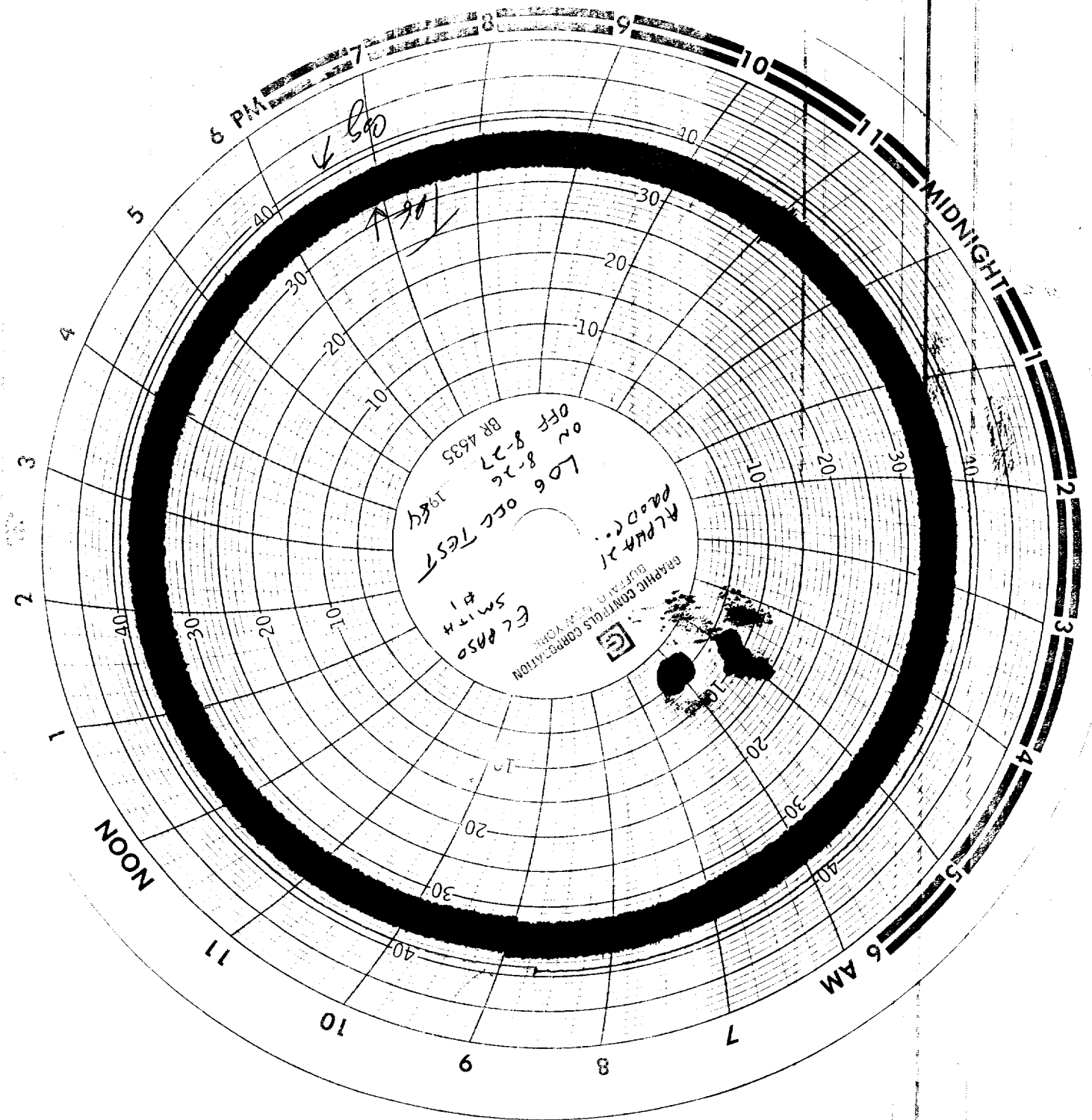
3060

3070</

HOBBS OFFICE
O.C.D.

SEP 14 1984

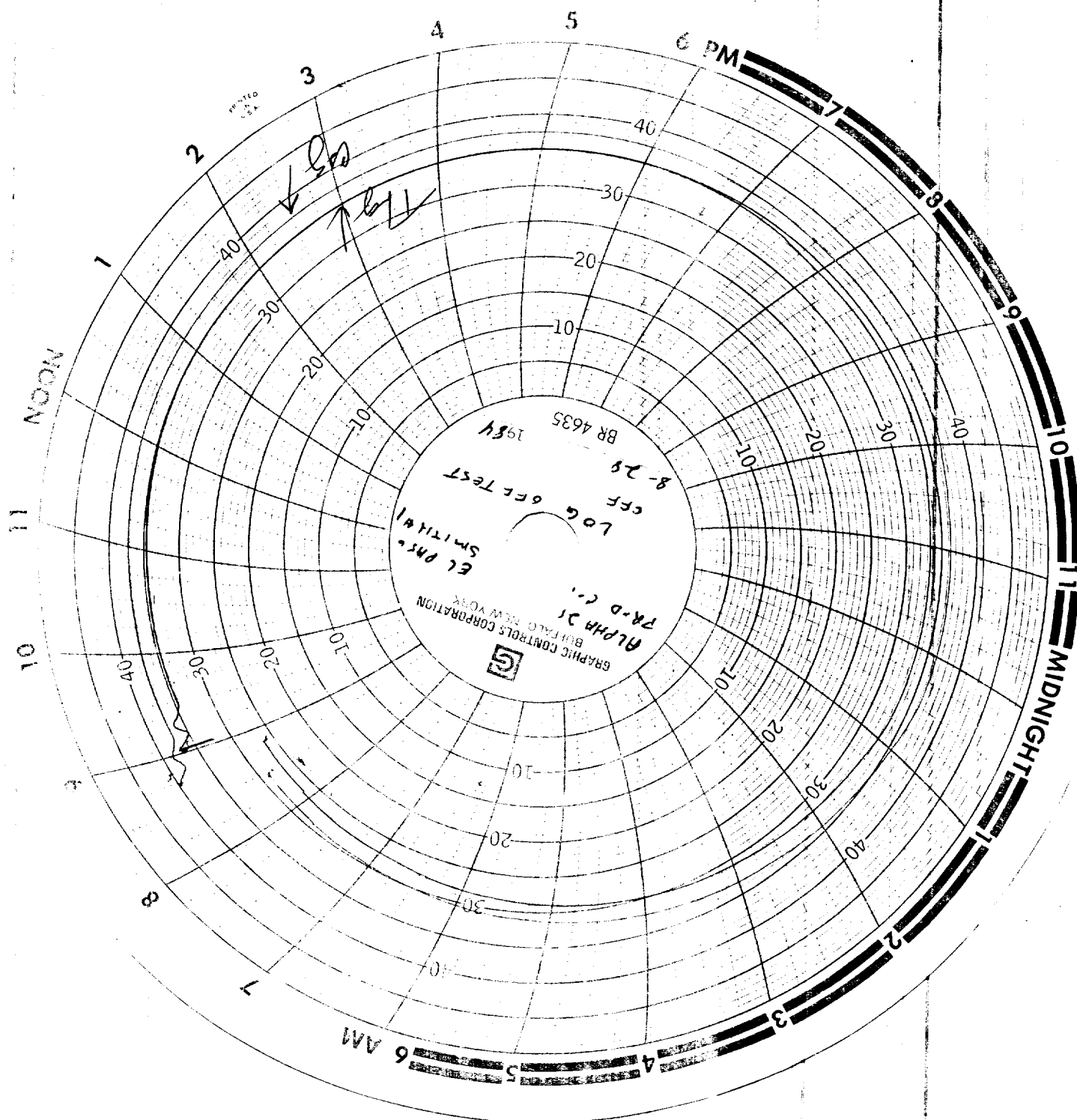
RECEIVED



O.C.D.
HOBBS OFFICE

SEP 14 1984

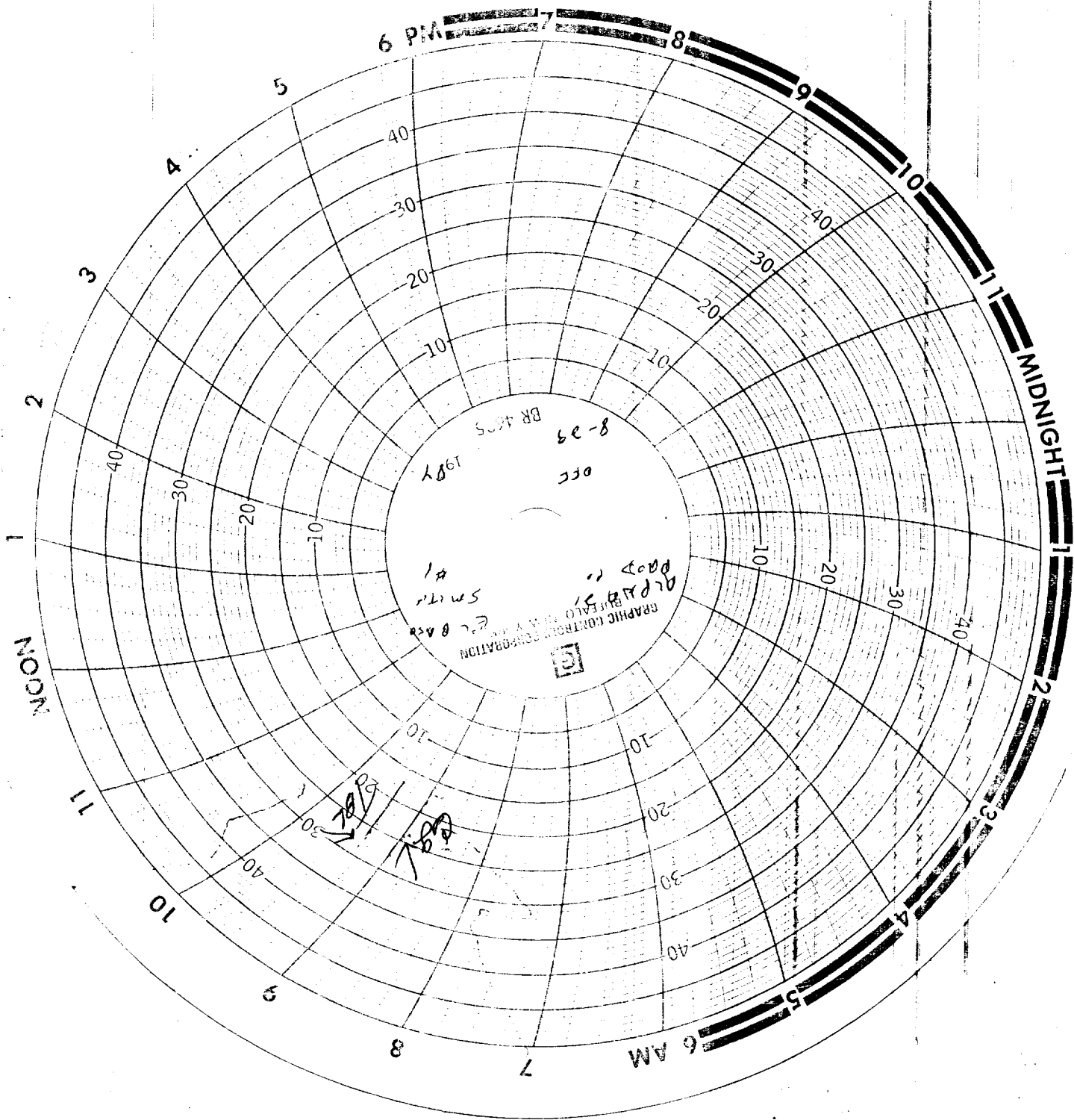
RECEIVED



HOBBS OFFICE
O.C.D.

SEP 14 1984

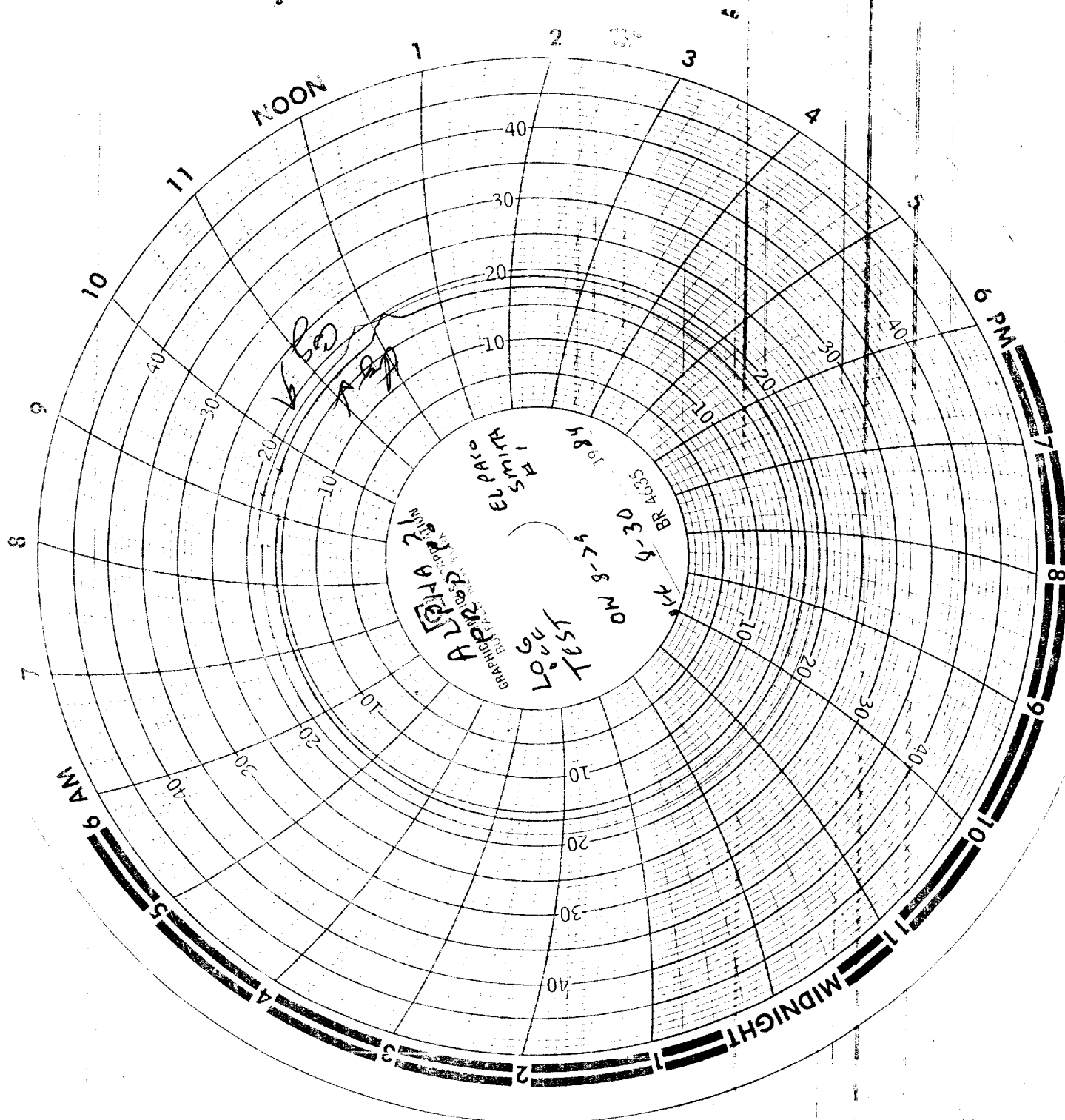
RECEIVED

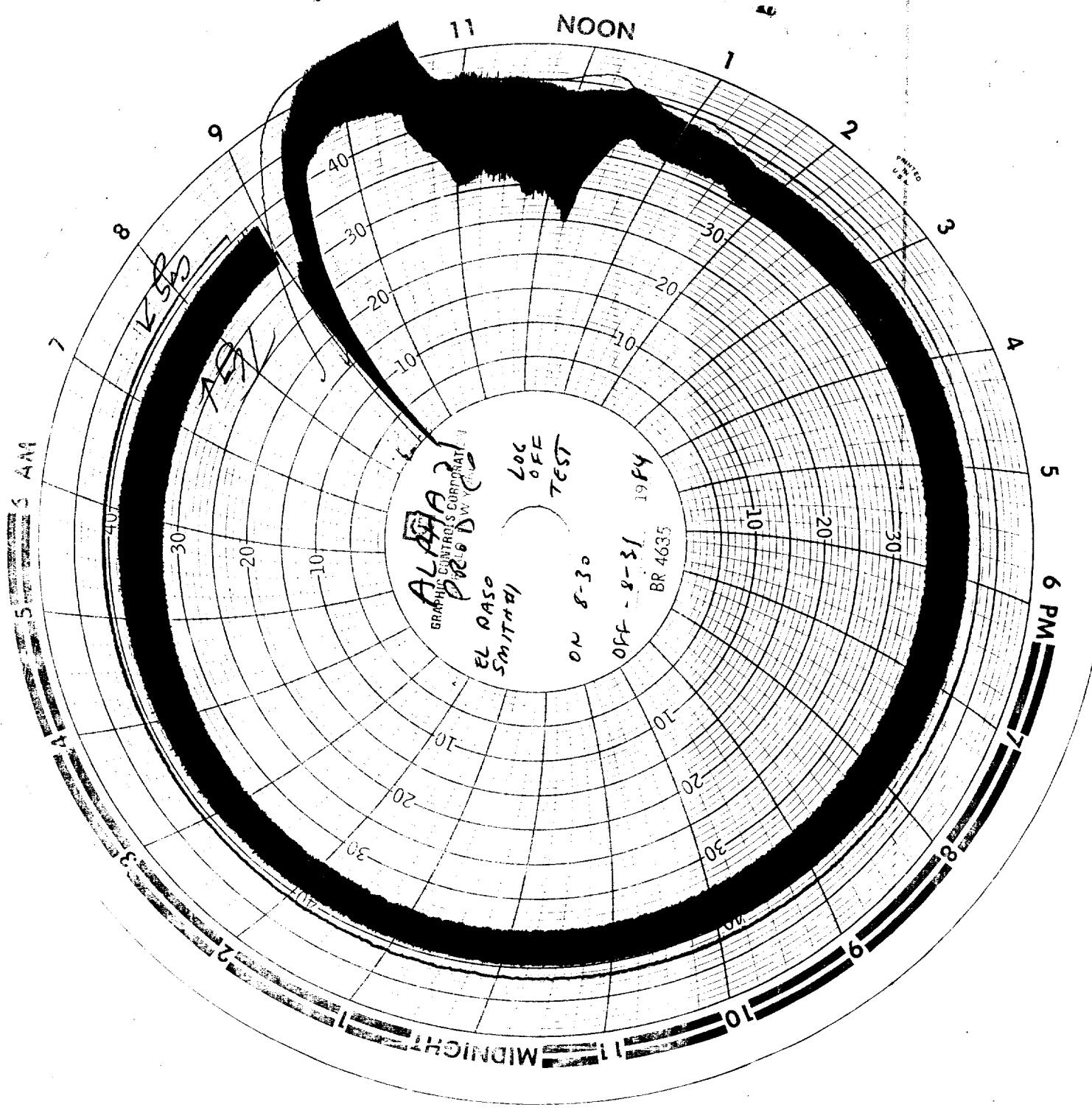


HOBBS OFFICE
O.C.D.

SEP 14 1984

RECEIVED





5 4 3 2 1

6 PM

MIDNIGHT



ALPHA TWENTY-ONE PRODUCTION COMPANY

POST OFFICE BOX 1206
JAL, NEW MEXICO 88252

505/395-3056

September 4, 1984

COST BREAKDOWN/EL PASO SMITH NO. 1 TEST

<u>DATE</u>	<u>CONSULTANT</u>	<u>ORIFICE METER</u>	<u>PRESSURE RECORDER</u>
8-20-84	\$ 250.00	\$37.50 for 5 days rental	\$ 15.00
8-21-84	250.00		15.00
8-22-84	250.00		15.00
8-23-84	250.00		15.00
8-24-84	250.00		15.00
8-25-84	250.00	3.50	15.00
8-26-84	250.00	3.50	15.00
8-27-84	250.00	3.50	15.00
8-28-84	250.00	3.50	15.00
8-29-84	250.00	3.50	15.00
8-30-84	250.00	3.50	15.00
8-31-84	250.00	3.50	15.00

TOTALS

Consultant	\$ 3000.00
Office Meter	62.00
Pressure Recorder	180.00
GRANT TOTAL	\$ 3242.00

SEP 14 1984
O.C.P.
HOBBS OFFICE

Initials	Date
MM	7/12/94
Prepared by	
Approved by	

EC PRO SMITH #1
GAS SALES X LEASE OPERATING EXPENSE
JAN 1992 to MAY 1994

	1	2	3	4	5	6	7	8	9	10	11
			GAS	LEASE	NET						
			SALES	EXPENSE	INCOME						
1-82			-	646	(646)						
2-82			1177	2859	8919						
3-82			2185	3738	12417						
4-82			1321	913	12308						
5-82			-	3413	(3413)						
6-82			5581	5931	4650						
7-82			6180	4200	3520						
8-82			4081	1079	3702						
9-82			(20100)	435	(20635)						
10-82			80	516	(436)						
11-82			222	393	(171)						
12-82			239	5892	(5653)						
1-83			1405	589	1816						
2-83			913	127	346						
3-83			233	363	(130)						
4-83			43	448	(405)						
5-83			251	4762	(4511)						
6-83			5316	4928	448						
7-83			1054	3243	4811						
8-83			12359	806	11553						
9-83			10297	678	10169						
10-83			4624	644	4920						
11-83			2474	3187	(713)						
12-83			10780	3492	7244						
1-84			7595	1519	6063						
2-84			7005	863	7532						
3-84			1590	734	966						
4-84			926	176	9070						

Collection By Receivable

RECEIVED

SEP 14 1984

O.C.D.
HOBBS OFFICE

Initials	Date
<i>[Signature]</i>	7/1/2014
Prepared by	Approved by

EC 1100 SMITH 71
ON SALS & LEASE OPERATING EXPENSE
JAN 1982 to May 1984