

COUNTY **LEA** FIELD **Jalmat** STATE **NM**
 OPR **HUSKY OIL CO.** API **30-025-26665**
 NO **5** LEASE **North Shore Woolworth** MAP
 Sec **33, T24S, R37E** COORD
 730 FNL, 1980 FWL of Sec **7-4-27 NM**
 4 mi NE/Jal SPD **3-27-80** LMP **6-12-80**

CSC	WELL CLASS: INIT D FIN DG USE CODE			
	FORMATION	DATUM	FORMATION	DATUM
8 5/8-1203-600 sx				
5 1/2-3598-1025 sx				
2 3/8-3069				
	TD 3600 (QUEN)		PBD 3136	

IP (Yates-Seven Rivers) Peris 3025-3204 F 50 MCFGPD. Pot based on 24 hr test thru 16/64 chk. GOR (NR), gty (NR), CP 150, TP 90

CONTR OPRSELEV 3258 GL, 3268 KB PD 3600 RT

F.R. 2-4-80
 (Yates-Seven Rivers)
 7-26-80 AMEND WELL NUMBER: Formerly reported as 3
 4-21-80 TD 3600; WOCT
 9-15-80 TD 3600; PBD 3136; Complete
 Peris (Yates-Seven Rivers) @ 3025, 3026, 3027, 3028, 3031, 3033, 3046, 3054, 3056, 3058, 3067, 3069, 3071, 3073, 3075, 3077, 3141, 3155, 3169, 3204 w/1 SPI
 Acid (3025-3204) 4000 gals (15% MCA)
 Frac (3025-3204) fluid + 60,000 sd
 LOG TOPS: Yates 2876, Seven Rivers 2942, Queen 3496
 LOGS RUN: DILL, CNL, FDC
 BHT 94 deg
 7-26-80 TEMPORARY COMPLETION ISSUED
 9-20-80 RE-ISSUE OF SUSPENDED COMPLETION

7-4-27 NM
 IC 30-025-70062-80

NEW MEXICO OIL CONSERVATION COMM
WELL LOCATION AND ACREAGE DEDICATION PLAT

Form O-102
Superior (C)
Effective 1-1-80

All distances must be from the outer boundaries of the Section

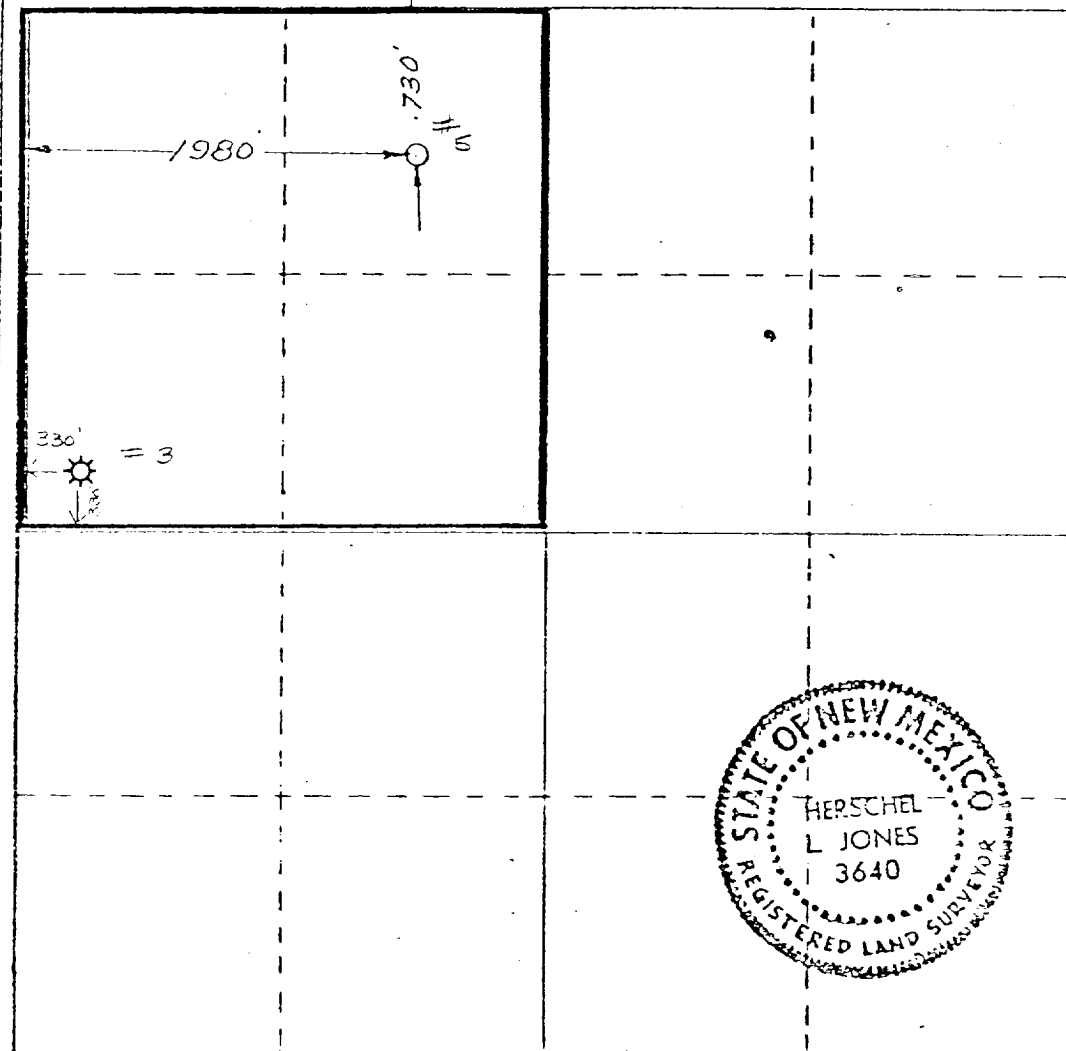
Operator HUSKY OIL COMPANY of Delaware			Lease North Shore Woolworth		Well No. 45
Unit Letter "C"	Section 33	Township 24 South	Range 37 East	County Lea County	
Actual Footage Location of Well: 730 feet from the North line and 1980 feet from the West line					
Ground Level Elev. 3259	Producing Formation Yates - Seven Rivers		Pool JALMAT	Dedicated Acreage: 160	

1. Outline the acreage dedicated to the subject well by colored pencil or hatchure marks on the plat below.
2. If more than one lease is dedicated to the well, outline each and identify the ownership thereof (both as to working interest and royalty).
3. If more than one lease of different ownership is dedicated to the well, have the interests of all owners been consolidated by communitization, unitization, force-pooling, etc?

☒ Yes ☐ No If answer is "yes," type of consolidation **COMMUNITIZED**

If answer is "no," list the owners and tract descriptions which have actually been consolidated. (Use reverse side of this form if necessary.)

No allowable will be assigned to the well until all interests have been consolidated (by communitization, unitization, forced-pooling, or otherwise) or until a non-standard unit, eliminating such interests, has been approved by the Commission.



CERTIFICATION

I hereby certify that the information contained herein is true and complete to the best of my knowledge and belief.

Gerald D. Gentry
Name
Position **Drilling Engineer**
Company **Husky Oil Company of Del.**
Date **January 23, 1980**

I hereby certify that the well location shown on this plat was plotted from the notes of actual surveys made by me or under my supervision, and that the same is true and correct to the best of my knowledge and belief.

Surveyed **January 10, 1980**
Registered Professional Engineer and/or Land Surveyor
Herschel L Jones
Certificate No. **3640**