

ILLEGIBLE

NEW MEXICO OIL CONSERVATION COMMISSION WELL LOCATION AND ACREAGE DEDICATION PLAT

Form No. 1
Superseded 6-12-8
Revised 1-1-85

All distances must be from the outer boundaries of the Section

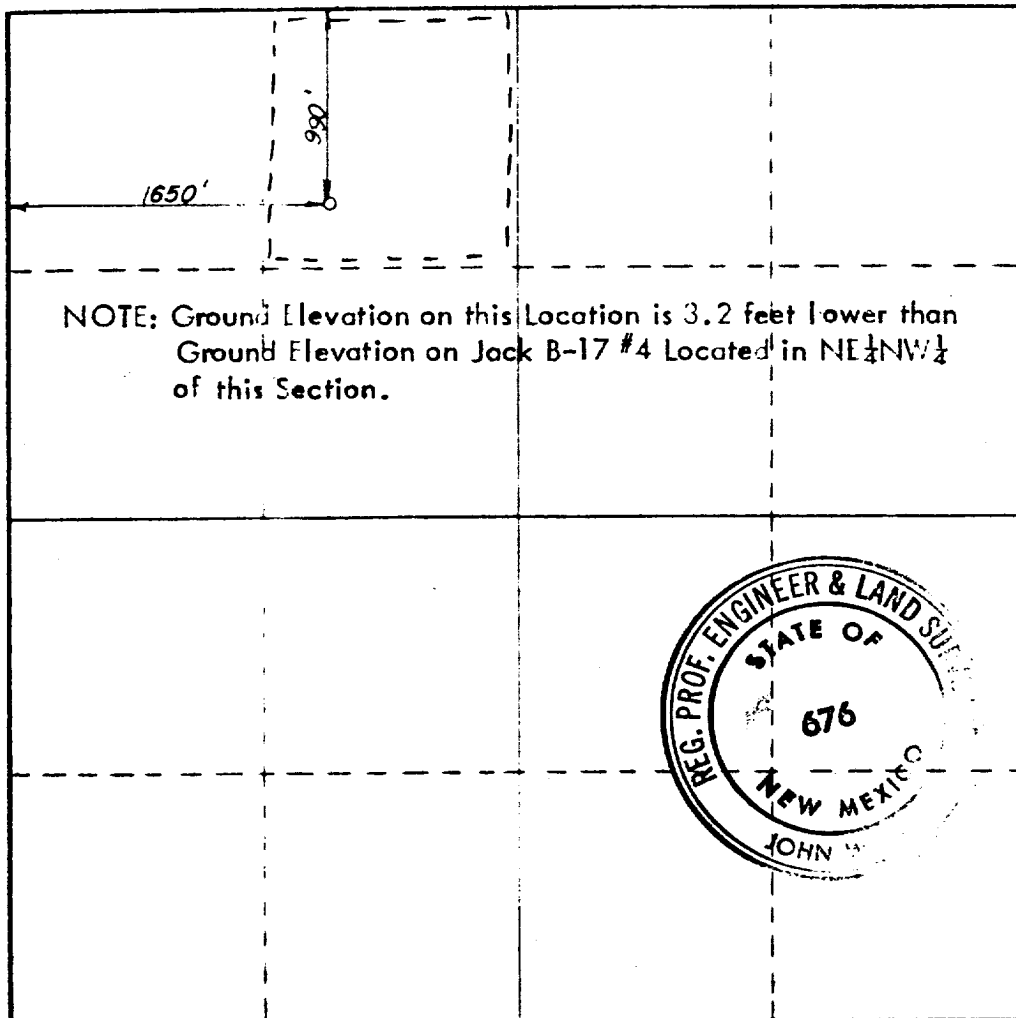
Operator CONOCO, Inc.		Lease Jack B-17		Acreage 7	
Unit Letter C	Section 17	Township 24 South	Range 37 East	County Lea	
Actual Footage Location of Well: 990 feet from the North line and 1650 feet from the West line					
Ground Level Elev 32858	Producing Formation Queen		Proven Langlie Mattix Queen		Estimated Acreage 40

1. Outline the acreage dedicated to the subject well by colored pencil or hatchure marks on the plat below.
2. If more than one lease is dedicated to the well, outline each and identify the ownership thereof (both as to working interest and royalty)
3. If more than one lease of different ownership is dedicated to the well, have the interests of all owners been consolidated by communitization, unitization, force-pooling, etc?

☐ Yes ☐ No If answer is "yes," type of consolidation _____

If answer is "no," list the owners and tract descriptions which have actually been consolidated (Use reverse side of this form if necessary) _____

No allowable will be assigned to the well until all interests have been consolidated (by communitization, unitization, forced-pooling, or otherwise) or until a non-standard unit, eliminating such interests, has been approved by the Commission.



CERTIFICATION

I hereby certify that the information contained herein is true and complete to the best of my knowledge and belief

Name John A. Butterfield
Position Administrative Supervisor
Company Conoco Inc.
Date 12/27/79

I hereby certify that the well location shown on this plat was plotted from field notes of actual surveys made by me or under my supervision, and that the same is true and correct to the best of my knowledge and belief.

Date Surveyed December 15, 1979
Registered Professional Engineer and/or Land Surveyor

John W. West
Certificate No. John W. West 676
Ronald J. Eidson 3239



FEB 5 1980