

**NEW MEXICO OIL CONSERVATION COMMISSION
WELL LOCATION AND ACREAGE DEDICATION PLAT**

Form C-128
Supersedes C-128
Effective 1-1-55

All distances must be from the outer boundaries of the Section

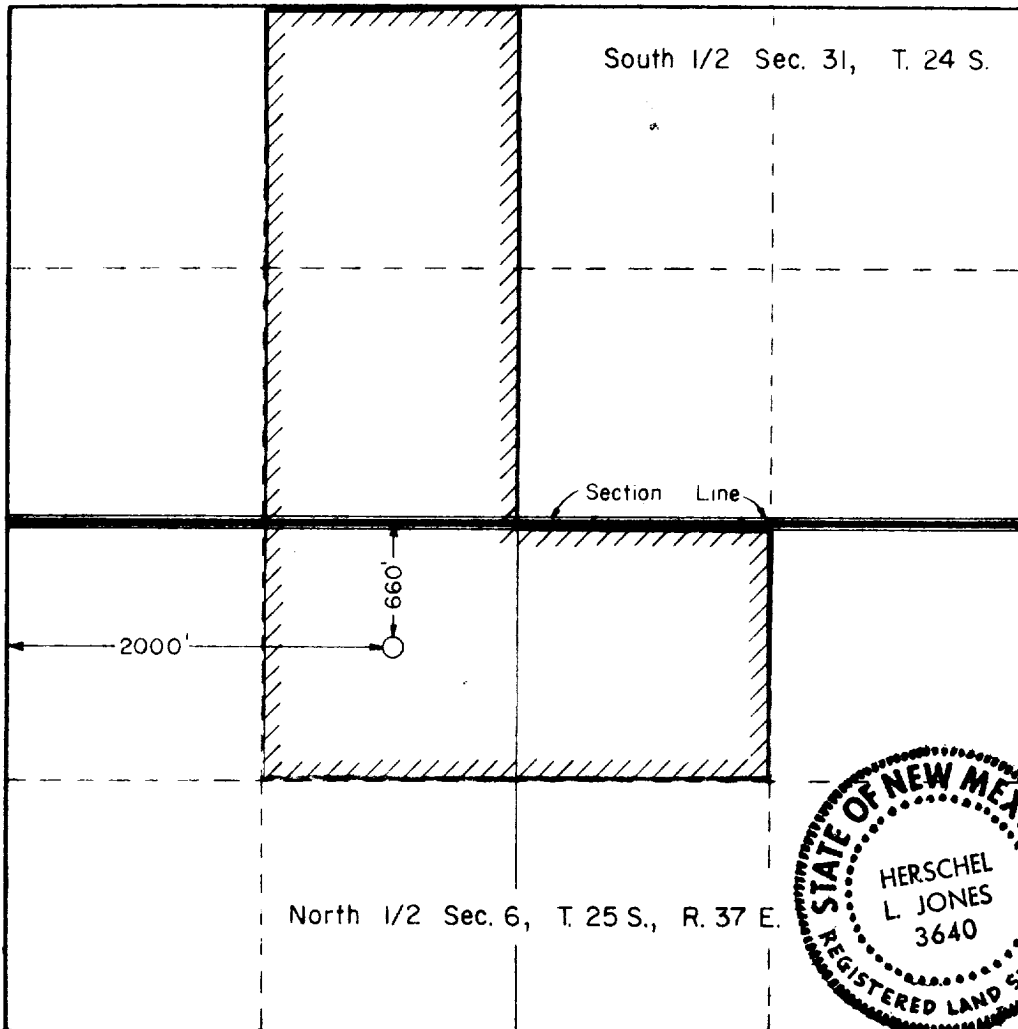
Operator GETTY OIL COMPANY			Lease JW Sherrell		Well No. 10
Unit Letter 'C'	Section 6	Township 25 South	Range 37 East	County Lea	
Actual Footage Location of Well: 660 feet from the North line and 2000 feet from the West line					
Ground Level Elev. 3236	Producing Formation Yates		Pool Jalmat (Gas)	Dedicated Acreage: 160 Acres	

1. Outline the acreage dedicated to the subject well by colored pencil or hatchure marks on the plat below.
2. If more than one lease is dedicated to the well, outline each and identify the ownership thereof (both as to working interest and royalty).
3. If more than one lease of different ownership is dedicated to the well, have the interests of all owners been consolidated by communitization, unitization, force-pooling, etc?

☐ Yes ☐ No If answer is "yes," type of consolidation _____

If answer is "no," list the owners and tract descriptions which have actually been consolidated. (Use reverse side of this form if necessary.) _____

No allowable will be assigned to the well until all interests have been consolidated (by communitization, unitization, forced-pooling, or otherwise) or until a non-standard unit, eliminating such interests, has been approved by the Commission.



CERTIFICATION

I hereby certify that the information contained herein is true and complete to the best of my knowledge and belief

Dale R. Crockett
Name

Dale R. Crockett

Position
Area Superintendent

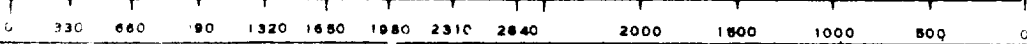
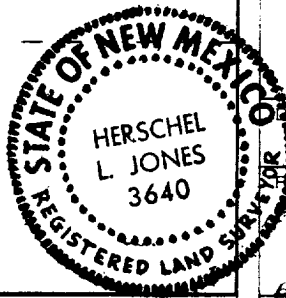
Company
Getty Oil Company

Date
2-19-80

I hereby certify that the well location shown on this plat was plotted from field notes of actual surveys made by me or under my supervision, and that the same is true and correct to the best of my knowledge and belief.

Date Surveyed
November 26, 1979
Registered Professional Engineer
and/or Land Surveyor

Herschel L. Jones
Certificate No. **3640**



016 CONSERVATION DIV

FEB 22 '80

RECEIVED