

NEW MEXICO OIL CONSERVATION COMMISSION
WELL LOCATION AND ACREAGE DEDICATION PLAT

Form C-102
Supersedes C-128
Effective 1-1-65

All distances must be from the outer boundaries of the Section.

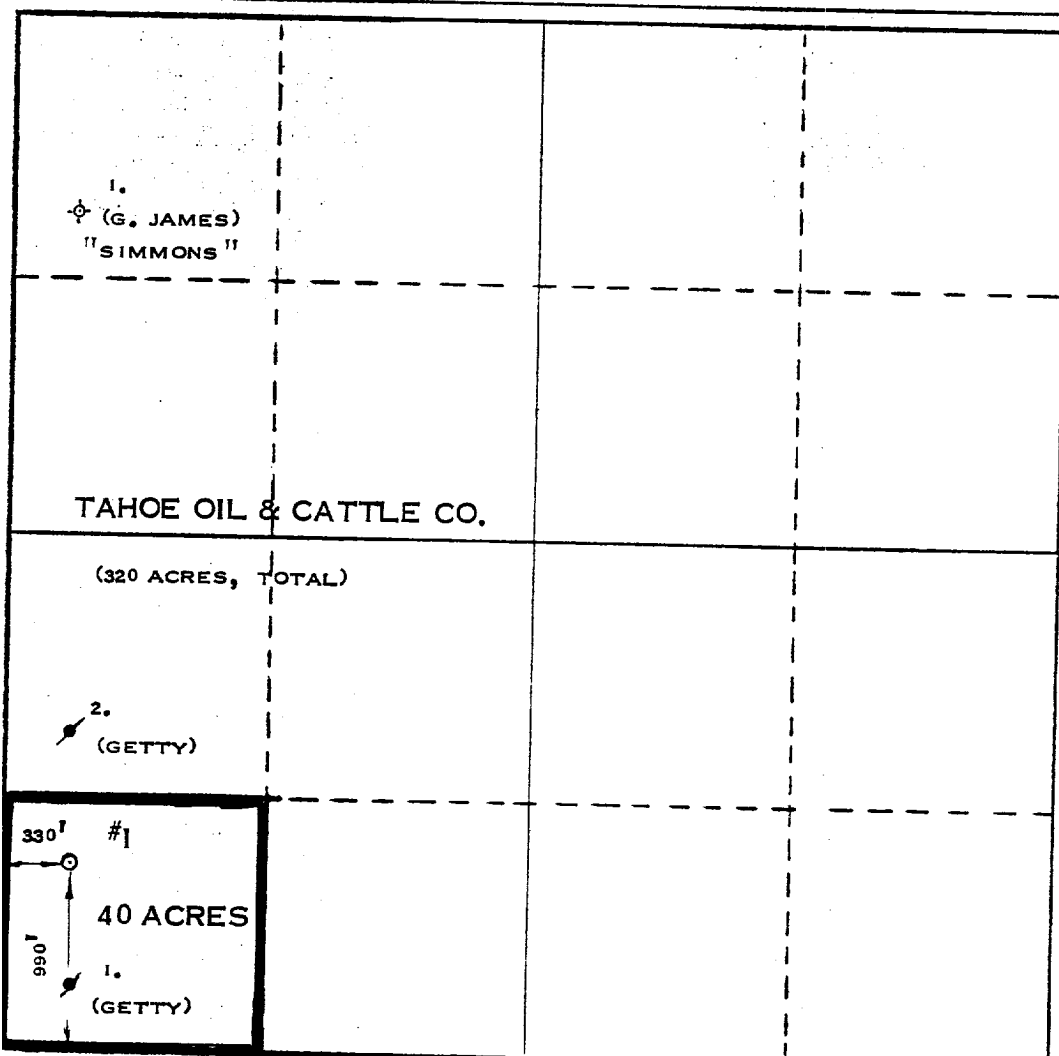
| | | | | | |
|--|-------------------------------------|-------------------------|-------------------------------|----------------------|---------------------------------------|
| Operator TAHOE OIL & CATTLE CO. | | | Lease TONTO | | Well No. 1 |
| Unit Letter "M" | Section 25 | Township 24-S | Range 37-E | County LEA | |
| Actual Footage Location of Well: 330 feet from the WEST line and 990 feet from the SOUTH line | | | | | |
| Ground Level Elev. 3149 | Producing Formation QUEEN | | Pool LANGLIE MATTIX | | Dedicated Acreage: 40 Acres |

1. Outline the acreage dedicated to the subject well by colored pencil or hachure marks on the plat below.
2. If more than one lease is dedicated to the well, outline each and identify the ownership thereof (both as to working interest and royalty).
3. If more than one lease of different ownership is dedicated to the well, have the interests of all owners been consolidated by communitization, unitization, force-pooling, etc?

☐ Yes ☐ No If answer is "yes," type of consolidation _____

If answer is "no," list the owners and tract descriptions which have actually been consolidated. (Use reverse side of this form if necessary.) _____

No allowable will be assigned to the well until all interests have been consolidated (by communitization, unitization, forced-pooling, or otherwise) or until a non-standard unit, eliminating such interests, has been approved by the Commission.



CERTIFICATION

I hereby certify that the information contained herein is true and complete to the best of my knowledge and belief.

Name *J. L. Green*
Position *Petroleum Engineer*

Company
Tahoe Oil & Cattle Co.

Date
May 22, 1980

I hereby certify that the well location shown on this plat was plotted from field notes of actual surveys made by me or under my supervision, and that the same is true and correct to the best of my knowledge and belief.

Date Surveyed
MAY 19, 1980

Registered Professional Engineer
and/or Land Surveyor

Max A. Schumann, Jr.
MAX A. SCHUMANN, JR.

Certificate No.

1510

330 660 990 1320 1650 1980 2310 2640 2970 3300 3630