

NEW MEXICO OIL CONSERVATION COMMISSION
WELL LOCATION AND ACREAGE DEDICATION PLAT

Form C-102
Supersedes C-128
Effective 1-1-65

All distances must be from the outer boundaries of the Section

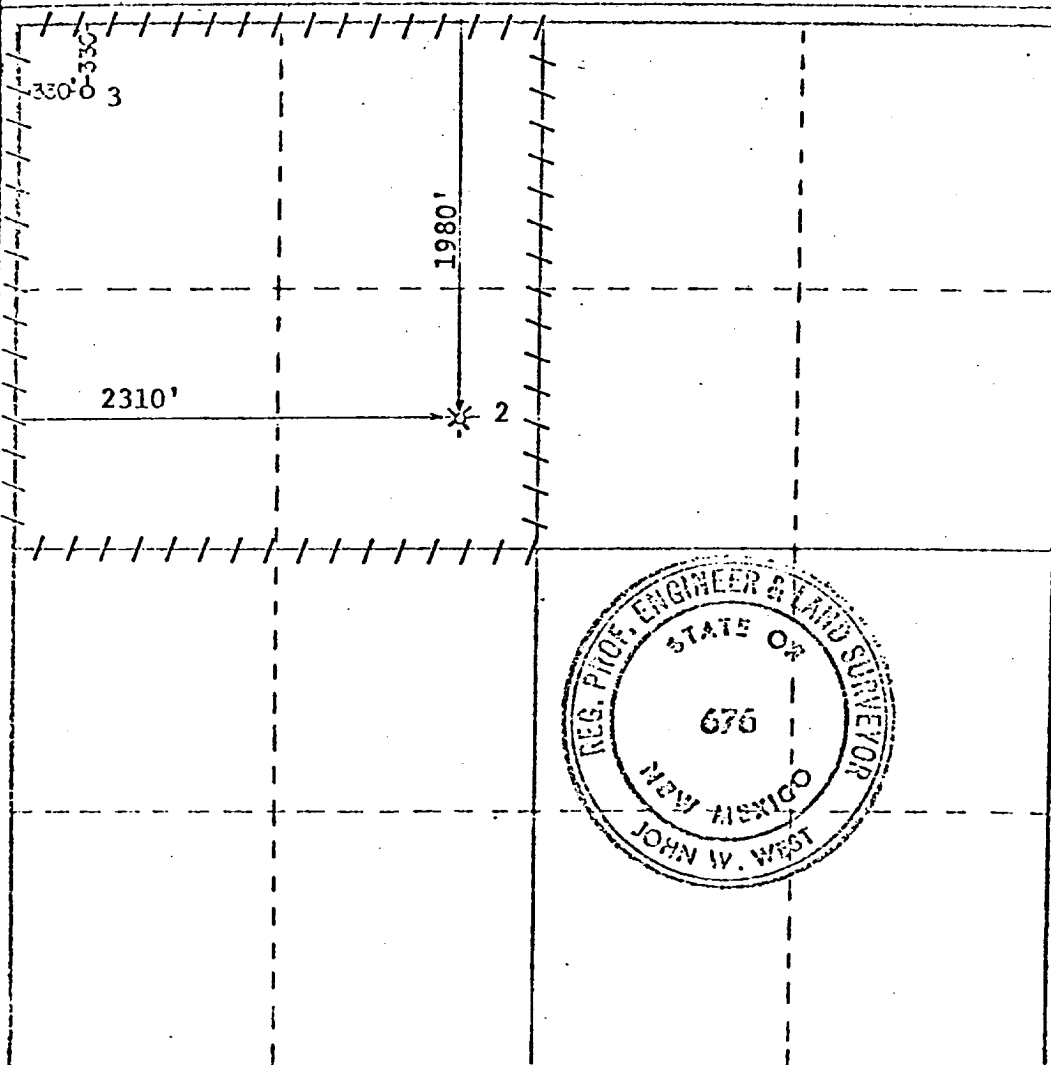
Operator Division of Atlantic Richfield Co. ARCO Oil & Gas Co.		Lease F.M. Burleson WN		Well No. 3
Unit Letter D	Section 8	Township 25 South	Range 37 East	County Lea
Actual Footage Location of Well:				
330 feet from the North line and		330 feet from the West line		
Ground Level Elev. 3177.2	Producing Formation Tansill Yates 7 Rivers	Pool Jalmat Gas	Dedicated Acreage: 160 Acres	

1. Outline the acreage dedicated to the subject well by colored pencil or hatchure marks on the plat below.
2. If more than one lease is dedicated to the well, outline each and identify the ownership thereof (both as to working interest and royalty).
3. If more than one lease of different ownership is dedicated to the well, have the interests of all owners been consolidated by communitization, unitization, force-pooling, etc?

☐ Yes ☐ No If answer is "yes;" type of consolidation _____

If answer is "no," list the owners and tract descriptions which have actually been consolidated. (Use reverse side of this form if necessary.) _____

No allowable will be assigned to the well until all interests have been consolidated (by communitization, unitization, forced-pooling, or otherwise) or until a non-standard unit, eliminating such interests, has been approved by the Commission.



CERTIFICATION	
I hereby certify that the information contained herein is true and complete to the best of my knowledge and belief.	
 Position Dist. Drlg. Supt. ARCO Oil and Gas Company Division of Atlantic Richfield Company	
Date 3/31/81	
I hereby certify that the well location shown on this plat was plotted from field notes of actual surveys made by me or under my supervision, and that the same is true and correct to the best of my knowledge and belief.	
Date Surveyed May 21, 1980 Registered Professional Engineer and/or Land Surveyor 	