

Submit to Appropriate  
District Office  
State Lease - 4 copies  
Fee Lease - 3 copies

State of New Mexico  
Energy, Minerals and Natural Resources Department

Form C-102  
Revised 1-1-89

OIL CONSERVATION DIVISION

P.O. Box 2088  
Santa Fe, New Mexico 87504-2088

DISTRICT I  
P.O. Box 1980, Hobbs, NM 88240

DISTRICT II  
P.O. Drawer DD, Artesia, NM 88210

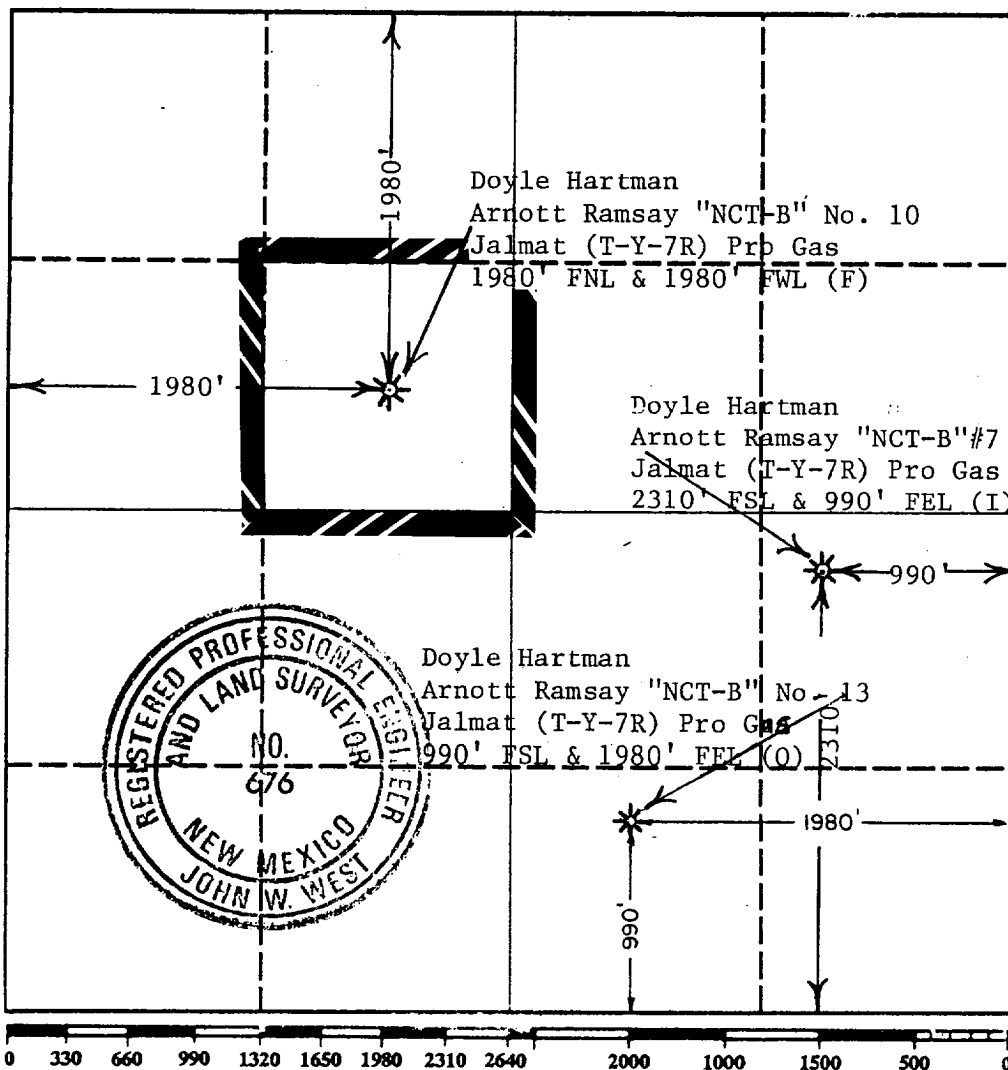
DISTRICT III  
1000 Rio Brazos Rd., Aztec, NM 87410

WELL LOCATION AND ACREAGE DEDICATION PLAT

All Distances must be from the outer boundaries of the section

Operator Doyle Hartman			Lease Arnott Ramsay "NCT-B"		Well No. 10
Unit Letter F	Section 32	Township 25 South	Range 37 East	County Lea	
Actual Footage Location of Well: 1980 feet from the North line and 1980 feet from the West line					
Ground level Elev. 2995.8	Producing Formation Yates-Seven Rivers		Pool Jalmat (T-Y-7R) Oil	Dedicated Acreage: 40 Acres	

1. Outline the acreage dedicated to the subject well by colored pencil or hatchure marks on the plat below.
2. If more than one lease is dedicated to the well, outline each and identify the ownership thereof (both as to working interest and royalty).
3. If more than one lease of different ownership is dedicated to the well, have the interest of all owners been consolidated by communitization, unitization, force-pooling, etc.?  
☐ Yes ☐ No If answer is "yes" type of consolidation \_\_\_\_\_  
If answer is "no" list the owners and tract descriptions which have actually been consolidated. (Use reverse side of this form if necessary.)  
No allowable will be assigned to the well until all interests have been consolidated (by communitization, unitization, forced-pooling, or otherwise) or until a non-standard unit, eliminating such interest, has been approved by the Division.



OPERATOR CERTIFICATION

I hereby certify that the information contained herein is true and complete to the best of my knowledge and belief.

Signature *Patrick K. Worrell*  
Printed Name Patrick K. Worrell  
Position Engineer  
Company Doyle Hartman  
Date 7-23-91

SURVEYOR CERTIFICATION

I hereby certify that the well location shown on this plat was plotted from field notes of actual surveys made by me or under my supervision, and that the same is true and correct to the best of my knowledge and belief.

Date Surveyed August 12, 1989  
Signature & Seal of Professional Surveyor *John W. West*

Certificate No. JOHN W. WEST, 676  
RONALD J. EIDSON, 3239

RECEIVED

JUL 26 1991

6-20  
HOBBS OFFICE

Submit to Appropriate  
District Office  
State Lease - 4 copies  
Fee Lease - 3 copies

State of New Mexico  
Energy, Minerals and Natural Resources Department

Form C-102  
Revised 1-1-89

OIL CONSERVATION DIVISION

P.O. Box 2088

Santa Fe, New Mexico 87504-2088

DISTRICT I

P.O. Box 1980, Hobbs, NM 88240

DISTRICT II

P.O. Drawer DD, Artesia, NM 88210

DISTRICT III

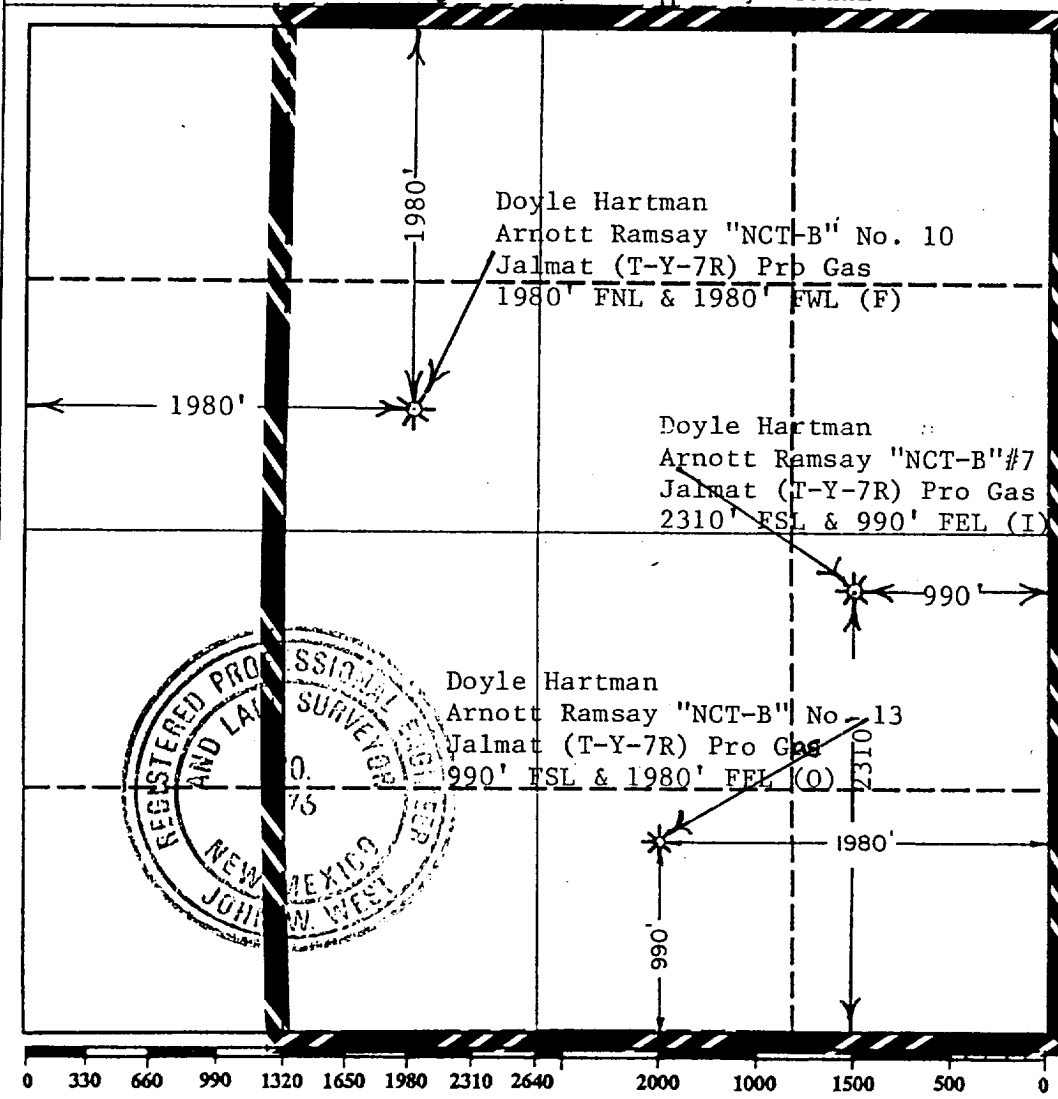
1000 Rio Brazos Rd., Aztec, NM 87410

WELL LOCATION AND ACREAGE DEDICATION PLAT

All Distances must be from the outer boundaries of the section

Operator Doyle Hartman			Lease Arnott Ramsay "NCT-B"		Well No. 10
Unit Letter F	Section 32	Township 25 South	Range 37 East	County Lea	
Actual Footage Location of Well: 1980 feet from the North line and 1980 feet from the West line					
Ground level Elev. 2995.8	Producing Formation Yates-Seven Rivers		Pool Jalmat (T-Y-7R) Pro Gas		Dedicated Acreage: 480 Acres

1. Outline the acreage dedicated to the subject well by colored pencil or hatchure marks on the plat below.
2. If more than one lease is dedicated to the well, outline each and identify the ownership thereof (both as to working interest and royalty).
3. If more than one lease of different ownership is dedicated to the well, have the interest of all owners been consolidated by communitization, unitization, force-pooling, etc?  
☐ Yes ☐ No If answer is "yes" type of consolidation \_\_\_\_\_  
If answer is "no" list the owners and tract descriptions which have actually been consolidated. (Use reverse side of this form if necessary).  
No allowable will be assigned to the well until all interests have been consolidated (by communitization, unitization, forced-pooling, or otherwise) or until a non-standard unit, eliminating such interest, has been approved by the Division.



OPERATOR CERTIFICATION

I hereby certify that the information contained herein is true and complete to the best of my knowledge and belief.

Signature  
*Michael Stewart*  
Printed Name  
Michael Stewart  
Position  
Engineer  
Company  
Doyle Hartman  
Date  
4-25-91

SURVEYOR CERTIFICATION

I hereby certify that the well location shown on this plat was plotted from field notes of actual surveys made by me or under my supervision, and that the same is true and correct to the best of my knowledge and belief.

Date Surveyed  
August 12, 1989  
Signature & Seal of Professional Surveyor  
*John W. West*  
Certificate No. JOHN W. WEST, 676  
RONALD J. EIDSON, 3239

NSP-16.28

Submit to Appropriate  
District Office  
State Lease - 4 copies  
Fee Lease - 3 copies

State of New Mexico  
Energy, Minerals and Natural Resources Department

Form C-102  
Revised 1-1-89

OIL CONSERVATION DIVISION

DISTRICT I  
P.O. Box 1980, Hobbs, NM 88240

P.O. Box 2088  
Santa Fe, New Mexico 87504-2088

DISTRICT II  
P.O. Drawer DD, Artesia, NM 88210

DISTRICT III  
1000 Rio Brazos Rd., Aztec, NM 87410

WELL LOCATION AND ACREAGE DEDICATION PLAT

All Distances must be from the outer boundaries of the section

Operator Chevron U.S.A. Inc.			Lease Arnott Ramsay NCT-B		Well No. 10
Unit Letter F	Section 32	Township 25S	Range 37E	County Lea	
Actual Footage Location of Well: 1980 feet from the North line and 1980 feet from the West line					
Ground level Elev. 2995.8	Producing Formation Jalmat yates-SR		Pool Jalmat-Tansiel Yates/Seven Rivers	Dedicated Acreage: 320 Acres	

1. Outline the acreage dedicated to the subject well by colored pencil or hatchure marks on the plat below.

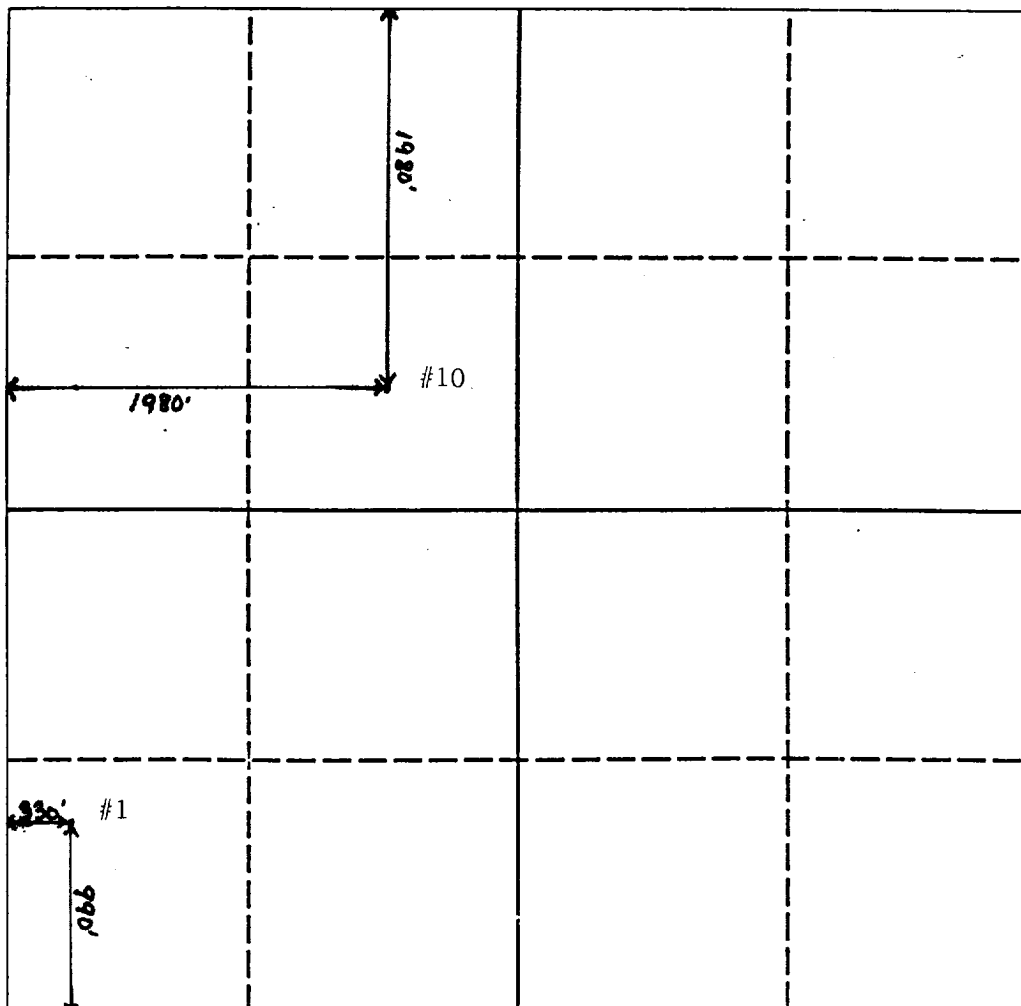
2. If more than one lease is dedicated to the well, outline each and identify the ownership thereof (both as to working interest and royalty). One lease

3. If more than one lease of different ownership is dedicated to the well, have the interest of all owners been consolidated by communitization, unitization, force-pooling, etc.?

☐ Yes ☐ No If answer is "yes" type of consolidation

If answer is "no" list the owners and tract descriptions which have actually been consolidated. (Use reverse side of this form if necessary).

No allowable will be assigned to the well until all interests have been consolidated (by communitization, unitization, forced-pooling, or otherwise) or until a non-standard unit, eliminating such interest, has been approved by the Division.



OPERATOR CERTIFICATION

I hereby certify that the information contained herein is true and complete to the best of my knowledge and belief.

Signature

M. E. Akins 4/19/90

Printed Name

M. E. Akins

Position

Staff Drlg. Engr.

Company

Chevron U.S.A. Inc.

Date

6-19-90

SURVEYOR CERTIFICATION

I hereby certify that the well location shown on this plat was plotted from field notes of actual surveys made by me or under my supervision, and that the same is true and correct to the best of my knowledge and belief.

Date Surveyed

Signature & Seal of  
Professional Surveyor

Certificate No.

R-693 320 ac Jalmat w/2 sec. 32

RECEIVED

JUN 21 1990

OCD  
HOBBS OFFICE

---

LEA  
GULF OIL CORP.

Langlie-Mattix  
10 Arnott Ramsay NCT-B  
Sec 32, T25S, R37E

---

NM  
Page #2

1-12-81 Continued  
LOG TOPS: Rustler Anhydrite 946, Salt  
1066, Base Salt 2512, Yates 2708, Seven  
Rivers 2972  
LOGS RUN: GRL, CCL  
12-27-80 TEMPORARY COMPLETION ISSUED  
1-17-81 RE-ISSUE OF SUSPENDED COMPLETION  
1-24-81 RE-ISSUE TO ADD ADDITIONAL WELL DATA

12-4-25 NM  
IC 30-025-70378-80

---

---

COUNTY LEA

FIELD Langlie-Mattix

STATE NM

WPR GULF OIL CORP.

API 30-025-26962

NO 10 LEASE Arnott Ramsay NCT-B

MAP

Sec 32, T25S, R37E

CO-ORD

1980 FNL, 1980 FWL of Sec

12-4-25 NM

2 mi S/Jal

SPD 9-5-80

CMP 10-10-80

CSG

8 5/8-355-300 sx

5 1/2-3400-1325 sx

2 3/8-3214

WELL CLASS: INIT D FIN DO LSE. CODE

FORMATION

DATUM

FORMATION

DATUM

TD 3400 (QUEN)

PBD 3361

IP (Seven Rivers-Queen) Perfs 3312-20 P 6 BOPD + 18 BW. Pot based on 24 hr test. GOR (NR); gty 30.2

CONTR Cactus #6

OPRSELEV 2996 GL, 3006 KB PD 3400 RT

F.R. 8-11-80  
(Seven Rivers-Queen)  
9-9-80 Drlg 3854 anhy & salt  
9-16-80 TD 3400; WOCT  
9-23-80 TD 3400; PBD 3361; SI  
Perf (Seven Rivers-Queen) 3312-20 w/2 SPF  
Acid (3312-20) 1000 gals (15% NEFE)  
Frac (3312-20) 10,000 gals + 13,000# sd  
Swbd 17 BLW in 1 hr 30 mins (3312-20)  
9-29-80 TD 3400; PBD 3361; Swbg Ld  
Swbd 3 BO + 19 BLW in 9 hrs (3312-20)  
10-13-80 TD 3400; PBD 3361; TOP  
Ppd 6 BO + 18 BW in 24 hrs (3312-20)  
10-20-80 TD 3400; PBD 3361; TOP  
Ppd 4 BO + 17 BW + Gas @ 12 MCFGPD in 24 hrs  
(3312-20)  
10-21-80 TD 3400; PBD 3361; Prep RUP  
1-12-81 TD 3400; PBD 3361; Complete

12-4-25 NM

---

LEA  
GULF OIL CORP.

Langlie-Mattix  
10 Arnett Ramsay NCT-B  
Sec 32, T25S, R37E

---

NM  
Page #2

1-12-81      Continued  
LOG TOPS: Rustler Anhydrite 946, Salt  
1066, Base Salt 2512, Yates 2708, Seven  
Rivers 2972  
LOGS RUN: GRL, CCL  
12-27-80      TEMPORARY COMPLETION ISSUED  
1-17-81      RE-ISSUE OF SUSPENDED COMPLETION  
1-24-81      RE-ISSUE TO ADD ADDITIONAL WELL DATA

12-4-25 NM  
IC 30-025-70378-80

---

---