

NEW MEXICO OIL CONSERVATION COMMISSION
WELL LOCATION AND ACREAGE DEDICATION AT

Form O-102
Supersedes O-128
Effective 1-1-65

All distances must be from the outer boundaries of the Section

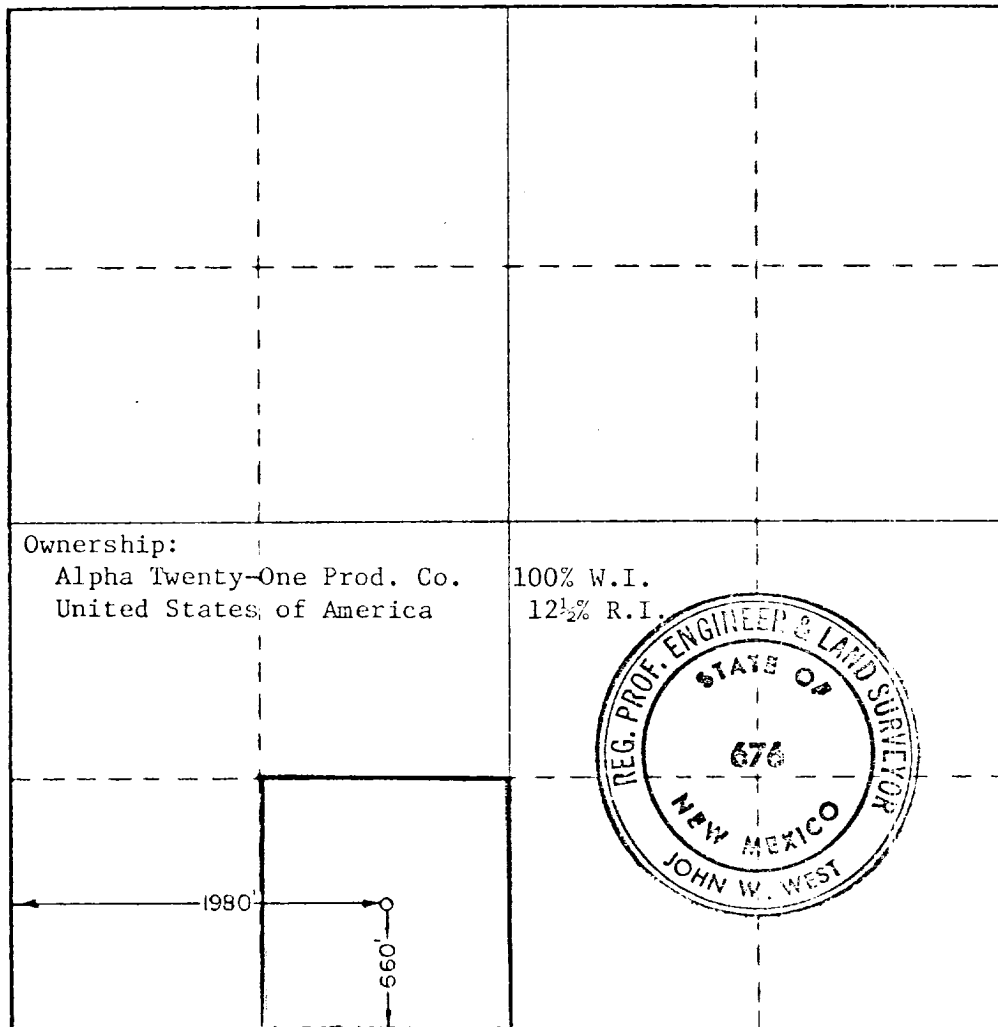
Operator Alpha 21 Production Company			Lease Buckskin Federal		Well No. 1
North Letter N	Section 18	Township 24 South	Range 38 East	County Lea	
Actual Entrance Location of Well: 660 feet from the South line and 1980 feet from the West line					
Ground Level Elev. 3174.5	Producing Formation Drinkard		Pool West Dollarhide		Dedicated Acreage 40 Acres

1. Outline the acreage dedicated to the subject well by colored pencil or hatchure marks on the plat below.
2. If more than one lease is dedicated to the well, outline each and identify the ownership thereof (both as to working interest and royalty).
3. If more than one lease of different ownership is dedicated to the well, have the interests of all owners been consolidated by communitization, unitization, force-pooling, etc?

☐ Yes ☐ No If answer is "yes," type of consolidation _____

If answer is "no," list the owners and tract descriptions which have actually been consolidated. (Use reverse side of this form if necessary.) _____

No allowable will be assigned to the well until all interests have been consolidated (by communitization, unitization, forced-pooling, or otherwise) or until a non-standard unit, eliminating such interests, has been approved by the Commission.



CERTIFICATION

I hereby certify that the information contained herein is true and complete to the best of my knowledge and belief.

Name

Tommy Phipps

Position

Executive Vice President

Company

Alpha Twenty-One Production Co.

Date

7-9-80

I hereby certify that the well location shown on this plat was plotted from field notes of actual surveys made by me or under my supervision, and that the same is true and correct to the best of my knowledge and belief.

Date Surveyed

July 1 & 2, 1980

Registered Professional Engineer and/or Land Surveyor

John W. West

Certificate No. **JOHN W. WEST 676**
PATRICK A. NUMERO 6663
Ronald J. Lidson 3239

