

UNITED STATES
DEPARTMENT OF THE INTERIOR
GEOLOGICAL SURVEY

APPLICATION FOR PERMIT TO DRILL, DEEPEN, OR PLUG BACK

1a. TYPE OF WORK

DRILL ☒DEEPEN ☐PLUG BACK ☐

b. TYPE OF WELL

OIL
WELL ☒GAS
WELL ☐

OTHER

SINGLE
ZONE ☒MULTIPLE
ZONE ☐

2. NAME OF OPERATOR

Amoco Production Company

3. ADDRESS OF OPERATOR

P. O. Box 68 Hobbs, NM 88240

4. LOCATION OF WELL (Report location clearly and in accordance with any State requirements.*)

At surface

At proposed prod. zone

1980' FSL & 1980' FWL, Sec. HOBBS, NEW MEXICO
T-25-S, R-33-E

14. DISTANCE IN MILES AND DIRECTION FROM NEAREST TOWN OR POST OFFICE*

26 miles west of Jal, NM

15. DISTANCE FROM PROPOSED*

LOCATION TO NEAREST
PROPERTY OR LEASE LINE, FT.
(Also to nearest drlg. unit line, if any)

16. NO. OF ACRES IN LEASE

17. NO. OF ACRES ASSIGNED
TO THIS WELL

40

18. DISTANCE FROM PROPOSED LOCATION*

TO NEAREST WELL, DRILLING, COMPLETED,
OR APPLIED FOR, ON THIS LEASE, FT.

19. PROPOSED DEPTH

5300'

20. ROTARY OR CABLE TOOLS

Rotary

21. ELEVATIONS (Show whether DF, RT, GR, etc.)

3332.4' GL

22. APPROX. DATE WORK WILL START*

10-17-80

23.

PROPOSED CASING AND CEMENTING PROGRAM

SIZE OF HOLE	SIZE OF CASING	WEIGHT PER FOOT	SETTING DEPTH	QUANTITY OF CEMENT
12-1/4"	8-5/8"	24#	600'	Circulate
7-7/8"	5-1/2"	17, 20, & 23#	5300'	Circulate

Propose to drill and equip well in the Delaware formation. After reaching TD, logs will be run and evaluated; perforate and/or stimulate as necessary in attempting commercial production.

MUD PROGRAM: 0'- 600' Native mud and fresh water
600'-5300' Commercial mud and brine water with minimum properties for safe hole conditions.

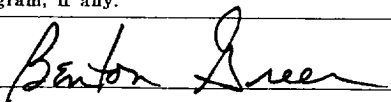
BOP Program Attached
Archaeological Survey Attached

0+4-USGS,H 1-Hou 1-Susp 1-LBG 1-Wayne Stafford, Hou

IN ABOVE SPACE DESCRIBE PROPOSED PROGRAM: If proposal is to deepen or plug back, give data on present productive zone and proposed new productive zone. If proposal is to drill or deepen directionally, give pertinent data on subsurface locations and measured and true vertical depths. Give blowout preventer program, if any.

24.

SIGNED



TITLE Ast. Adm. Analyst

DATE

9-30-80

(This space for Federal or State office use)

PERMIT NO.

APPROVAL DATE

(Orig. Sgd.) GEORGE H. STEWART

APPROVED BY

TITLE

DISTRICT ENGINEER

DATE

OCT 20 1980

CONDITIONS OF APPROVAL, IF ANY:

NEW MEXICO OIL CONSERVATION COMMISSION
WELL LOCATION AND ACREAGE DEDICATION PLAT

Form C-102
Supersedes C-128
Effective 1-1-65

All distances must be from the outer boundaries of the Section.

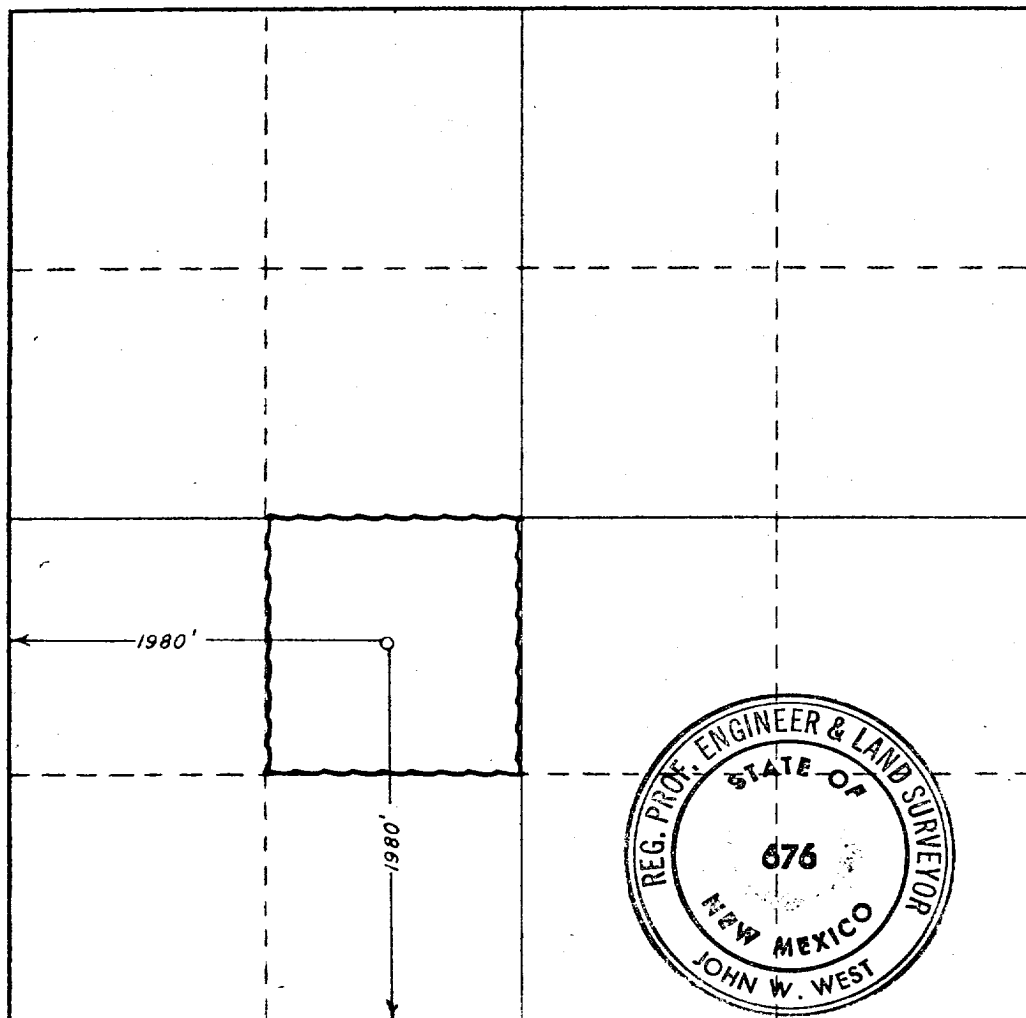
Operator AMOCO PRODUCTION COMPANY		Lease ANDRIKOPOLOUS FEDERAL		Well No. 2
Unit Letter K	Section 24	Township 25 SOUTH	Range 33 EAST	County LEA
Actual Footage Location of Well: 1980 feet from the SOUTH line and 1980 feet from the WEST line				
Ground Level Elev. 3332.4	Producing Formation Delaware	Pool Wildcat Delaware	Dedicated Acreage: 40 Acres	

1. Outline the acreage dedicated to the subject well by colored pencil or hachure marks on the plat below.
2. If more than one lease is dedicated to the well, outline each and identify the ownership thereof (both as to working interest and royalty).
3. If more than one lease of different ownership is dedicated to the well, have the interests of all owners been consolidated by communitization, unitization, force-pooling, etc?

☐ Yes ☐ No If answer is "yes," type of consolidation _____

If answer is "no," list the owners and tract descriptions which have actually been consolidated. (Use reverse side of this form if necessary.) _____

No allowable will be assigned to the well until all interests have been consolidated (by communitization, unitization, forced-pooling, or otherwise) or until a non-standard unit, eliminating such interests, has been approved by the Commission.



CERTIFICATION

I hereby certify that the information contained herein is true and complete to the best of my knowledge and belief.

Name Benton Greer
Position Asst. Administrative Analyst
Company Amoco Production Company
Date 9-30-80

I hereby certify that the well location shown on this plat was plotted from field notes of actual surveys made by me or under my supervision, and that the same is true and correct to the best of my knowledge and belief.

Date Surveyed JULY 24, 1980
Registered Professional Engineer and/or Land Surveyor

John W. West
Certificate No. JOHN W. WEST 676
PATRICK A. ROMERO 6863
Ronald J. Eidson 3239

330 660 990 1320 1650 1980 2310 2640 2000 1500 1000 500

Attachment to "Application for Permit to Drill", Form 9-331 C

Andrikopolous Federal Well No. 2, 1980' FSL & 1980' FWL, Sec. 24, T-25-S, R-33-E
Lea County, New Mexico

Amoco Production Company, P.O. Box 68, Hobbs, NM 88240

1. Location

See attached Form C-102

2. Elevation

See attached Form C-102

3. Geologic name of surface formation.

Quaternary

4. Type of drilling tools and associated equipment to be utilized.

See Form 9-331 C

5. Proposed drilling depth.

See Form 9-331 C

6. Estimated tops of important geologic markers.

Delaware Lime 5130'

Delaware Sand 5170'

7. Estimated depths at which anticipated water, oil, gas or other mineral-bearing formations are expected to be encountered.

Delaware Sand 5170'

8. Proposed casing program, including size, grade, and weight of each string and whether it is new or used.

<u>Depth</u>	<u>Size</u>	<u>Weight</u>	<u>Grade</u>	<u>New or Used</u>
600'	8 5/8"	24#	K-55	New
5300'	5 1/2"	17#, 20#, 23#	N-80	New

9. Proposed cementing program.

8 5/8" Circualte to surface

5 1/2" Circualte to surface

10. Blowout Preventer Program is attached.

11. Type and characteristics of the proposed circulating medium or mediums to be employed for rotary drilling, and the quantities and types of mud and weighting material to be maintained.

0-600' Native mud and fresh water

600-5300' Commercial mud and brine water with minimum properties for safe hole conditions.

12. Testing, logging and coring programs to be followed with provisions made for required flexibility.

Comp Neutron Form Density w/caliper Surf to TD

Dual Laterolog Micro SFL Surf to TD

13. Any anticipated abnormal pressure or temperatures expected to be encountered or potential hazards, such as hydrogen sulfide gas, along with plans for mitigating such hazards.

None anticipated

14. Anticipated starting date and duration of operation.

10-15-80 11-15-80

15. Other facets of the proposed operation operator wishes to point out for the Geological Survey's consideration of the application.

Request exemptions from the painting stipulations of Sec. 102 (a) (8) of the "Federal Land Policy and Management Act of 1976" to paint any tanks, separators, and treaters required for the production of this well, Amoco's standard gray color. If a pumping unit is required for the continued production of this well, it will be painted black with orange safety color coding which conforms with your current painting guidelines.