

NEW MEXICO OIL CONSERVATION COMMISSION
WELL LOCATION AND ACREAGE DEDICATION PLAT

Form C-102
Supersedes C-128
Effective 1-1-65

All distances must be from the outer boundaries of the Section

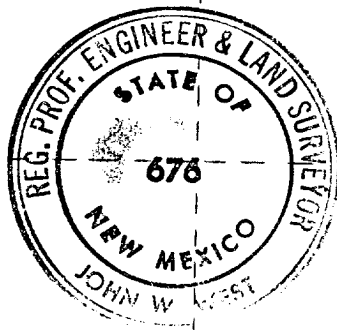
Operator Conoco, Inc.			Lease Sholes A Account 1			Well No. 5		
Unit Letter 1	Section 24	Township 25South	Range 36East	County Lea				
Actual Footage Location of Well: 2310 feet from the South line and 330 feet from the East line								
Ground Level Elev. 3907.1	Producing Formation Grayburg / San Andres			Pool Undesignated Grayburg / San Andres			Dedicated Acreage: 40 Acres	

1. Outline the acreage dedicated to the subject well by colored pencil or hatchure marks on the plat below.
2. If more than one lease is dedicated to the well, outline each and identify the ownership thereof (both as to working interest and royalty).
3. If more than one lease of different ownership is dedicated to the well, have the interests of all owners been consolidated by communitization, unitization, force-pooling, etc?

☐ Yes ☐ No If answer is "yes," type of consolidation _____

If answer is "no," list the owners and tract descriptions which have actually been consolidated. (Use reverse side of this form if necessary.) _____

No allowable will be assigned to the well until all interests have been consolidated (by communitization, unitization, forced-pooling, or otherwise) or until a non-standard unit, eliminating such interests, has been approved by the Commission.



CERTIFICATION

I hereby certify that the information contained herein is true and complete to the best of my knowledge and belief.

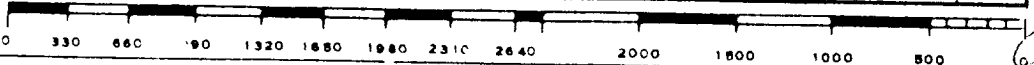
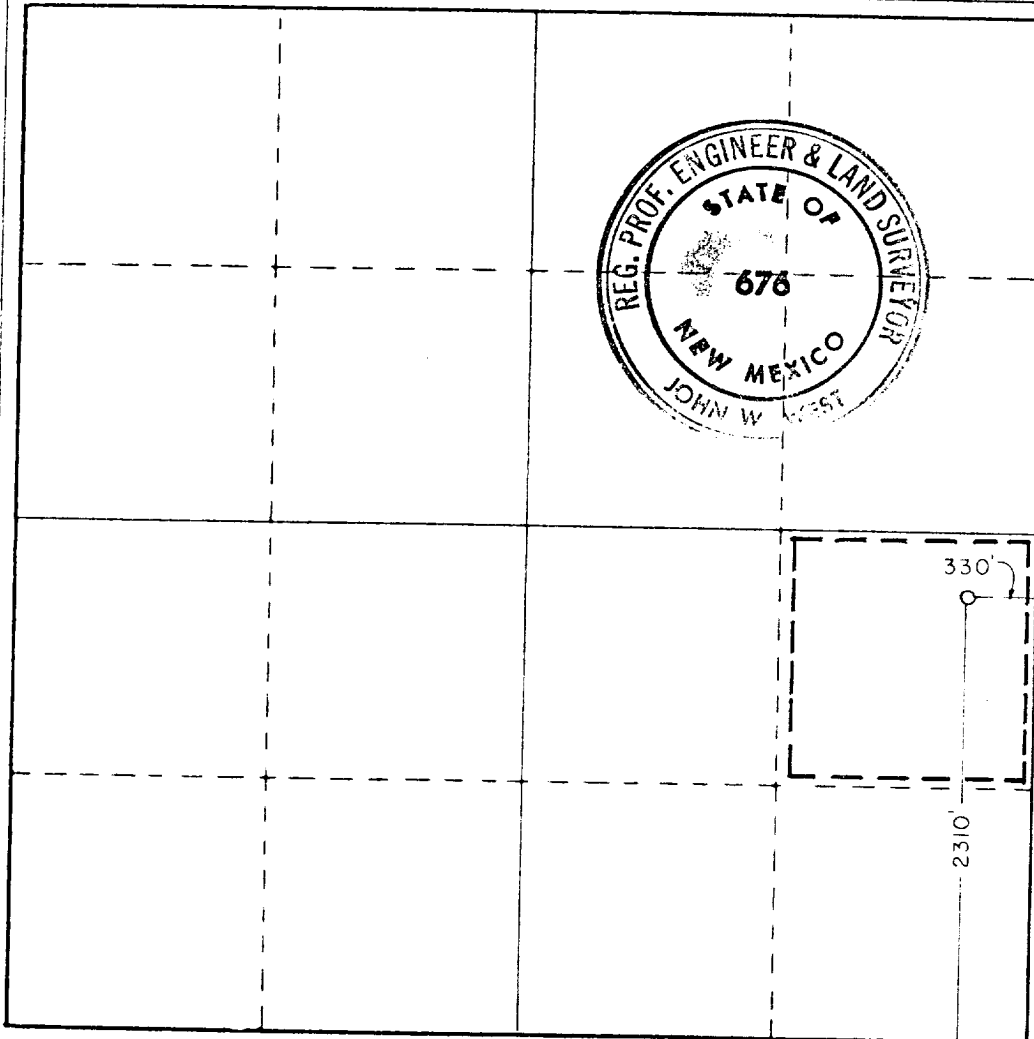
Name **John A. Butterfield**
Position **Administrative Supervisor**
Company **Conoco Inc.**

Date **July 21, 1981**

I hereby certify that the well location shown on this plat was plotted from field notes of actual surveys made by me or under my supervision, and that the same is true and correct to the best of my knowledge and belief.

Date Surveyed **July 11, 1981**
Registered Professional Engineer and/or Land Surveyor
John W. West

Certificate No **JOHN W. WEST 878**
PATRICK A. ROMERO 6865
Ronald J. Eidson 3239



1/20/82 must have been
lost

ELF

100 3 10831