

WELL LOCATION AND ACREAGE DEDICATION PLAT

Form C-128
Supersedes C-128
Effective 1-1-65

All distances must be from the outer boundaries of the Section

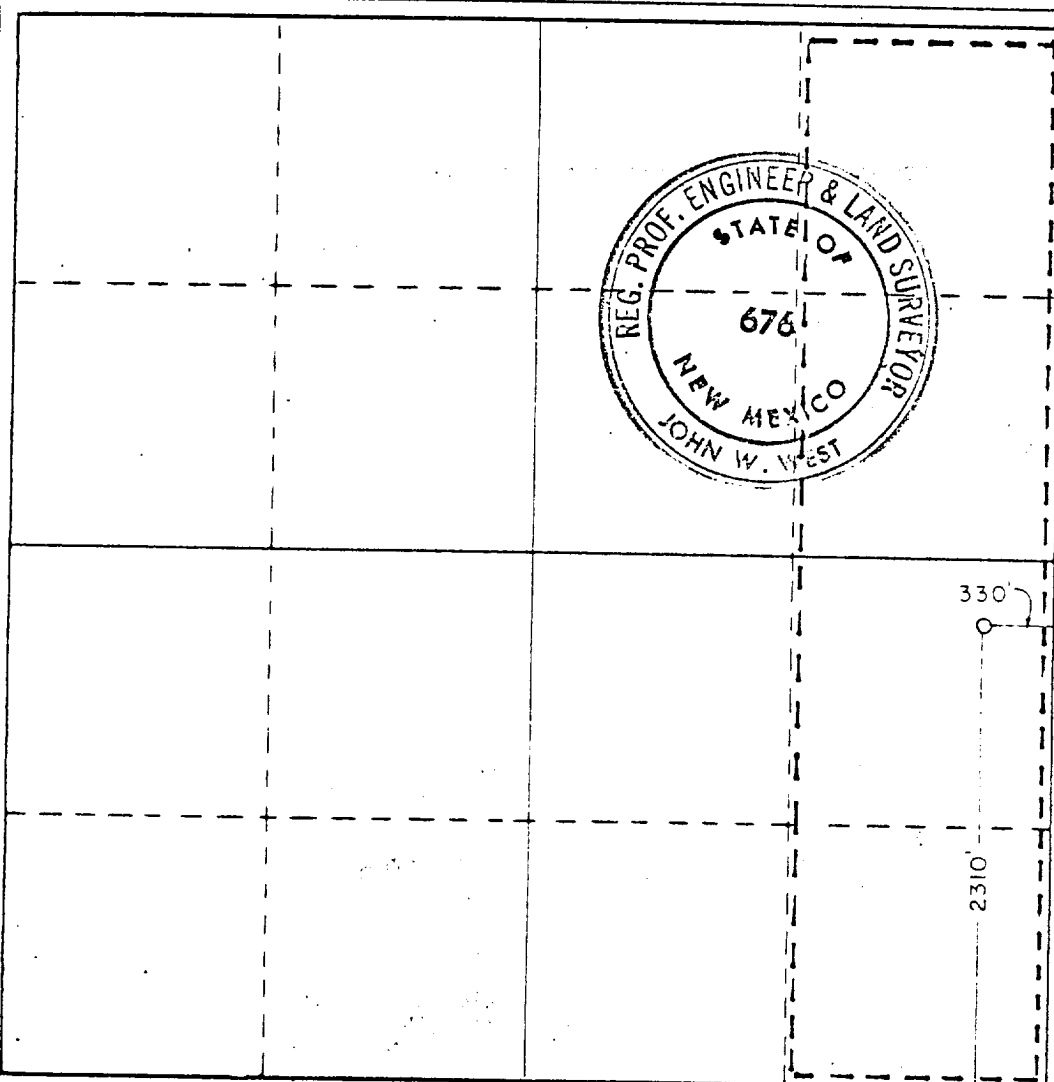
Operator Conoco, Inc.		Lease Sholes A Account 1		Well No. 5	
Unit Letter I	Section 24	Township 25South	Range 36East	County Lea	
Actual Footage Location of Well: 2310 feet from the South line and 330 feet from the East line					
Ground Level Elev. 3965.1	Producing Formation YATES		Pool JALMAT GAS		Dedicated Acreage: 160 Acres

1. Outline the acreage dedicated to the subject well by colored pencil or hachure marks on the plat below.
2. If more than one lease is dedicated to the well, outline each and identify the ownership thereof (both as to working interest and royalty).
3. If more than one lease of different ownership is dedicated to the well, have the interests of all owners been consolidated by communitization, unitization, force-pooling, etc?

☐ Yes ☐ No If answer is "yes," type of consolidation _____

If answer is "no," list the owners and tract descriptions which have actually been consolidated. (Use reverse side of this form if necessary.) _____

No allowable will be assigned to the well until all interests have been consolidated (by communitization, unitization, forced-pooling, or otherwise) or until a non-standard unit, eliminating such interests, has been approved by the Commission.



CERTIFICATION

I hereby certify that the information contained herein is true and complete to the best of my knowledge and belief.

Name
John W. West
Position
Administrative Supervisor
Company
CONOCO INC.
Date
7/26/83

I hereby certify that the well location shown on this plat was plotted from field notes of actual surveys made by me or under my supervision, and that the same is true and correct to the best of my knowledge and belief.

Date Surveyed
July 11, 1981
Registered Professional Engineer and/or Land Surveyor
John W. West
Certificate No. **JOHN W. WEST 876**
PATRICK A. ROMERO 8868
Ronald J. Eidson 3239

0 330 660 990 1320 1650 1980 2310 2640 2970 3300