

NEW MEXICO OIL CONSERVATION COMMISSION
WELL LOCATION AND ACREAGE DEDICATION PLAT

Form C-102
Supersedes C-128
Effective 1-1-65

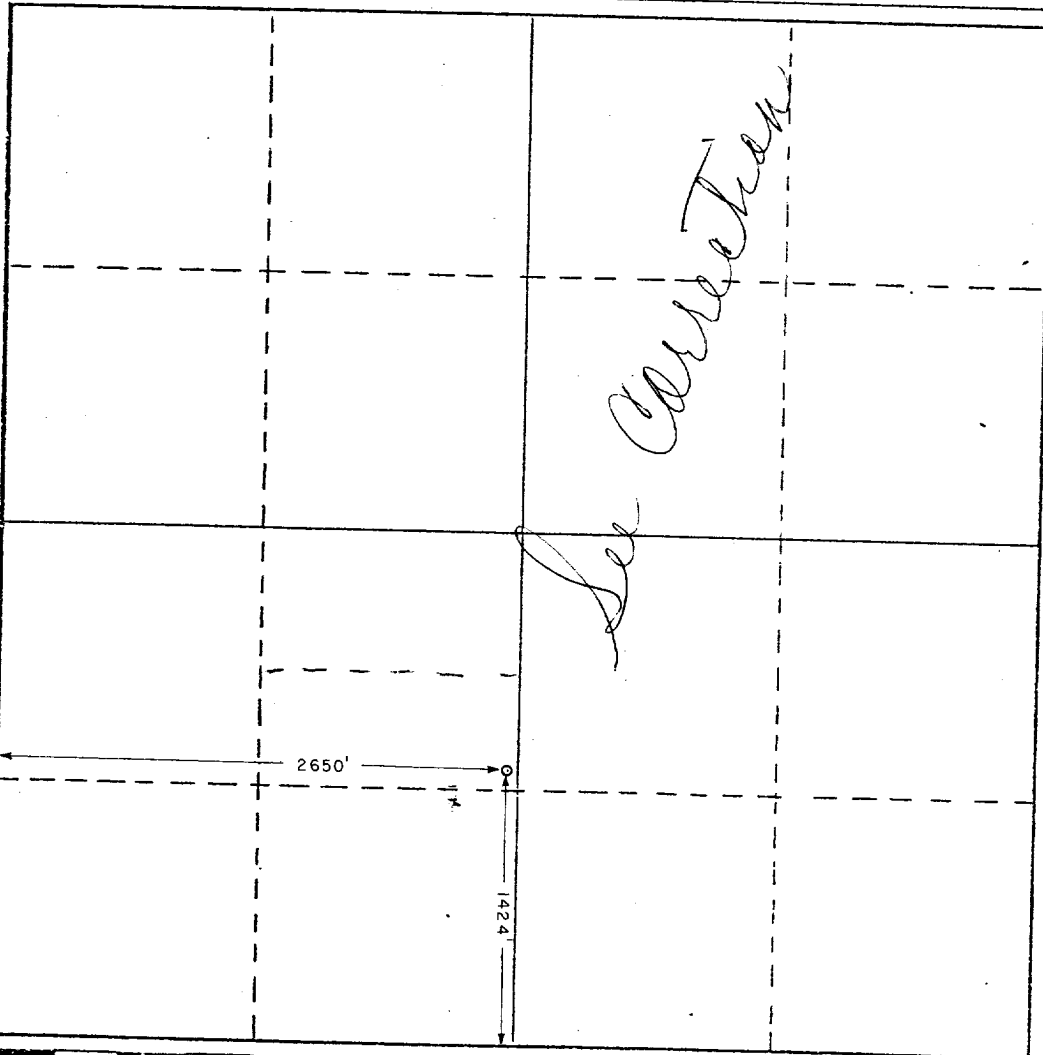
All distances must be from the outer boundaries of the Section.

Operator Union Texas Petroleum Corporation			Lease Langlie-Jal Unit		Well No. 99
Unit Letter K	Section 32	Township 24-S	Range 37-E	County Lea	
Actual Footage Location of Well: 1424 feet from the South line and 2650 feet from the West line					
Ground Level Elev. 3238.3	Producing Formation Seven Rivers Queen		Pool Langlie Mattix (Queen)	Dedicated Acreage: 20 Acres	

1. Outline the acreage dedicated to the subject well by colored pencil or hachure marks on the plat below.
2. If more than one lease is dedicated to the well, outline each and identify the ownership thereof (both as to working interest and royalty).
3. If more than one lease of different ownership is dedicated to the well, have the interests of all owners been consolidated by communitization, unitization, force-pooling, etc?
☐ Yes ☒ No If answer is "yes," type of consolidation _____

If answer is "no," list the owners and tract descriptions which have actually been consolidated. (Use reverse side of this form if necessary.) _____

No allowable will be assigned to the well until all interests have been consolidated (by communitization, unitization, forced-pooling, or otherwise) or until a non-standard unit, eliminating such interests, has been approved by the Commission.



CERTIFICATION

I hereby certify that the information contained herein is true and complete to the best of my knowledge and belief.

R. Atchley
Name
Richard Atchley

Position
Production Services

Company
Union Texas Pet. Corp.

Date
September 30, 1982

I hereby certify that the well location shown on this plat was plotted from field notes of actual surveys made by me or under my supervision, and that the same is true and correct to the best of my knowledge and belief.

Date Surveyed
September 25, 1982

Registered Professional Engineer
and/or Land Surveyor

M. C. Stwas

Certificate No.
2100

RECEIVED
OCT 13 1982
O.C.D.
HOBBS OFFICE