

DEPARTMENT OF THE INTERIOR
GEOLOGICAL SURVEY30-025-27873
5. LEASE DESIGNATION AND SERIAL NO.

LC-062300

6. IF INDIAN, ALLOTTEE OR TRIBE NAME

7. UNIT AGREEMENT NAME

8. FARM OR LEASE NAME

Cotton Draw Unit

9. WELL NO.

75

10. FIELD AND POOL, OR WILDCAT

Paduca Delaware

11. SEC., T., R., M., OR BLK.
AND SURVEY OR AREA

Sec. 15, T-25-S, R-32-E

12. COUNTY OR PARISH

Lea

13. STATE

New Mexico

APPLICATION FOR PERMIT TO DRILL, DEEPEN, OR PLUG BACK

1a. TYPE OF WORK

DRILL ☒DEEPEN ☐PLUG BACK ☐

b. TYPE OF WELL

OIL
WELL ☒GAS
WELL ☐

OTHER

SINGLE
ZONE ☐MULTIPLE
ZONE ☐

2. NAME OF OPERATOR

Texaco Inc.

3. ADDRESS OF OPERATOR

P. O. Box 3109, Midland, Texas 79702

4. LOCATION OF WELL (Report location clearly and in accordance with any State requirements.*)

At surface

465' FNL & 1980' FNL

At proposed prod. zone

14. DISTANCE IN MILES AND DIRECTION FROM NEAREST TOWN OR POST OFFICE*

36 miles east of Jal, New Mexico

15. DISTANCE FROM PROPOSED*

LOCATION TO NEAREST
PROPERTY OR LEASE LINE, FT.
(Also to nearest drlg. unit line, if any)

16. NO. OF ACRES IN LEASE

9384.52

17. NO. OF ACRES ASSIGNED
TO THIS WELL

40

18. DISTANCE FROM PROPOSED LOCATION*
TO NEAREST WELL, DRILLING, COMPLETED,
OR APPLIED FOR, ON THIS LEASE, FT.

19. PROPOSED DEPTH

4750'

20. ROTARY OR CABLE TOOLS

Rotary

21. ELEVATIONS (Show whether DF, RT, GR, etc.)

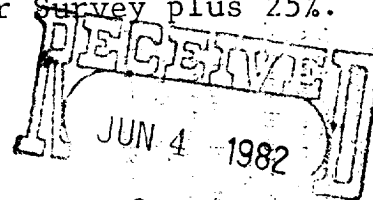
3447' Gr.

22. APPROX. DATE WORK WILL START*

July 15, 1982

23. PROPOSED CASING AND CEMENTING PROGRAM

SIZE OF HOLE	SIZE OF CASING	WEIGHT PER FOOT	SETTING DEPTH	QUANTITY OF CEMENT
12 1/2"	8 5/8"	24#K-55 STC	355'	400 Circulate
7 7/8"	5 1/2"	15.5#K-55STC	4750'	1550 Circulate

Surface Casing: 400 sxs Class "H" w/2% CaCl₂ (15.6 ppg, 1.18 ft³/sx).Production Casing: 1st Stage: 750 sxs HLW w/15#/sx salt, 1/4#/sx flocele (12.54 ppg, 1.83 ft³/sx) followed by 200 sxs Class "H" w/8#/sx salt, 1/4#/sx flocele (15.9 ppg, 1.22 ft³/sx).2nd Stage: 600 sxs Class "H" w/2% CaCl₂ (15.6 ppg, 1.18 ft³/sx). Cement volumes will be recalculated based upon Caliper Survey plus 25%.

IN ABOVE SPACE DESCRIBE PROPOSED PROGRAM: If proposal is to deepen or plug back, give data on present productive zone and proposed new productive zone. If proposal is to drill or deepen directionally, give pertinent data on subsurface locations and measured and true vertical depths. Give blowout preventer program, if any.

24.

SIGNED

R. L. Lane

TITLE

Asst. Engr. Manager

DATE

6-2-82

(This space for Federal or State office use)

PERMIT NO.

(Orig. Sgd.) GEORGE H. STEWART

APPROVAL DATE

JUN 25 1982

APPROVED BY

TITLE

DATE

CONDITIONS OF APPROVAL, IF ANY:

JAMES A. CILLHAM

DISTRICT SUPERVISOR

RECEIVED

JUN 29 1982

**O.C.D.
HOBBS OFFICE**

3. Surface Formation: Quarternary Alluvium

7. FORMATION TOPS

<u>Depth</u>	<u>Formation</u>	<u>Oil</u>	<u>Gas</u>	<u>Water</u>	<u>Minerals</u>
0					
100'	Ogallala			X	
355'	Dewey Lake			X	
780'	Top Anhydrite			X	
4410'	Base Salt			X	
4640'	Lamar Lime			X	
4660'	Delaware Sand	X	X		

10. Blowout Preventer (See Exhibit "A") will be installed after surface pipe is set at 355 feet. Testing frequency every eight (8) hours.

11. MUD PROGRAM

<u>Depth</u>	<u>Type</u>	<u>Weight</u>	<u>Viscosity</u>
0-355'	Spud Mud	8.4.8.6	34
355'4600'	Brine Water	10.0	28-30
4600TD	Brine Mud	10.0	32-34

12. This well will test the Delaware Sand. A GR-BHC Sonic Log will be run.

13. No abnormal pressures or temperatures or hazardous gases are anticipated to be encountered in this well.

14. Anticipated starting date will be July 15, 1982.

RECEIVED

JUN 29 1982

**O.C.D.
HOBBS OFFICE**

**NEW MEXICO OIL CONSERVATION COMMISSION
WELL LOCATION AND ACREAGE DEDICATION PLAT**

Form C-102
Supersedes C-128
Effective 1-1-65

All distances must be from the outer boundaries of the Section.

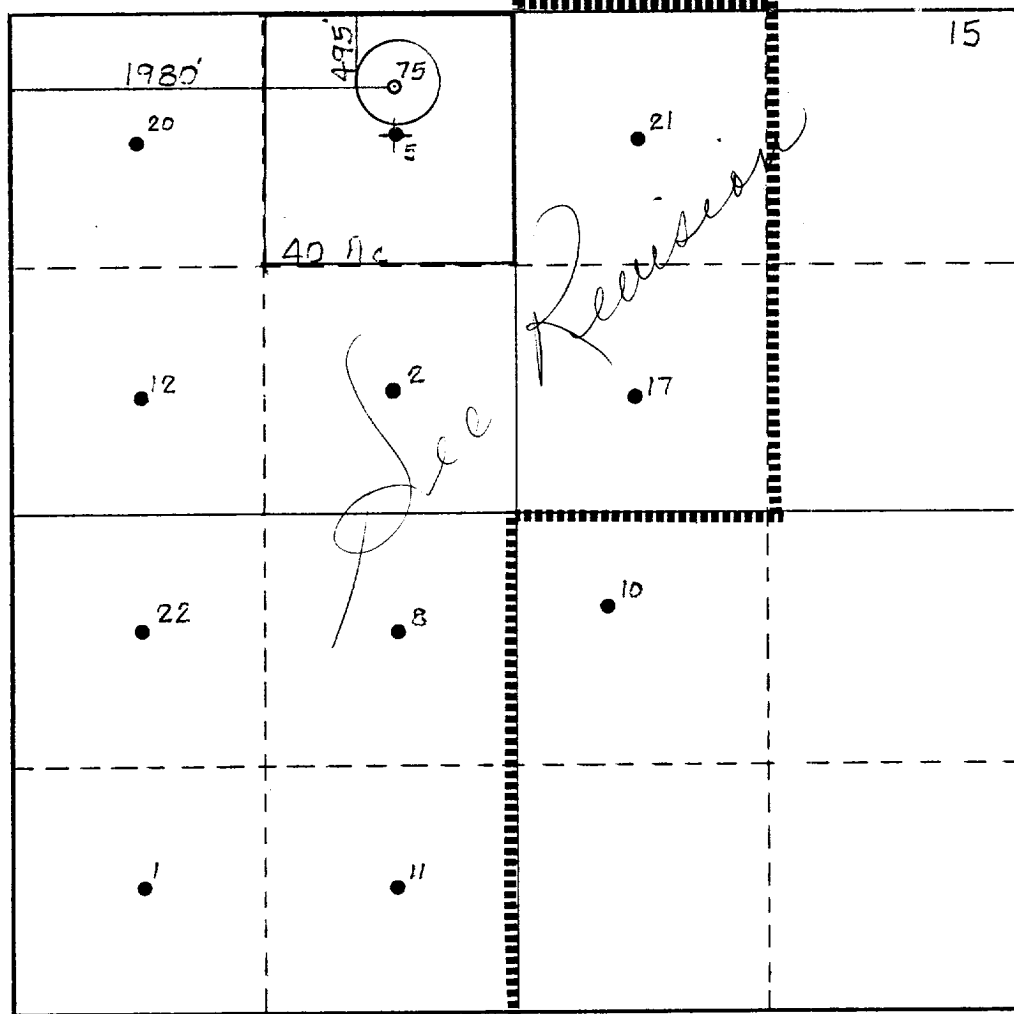
Operator Texaco Inc.			Lease Cotton Draw Unit		Well No. 75
Unit Letter C	Section 15	Township T-25-S	Range R-32-E	County Lea	
Actual Footage Location of Well: 495' feet from the North line and 1980' feet from the West line					
Ground Level Elev. 3447	Producing Formation Delaware Sand	Pool Paduca Delaware		Dedicated Acreage: 40 Acres	

1. Outline the acreage dedicated to the subject well by colored pencil or hachure marks on the plat below.
2. If more than one lease is dedicated to the well, outline each and identify the ownership thereof (both as to working interest and royalty).
3. If more than one lease of different ownership is dedicated to the well, have the interests of all owners been consolidated by communitization, unitization, force-pooling, etc?

☒ Yes ☐ No If answer is "yes," type of consolidation Unitization and Development Agreement

If answer is "no," list the owners and tract descriptions which have actually been consolidated. (Use reverse side of this form if necessary.) _____

No allowable will be assigned to the well until all interests have been consolidated (by communitization, unitization, forced-pooling, or otherwise) or until a non-standard unit, eliminating such interests, has been approved by the Commission.



CERTIFICATION

I hereby certify that the information contained herein is true and complete to the best of my knowledge and belief.

B. L. Eiland
Name **B. L. Eiland**

Position **Division Surveyor**

Company **Texaco Inc.**

Date **June 2, 1982**

I hereby certify that the well location shown on this plat was plotted from field notes of actual surveys made by me or under my supervision, and that the same is true and correct to the best of my knowledge and belief.

B. L. Eiland
Date Surveyed

May 18, 1982

Registered Professional Engineer
and/or Land Surveyor

B. L. Eiland

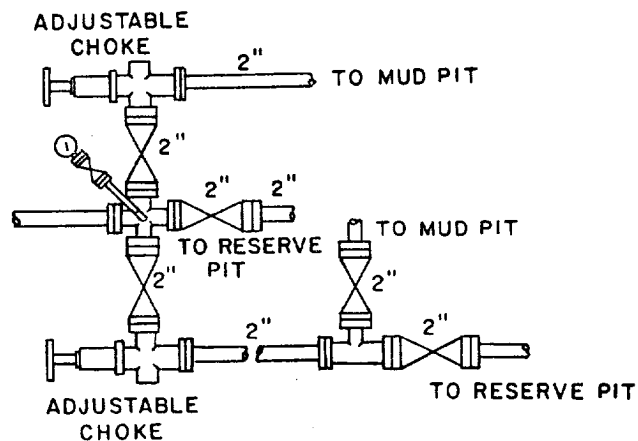
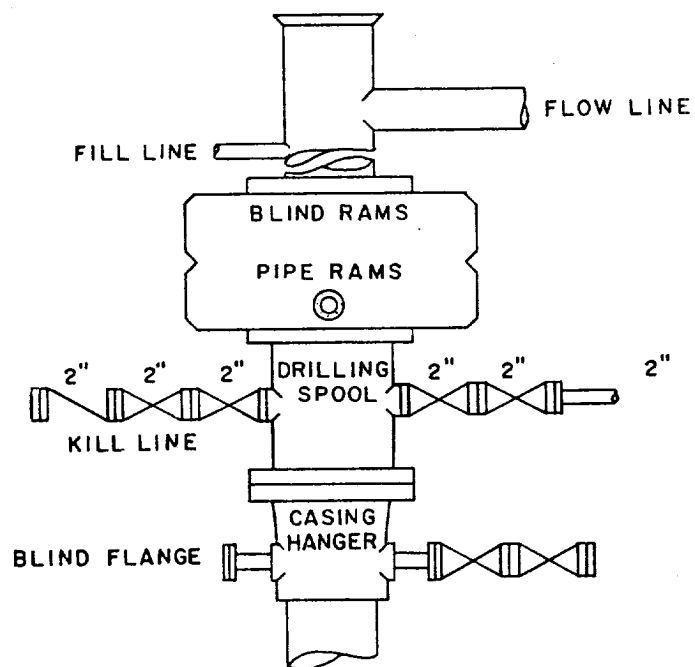
Certificate No.
4386

0 330 660 990 1320 1650 1980 2310 2640 2000 1500 1000 500 0

RECEIVED

JUN 29 1982

O.C.D.
HOBBS OFFICE



SCALE: NONE	DATE	EST. NO.	DRG. NO.
DRAWN BY JWD			
CHECKED BY RDW			
APPROVED BY			



TEXACO, INC.
PRODUCING DEPARTMENT-U.S.
MIDLAND, TEXAS



EXHIBIT "A"

RECEIVED

JUN 29 1982

O.C.D.
HOBBS OFFICE

