

UNITED STATES
DEPARTMENT OF THE INTERIOR
GEOLOGICAL SURVEY
N. M. OIL CONS. COMMISSION
HOBBS, NEW MEXICO 88240

30-035-28080

5. LEASE DESIGNATION AND SERIAL NO.

NM-053646-A

6. IF INDIAN, ALLOTTEE OR TRIBE NAME

7. UNIT AGREEMENT NAME

8. FARM OR LEASE NAME

TEXACO FEDERAL

9. WELL NO.

1

10. FIELD AND POOL, OR WILDCAT

WILDCAT

11. SEC., T., R., M., OR BLK.
AND SURVEY OR AREA

SEC.4, T.25 S., R.36 E.

12. COUNTY OR PARISH

LEA

13. STATE

NEW MEXICO

APPLICATION FOR PERMIT TO DRILL, DEEPEN, OR PLUG BACK

1a. TYPE OF WORK

DRILL ☒DEEPEN ☐PLUG BACK ☐

b. TYPE OF WELL

OIL
WELL ☒GAS
WELL ☐

OTHER

SINGLE
ZONE ☒MULTIPLE
ZONE ☐

2. NAME OF OPERATOR

MARALO, INC.

3. ADDRESS OF OPERATOR

P. O. BOX 832, MIDLAND, TEXAS 79702

4. LOCATION OF WELL (Report location clearly and in accordance with any State requirements.*)

At surface

330' FNL AND 2310' FWL OF SECTION 4

At proposed prod. zone

14. DISTANCE IN MILES AND DIRECTION FROM NEAREST TOWN OR POST OFFICE*

6 MILES NORTHWEST OF JAL, NEW MEXICO

15. DISTANCE FROM PROPOSED*

LOCATION TO NEAREST

PROPERTY OR LEASE LINE, FT.

(Also to nearest drlg. unit line, if any)

330'

16. NO. OF ACRES IN LEASE

2402.46

17. NO. OF ACRES ASSIGNED
TO THIS WELL

40

18. DISTANCE FROM PROPOSED LOCATION*

TO NEAREST WELL, DRILLING, COMPLETED,
OR APPLIED FOR, ON THIS LEASE, FT.

-

19. PROPOSED DEPTH

4100'

20. ROTARY OR CABLE TOOLS

ROTARY

21. ELEVATIONS (Show whether DP, RT, GR, etc.)

3214.5 GL

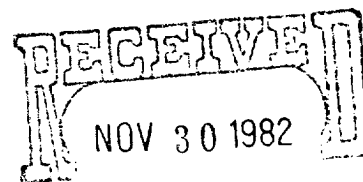
22. APPROX. DATE WORK WILL START*

UPON APPROVAL

23.

PROPOSED CASING AND CEMENTING PROGRAM

| SIZE OF HOLE | SIZE OF CASING | WEIGHT PER FOOT | SETTING DEPTH | QUANTITY OF CEMENT |
|--------------|----------------|-----------------|---------------|-------------------------|
| 11" | 8-5/8" | 24# | 1500' | SUFFICIENT TO CIRCULATE |
| 7-7/8" | 5-1/2" | 14# | 4100' | TO FILL TO BASE OF SALT |

AFTER SETTING PRODUCTION CASING, PAY ZONE WILL BE PERFORATED
AND STIMULATED AS NECESSARY.SEE ATTACHED FOR: SUPPLEMENTAL DRILLING DATA
BOP SKETCH
SURFACE USE AND OPERATIONS PLAN
OPERATOR-LAND OWNER AGREEMENT

IN ABOVE SPACE DESCRIBE PROPOSED PROGRAM: If proposal is to deepen or plug back, give data on present productive zone and proposed new productive zone. If proposal is to drill or deepen directionally, give pertinent data on subsurface locations and measured and projected depths. Give blowout preventer program, if any.

24.

SIGNED

Arthur R. Brown

Agent for
MARALO, INC.

DATE NOVEMBER 29, 1982

(This space for Federal or State use only)

APPROVED

(Orig. Sgd.) GEORGE H. STEWART

PERMIT NO.

APPROVAL DATE

DEC 8 1982

APPROVED BY

TITLE

DATE

CONDITIONS OF APPROVAL, IF ANY:

JAMES A. GILLHAM
DISTRICT SUPERVISOR

RECEIVED
DEC 10 1982
O.C.D.
HOBBS OFFICE

NEW MEXICO OIL CONSERVATION COMMISSION
WELL LOCATION AND ACREAGE DEDICATION PLAT

Form C-102
Supersedes C-128
Effective 1-1-65

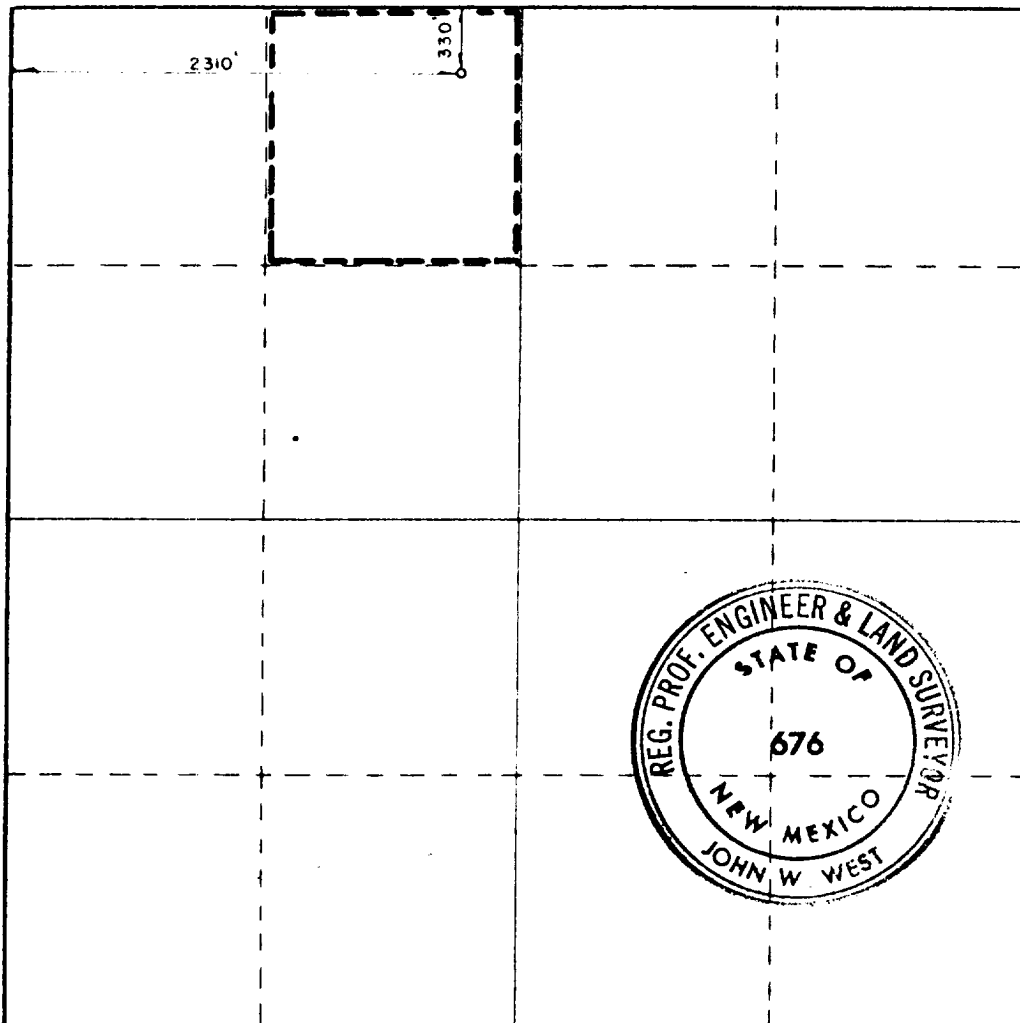
All distances must be from the outer boundaries of the Section

| | | | | | |
|---|--|------------------------|-----------------------------|---------------------------------------|----------------------|
| Operator MARALO, INC. | | | Lease TEXACO FED. | | Well No. 1 |
| Unit Letter C | Section 4 | Township 25S | Range 36E | County LEA | |
| Actual Footage Location of Well: 330 feet from the NORTH line and 2310 feet from the WEST line | | | | | |
| Ground Level Elev. 3214.5 | Producing Formation SEVEN RIVERS | | Pool WILDCAT | Dedicated Acreage: 40 Acres | |

1. Outline the acreage dedicated to the subject well by colored pencil or hachure marks on the plat below.
2. If more than one lease is dedicated to the well, outline each and identify the ownership thereof (both as to working interest and royalty).
3. If more than one lease of different ownership is dedicated to the well, have the interests of all owners been consolidated by communitization, unitization, force-pooling, etc?
☐ Yes ☐ No If answer is "yes," type of consolidation _____

If answer is "no," list the owners and tract descriptions which have actually been consolidated. (Use reverse side of this form if necessary.) _____

No allowable will be assigned to the well until all interests have been consolidated (by communitization, unitization, forced-pooling, or otherwise) or until a non-standard unit, eliminating such interests, has been approved by the Commission.



CERTIFICATION

I hereby certify that the information contained herein is true and complete to the best of my knowledge and belief.

Name *Arthur R. Brown*
Arthur R. Brown

Position

Agent for

Company

MARALO, INC.

Date

NOVEMBER 29, 1982

I hereby certify that the well location shown on this plat was plotted from field notes of actual surveys made by me or under my supervision, and that the same is true and correct to the best of my knowledge and belief.

Date Surveyed

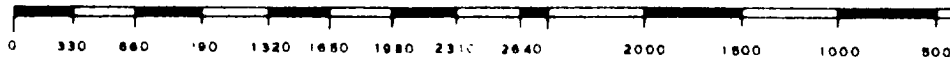
11/20/82

Registered Professional Engineer and/or Land Surveyor

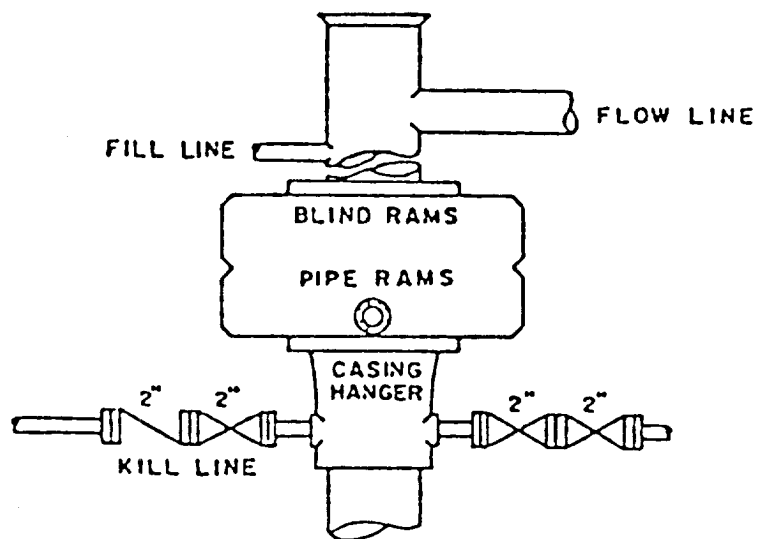
John W. West

Certificate No.

JOHN W. WEST N.M. NO. 676



RECEIVED
DEC 10 1982
HOBBS OFFICE



BOP STACK

SERIES 900

DEPTH INTERVAL

BELOW 8-5/8" CASING SEAT

BOP ARRANGEMENT

RECEIVED
DEC 10 1982
HEAD OFFICE