

NEW MEXICO OIL CONSERVATION COMMISSION
WELL LOCATION AND ACREAGE DEDICATION PLAT

Form C-102
Supersedes C-128
Effective 1-1-65

All distances must be from the outer boundaries of the Section.

Operator Cities Service Oil & Gas Corp.		Lease Thomas "A"		Well No. 4
Tract Letter 0	Section 19	Township 24 South	Range 37 East	County Lea
Actual Footage Location of Well: 990 feet from the south line and 1880 feet from the east line				
Ground Level Elev. 3272.3'	Producing Formation Seven Rivers Queen	Pool Langlie Mattix 7 Rvs Queen	Dedicated Acreage: 40 Acres	

1. Outline the acreage dedicated to the subject well by colored pencil or hachure marks on the plat below.
2. If more than one lease is dedicated to the well, outline each and identify the ownership thereof (both as to working interest and royalty).
3. If more than one lease of different ownership is dedicated to the well, have the interests of all owners been consolidated by communitization, unitization, force-pooling, etc?

☐ Yes ☐ No If answer is "yes," type of consolidation _____

If answer is "no," list the owners and tract descriptions which have actually been consolidated. (Use reverse side of this form if necessary.) _____

No allowable will be assigned to the well until all interests have been consolidated (by communitization, unitization, forced-pooling, or otherwise) or until a non-standard unit, eliminating such interests, has been approved by the Commission.

Working interests of participating companies and individuals in this well are as follows:

Cities Service	71.875%
Arco	12.500%
D. Hartman	3.125%
Fluor Corp.	12.500%
	<u>100.000%</u>

CERTIFICATION

I hereby certify that the information contained herein is true and complete to the best of my knowledge and belief.

Name
Elmer Staitz
Position
Region Opr. Manager - Prod.
Company
Cities Service Oil & Gas Corp.

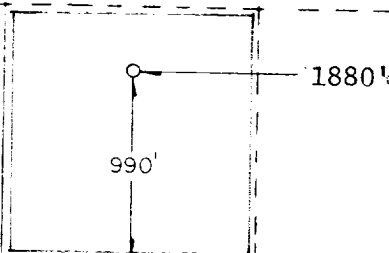
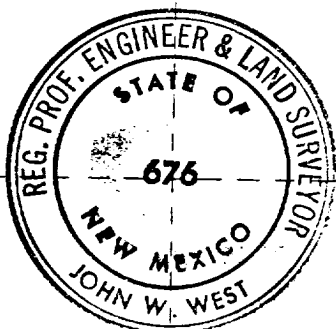
Date
November 2, 1983

I hereby certify that the well location shown on this plat was plotted from field notes of actual surveys made by me or under my supervision, and that the same is true and correct to the best of my knowledge and belief.

Date Surveyed
July 28, 1983

Registered Professional Engineer
in Oil and Surveying

John W. West
Certificate No. **JOHN W. WEST, 676**
RONALD J. EIDSON, 3239



0 330 660 990 1320 1650 1980 2310 2640 2970 3300 3630 3960 4290 4620 4950 5280 5610 5940 6270 6600

RECEIVED

NOV 2 1943

U.S. DEPT.
HOUSING OFFICE

