

P. O. BOX 2088
SANTA FE, NEW MEXICO 87501

APPLICATION FOR PERMIT TO DRILL, DEEPEN, OR PLUG BACK

23. PROPOSED CASING AND CEMENT PROGRAM					
SIZE OF HOLE	SIZE OF CASING	WEIGHT PER FOOT	SETTING DEPTH	SACKS OF CEMENT	EST. TOP
Surface	16"	65#	40'	Redi-Mix	Surface
14 3/4"	10 3/4"	45.5#	450'	390	Surface
9 7/8"	7"	29.0#	5500'	358	4300'

Connection to the _____ casing must be made by a _____ of the salt or by _____ of the casing by _____ with cement or a UV tool at the top of the salt.

Gas Not Dedicated

APPROVAL VALID FOR 180 DAYS
PERMIT EXPIRES 6/2/84
UNLESS DRILLING UNDERWAY

IN ABOVE SPACE DESCRIBE PROPOSED PROGRAM; IF PROPOSAL IS TO DEEPEN OR PLUG BACK, GIVE DATA ON PRESENT PRODUCTIVE ZONE AND PROPOSED NEW PRODUCTION ZONE. GIVE BLOWOUT PREVENTER PROGRAM, IF ANY.

hereby certify that the information above is true and complete to the best of my knowledge and belief.

Signed G. E. Tate G.E. Tate Title Division Operations Superintendent Date 11-29-83

(This space for State Use)

ORIGINAL SIGNED BY JERRY SEXTON

APPROVED BY DISTRICT SUPERVISOR TITLE _____ DATE _____

CONDITIONS OF APPROVAL, IF ANY:

DEC 2 1983

NEW MEXICO OIL CONSERVATION COMMISSION
WELL LOCATION AND ACREAGE DEDICATION PLAT

Form C-102
Supersedes C-128
Effective 1-1-65

All distances must be from the outer boundaries of the Section.

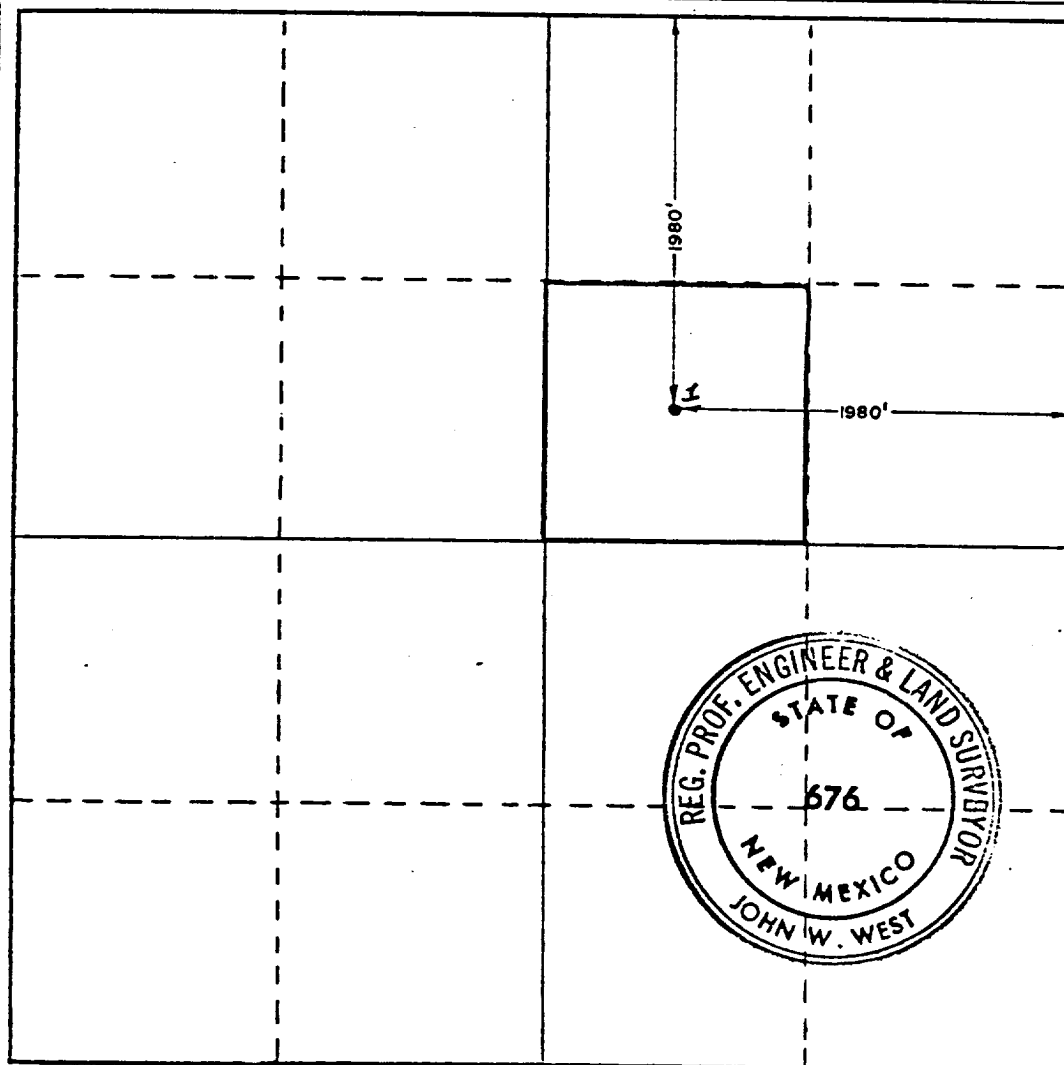
Operator THE SUPERIOR OIL COMPANY			Lease STATE "36"		Well No. 1
Unit Letter G	Section 36	Township 25 SOUTH	Range 33 EAST	County LEA	
Actual Footage Location of Well: 1980 feet from the EAST line and 1980 feet from the NORTH line					
Ground Level Elev. 3317.0	Producing Formation Delaware		Pool Wildcat	Dedicated Acreage: 40 Acres	

1. Outline the acreage dedicated to the subject well by colored pencil or hatchure marks on the plat below.
2. If more than one lease is dedicated to the well, outline each and identify the ownership thereof (both as to working interest and royalty).
3. If more than one lease of different ownership is dedicated to the well, have the interests of all owners been consolidated by communitization, unitization, force-pooling, etc?

☐ Yes ☐ No If answer is "yes," type of consolidation _____

If answer is "no," list the owners and tract descriptions which have actually been consolidated. (Use reverse side of this form if necessary.) _____

No allowable will be assigned to the well until all interests have been consolidated (by communitization, unitization, forced-pooling, or otherwise) or until a non-standard unit, eliminating such interests, has been approved by the Commission.



CERTIFICATION

I hereby certify that the information contained herein is true and complete to the best of my knowledge and belief.

G. E. Tate
Name **G. E. Tate**
Position **Division Operations Supt.**
The Superior Oil Company
Company
11-29-83
Date

I hereby certify that the well location shown on this plat was plotted from field notes of actual surveys made by me or under my supervision, and that the same is true and correct to the best of my knowledge and belief.

Date Surveyed
NOVEMBER 23, 1983
Registered Professional Engineer
and/or Land Surveyor

John W. West
Certificate No. **JOHN W. WEST, 676**
RONALD J. EIDSON, 3239



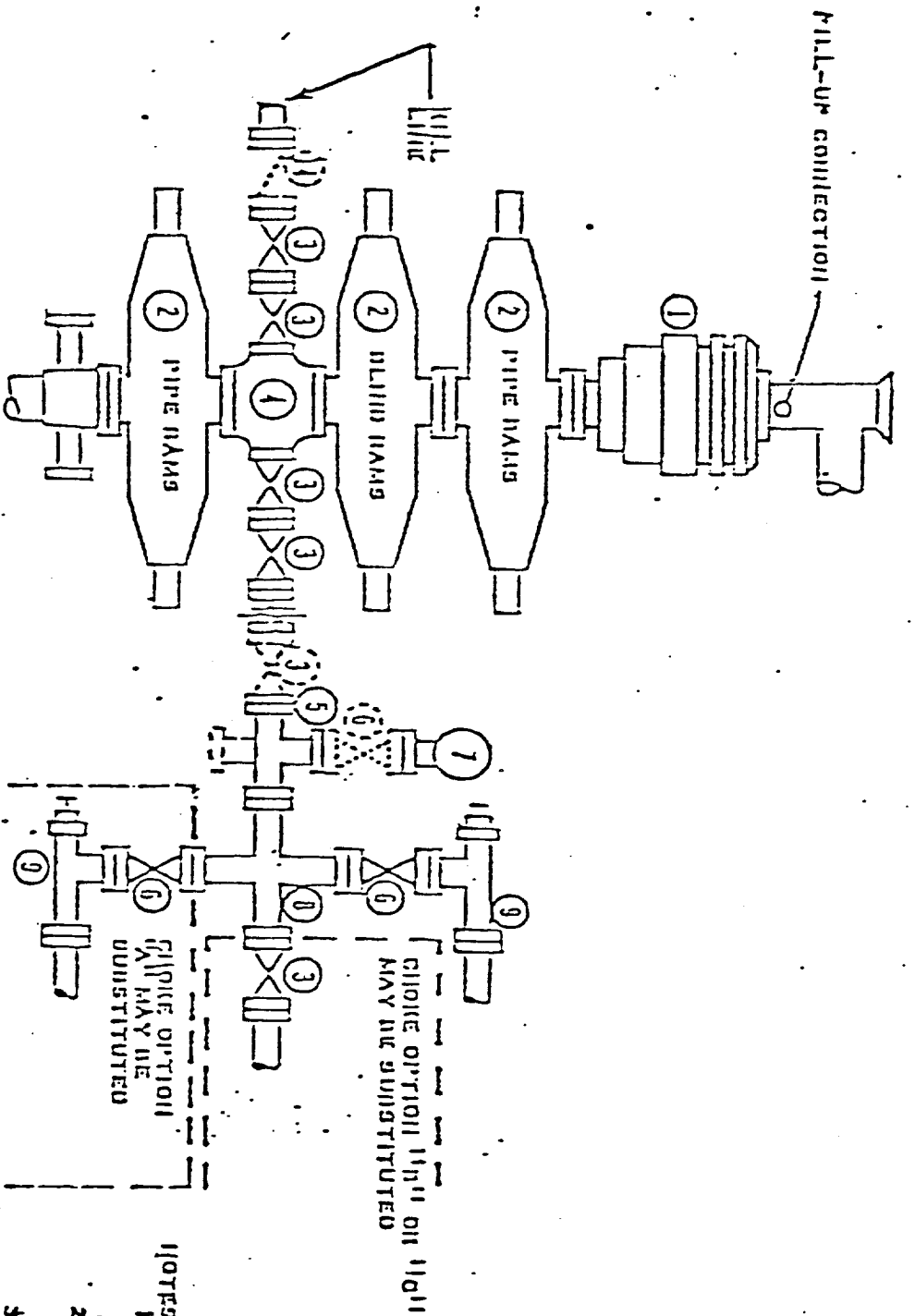
RECEIVED

NOV 30 1983

O.C.D.
HOBBS OFFICE

EXHIBIT B

OPTIONAL EQUIPMENT



1. 5000 PSI WP ON DETEN CLAMP HOPE MAY BE SUBSTITUTED FOR FLANGES
2. ONE ADJUSTABLE CHOICE MAY BE REPLACED WITH A POSITIVE CHOICE
3. VALVES MAY BE EITHER HAND OR POWER OPERATED BUT, IF POWER OPERATED, THE VALVES FLANGED TO THE HOPE MUST BE CAPABLE OF BEING OPENED AND CLOSED MANUALLY ON CLOSE OR POWER FAILURE AND BE CAPABLE OF BEING OPENED MANUALLY

5000 PSI WORKING PRESSURE
BLOWOUT PREVENTER HOPE-
(GENIES 1500 FLANGES ON DETEN

RECEIVED
DEC 1 - 1983
C.C.D.
HOBBS OFF