

NEW MEXICO OIL CONSERVATION COMMISSION
WELL LOCATION AND ACREAGE DEDICATION PLAT

Form C-102
Supersedes C-128
Effective 1-1-65

All distances must be from the outer boundaries of the Section

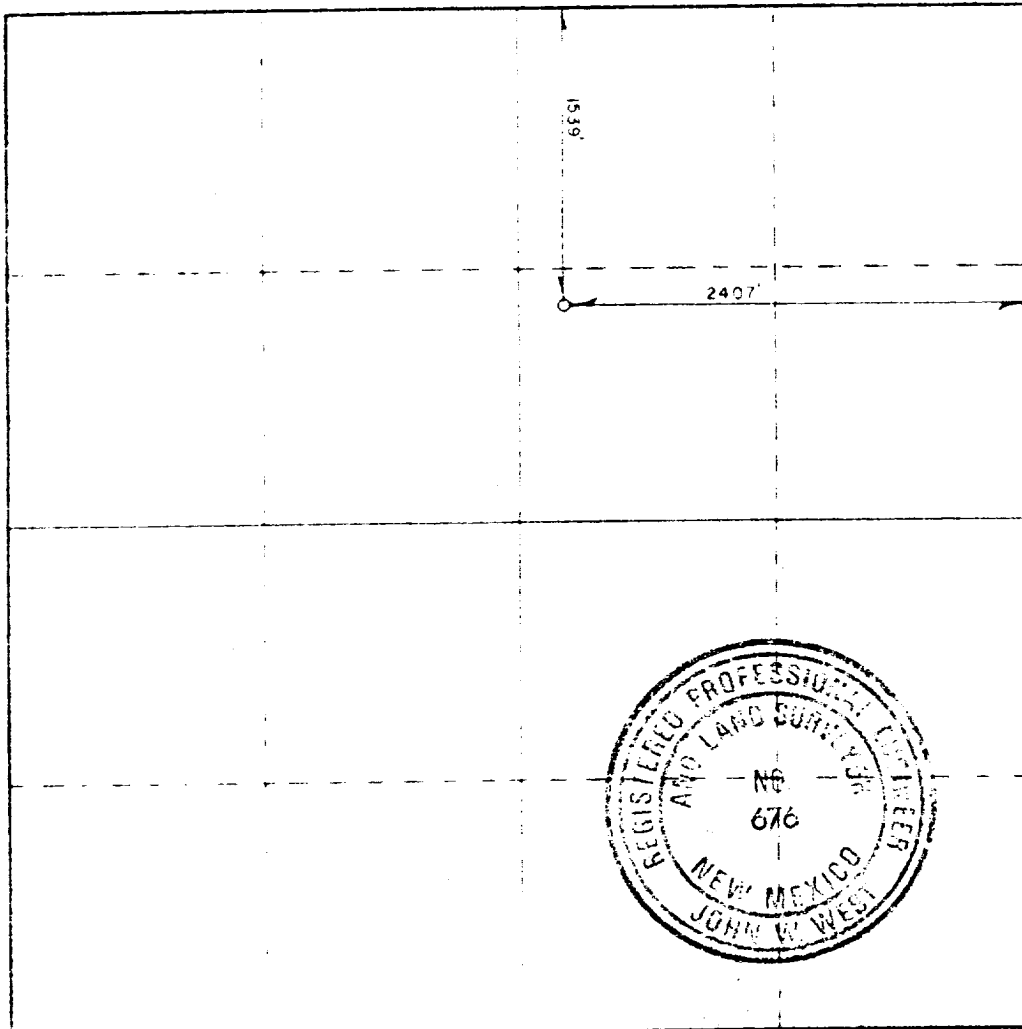
Operator AMERADA HESS CORP.			Lease LANGLIE MATTIX WOOLWORTH		Well No. 114
Tract Letter G	Section 33	Township 24S	Range 37E	County LEA	
Actual Acreage Dedication: 1 Well					
1539	feet from the	NORTH	line and	2407	feet from the EAST line
Ground Elev. Feet 3247.0	Producing Formation Queen		Pool Langlie Mattix Pool		Dedicated Acreage: 40 Acres

- 1 Outline the acreage dedicated to the subject well by colored pencil or hatchure marks on the plat below.
- 2 If more than one lease is dedicated to the well, outline each and identify the ownership thereof (both as to working interest and royalty)
- 3 If more than one lease of different ownership is dedicated to the well, have the interests of all owners been consolidated by communitization, unitization, force-pooling, etc?

☐ Yes ☐ No If answer is "yes," type of consolidation N/A

If answer is "no," list the owners and tract descriptions which have actually been consolidated (Use reverse side of this form, if necessary)

No allowable will be assigned to the well until all interests have been consolidated by communitization, unitization, forced-pooling, or otherwise or until a non-standard unit, eliminating such interests, has been approved by the Commission.



CERTIFICATION

I hereby certify that the information contained herein is true and complete to the best of my knowledge and belief

By Randall S. Howell
Associate Petroleum Engineer
Amerada Hess Corporation
Date February 2, 1984

I hereby certify that the well location shown on this plat was plotted from field notes of actual surveys made by me or under my supervision, and that the same is true and correct to the best of my knowledge and belief

Date Surveyed 12/9/83
Registered Profession of Engineer
No. 676 Survey of

Certificate No.
N.M. P.E.&L.S. #676

RECEIVED

FEB 8 1984

**O.C.D.
HOBBS OFFICE**

473