

NEW MEXICO OIL CONSERVATION COMMISSION
WELL LOCATION AND ACREAGE DEDICATION PLAT

Form O-114
Supersedes O-124
Effective 1-1-65

All distances must be from the outer boundaries of the Section

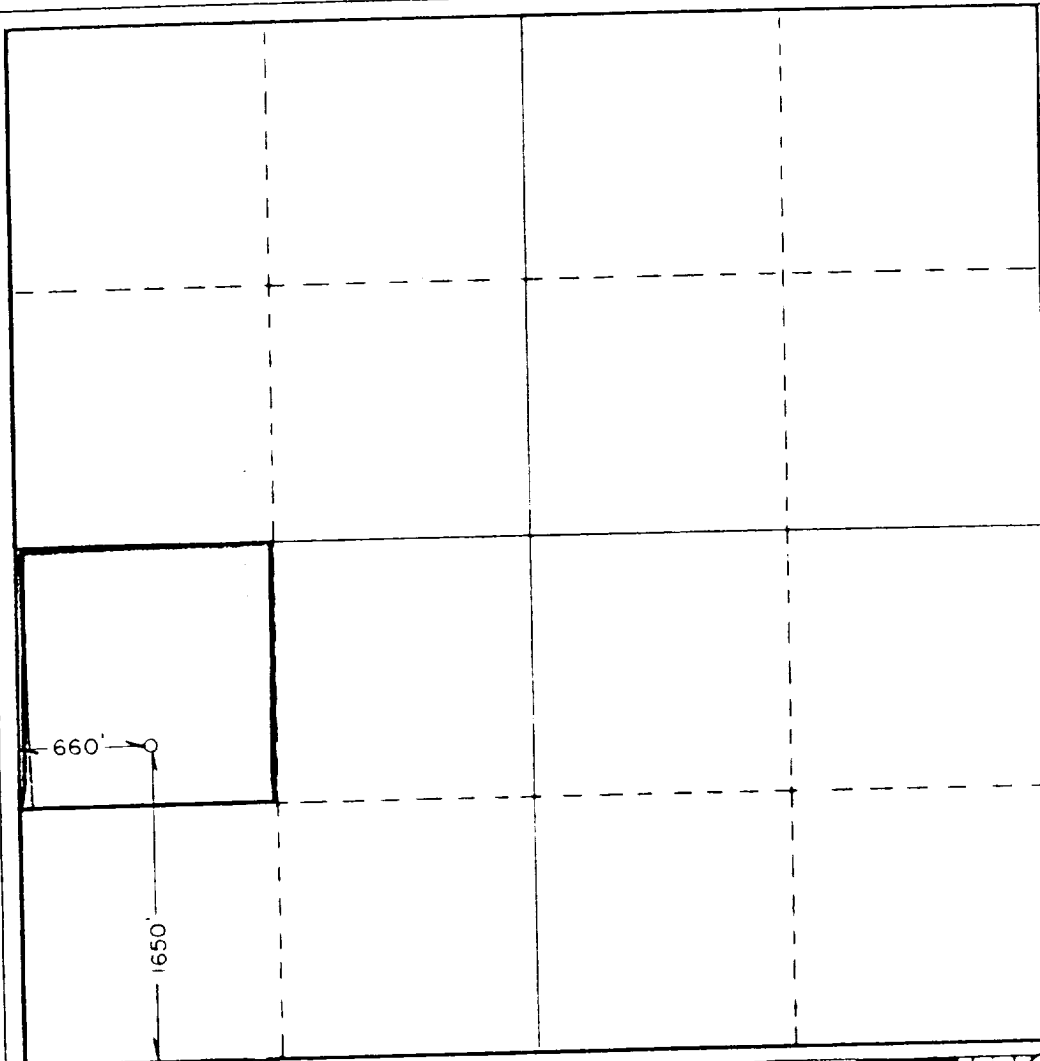
Operator Doyle Hartman		Lease Carlson Federal		Well No. 2
Tract Letter L	Section 22	Township 25 South	Range 17 East	County Lea
Acreage Dedication of Well: 1650 feet from the South line and 660 feet from the West line				
Ground Level Elev. 5150.75	Producing Formation Queen-Penrose	Pool Langlie-Mattix	Dedicated Acreage 40	

- Outline the acreage dedicated to the subject well by colored pencil or hatchure marks on the plat below.
- If more than one lease is dedicated to the well, outline each and identify the ownership thereof (both as to working interest and royalty).
- If more than one lease of different ownership is dedicated to the well, have the interests of all owners been consolidated by communitization, unitization, force-pooling, etc?

☐ Yes ☐ No If answer is "yes," type of consolidation _____

If answer is "no," list the owners and tract descriptions which have actually been consolidated. (Use reverse side of this form if necessary.) _____

No allowable will be assigned to the well until all interests have been consolidated (by communitization, unitization, forced-pooling, or otherwise) or until a non-standard unit, eliminating such interests, has been approved by the Commission.



CERTIFICATION

I hereby certify that the information contained herein is true and complete to the best of my knowledge and belief.

Larry A. Nermyr

Name

Larry A. Nermyr

Position

Engineer

Company

Doyle Hartman

Date

July 26, 1985

I hereby certify that the well location shown on this plat was plotted from field notes of actual surveys made by me or under my supervision, and that the same is true and correct to the best of my knowledge and belief.

Date Surveyed

July 22, 1985

Registered Professional Engineer
and Land Surveyor

John W. West

Certificate No. **JOHN W. WEST, 676**

RONALD J. EIDSON, 3239