

NEW MEXICO OIL CONSERVATION COMMISSION
WELL LOCATION AND ACREAGE DEDICATION AT

Form C-102
 Supersedes C-128
 Effective 1-4-85

State Les. No. _____

Federal Les. No. LC-052956

All distances must be from the outer boundaries of the Section.

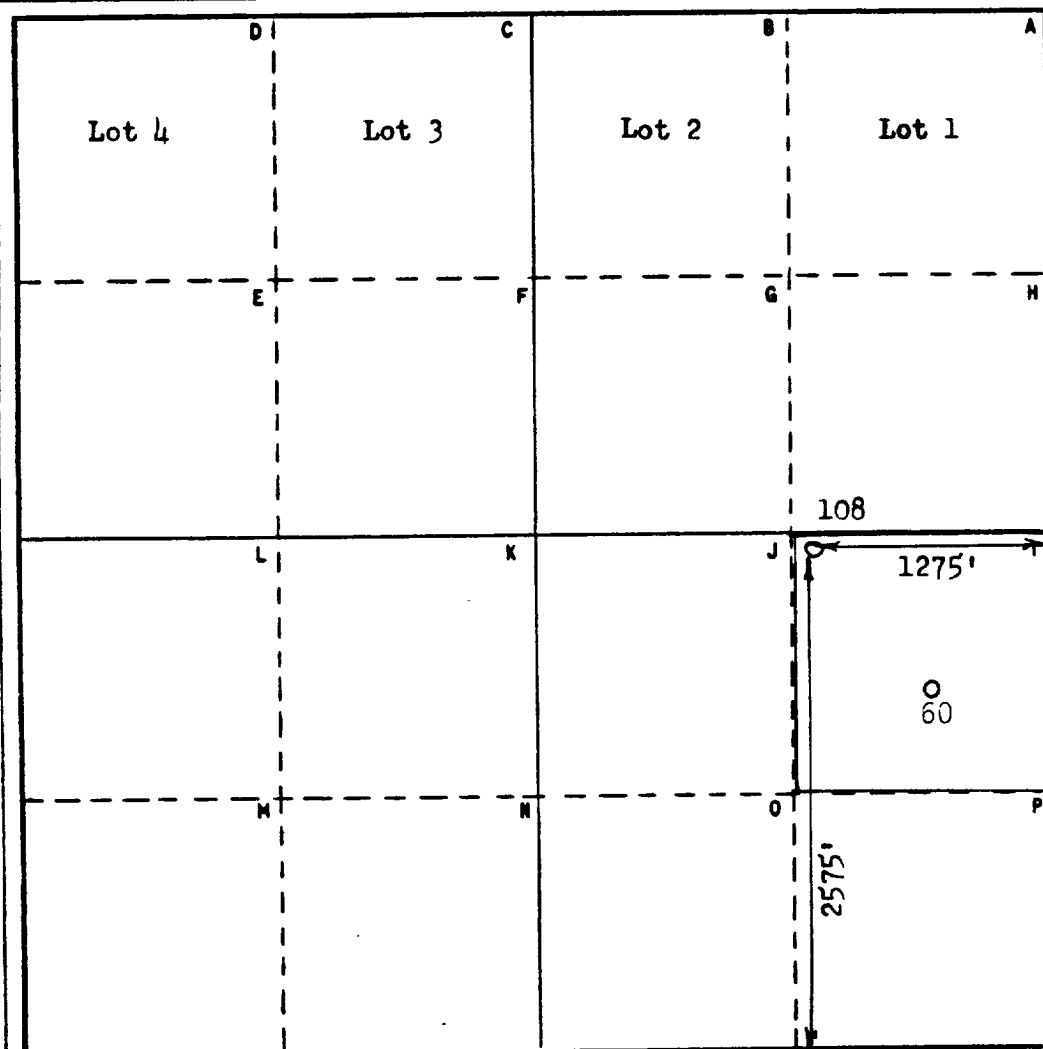
Operator Union Texas Petroleum Corporation			Lease Langlie-Jal Unit		Well No. 108
Unit Letter I	Section 5	Township T-25-S	Range R-37-E	County Lea	
Actual Footage Location of Well: 2575 feet from the South line and 1275 feet from the East line					
Ground Level Elev: 3235'	Producing Formation Langlie-Mattix		Pool Queen		Dedicated Acreage: 40 Acres

1. Outline the acreage dedicated to the subject well by colored pencil or hachure marks on the plat below.
2. If more than one lease is dedicated to the well, outline each and identify the ownership thereof (both as to working interest and royalty).
3. If more than one lease of different ownership is dedicated to the well, have the interests of all owners been consolidated by communitization, unitization, force-pooling, etc?

☒ Yes ☐ No If answer is "yes," type of consolidation Secondary Recovery Waterflood Unit

If answer is "no," list the owners and tract descriptions which have actually been consolidated. (Use reverse side of this form if necessary.) _____

No allowable will be assigned to the well until all interests have been consolidated (by communitization, unitization, forced-pooling, or otherwise) or until a non-standard unit, eliminating such interests, has been approved by the Commission.



CERTIFICATION

I hereby certify that the information contained herein is true and complete to the best of my knowledge and belief.

Name Lee White
 Position Regulatory Administrator
 Company Union Texas Pet. Corp.
 Date Sept. 6, 1985

I hereby certify that the well location shown on this plat was plotted on field notes of actual surveys made by me or under my supervision, and that the same is true and correct to the best of my knowledge and belief.



Date Surveyed Sept. 4, 1985
 Registered Professional Engineer and/or Land Surveyor

Certificate No. 6157

W. J. Richmond



3 Miles N of Jal, New Mexico

RECEIVED
OCT 10 1985
O.C.D. OFFICE
HOUSES