

## NEW MEXICO OIL CONSERVATION COMMISSION

Form C-102  
Supersedes C-128  
Effective 1-4-85

State Loc. No. \_\_\_\_\_ WELL LOCATION AND ACREAGE DEDICATION AT

Federal Loc. No. LC-052956

All distances must be from the outer boundaries of the Section.

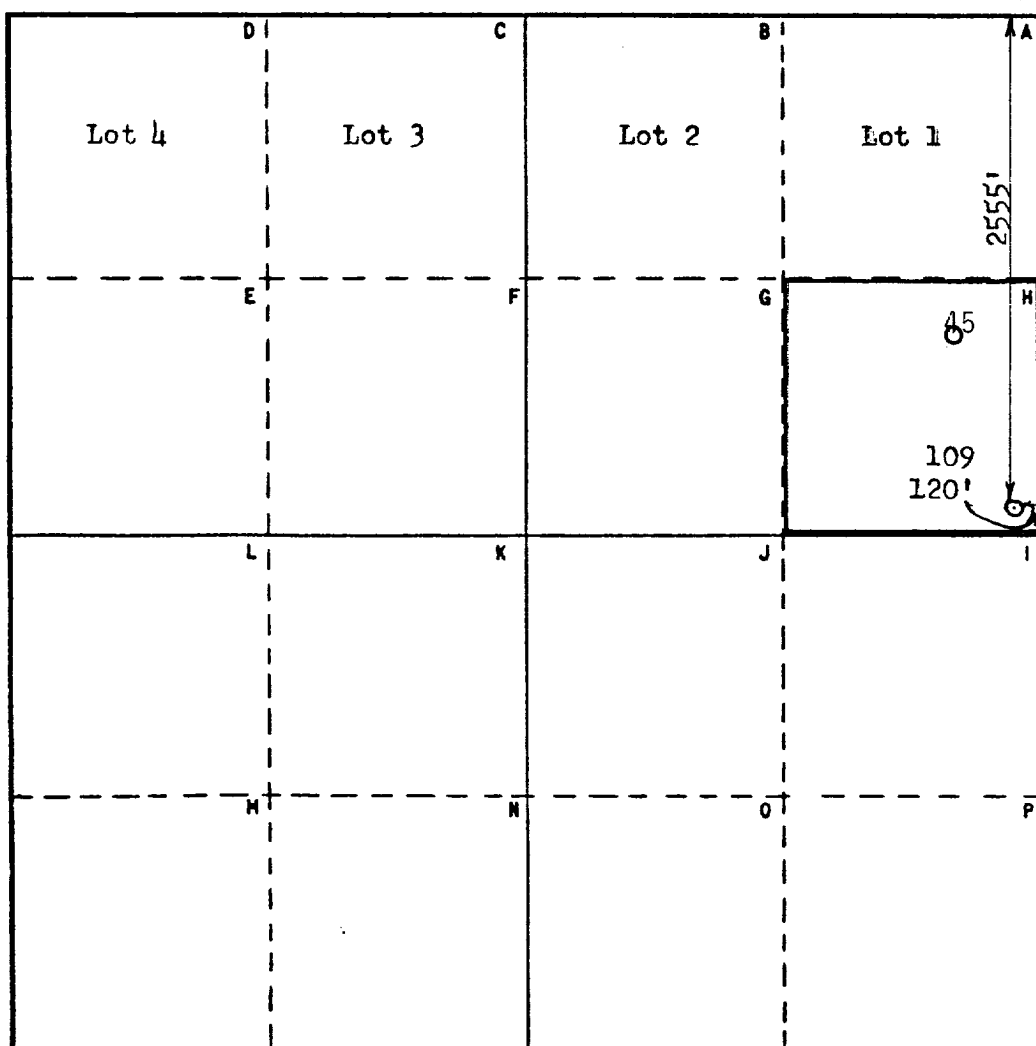
Operator Union Texas Petroleum Corporation		Lease Langlie-Jal Unit		Well No. 109
Unit Letter H	Section 5	Township T-25-S	Range R-37-E	County Lea
Actual Footage Location of Well: 2555 feet from the North line and 120 feet from the East line				
Ground Level Elev. 3233'	Producing Formation Langlie-Mattix		Pool Queen	Dedicated Acreage: 40 Acres

1. Outline the acreage dedicated to the subject well by colored pencil or hachure marks on the plat below.
2. If more than one lease is dedicated to the well, outline each and identify the ownership thereof (both as to working interest and royalty).
3. If more than one lease of different ownership is dedicated to the well, have the interests of all owners been consolidated by communitization, unitization, force-pooling, etc?

☒ Yes ☐ No If answer is "yes," type of consolidation Secondary Recovery Waterflood Unit

If answer is "no," list the owners and tract descriptions which have actually been consolidated. (Use reverse side of this form if necessary.) \_\_\_\_\_

No allowable will be assigned to the well until all interests have been consolidated (by communitization, unitization, forced-pooling, or otherwise) or until a non-standard unit, eliminating such interests, has been approved by the Commission.



## CERTIFICATION

I hereby certify that the information contained herein is true and complete to the best of my knowledge and belief.

Name Don White  
Position Regulatory Administrator  
Company Union Texas Pet. Corp.  
Date Sept. 6, 1985

I hereby certify that the well location shown on this plat was plotted from field notes of actual surveys made by me or under my supervision, and that the same is true and correct to the best of my knowledge and belief.

Date Surveyed Sept. 4, 1985  
Registered Professional Engineer and/or Land Surveyor

Certificate No. 6157

3 Miles N of Jal, New Mexico

RECEIVED  
OCT 10 1985  
HOBBS'S O.C.C.  
OFFICE