

**NEW MEXICO OIL CONSERVATION COMMISSION**  
**WELL LOCATION AND ACREAGE DEDICATION PLAT**

Form C-102  
 Supersedes C-128  
 Effective 1-1-85

State Les. No. \_\_\_\_\_

Federal Les. No. LC-052956

All distances must be from the outer boundaries of the Section.

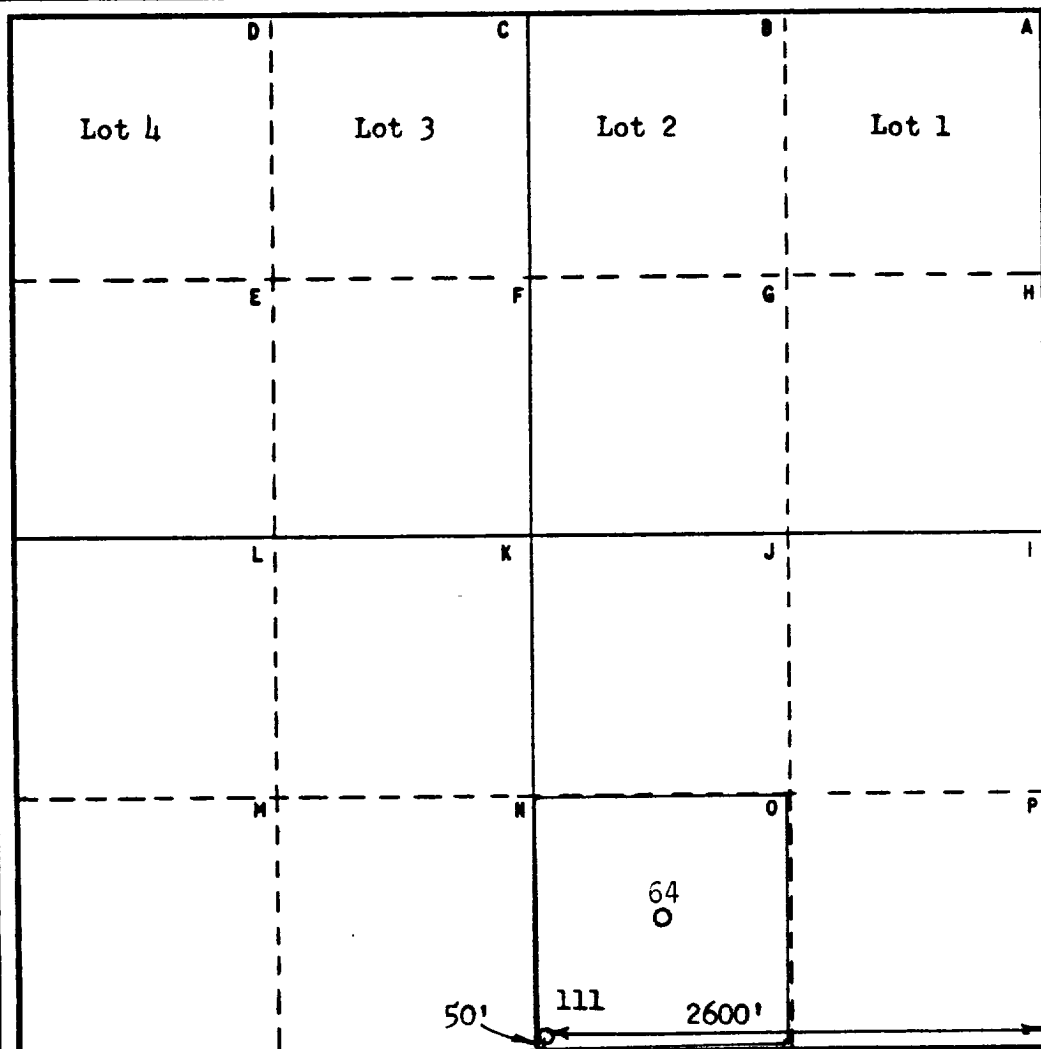
Operator <b>Union Texas Petroleum Corporation</b>			Lessee <b>Langlie-Jal Unit</b>		Well No. <b>111</b>
Unit Letter <b>0</b>	Section <b>5</b>	Township <b>T-25-S</b>	Range <b>R-37-E</b>	County <b>Lea</b>	
Actual Footage Location of Well: <b>50</b> feet from the <b>South</b> line and <b>2600</b> feet from the <b>East</b> line					
Ground Level Elev. <b>3183'</b>	Producing Formation <b>Langlie-Mattix</b>		Pool <b>Queen</b>		Dedicated Acreage: <b>40</b> Acres

1. Outline the acreage dedicated to the subject well by colored pencil or hatchure marks on the plat below.
2. If more than one lease is dedicated to the well, outline each and identify the ownership thereof (both as to working interest and royalty).
3. If more than one lease of different ownership is dedicated to the well, have the interests of all owners been consolidated by communitization, unitization, force-pooling, etc?

☒ Yes    ☐ No    If answer is "yes," type of consolidation Secondary Recovery Waterflood Unit

If answer is "no," list the owners and tract descriptions which have actually been consolidated. (Use reverse side of this form if necessary.) \_\_\_\_\_

No allowable will be assigned to the well until all interests have been consolidated (by communitization, unitization, forced-pooling, or otherwise) or until a non-standard unit, eliminating such interests, has been approved by the Commission.

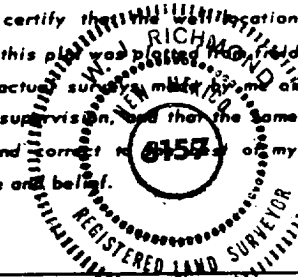


**CERTIFICATION**

I hereby certify that the information contained herein is true and complete to the best of my knowledge and belief.

Name *Ben White*  
 Position Regulatory Administrator  
 Company Union Texas Pet. Corp.  
 Date Sept. 6, 1985

I hereby certify that the well location shown on this plat was plotted from field notes of actual surveys made by me or under my supervision, and that the same is true and correct to the best of my knowledge and belief.



Date Surveyed Sept. 4, 1985  
 Registered Professional Engineer and/or Land Surveyor

*W.J. Richmond*  
 Certificate No. 6157

RECEIVED  
OCT 10 1985  
O.C.D.  
HOBBS OFFICE