

NEW MEXICO OIL CONSERVATION COMMISSION
WELL LOCATION AND ACREAGE DEDICATION PLAT

Form O-112
Supersedes O-124
Effective 1-1-85

All distances must be from the outer boundaries of the Section

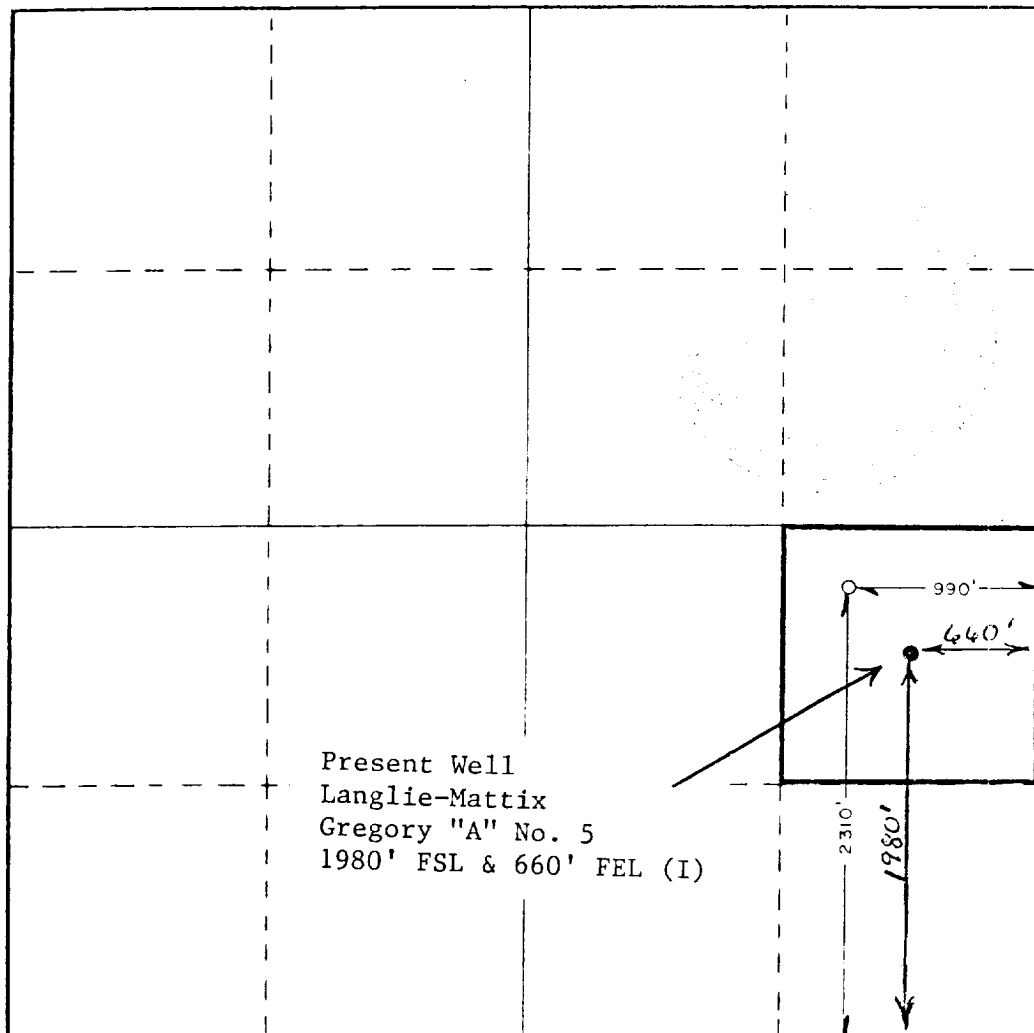
Operator DOYLE HARTMAN		Lessee GREGORY "A"		Well No. 5	
Section 33	Township 25 SOUTH	Range 37 EAST	County LEA		
Actual Surface Location of Well: 2310 feet from the SOUTH line and 660 feet from the EAST line					
Ground Level Elev. 2909.5'	Producing Formation QUEEN-PENROSE	Pool LANGLIE-MATTIX	Dedicated Acreage 40 Acres		

1. Outline the acreage dedicated to the subject well by colored pencil or hatchure marks on the plat below.
2. If more than one lease is dedicated to the well, outline each and identify the ownership thereof (both as to working interest and royalty).
3. If more than one lease of different ownership is dedicated to the well, have the interests of all owners been consolidated by communitization, unitization, force-pooling, etc?

☐ Yes ☐ No If answer is "yes," type of consolidation _____

If answer is "no," list the owners and tract descriptions which have actually been consolidated. (Use reverse side of this form if necessary.) _____

No allowable will be assigned to the well until all interests have been consolidated (by communitization, unitization, forced-pooling, or otherwise) or until a non-standard unit, eliminating such interests, has been approved by the Commission.



CERTIFICATION

I hereby certify that the information contained herein is true and complete to the best of my knowledge and belief

Larry A. Nermyr

Name
Larry A. Nermyr

Position
Engineer

Company
Doyle Hartman

Date
November 5, 1985

I hereby certify that the well location shown on this plat was plotted from field notes of actual surveys made by me or under my supervision, and that the same is true and correct to the best of my knowledge and belief.

Date Surveyed
OCTOBER 30, 1985

Registered Professional Engineer
and Land Surveyor

Ronald J. Eidson

Certificate No. **JOHN W. WEST.** 676
RONALD J. EIDSON. 3239