

NEW MEXICO OIL CONSERVATION COMMISSION
WELL LOCATION AND ACREAGE DEDICATION PLAT

Form C-102
Supersedes C-128
Effective 1-1-65

All distances must be from the outer boundaries of the Section

Operator SUN EXPLORATION AND PRODUCTION COMPANY	Lease PITCHFORK FEDERAL	Well No. 1
---	-----------------------------------	----------------------

Unit Letter C	Section 11	Township 25 SOUTH	Range 34 EAST	County LEA
-------------------------	----------------------	-----------------------------	-------------------------	----------------------

Actual Footage Location of Well:
660 feet from the **NORTH** line and **1980** feet from the **WEST** line

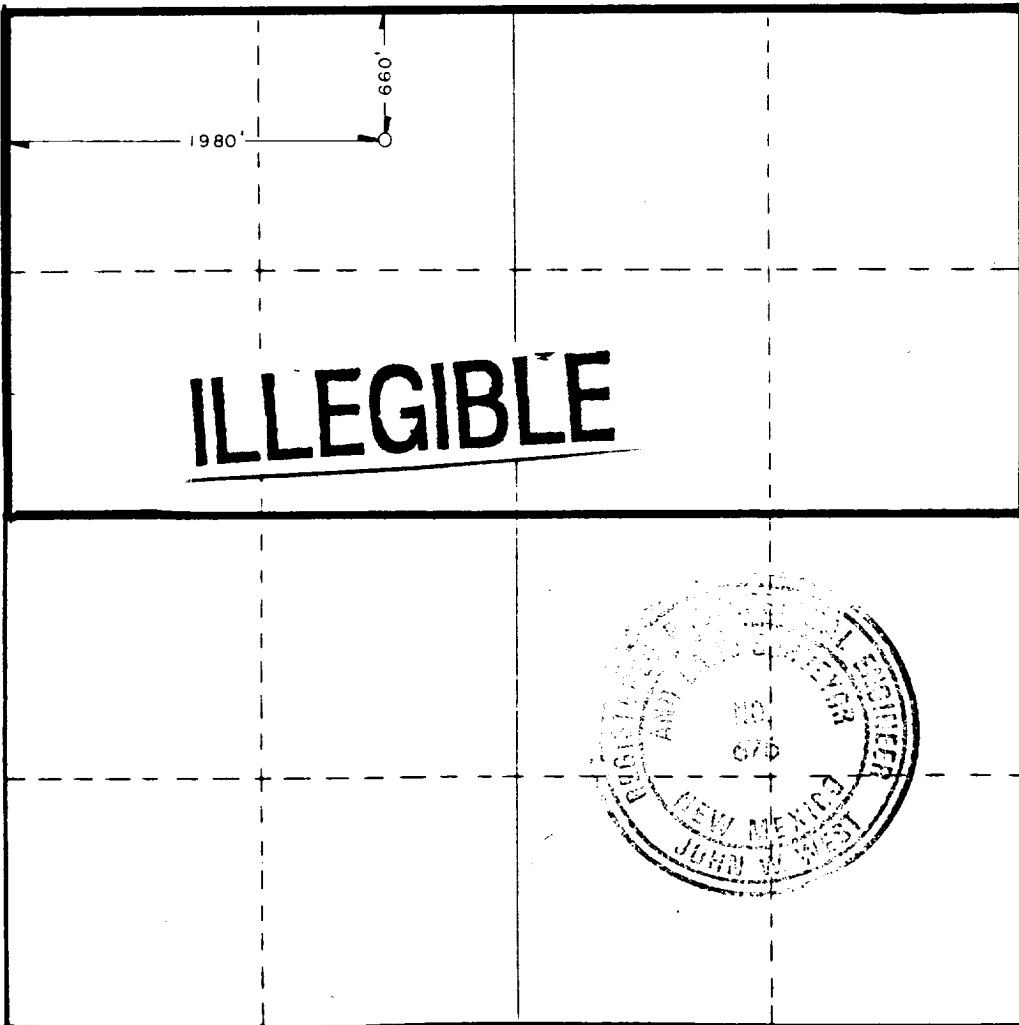
Ground Level Elev. 3361.0'	Producing Formation Morrow	Pool Pitchfork Ranch	Dedicated Acreage: 320 N/2 Acres
--------------------------------------	--------------------------------------	--------------------------------	--

1. Outline the acreage dedicated to the subject well by colored pencil or hachure marks on the plat below.
2. If more than one lease is dedicated to the well, outline each and identify the ownership thereof (both as to working interest and royalty).
3. If more than one lease of different ownership is dedicated to the well, have the interests of all owners been consolidated by communitization, unitization, force-pooling, etc?

Yes No If answer is "yes," type of consolidation _____

If answer is "no," list the owners and tract descriptions which have actually been consolidated. (Use reverse side of this form if necessary.) _____

No allowable will be assigned to the well until all interests have been consolidated (by communitization, unitization, forced-pooling, or otherwise) or until a non-standard unit, eliminating such interests, has been approved by the Commission.



CERTIFICATION

I hereby certify that the information contained herein is true and complete to the best of my knowledge and belief.

Maria L. Perez
Name

Maria L. Perez

Position
Sr. Acctng. Asst.

Company
Sun Expl. & Prod. Co.

Date
3-20-86

I hereby certify that the well location shown on this plat was plotted from field notes of actual surveys made by me or under my supervision, and that the same is true and correct to the best of my knowledge and belief.

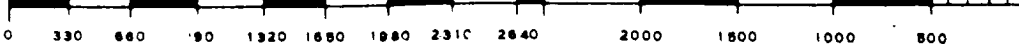
Date Surveyed
MARCH 13, 1986

Registered Professional Engineer and/or Land Surveyor

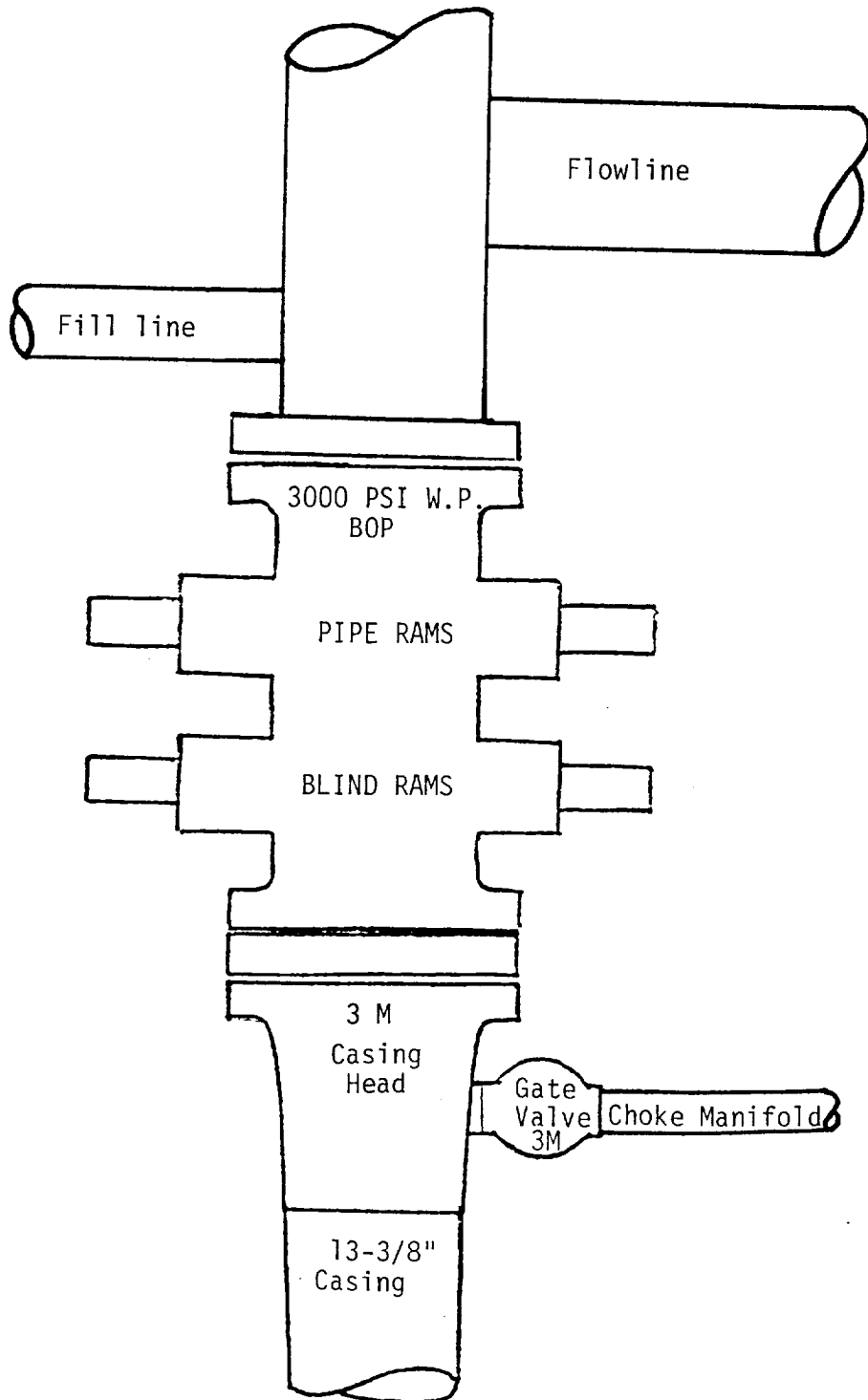
John W. West

Certificate No. **JOHN W. WEST, 676**
RONALD J. EIDSON, 3239

91746

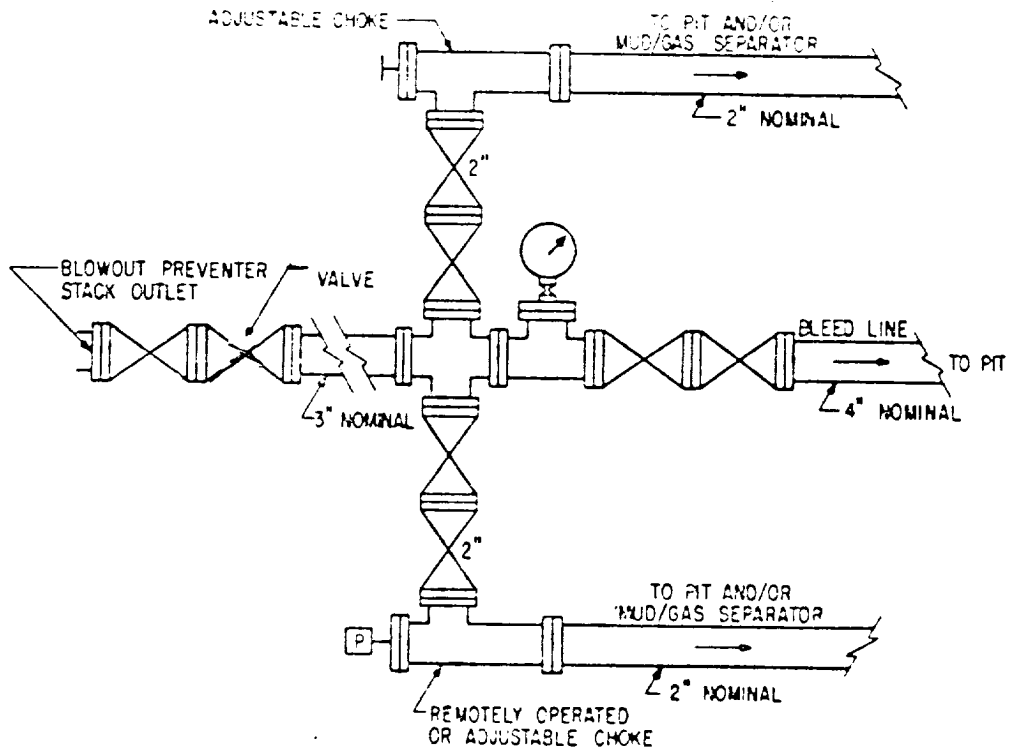


RECEIVED
MAR 31 1986
O.C.D.
HOBBS OFFICE



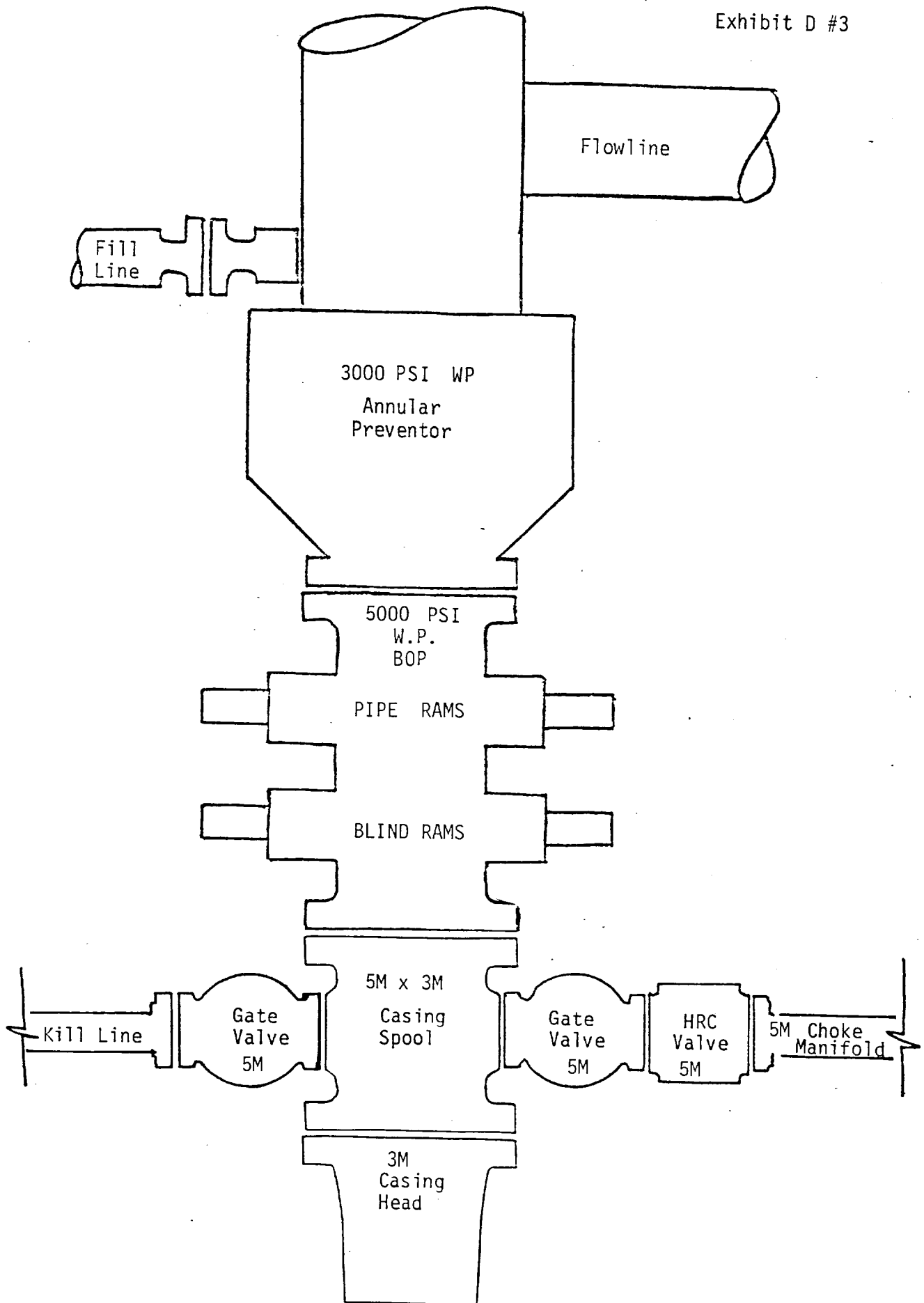
MINIMUM BOP REQUIREMENTS FROM 600' - 5300'

RECEIVED
MAR 31 1986
O.C.D.
HOBB'S OFFICE



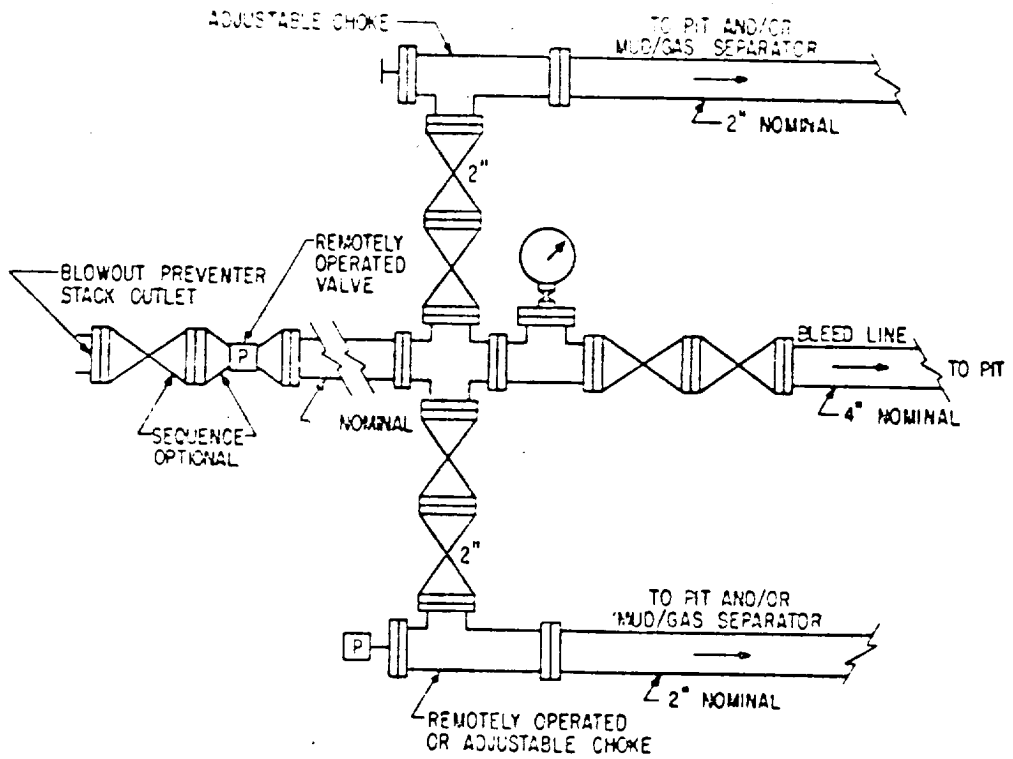
3000 PSI W.P.

MINIMUM CHOKE MANIFOLD REQUIREMENTS 600' - 5300'



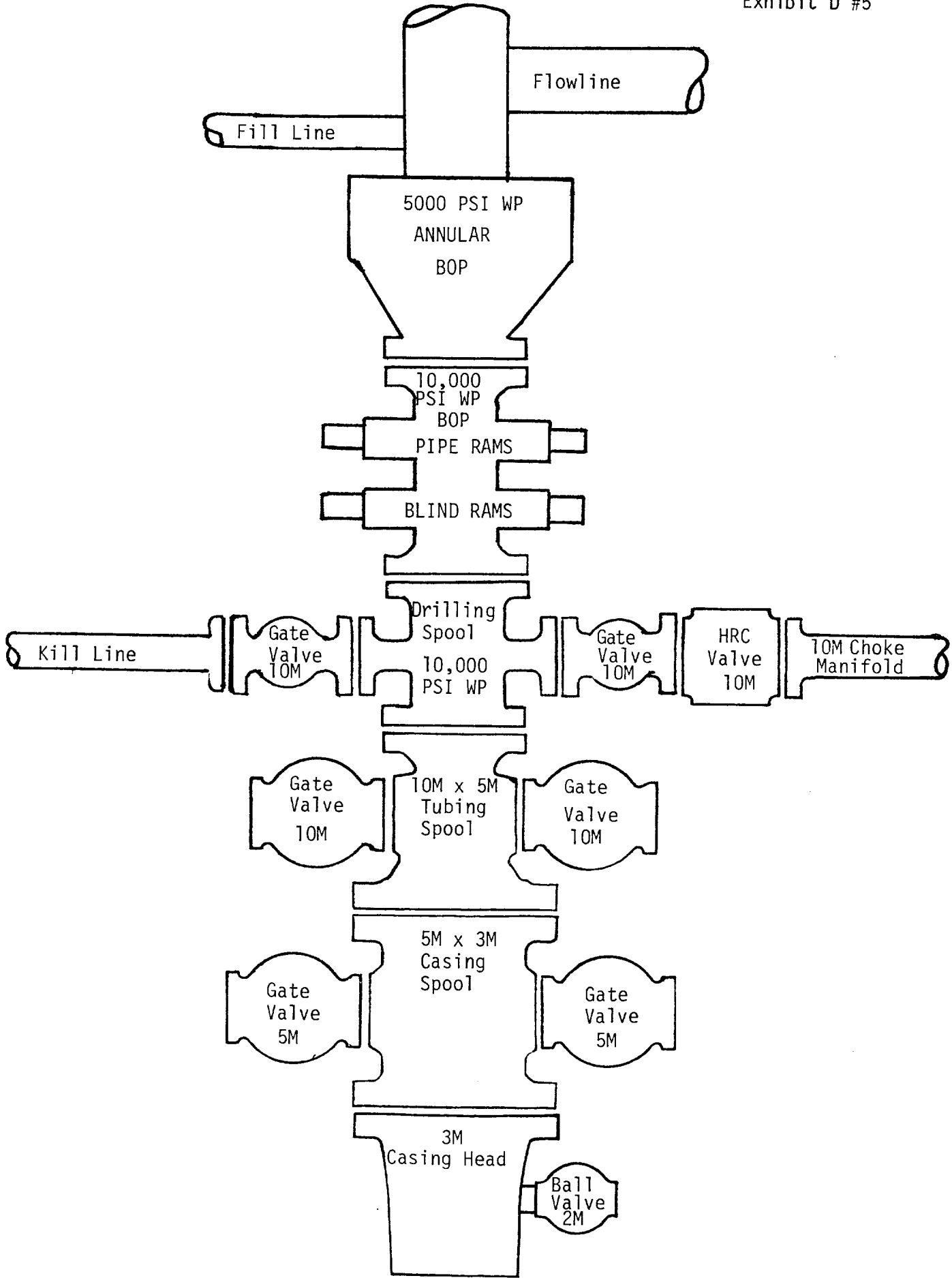
MINIMUM BOP REQUIREMENTS FROM 5300' - 13,250'

RECEIVED
MAR 31 1986
S. C. B.
HOBBS OFFICE

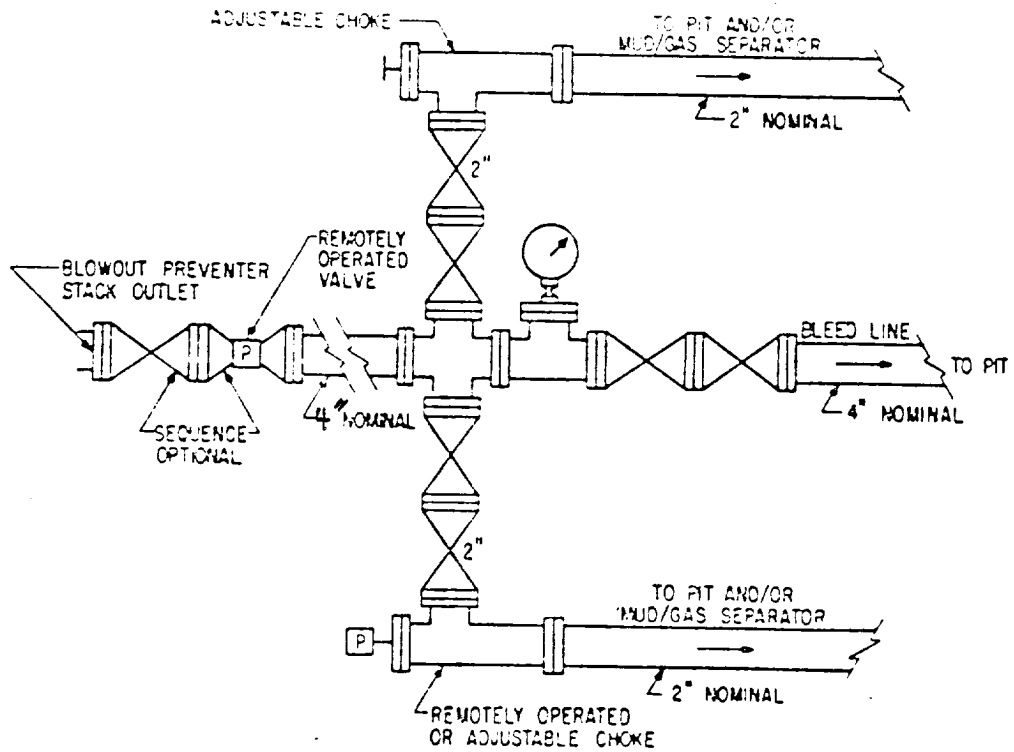


5000 PSI W.P.

MINIMUM CHOKE MANIFOLD REQUIREMENTS 5300' - 13,250'



MINIMUM BOP REQUIREMENTS FROM 13,250' - T.D.



10,000 PSI W.P.

MINIMUM CHOKE MANIFOLD REQUIREMENTS 13,250' - T.D.

RECEIVED
MAR 31 1986
C.C.P.
HOBBS OFFICE

Rec'd
7-31-86

111