

UNIT STATES  
DEPARTMENT OF THE INTERIOR  
BUREAU OF LAND MANAGEMENT

(Other instructions  
reverse side)

Budget Bureau No. 1004-0136  
Expires August 31, 1985

APPLICATION FOR PERMIT TO DRILL, DEEPEN, OR PLUG BACK

1a. TYPE OF WORK

DRILL ☒

DEEPEN ☐

PLUG BACK ☐

b. TYPE OF WELL

OIL  
WELL ☒

GAS  
WELL ☐

OTHER

SINGLE  
ZONE ☐

MULTIPLE  
ZONE ☐

2. NAME OF OPERATOR

SIRGO-COLLIER, INC.

3. ADDRESS OF OPERATOR

P. O. Box 3531, Midland, Texas 79702

4. LOCATION OF WELL (Report location clearly and in accordance with any State requirements.)

At surface

2310' FSL, 2600' FEL, Section 30, T24S, R38E,

At proposed prod. zone

Queen

14. DISTANCE IN MILES AND DIRECTION FROM NEAREST TOWN OR POST OFFICE\*

7 miles Northeast of Jal, New Mexico.

10. DISTANCE FROM PROPOSED\*

LOCATION TO NEAREST  
PROPERTY OR LEASE LINE, FT.  
(Also to nearest drlg. unit line, if any)

18. DISTANCE FROM PROPOSED LOCATION\*  
TO NEAREST WELL, DRILLING, COMPLETED,  
OR APPLIED FOR, ON THIS LEASE, FT.

16. NO. OF ACRES IN LEASE

320

19. PROPOSED DEPTH

3900

17. NO. OF ACRES ASSIGNED  
TO THIS WELL

40

20. ROTARY OR CABLE TOOLS

Rotary

21. ELEVATIONS (Show whether DF, RT, GR, etc.)

3123 GL

22. APPROX. DATE WORK WILL START\*

August 15, 1987

PROPOSED CASING AND CEMENTING PROGRAM

SIZE OF HOLE	SIZE OF CASING	WEIGHT PER FOOT	SETTING DEPTH	QUANTITY OF CEMENT
12 1/4	8 5/8	24	400	250 sx 100% excess <b>CIRCULATE</b>
7 7/8	5 1/2	15.50	3900	<u>circulate to surface</u>

Queen zone will be selectively perforated and stimulated as needed for optimum production.

- Attached:
1. Well location and acreage dedication plat.
  2. Supplemental drilling data.
  3. Surface use plan.

SIGNED

*Leah Atchley*

Agent

July 30, 1987

(This space for Federal or State office use)

PERMIT NO.

APPROVAL DATE

APPROVED BY

(Signature of Approving Official)

DATE

DATE

*8-6-87*

\*See Instructions On Reverse Side

RECEIVED  
AUG 7 1987  
INSPECTION OFFICE

N MEXICO OIL CONSERVATION COMMISS  
WELL LOCATION AND ACREAGE DEDICATION PLAT

Form C-102  
Supersedes C-128  
Effective 1-1-65

All distances must be from the outer boundaries of the Section.

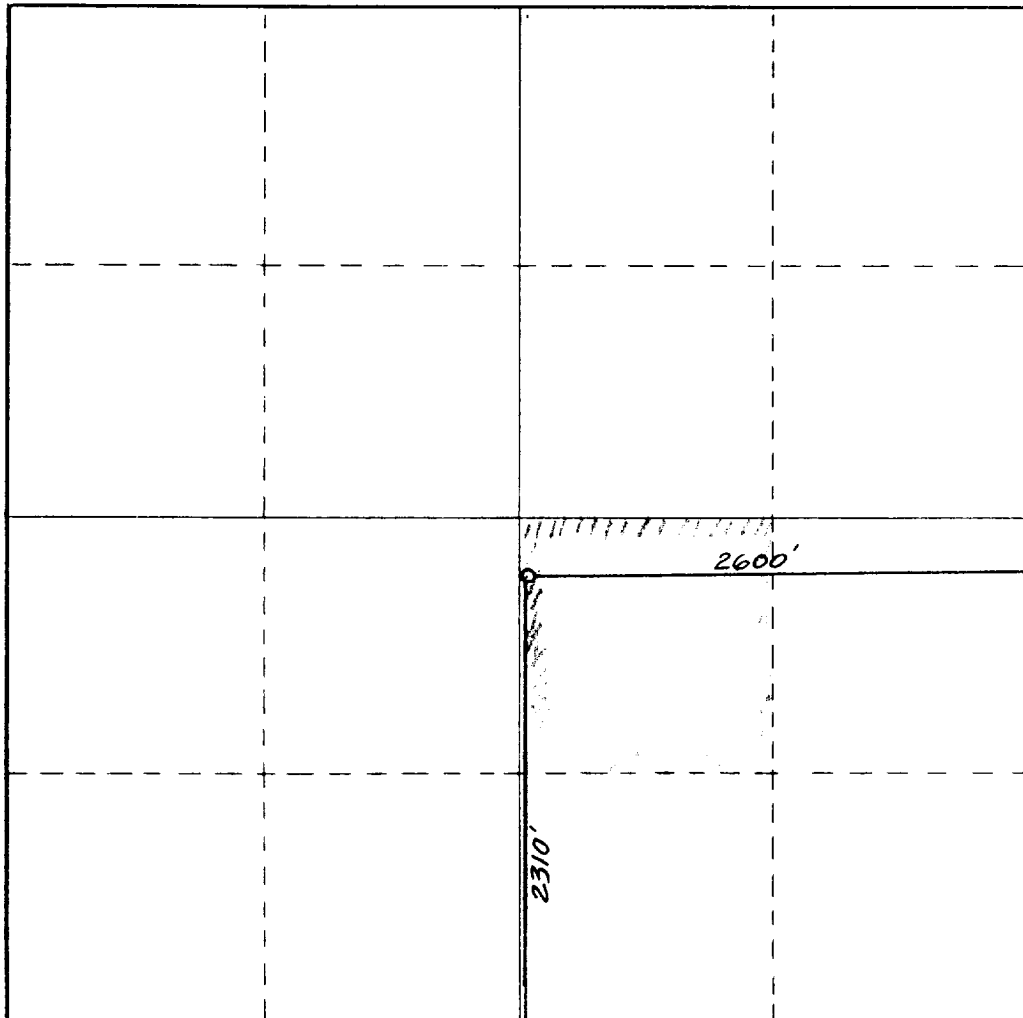
Operator <b>SIRGO-COLLIER INC.</b>			Lease <i>West Dollarhide Queen Land</i> <b>WDQS-30</b>		Well No. <b>79</b>
Unit Letter <b>J</b>	Section <b>30</b>	Township <b>24 South</b>	Range <b>38 East</b>	County <b>Lea</b>	
Actual Footage Location of Well: <b>2310</b> feet from the <b>South</b> line and <b>2600</b> feet from the <b>East</b> line					
Ground Level Elev. <b>3123.</b>	Producing Formation <b>Queen</b>		Pool <b>Dollarhide Queen</b>		Dedicated Acreage: <b>40</b> Acres

1. Outline the acreage dedicated to the subject well by colored pencil or hachure marks on the plat below.
2. If more than one lease is dedicated to the well, outline each and identify the ownership thereof (both as to working interest and royalty).
3. If more than one lease of different ownership is dedicated to the well, have the interests of all owners been consolidated by communitization, unitization, force-pooling, etc?

☒ Yes    ☐ No    If answer is "yes," type of consolidation R-2356 Unitization

If answer is "no," list the owners and tract descriptions which have actually been consolidated. (Use reverse side of this form if necessary.) \_\_\_\_\_

No allowable will be assigned to the well until all interests have been consolidated (by communitization, unitization, forced-pooling, or otherwise) or until a non-standard unit, eliminating such interests, has been approved by the Commission.



**CERTIFICATION**

I hereby certify that the information contained herein is true and complete to the best of my knowledge and belief.

*Original & Signed*  
Name \_\_\_\_\_

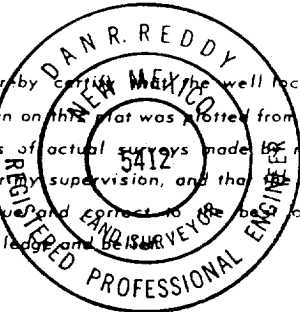
**Leah Atchley**

Position  
**Agent**

Company  
**Sirgo-Collier, Inc.**

Date  
**July 30, 1987**

I hereby certify the well location shown on this plat was plotted from field notes of actual surveys made by me or under my supervision, and that the same is true and correct to the best of my knowledge and belief.



Date Surveyed:  
**July 13, 1987**

Registered Professional Engineer  
and/or Land Surveyor

*Dan R. Reddy*  
Certificate No. \_\_\_\_\_

NM PE&LS NO. 5412

0 330 660 990 1320 1650 1980 2310 2640 2970 3300 3630

RECEIVED  
AUG 7 1987  
OCD  
HOBBS OFFICE

Supplemental Drilling Data  
Sirgo-Collier, Inc.  
WDQSU 30

Lea County, New Mexico

1. Surface Formation: Tertiary Pliocene, GL
2. Estimated Tops of Geologic Markers:

Rustler	1140'	T/Yates
Top/Salt	1300'	T/Queen
Base/Salt	2580'	B/Queen
		TD
3. Anticipated Porosity Zones: Queen 3677'. Oil
4. Casing Design:

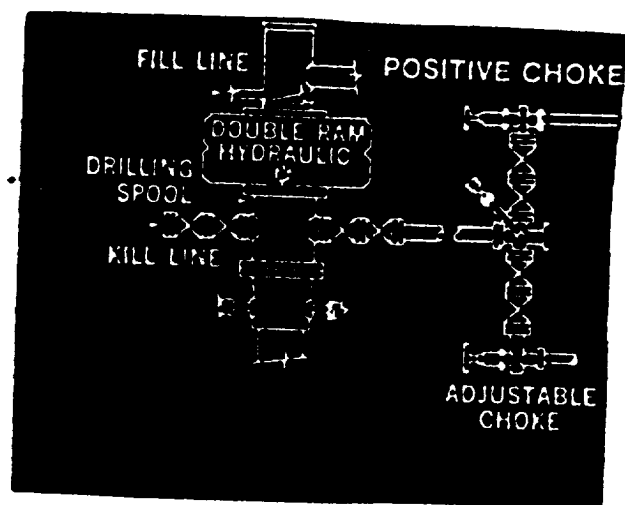
<u>Size</u>	<u>Interval</u>	<u>Weight</u>	<u>Grade</u>	<u>Joint</u>
8-5/8"	0 - 400'	24.00#	J-55	STC
5-1/2"	0 - <b>3900'</b>	15.50#	J-55	STC
5. Surface Control Equipment: Double RAM-type, Series 900 + BOP with annular (See Exhibit).
6. Circulating Medium: Native, cut brine conditioned as necessary for control of viscosity and water loss.
7. Auxiliary Equipment: None
8. Testing, Logging and Coring Programs: Electric Logs - Dual Laterlog/MICRO Laterlog/Gamma Ray/Caliper Compensated Density Log. Possible core from 3750' - 3850'.
9. Abnormal Pressure, Temperature of Gases: None anticipated.
10. Anticipated Starting Date: Operations will commence upon approval approximately May 5, 1987. Duration of drilling, completion and testing, about 5 weeks.

RECEIVED  
AUG 7 1987  
OCD  
HOEBS OFFICE

BOP Description

PETERSON DRILLING COMPANY

Rig #2



RECEIVED  
AUG 7 1987  
OCD  
HOBBS OFFICE

28-61-6 8004

173