

UNITED STATES  
DEPARTMENT OF THE INTERIOR  
BUREAU OF LAND MANAGEMENT

APPLICATION FOR PERMIT TO DRILL, DEEPEN, OR PLUG BACK

1a. TYPE OF WORK

DRILL ☒

DEEPEN ☐

PLUG BACK ☐

b. TYPE OF WELL

OIL WELL ☒

GAS WELL ☐

OTHER

SINGLE ZONE ☐

MULTIPLE ZONE ☐

2. NAME OF OPERATOR

SIRGO-COLLIER, INC.

3. ADDRESS OF OPERATOR

P. O. Box 3531, Midland, Texas 79702

4. LOCATION OF WELL (Report location clearly and in accordance with any State requirements.)

At surface

1650' ENL, 1600' FEL Section 30, T24S, R38E,

At proposed prod. zone

Queen

14. DISTANCE IN MILES AND DIRECTION FROM NEAREST TOWN OR POST OFFICE\*

7 miles Northeast of Jal, New Mexico.

15. DISTANCE FROM PROPOSED\*

LOCATION TO NEAREST PROPERTY OR LEASE LINE, FT. (Also to nearest drlg. unit line, if any)

18. DISTANCE FROM PROPOSED LOCATION\* TO NEAREST WELL, DRILLING, COMPLETED, OR APPLIED FOR, ON THIS LEASE, FT.

21. ELEVATIONS (Show whether DF, RT, GR, etc.)

3165 GL

16. NO. OF ACRES IN LEASE

320

19. PROPOSED DEPTH

3900

17. NO. OF ACRES ASSIGNED TO THIS WELL

40

20. ROTARY OR CABLE TOOLS

Rotary

22. APPROX. DATE WORK WILL START\*

August 22, 1987

PROPOSED CASING AND CEMENTING PROGRAM

SIZE OF HOLE	SIZE OF CASING	WEIGHT PER FOOT	SETTING DEPTH	QUANTITY OF CEMENT
12 1/4	8 5/8	24	400	200 sx 100% excess <b>CIRCULATE</b>
7 7/8	5 1/2	15.50	3900	circulate to surface

Queen zone will be selectively perforated and stimulated as needed for optimum production

- Attached:
1. Well location and acreage dedication plat.
  2. Supplemental drilling data.
  3. Surface use plan.

RECEIVED  
AUG 5 10 07 AM '87  
CARROLL COUNTY  
AREA HEADQUARTERS

IN ABOVE SPACE DESCRIBE PROPOSED PROGRAM: If proposal is to deepen or plug back, give data on present productive zone and proposed new productive zone. If proposal is to drill or deepen directionally, give pertinent data on subsurface locations and measured and true vertical depths. Give flowout prevention program, if any.

SIGNED Leah Atchley TITLE Agent DATE July 31, 1987

(This space for Federal or State office use)

PERMIT NO. APPROVAL DATE

APPROVED BY TITLE DATE 8-11-87

\*See Instructions On Reverse Side

RECEIVED

AUG 12 1987

OCD  
HOBBS OFFICE

**NEW MEXICO OIL CONSERVATION COMMISSION  
WELL LOCATION AND ACREAGE DEDICATION PLAT**

Form C-102  
Supersedes C-128  
Effective 1-1-65

All distances must be from the outer boundaries of the Section.

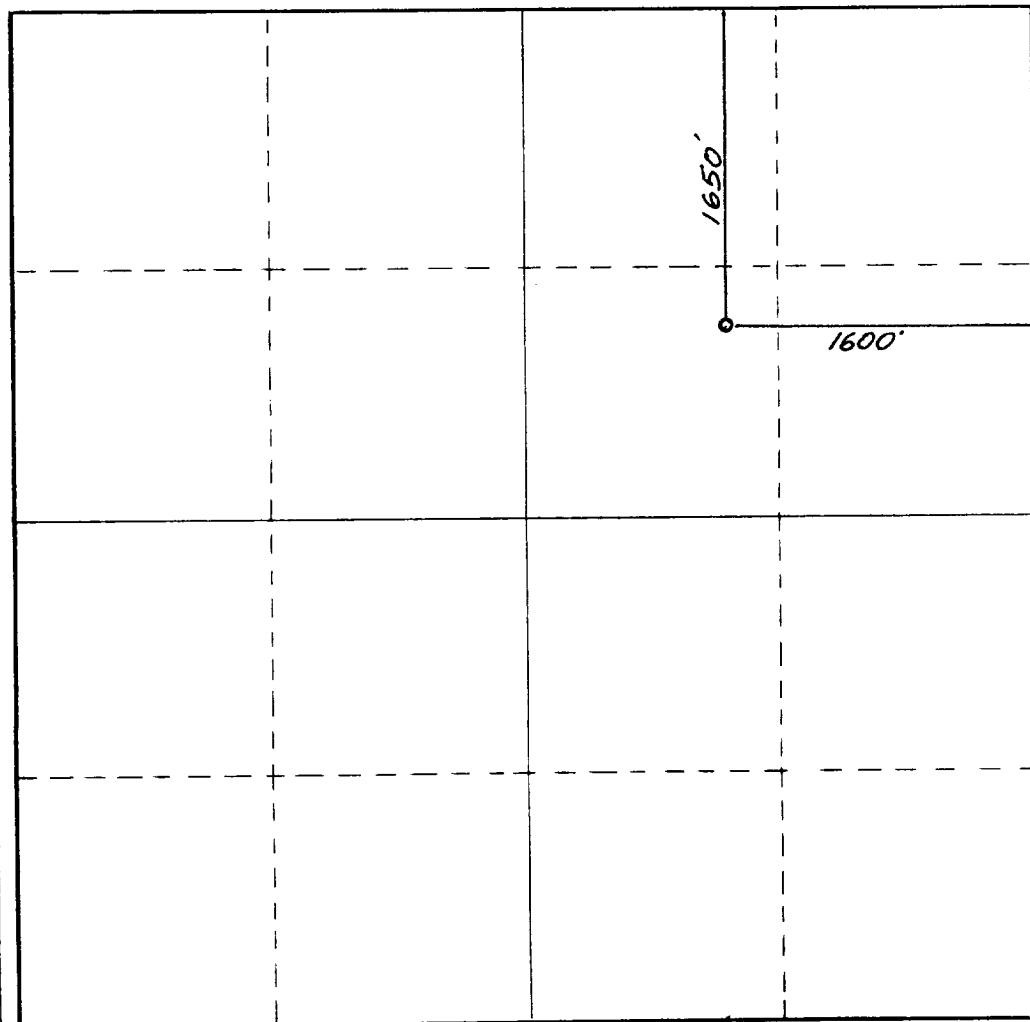
Operator <b>SIRGO-COLLIER INC.</b>			Lease <i>West Dollarhide Well</i> <del>WDSU 30</del> <i>Land Unit</i>		Well No. <b>80</b>
Unit Letter <b>G</b>	Section <b>30</b>	Township <b>24 South</b>	Range <b>38 East</b>	County <b>Lea</b>	
Actual Footage Location of Well: <div style="display: flex; justify-content: space-between;"> <span>1650 feet from the North line and</span> <span>1600 feet from the East line</span> </div>					
Ground Level Elev. <b>3165.</b>	Producing Formation <b>Queen</b>	Pool <b>Dollarhide Queen</b>		Dedicated Acreage: <b>40</b> Acres	

- Outline the acreage dedicated to the subject well by colored pencil or hachure marks on the plat below.
- If more than one lease is dedicated to the well, outline each and identify the ownership thereof (both as to working interest and royalty).
- If more than one lease of different ownership is dedicated to the well, have the interests of all owners been consolidated by communitization, unitization, force-pooling, etc?

☒ Yes    ☐ No    If answer is "yes," type of consolidation R2356 Unitization

If answer is "no," list the owners and tract descriptions which have actually been consolidated. (Use reverse side of this form if necessary.) \_\_\_\_\_

No allowable will be assigned to the well until all interests have been consolidated (by communitization, unitization, forced-pooling, or otherwise) or until a non-standard unit, eliminating such interests, has been approved by the Commission.



**CERTIFICATION**

I hereby certify that the information contained herein is true and complete to the best of my knowledge and belief.

*Leah Atchley*

Name

**Leah Atchley**

Position

**Agent**

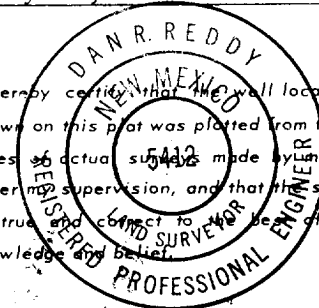
Company

**Sirgo-Collier, Inc.**

Date

**July 30, 1987**

I hereby certify that the well location shown on this plat was plotted from field notes of actual surveys made by me or under my supervision, and that the same is true and correct to the best of my knowledge and belief.



Date Surveyed

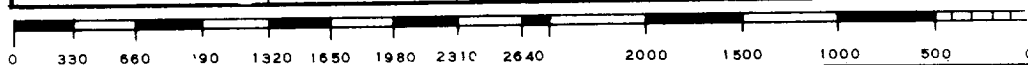
**July 13, 1987**

Registered Professional Engineer and/or Land Surveyor

*Dan R. Reddy*

Certificate No.

**NM PE&LS NO. 5412**



**RECEIVED**

**AUG 12 1987**

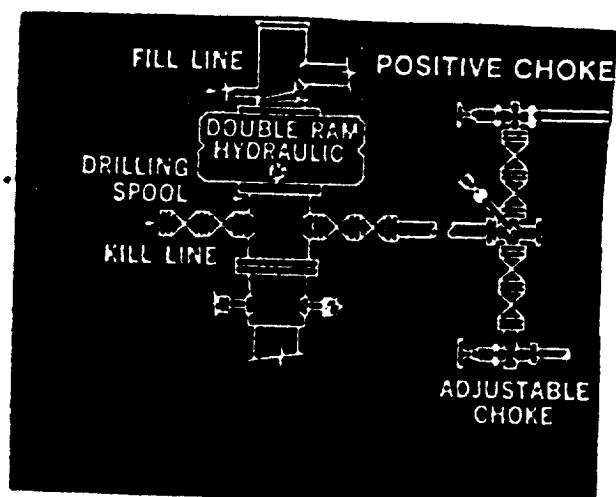
**OCD**

**HOBBS OFFICE**

BOP Description

PETERSON DRILLING COMPANY

Rig #2



RECEIVED  
AUG 12 1987  
OCD  
HOBBS OFFICE

10-8-87  
E13