

NEW MEXICO OIL CONSERVATION COMMISS.  
WELL LOCATION AND ACREAGE DEDICATION PLAT

Form C-102  
Supersedes C-128  
Effective 1-1-85

All distances must be from the outer boundaries of the Section.

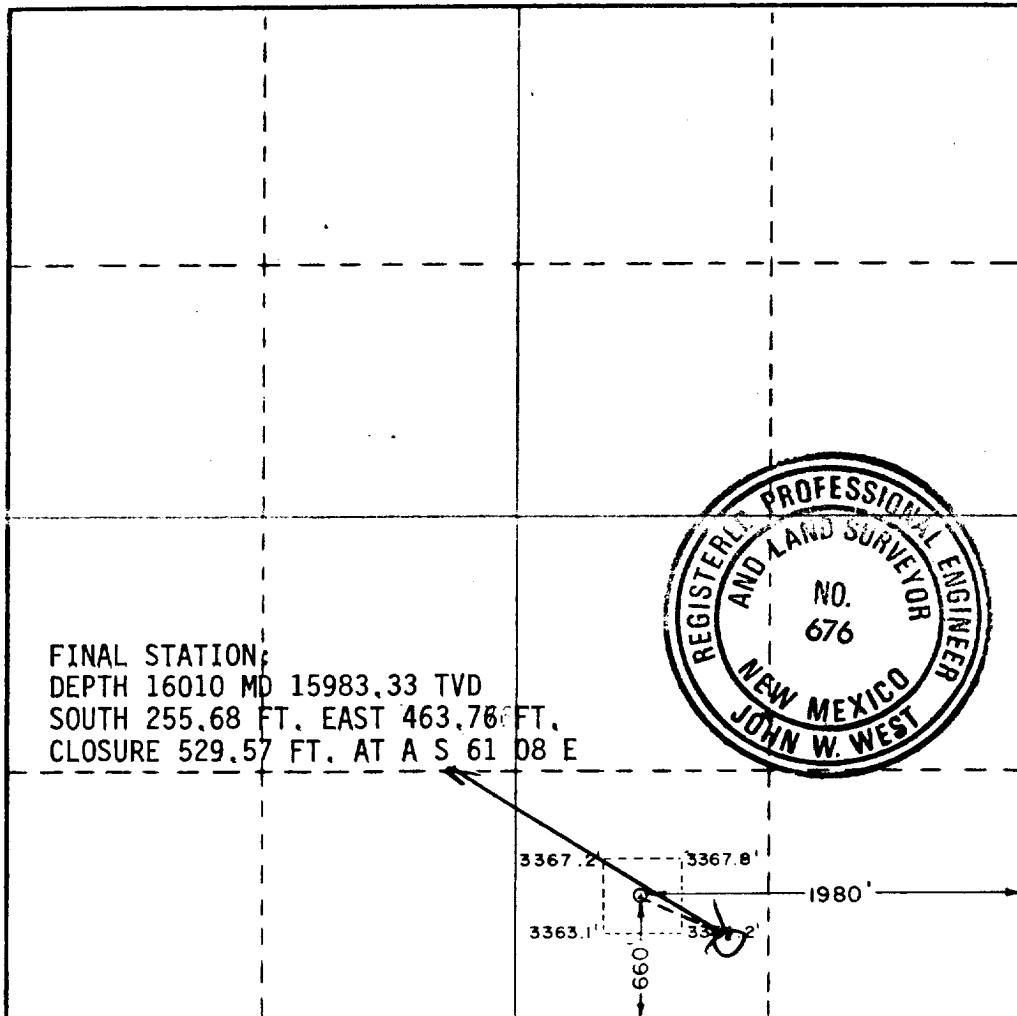
Operator ENRON OIL & GAS CO.			Lease BRININSTOOL 21 FEDERAL		Well No. 1
Unit Letter 0	Section 21	Township 25 SOUTH	Range 33 EAST	County LEA	
Actual Footage Location of Well: 660 feet from the SOUTH line and 1980 feet from the EAST line					
Ground Level Elev.	Producing Formation Mudstone	Pool Wildcat	Dedicated Acreage: 320 Acres		

1. Outline the acreage dedicated to the subject well by colored pencil or hatchure marks on the plat below.
2. If more than one lease is dedicated to the well, outline each and identify the ownership thereof (both as to working interest and royalty).
3. If more than one lease of different ownership is dedicated to the well, have the interests of all owners been consolidated by communitization, unitization, force-pooling, etc?

☐ Yes ☐ No If answer is "yes," type of consolidation \_\_\_\_\_

If answer "no," list the owners and tract descriptions which have actually been consolidated (use reverse side of this form if necessary.) \_\_\_\_\_

No allowable will be assigned to the well until all interests have been consolidated (by communitization, unitization, forced-pooling, or otherwise) or until a non-standard unit, eliminating such interests, has been approved by the Commission.



CERTIFICATION

I hereby certify that the information contained herein is true and complete to the best of my knowledge and belief.

*Betty Gildon*  
Name

Betty Gildon  
Position  
Regulatory Analyst

Company  
Enron Oil & Gas Company

Date  
1/4/88

I hereby certify that the well location shown on this plat was plotted from field notes of actual surveys made by me or under my supervision, and that the same is true and correct to the best of my knowledge and belief.

Date Surveyed  
AUGUST 19, 1987

Registered Professional Engineer and/or Land Surveyor

*John W. West*  
Certificate No. JOHN W. WEST, 676

RONALD J. EIDSON, 3239

**RECEIVED**

**JAN 25 1988**  
**QCD**  
**HOBBS OFFICE**