

STATE OF NEW MEXICO
ENERGY AND MINERALS DEPARTMENT

OIL CONSERVATION DIVISION

P. O. BOX 2088
SANTA FE, NEW MEXICO 87501

Form C-101
Revised 10-1-78

NO. OF COPIES RECEIVED	
DISTRIBUTION	
SANTA FE	
FILE	
U.S.G.S.	
LAND OFFICE	
OPERATOR	

5A. Indicate Type of Lease
STATE ☐ FEE ☒

5. State Oil & Gas Lease No.

APPLICATION FOR PERMIT TO DRILL, DEEPEN, OR PLUG BACK

1a. Type of Work

b. Type of Well DRILL ☒ DEEPEN ☐ PLUG BACK ☐
OIL WELL ☒ GAS WELL ☐ OTHER ☐ SINGLE ZONE ☒ MULTIPLE ZONE ☐

2. Name of Operator

Sirgo-Collier, Inc.

3. Address of Operator

P. O. Box 3531, Midland, Texas 79702

4. Location of Well

UNIT LETTER I LOCATED 2610 FEET FROM THE South LINE
AND 115 FEET FROM THE East LINE OF SEC. 31 TWP. 24-S RGE. 38-E NMPM

7. Unit Agreement Name
West Dollarhide Queen Sand Unit

8. Farm or Lease Name

9. Well No.

~~98~~ 98

10. Field and Pool, or Wildcat
Dollarhide Queen

12. County
Lea

11. Elevations (Show whether DF, KT, etc.) GL 3137' KB 3148.5'	21A. Kind & Status Plug. Bond Cash Statewide	19. Proposed Depth 3900'	19A. Formation Queen	20. Rotary or C.T. Rotary	22. Approx. Date Work will start December 7, 1987
---	---	-----------------------------	-------------------------	------------------------------	--

23.

PROPOSED CASING AND CEMENT PROGRAM

SIZE OF HOLE	SIZE OF CASING	WEIGHT PER FOOT	SETTING DEPTH	SACKS OF CEMENT	EST. TOP
12-1/4"	8-5/8"	24#	420'	250 sx	Surface
7-7/8"	5-1/2"	15.5 & 17#	3900'	1000 sx	Surface

Queen zones will be selectively perforated and stimulated as needed for optimum production.

ABOVE SPACE DESCRIBE PROPOSED PROGRAM; IF PROPOSAL IS TO DEEPEN OR PLUG BACK, GIVE DATA ON PRESENT PRODUCTIVE ZONE AND PROPOSED NEW PRODUCTIVE ZONE. GIVE BLOWOUT PREVENTER PROGRAM, IF ANY.

I hereby certify that the information above is true and complete to the best of my knowledge and belief.

Signed Amy L. Whitley Title Agent Date 11-12-87
(This space for State Use)

ORIGINAL SIGNED BY JERRY SEXTON

APPROVED BY DISTRICT 1 SUPERVISOR TITLE DATE

CONDITIONS OF APPROVAL, IF ANY:

Approved for drilling only --
NSL must be approved before well
can be produced.

Permit Expires 6 Months From Approval
Date Unless Drilling Underway.

NOV 30 1987

NEW MEXICO OIL CONSERVATION COMMISSION
WELL LOCATION AND ACREAGE DEDICATION PLAT

Form C-102
Supersedes C-128
Effective 1-1-65

All distances must be from the outer boundaries of the Section.

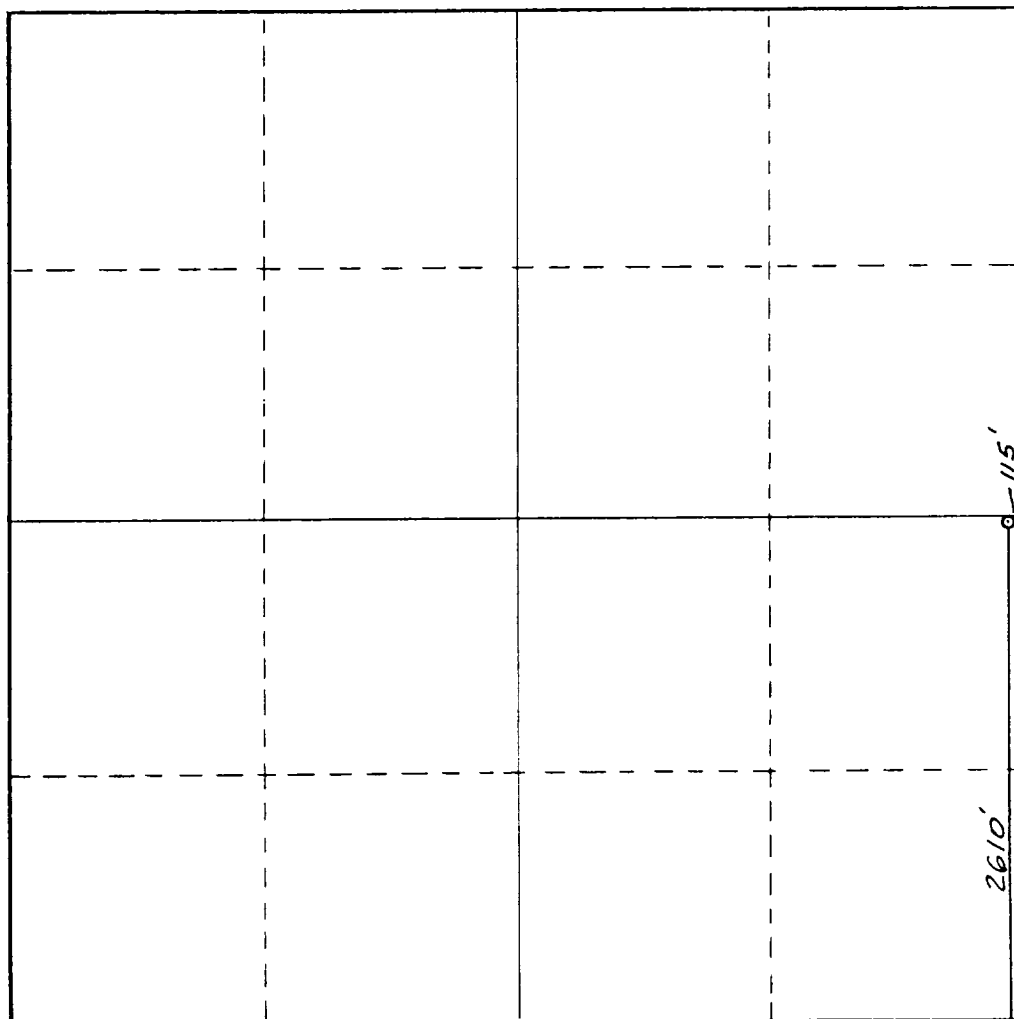
Operator SIRGO-COLLIER, INC.		Lease WDQSU 31-99		Well No. 98 31-99
Unit Letter I	Section 31	Township 24 South	Range 38 East	County Lea County, N.M.
Actual Footage Location of Well: 2610 feet from the South line and 115 feet from the East line				
Ground Level Elev. 3137.	Producing Formation Queen	Pool Dollarhide Queen	Dedicated Acreage 40	

1. Outline the acreage dedicated to the subject well by colored pencil or hachure marks on the plat below.
2. If more than one lease is dedicated to the well, outline each and identify the ownership thereof (both as to working interest and royalty).
3. If more than one lease of different ownership is dedicated to the well, have the interests of all owners been consolidated by communitization, unitization, force-pooling, etc?

☒ Yes ☐ No If answer is "yes," type of consolidation R-2356 Unitization

If answer is "no," list the owners and tract descriptions which have actually been consolidated. (Use reverse side of this form if necessary.) _____

No allowable will be assigned to the well until all interests have been consolidated (by communitization, unitization, forced-pooling, or otherwise) or until a non-standard unit, eliminating such interests, has been approved by the Commission.



CERTIFICATION

I hereby certify that the information contained herein is true and complete to the best of my knowledge and belief.

Amy L. Whitley
Name

Amy L. Whitley

Position

Agent

Company

Sirgo-Collier, Inc.

Date

11-10-87

DAN R. REDDY
NEW MEXICO
REGISTERED PROFESSIONAL ENGINEER
I hereby certify that the well location shown on this plat was plotted from field notes of actual surveys made by me or under my supervision and that the same is true and correct to the best of my knowledge and belief.

Date Surveyed

October 30, 1987

Registered Professional Engineer and/or Land Surveyor

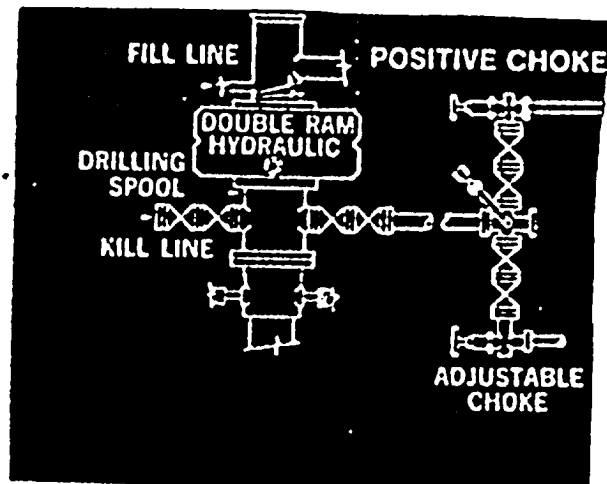
Dan R. Reddy

Certificate No.

NM PE&LS NO, 5412

0 330 660 990 1320 1650 1980 2310 2640 2000 1500 1000 500 0

RECEIVED
NOV 12 1987
OCD
HOBBS OFFICE



RECEIVED
NOV 12 1987
OCD
HOBBS OFFICE

Rec'd Z-A-88

173